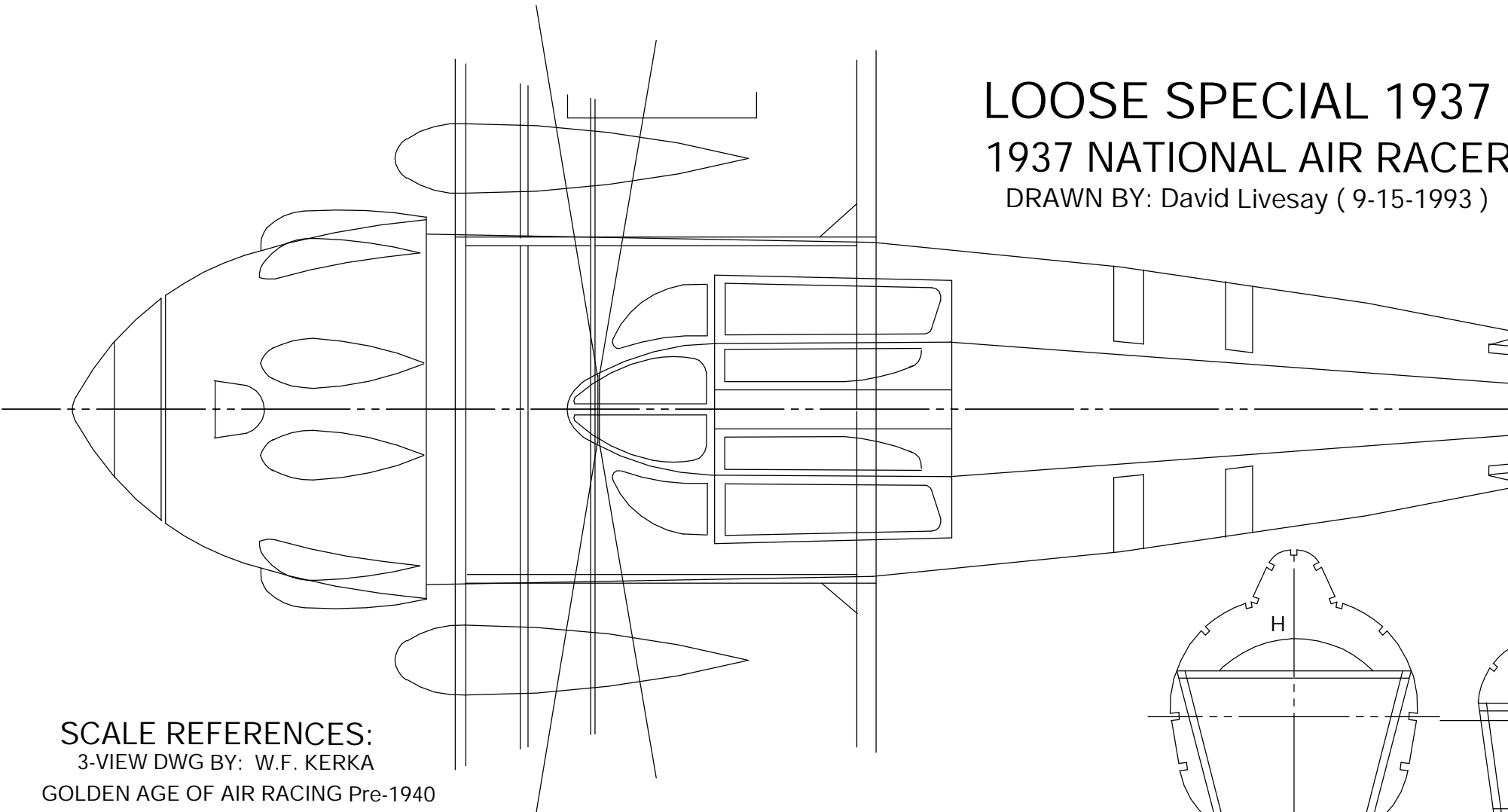


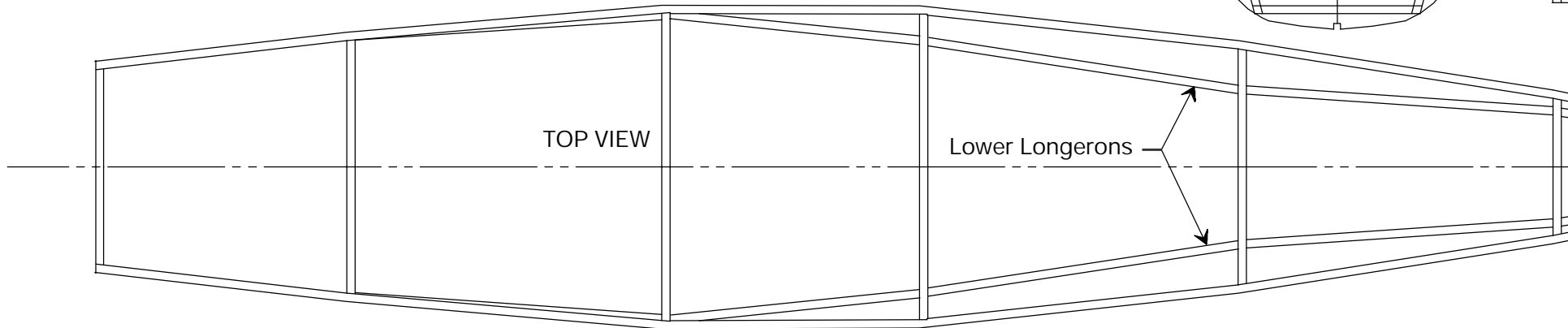
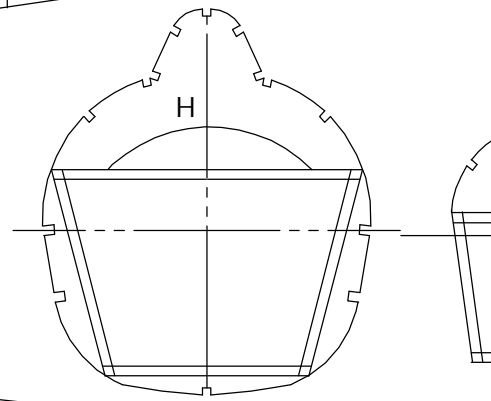
# LOOSE SPECIAL 1937

## 1937 NATIONAL AIR RACER

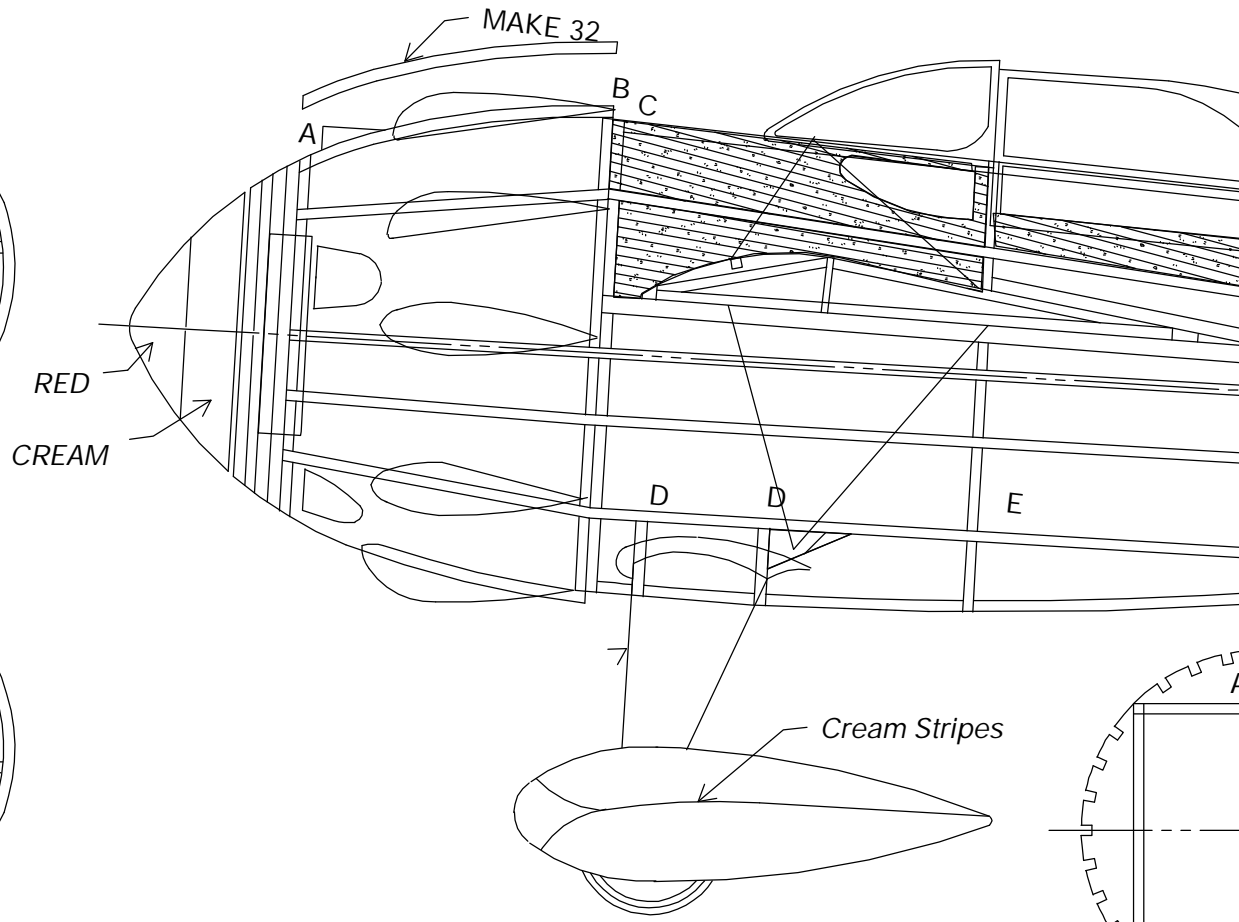
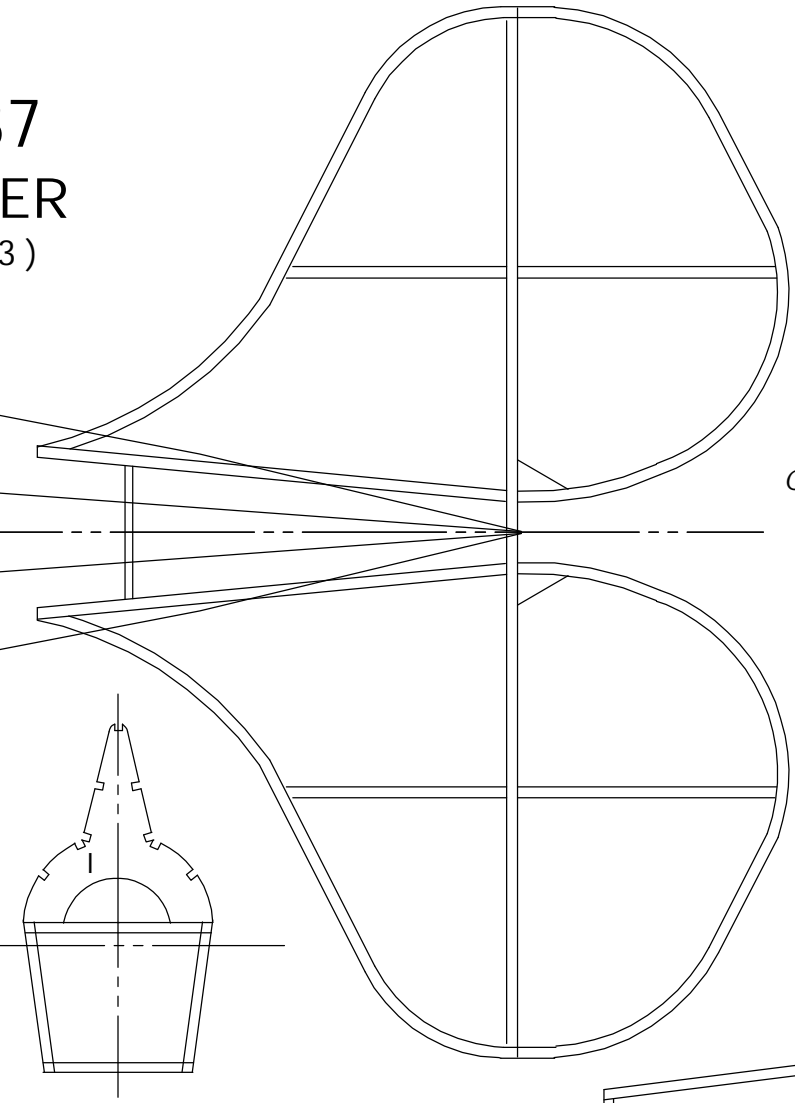
DRAWN BY: David Livesay ( 9-15-1993 )



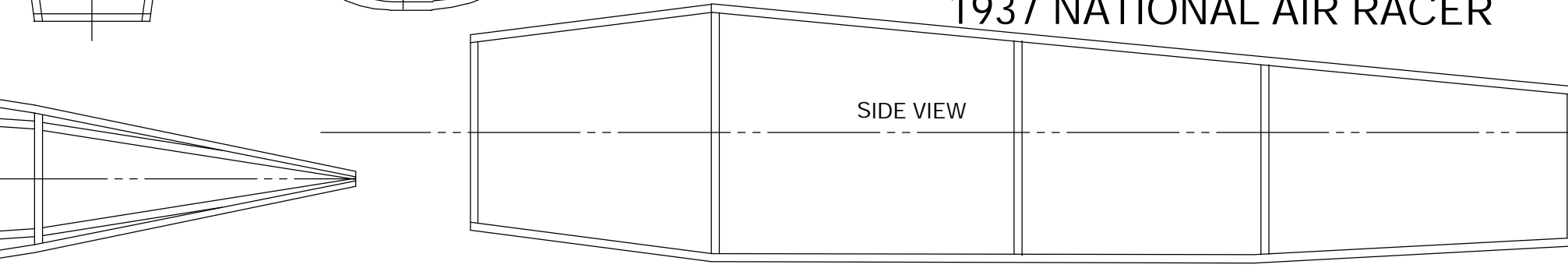
**SCALE REFERENCES:**  
3-VIEW DWG BY: W.F. KERKA  
GOLDEN AGE OF AIR RACING Pre-1940



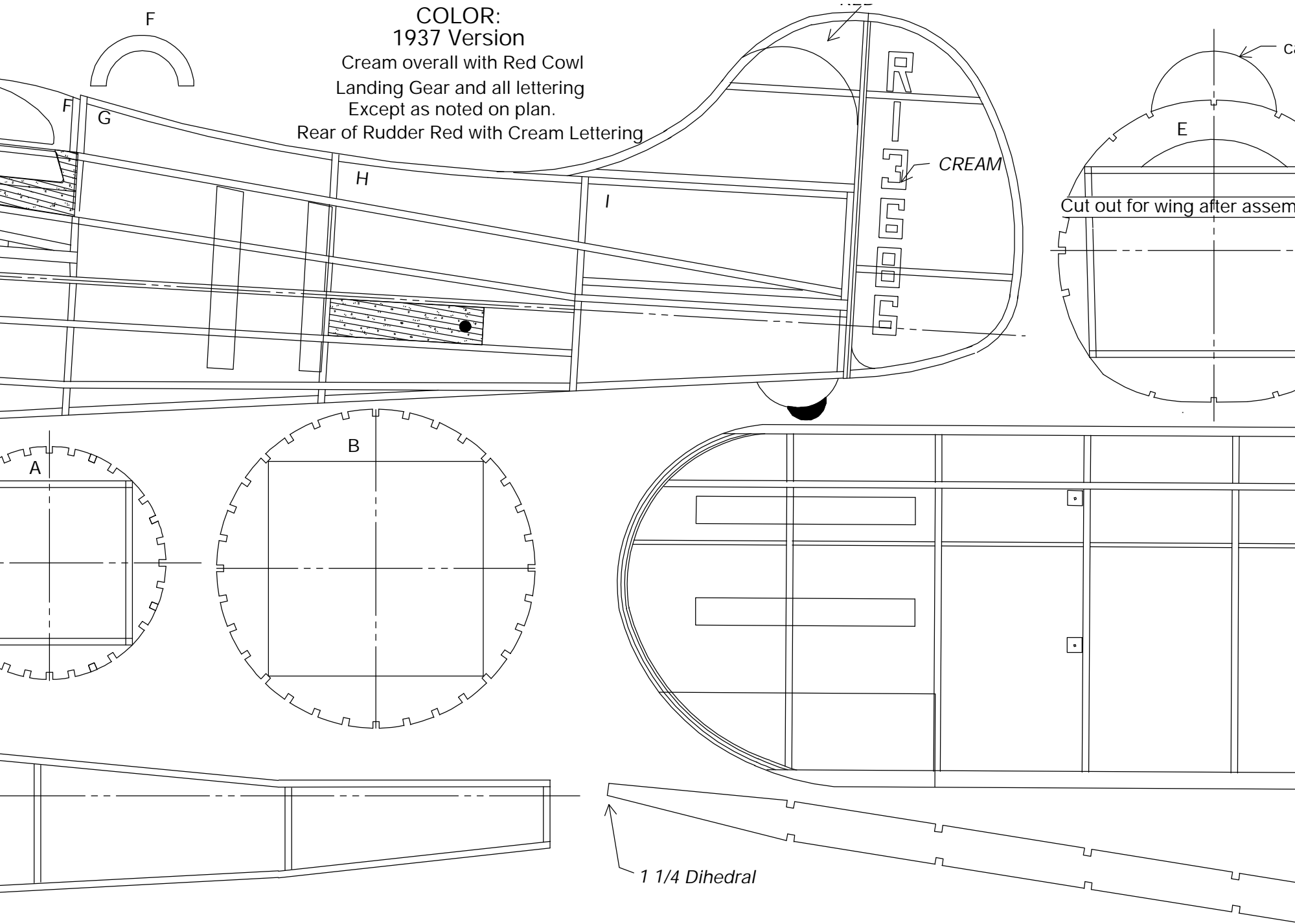
7  
ER  
3)



# LOOSE SPECIAL 1937 1937 NATIONAL AIR RACER

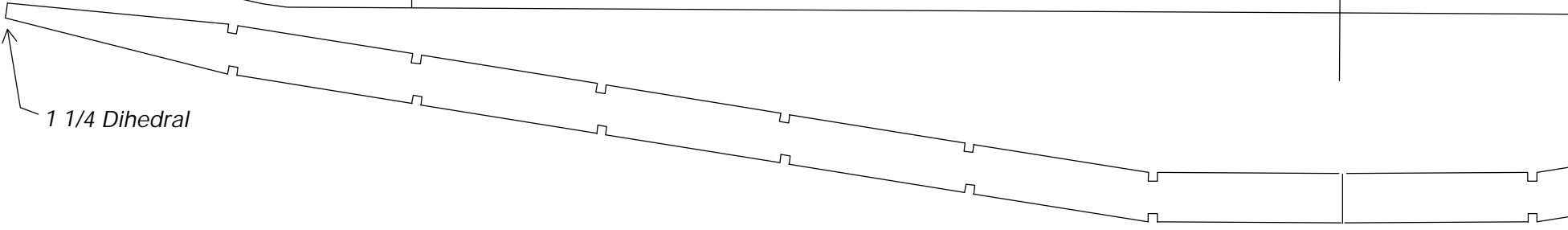
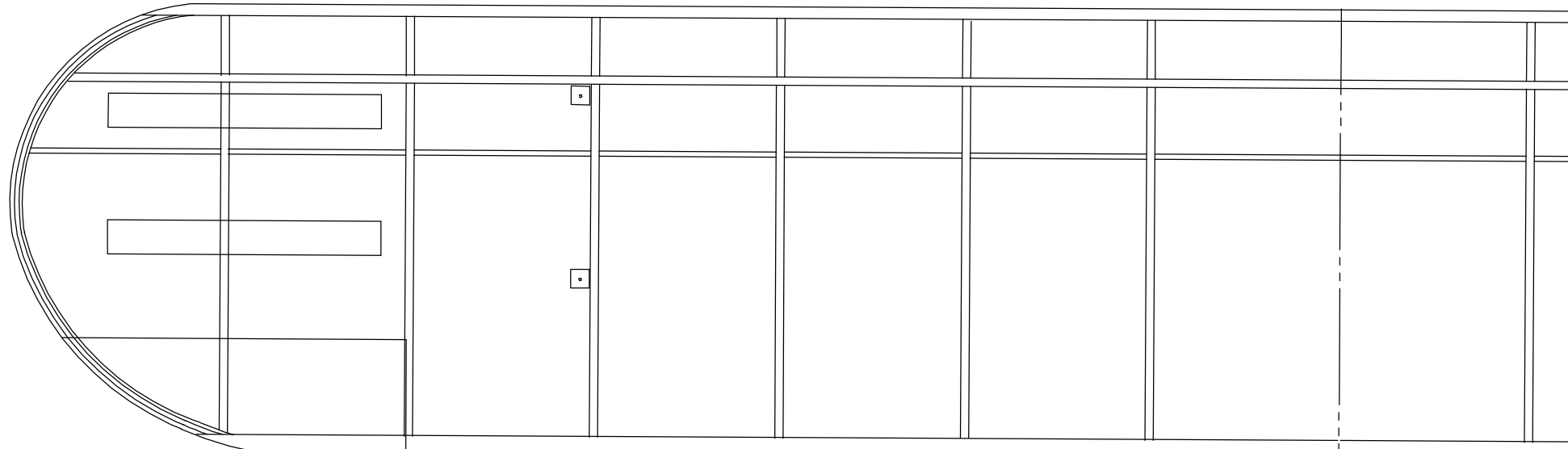
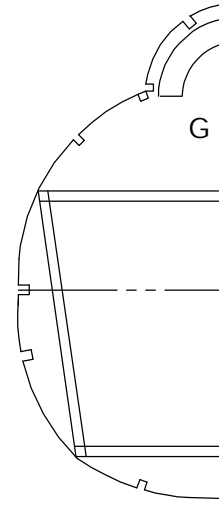
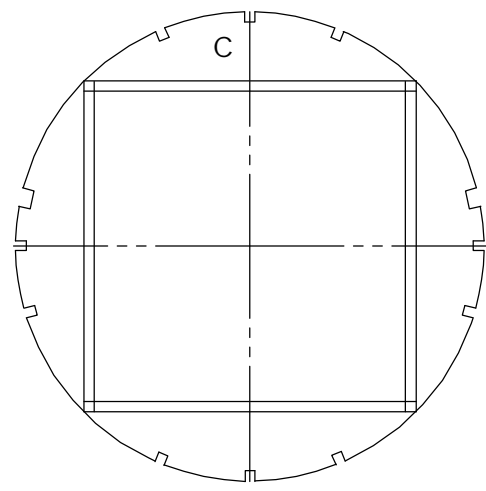
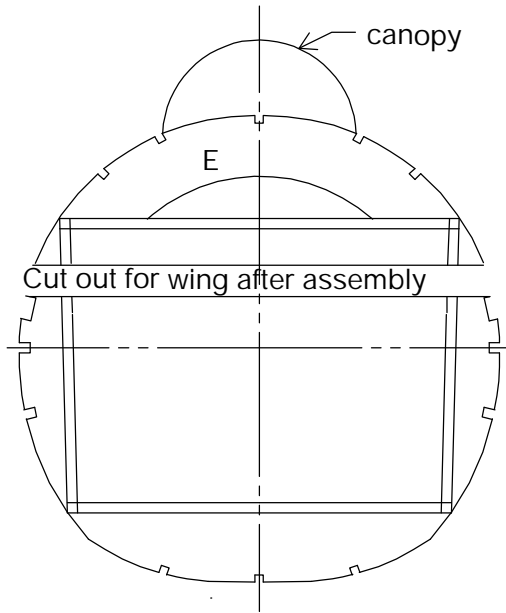
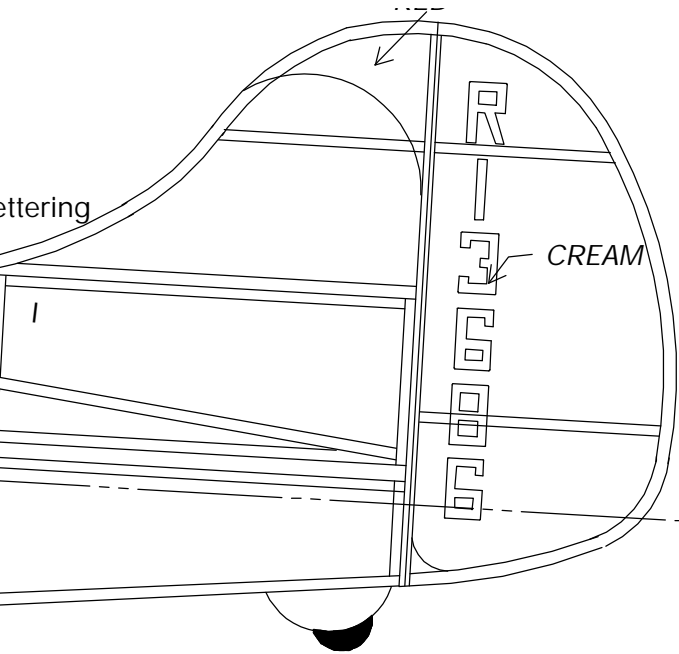


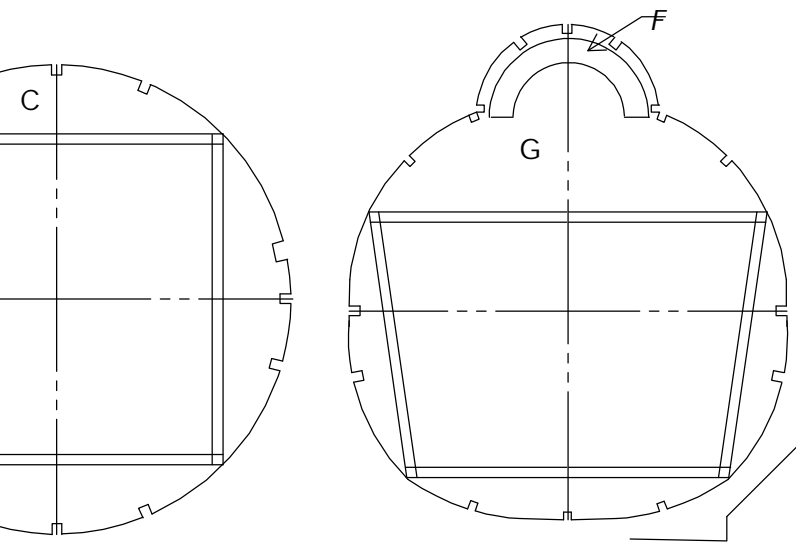
COLOR:  
1937 Version  
Cream overall with Red Cowl  
Landing Gear and all lettering  
Except as noted on plan.  
Rear of Rudder Red with Cream Lettering



Cut out for wing after assem

1 1/4 Dihedral





Model is built using a box with formers instead of formers and keel method. The cowl is formed by 32 pieces of sliced balsa glued between formers A and B. This may not appeal to some people but it builds fast and is really light. It is also covered with 32 pieces of tissue cut to fit from piece to piece. Model may never be a world beater but it is so dog gone cute it had to be built. Build it and be ready to be asked if it was a real airplane and its name.

