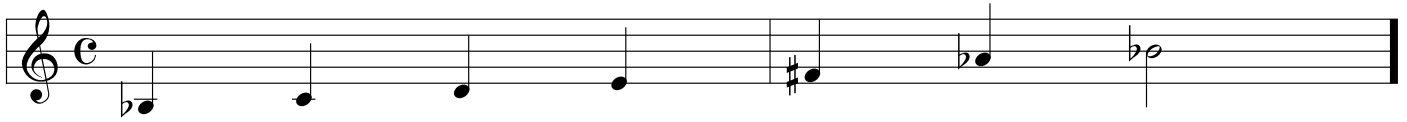


Triad Exercise #8

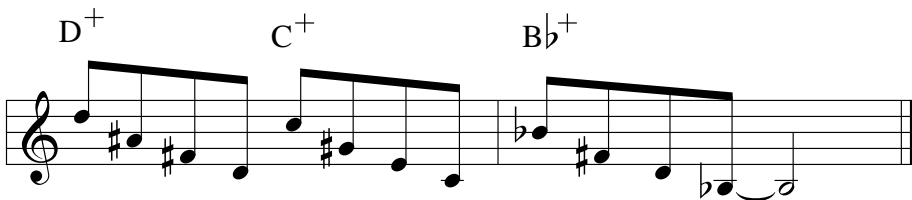
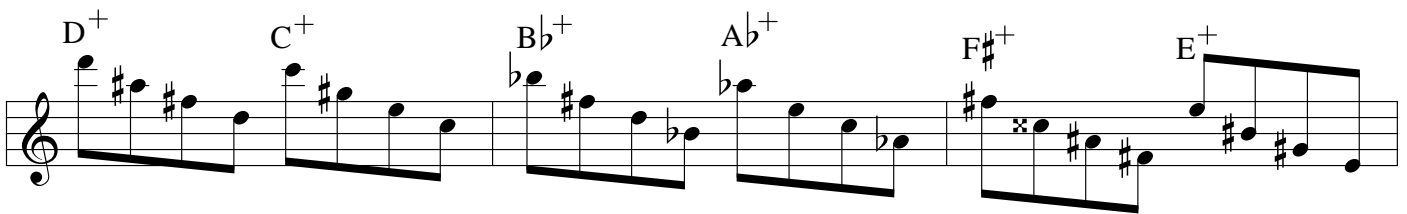
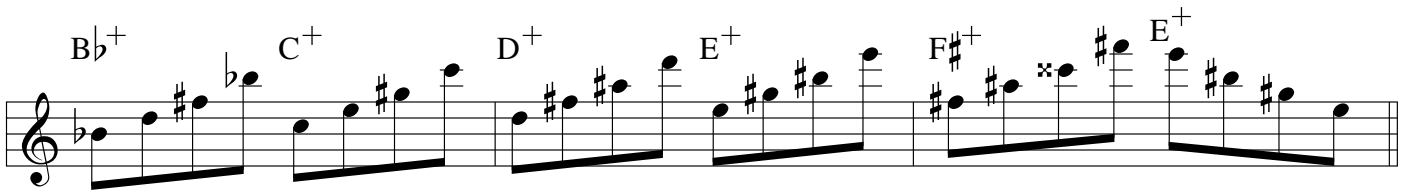
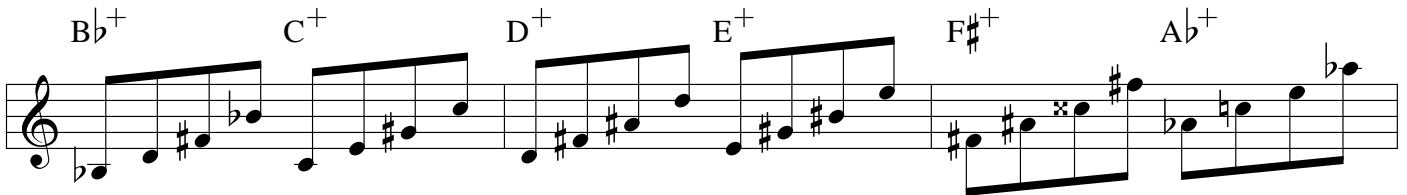
A whole-tone scale is built with just two augmented triads (ex. B \flat , D, F \sharp & C, E, G \sharp). Although, every root of the whole-tone scale contains an augmented triad, these triads are mere enharmonic spellings of the same 2 triads.

B \flat Whole-Tone Scale

by: Farrell Vernon

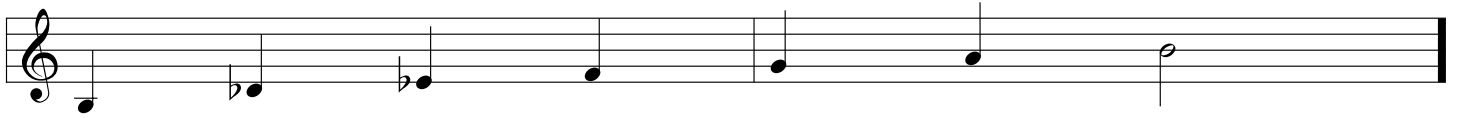


Exercise #8.1a = Whole-Tone Scale in Diatonic Root Movements from the scale



*Because there are only 2 whole-tone scales possible, you only have to learn 2 patterns to cover all 12 keys. These patterns work best on V7+5, V7+11+5 and Maj7+5 chords.

B Whole-Tone Scale



Exercise #8.1b = Whole-Tone Scale in Diatonic Root Movements from the scale

Four staves of music in treble clef, each showing a whole-tone scale with diatonic root movements. The scales are: 1) B⁺, D^{b+}, E^{b+}, F⁺, G⁺, A⁺; 2) B⁺, D^{b+}, E^{b+}, F⁺, E^{b+}, D^{b+}; 3) B⁺, A⁺, G⁺, F⁺, E^{b+}, D^{b+}; 4) B⁺. Each scale is written as a sequence of eighth notes, starting with a quarter rest, and ending with a whole note. The notes are marked with natural, sharp, or flat signs as appropriate for the scale.

Exercise #8.2a = Whole-Tone Scale in
 Diatonic Root Movements from the scale

$B\flat^+$ C^+ D^+ E^+ $F\sharp^+$ $A\flat^+$

$B\flat^+$ C^+ D^+ E^+ $F\sharp^+$ $A\flat^+$

$B\flat^+$ $A\flat^+$ $F\sharp^+$ E^+ D^+ C^+

$B\flat^+$ $A\flat^+$ $F\sharp^+$ E^+ D^+ C^+

$B\flat^+$

Exercise #8.2b = Whole-Tone Scale in
Diatonic Root Movements from the
scale

The image displays four staves of musical notation in treble clef, each representing a different diatonic root movement from a whole-tone scale. The notes are marked with accidentals and some are crossed out with an 'x' to indicate chromatic alterations.

Staff 1: Shows upward root movements from B⁺ to D^{b+}, E^{b+}, F⁺, G⁺, and A⁺. The notes are: B⁺ (natural), C⁺ (natural), D^{b+} (flat), E^{b+} (flat), F⁺ (natural), G⁺ (natural), A⁺ (natural), B⁺ (natural).

Staff 2: Shows upward root movements from B⁺ to D^{b+}, E^{b+}, F⁺, G⁺, and A⁺. The notes are: B⁺ (natural), C⁺ (natural), D^{b+} (flat), E^{b+} (flat), F⁺ (natural), G⁺ (natural), A⁺ (natural), B⁺ (natural).

Staff 3: Shows downward root movements from G⁺ to F⁺, E^{b+}, D^{b+}, B⁺, and A⁺. The notes are: G⁺ (natural), F⁺ (natural), E^{b+} (flat), D^{b+} (flat), B⁺ (natural), A⁺ (natural), G⁺ (natural), F⁺ (natural).

Staff 4: Shows downward root movements from G⁺ to F⁺, E^{b+}, D^{b+}, and B⁺. The notes are: G⁺ (natural), F⁺ (natural), E^{b+} (flat), D^{b+} (flat), B⁺ (natural), A⁺ (natural), G⁺ (natural), F⁺ (natural).