

Data comparison

Dissertation entitled:
**The Development of
Public Land Management Policy
For Under-utilized Space in Bangkok, Thailand**

[Ariya Narm Aruninta]

Cross clusters

Cluster 1 – Chatujak

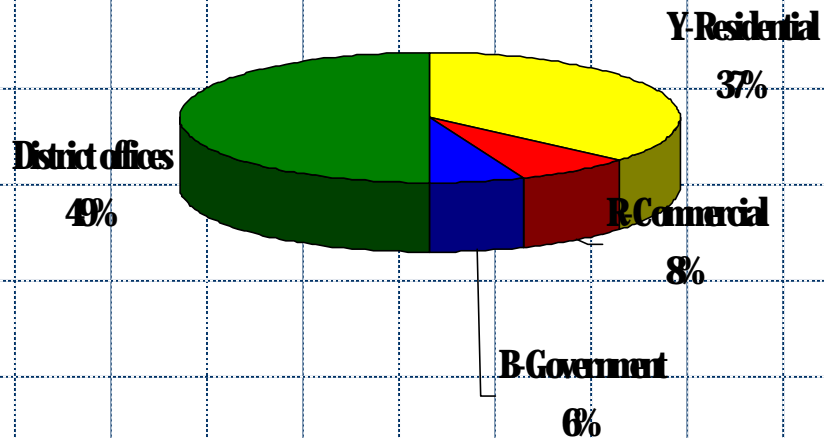
- ◆ **T1**- Treasury Dept : Old bus terminal
- ◆ **S1**- State Railway of Thailand : Railway Engineering School
- ◆ **E1**- Expressway and Rapid Transit Authority : In front of New Bus Terminal

Cluster 2 – Rajchatewee

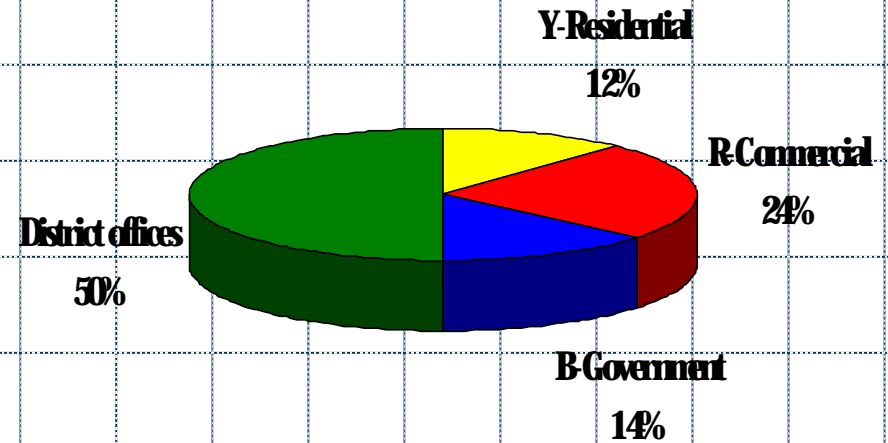
- ◆ **T2**- Treasury Dept : Dept of Livestock Development
- ◆ **S2**- State Railway of Thailand : Railway Factory
- ◆ **E2**- Expressway and Rapid Transit Authority : Urugpong/Ban Krua area

Land-use samples

◆ Chatujak – More on resident



◆ Rajchatewee – More on commercial and governmental offices



Cross actors

Involved organizations

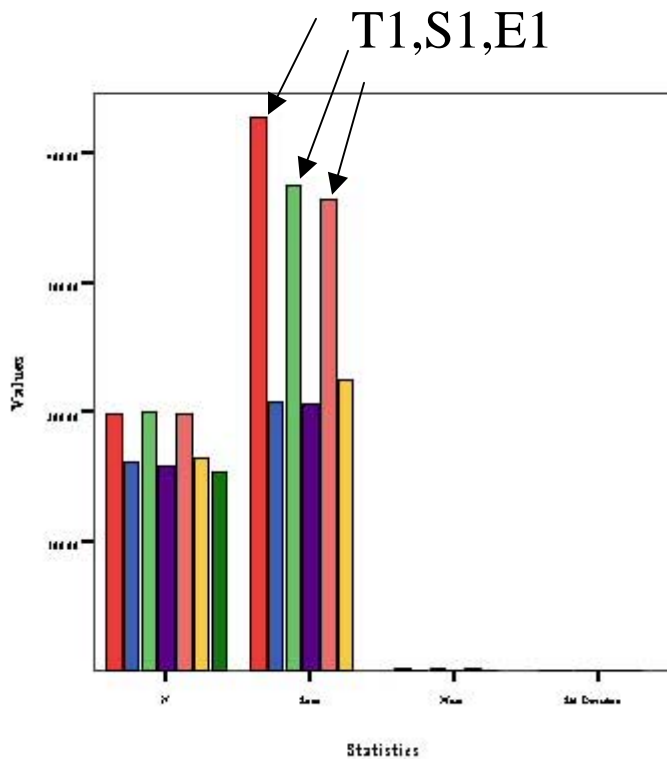
- ◆ Land owners
 - ◆ Treasury Dept (TRD)
 - ◆ State Railways of Thailand (SRT)
 - ◆ Expressway and Transit Authority (ETA)
- ◆ BMA (local government)
- ◆ Private company

Citizens

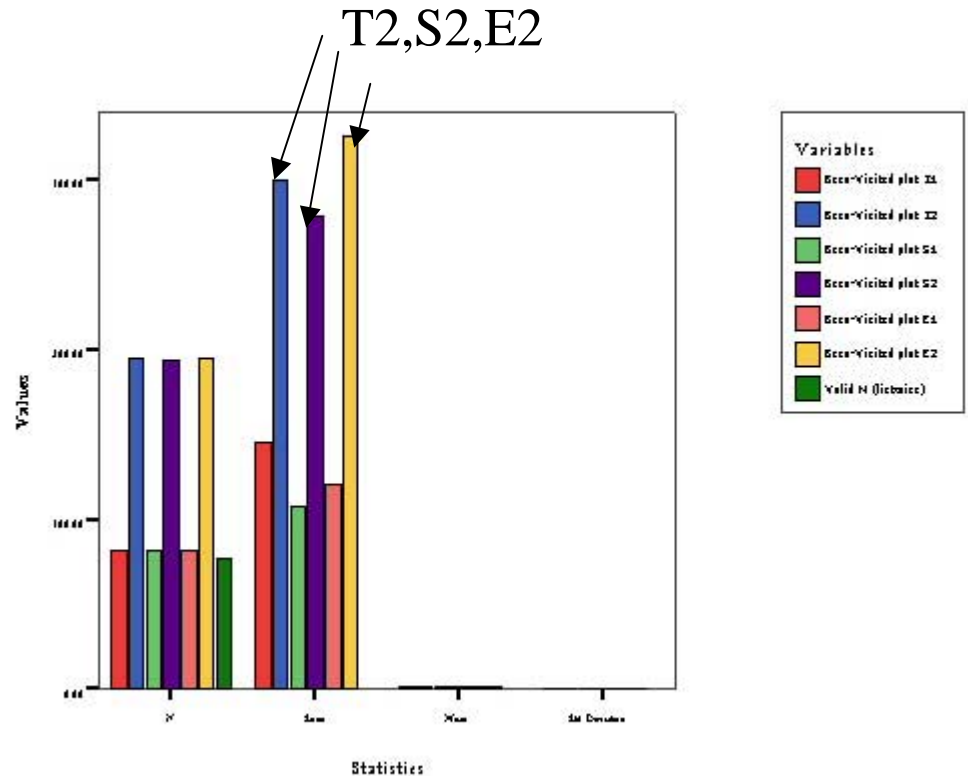
- ◆ Cluster 1 – Chatujak
 - ◆ Residential zone (yellow)
 - ◆ Commercial zone (red)
 - ◆ Gov't office zone (blue)
 - ◆ District office
- ◆ Cluster 2 – Rajchatewee
 - ◆ Residential zone (yellow)
 - ◆ Commercial zone (red)
 - ◆ Gov't office zone (blue)
 - ◆ District office

Cross clusters: Been-visited to site

Descriptive Statistics



Descriptive Statistics



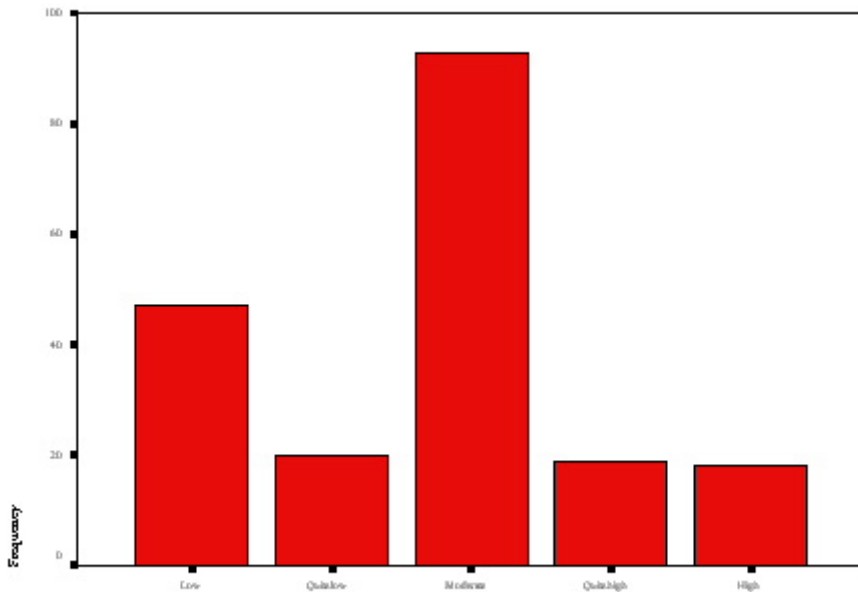
Cluster 1- Chatujak

Cluster 2- Rajchatewee

Cross clusters : T1 existing

Citizens from both clusters feel fine with T1

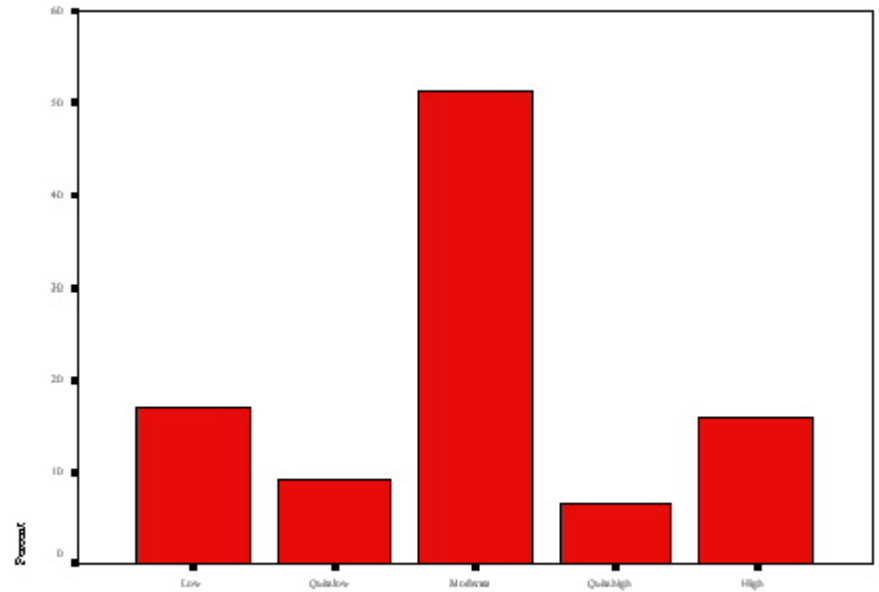
Appropriation of T1 Existing



Appropriation of T1 Existing

Cluster 1- Chatujak

Appropriation of T1 Existing



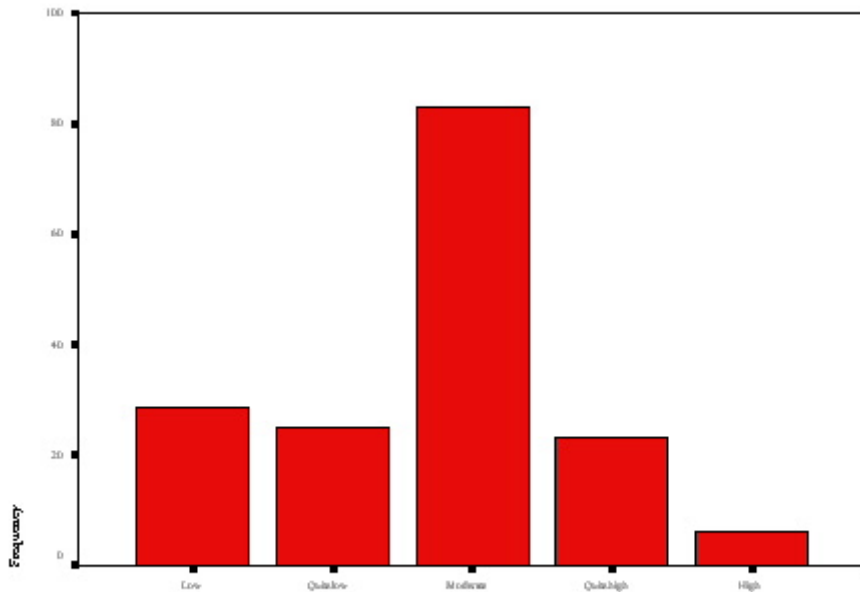
Appropriation of T1 Existing

Cluster 2- Rajchatewee

Cross clusters : T2 existing

Citizens from both clusters feel fine with T2

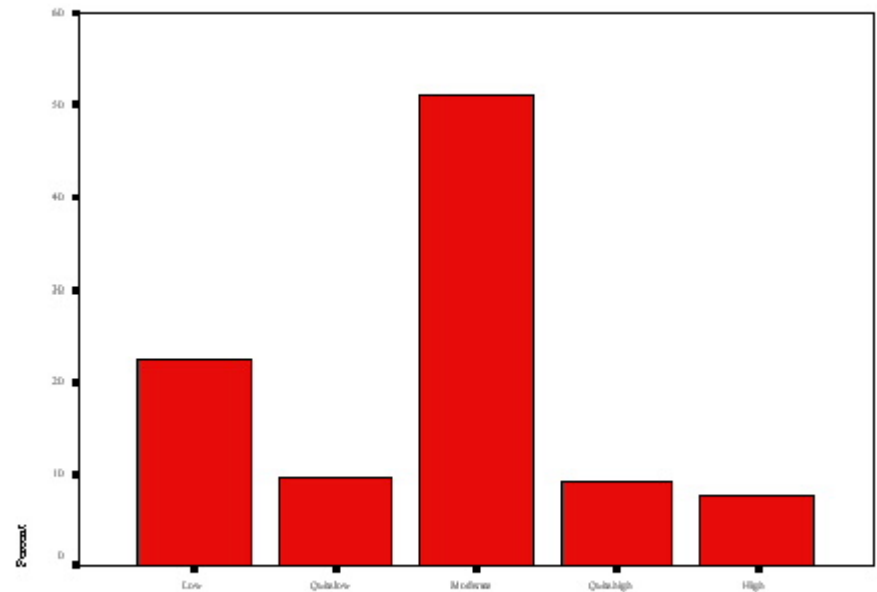
Appropriation of T2 Existing



Appropriation of T2 Existing

Cluster 1- Chatujak

Appropriation of T2 Existing



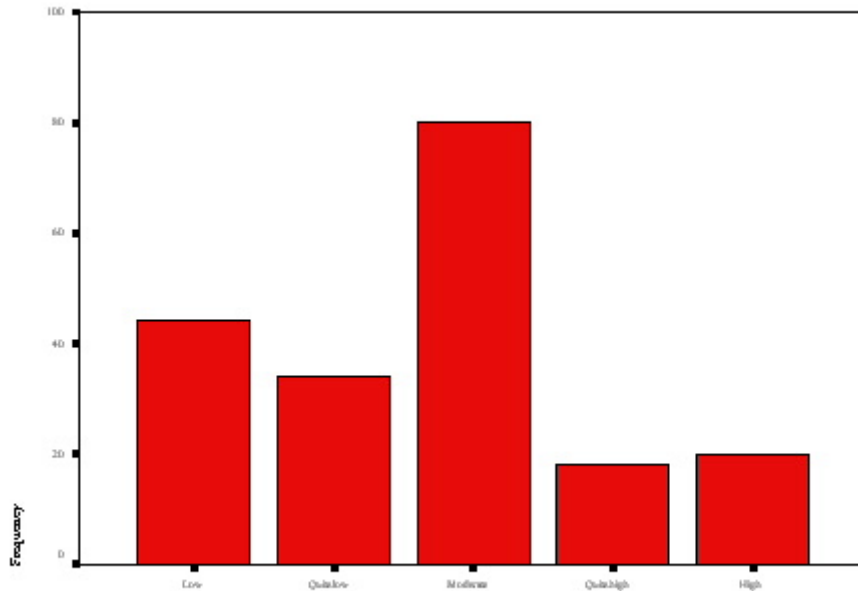
Appropriation of T2 Existing

Cluster 2- Rajchatewee

Cross clusters : S1 existing

Citizens from Chatujak Cluster not much satisfy with S1, but Rajchatewee cluster feels fine with it.

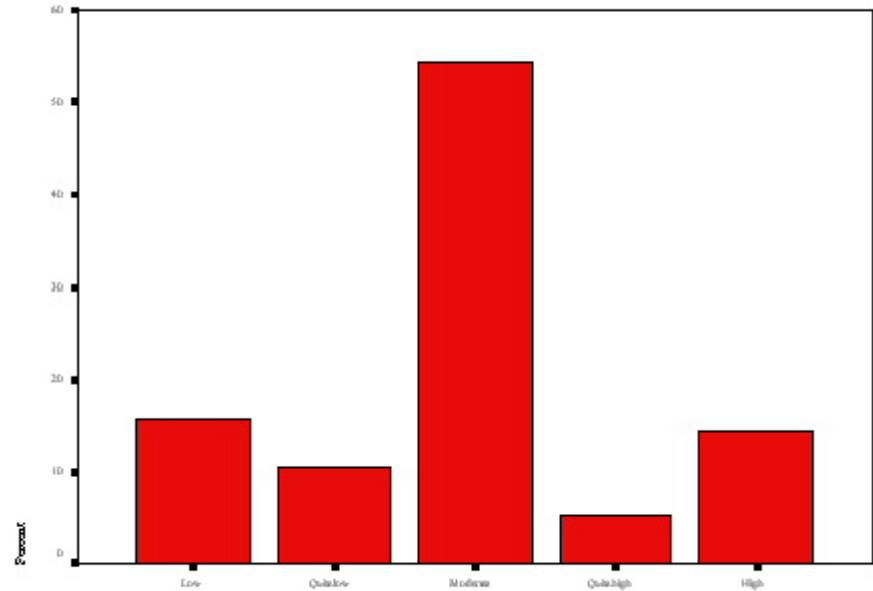
Appropriation of S1 Existing



Appropriation of S1 Existing

Cluster 1- Chatujak

Appropriation of S1 Existing



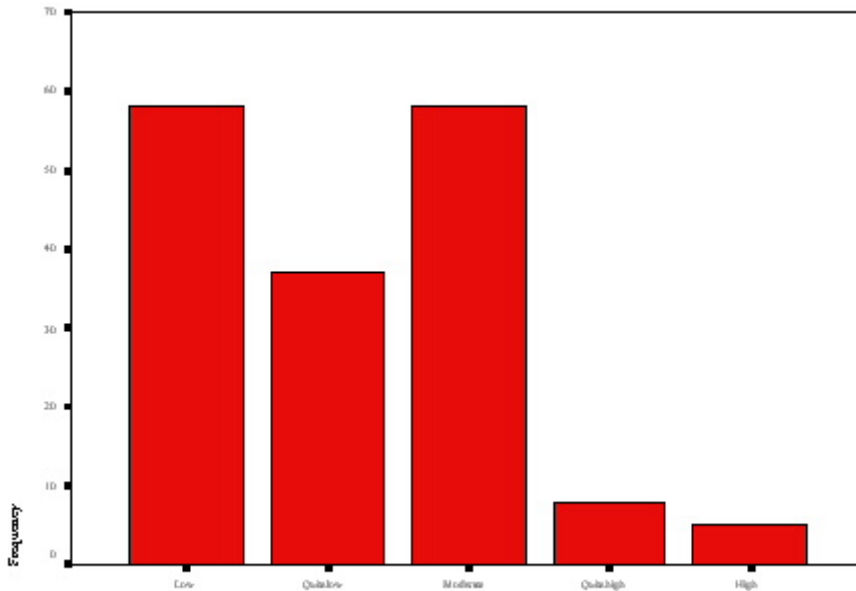
Appropriation of S1 Existing

Cluster 2- Rajchatewee

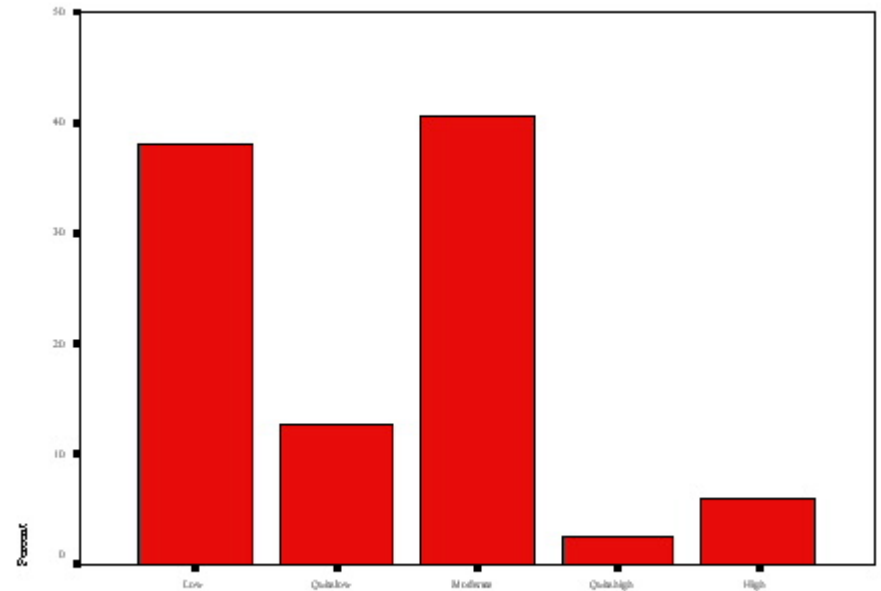
Cross clusters : S2 existing

Citizens from both clusters feel not satisfy with S2, especially Chatujak cluster

Appropriation of S2 Existing



Appropriation of S2 Existing



Appropriation of S2 Existing

Cluster 1- Chatujak

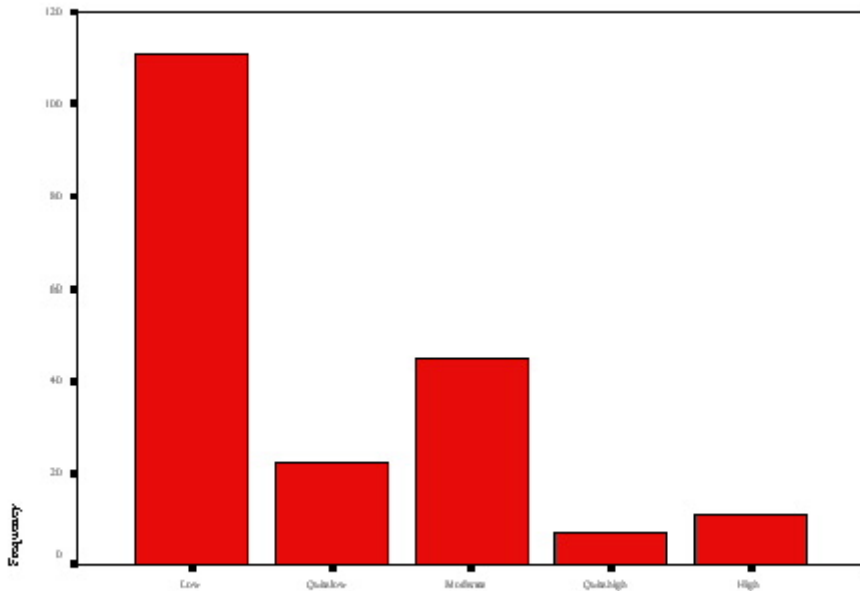
Appropriation of S2 Existing

Cluster 2- Rajchatewee

Cross clusters: E1 existing

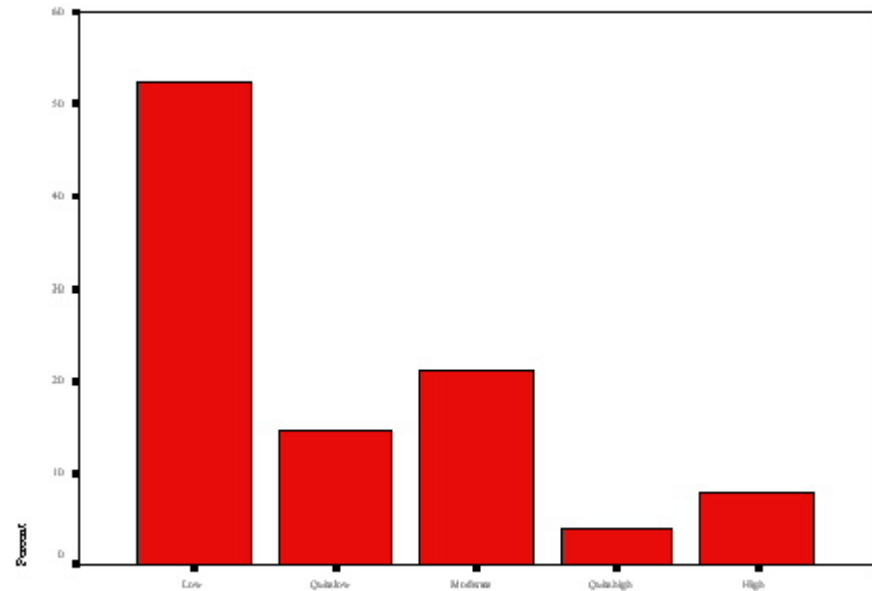
Citizens from both clusters feel not satisfy with E1

Appropriation of E1 Existing



Appropriation of E1 Existing

Appropriation of E1 Existing



Appropriation of E1 Existing

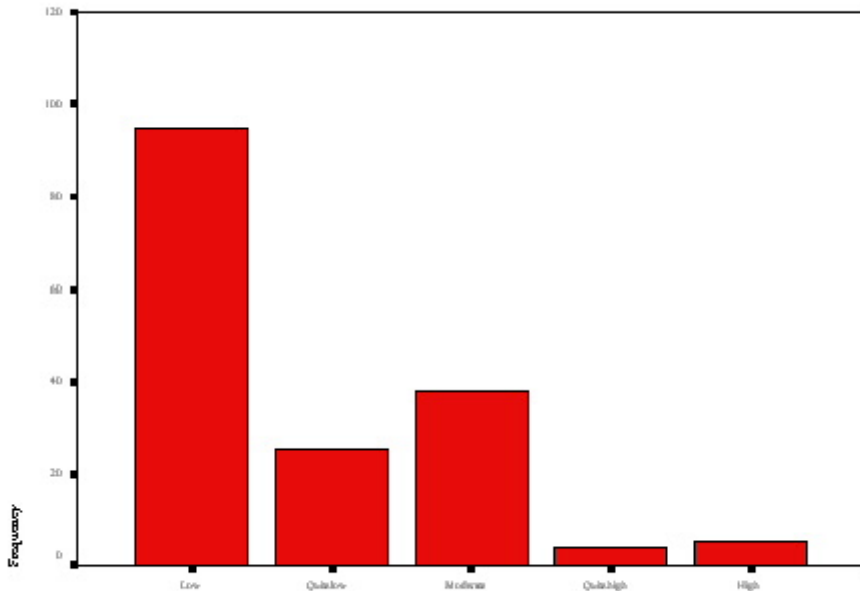
Cluster 1- Chatujak

Cluster 2- Rajchatewee

Cross clusters : E2 existing

Citizens from both clusters feel not satisfy with E2

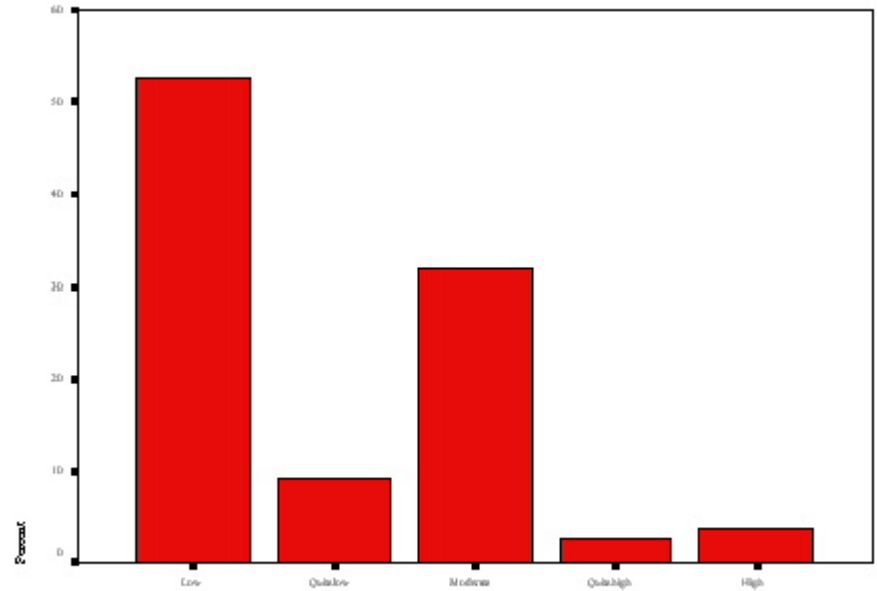
Appropriation of E2 Existing



Appropriation of E2 Existing

Cluster 1- Chatujak

Appropriation of E2 Existing

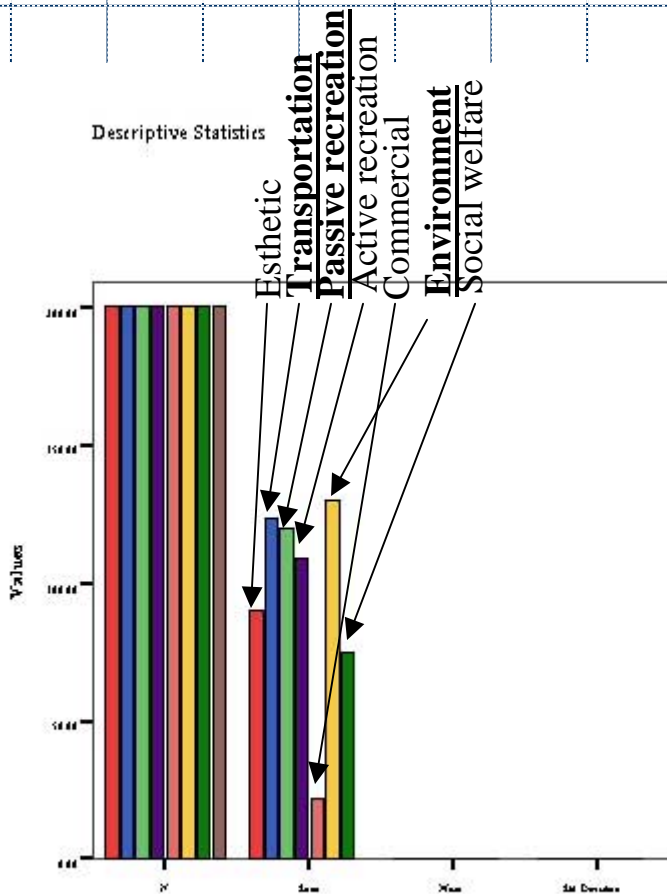


Appropriation of E2 Existing

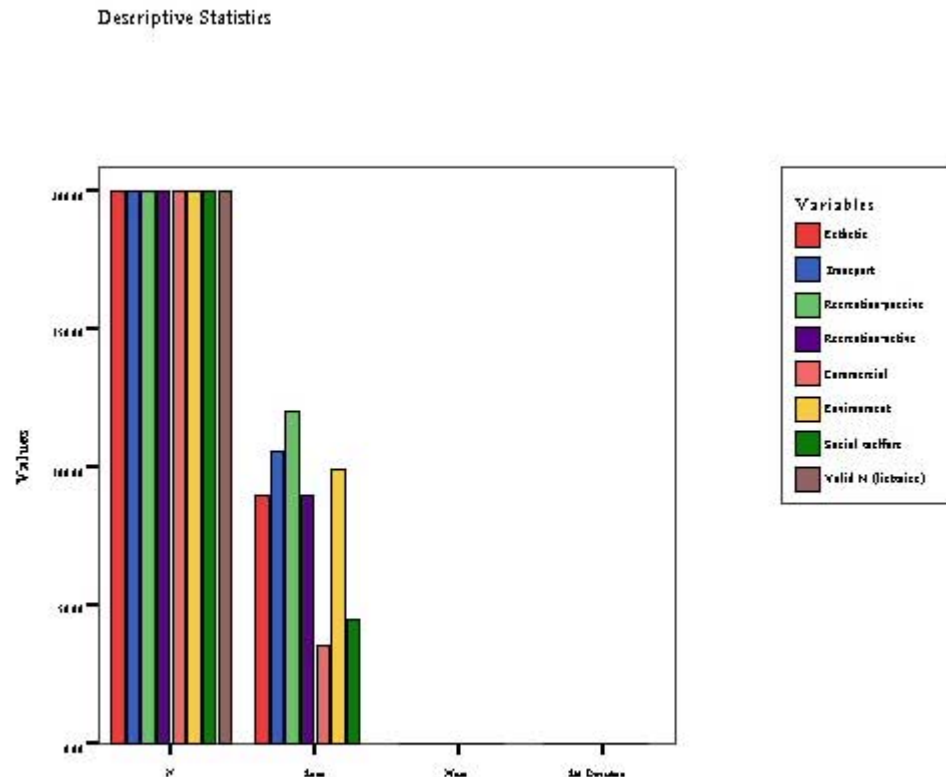
Cluster 2- Rajchatewee

Cross clusters: Overall directions

Citizens from both clusters have similar directions to Environment, Transport and Passive recreation.



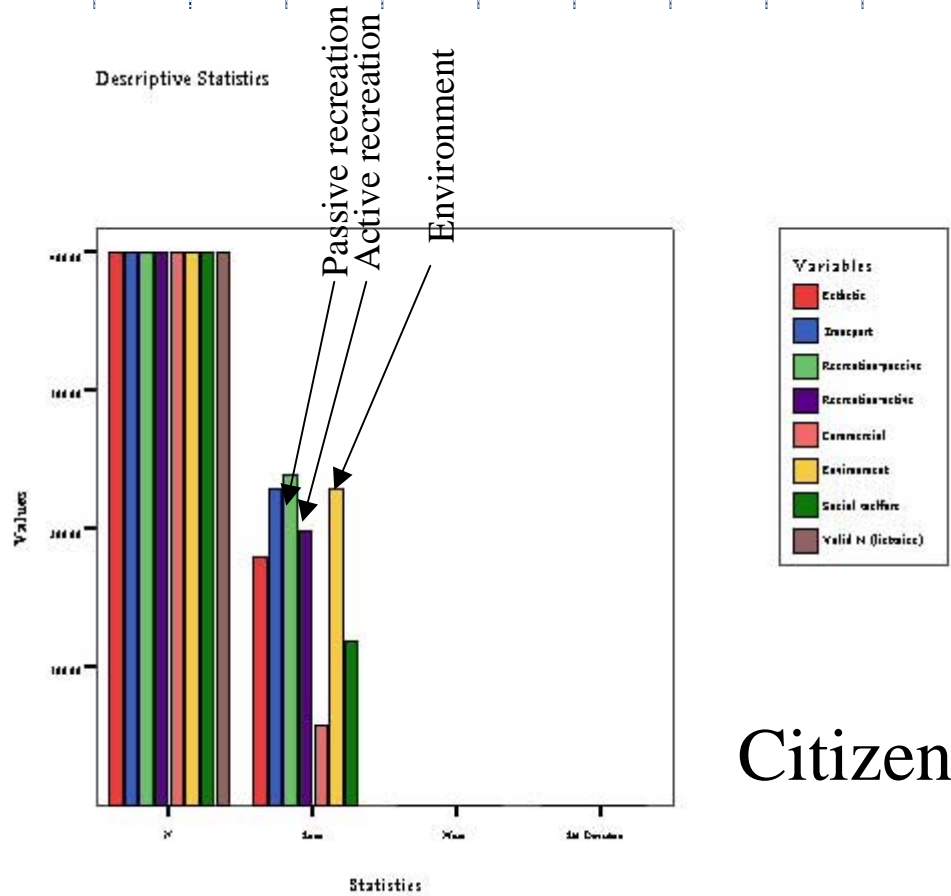
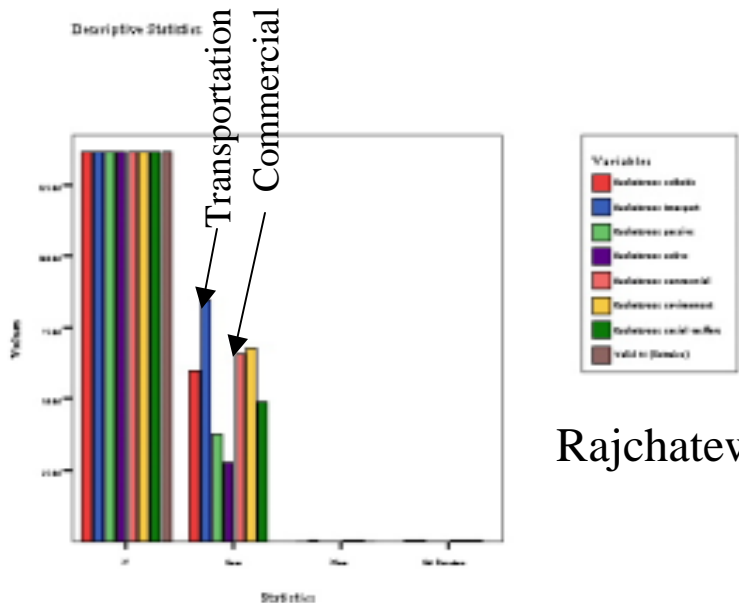
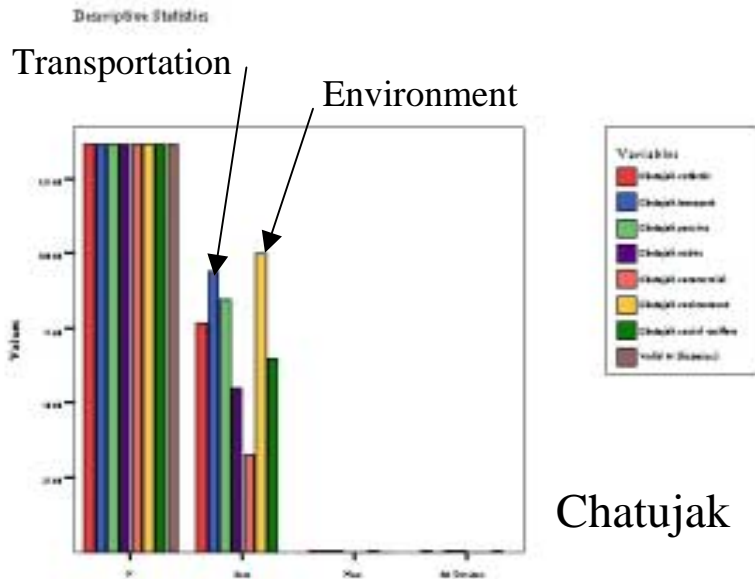
Cluster 1- Chatujak



Cluster 2- Rajchatewee

Cross actors : overall direction

- ◆ Citizens and involved organization have different directions on each plot.

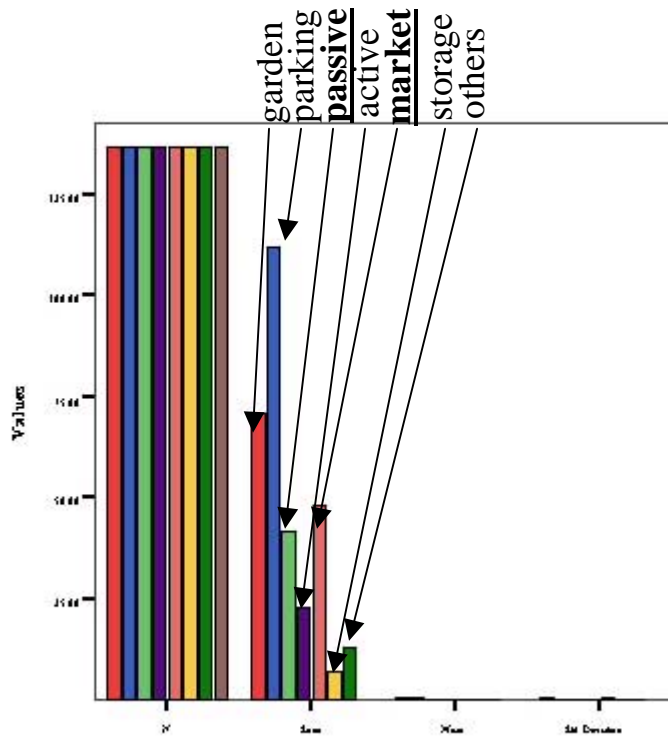


Involved organizations

Cross actors : T1 direction

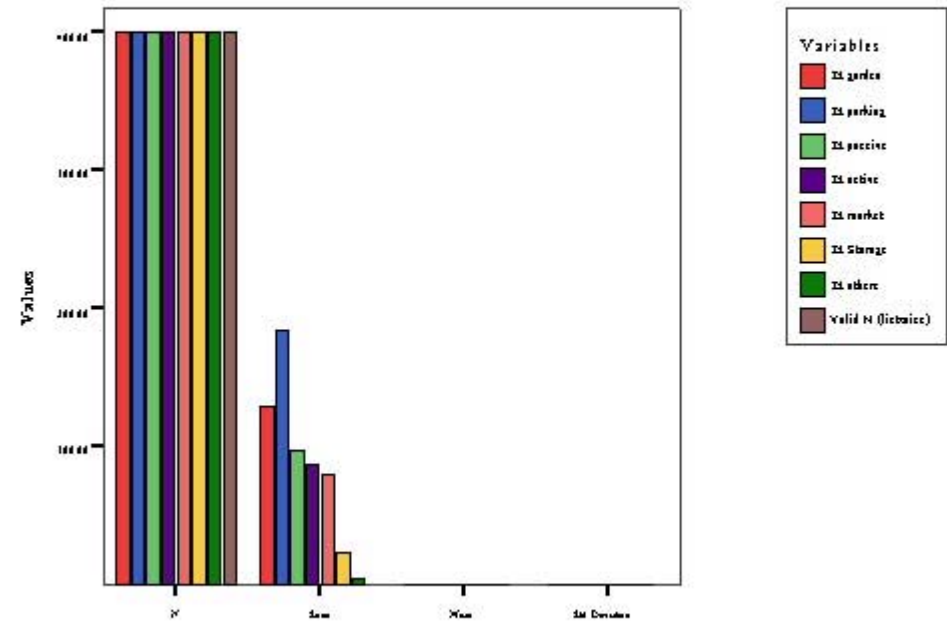
- ◆ Citizens from both clusters have similar directions on T1 to parking and garden, but in addition involved organization is interested in commercial.

Descriptive Statistics



Involved organizations

Descriptive Statistics

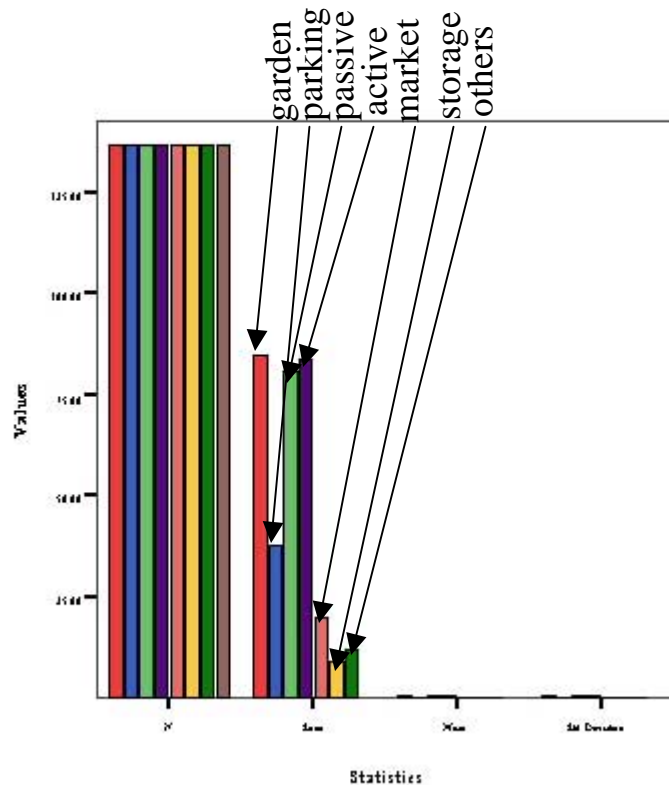


Citizen

Cross actors : S1 direction

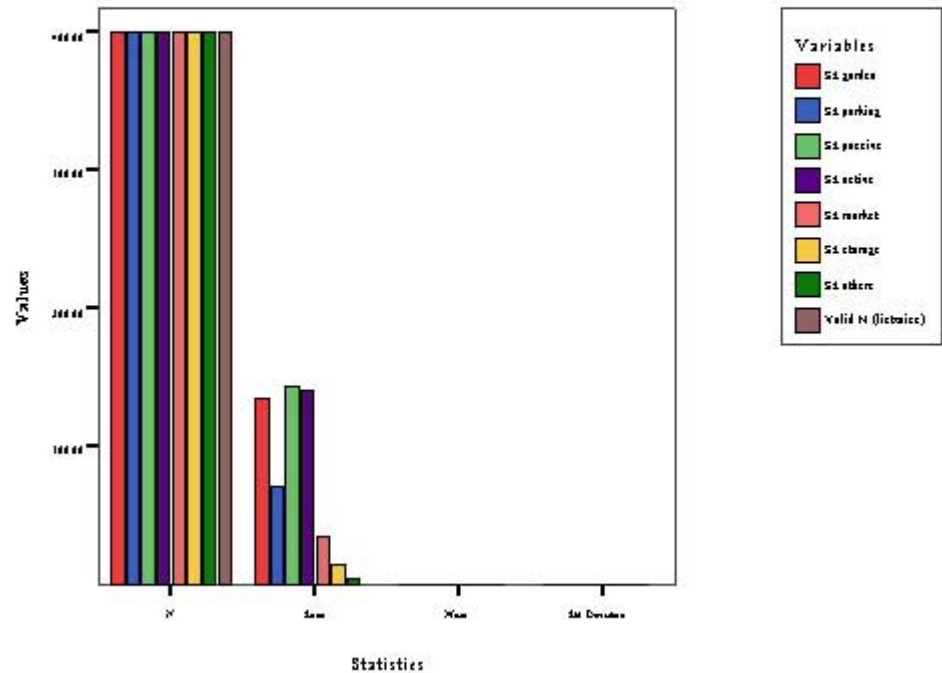
- ◆ Citizens from both clusters have similar directions on S1 to garden, Passive and active recreation.

Descriptive Statistics



Involved organizations

Descriptive Statistics

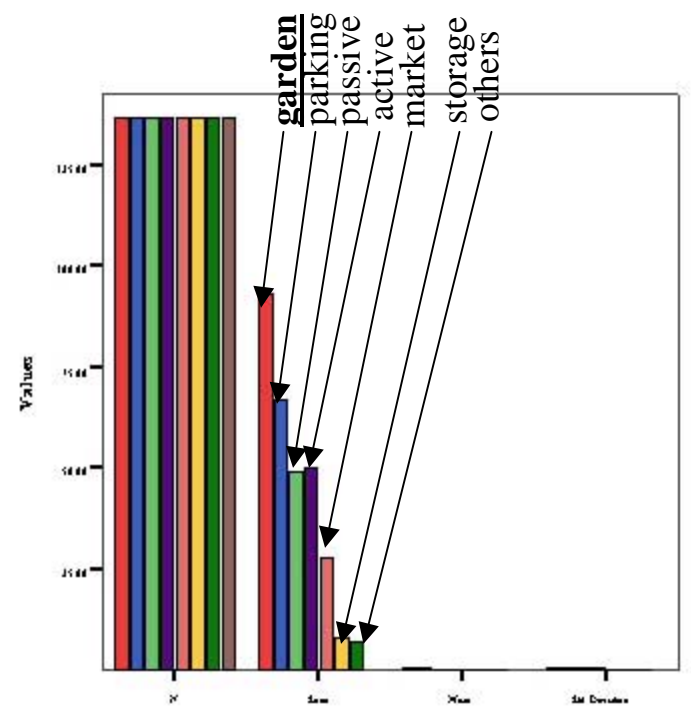


Citizen

Cross actors : E1 direction

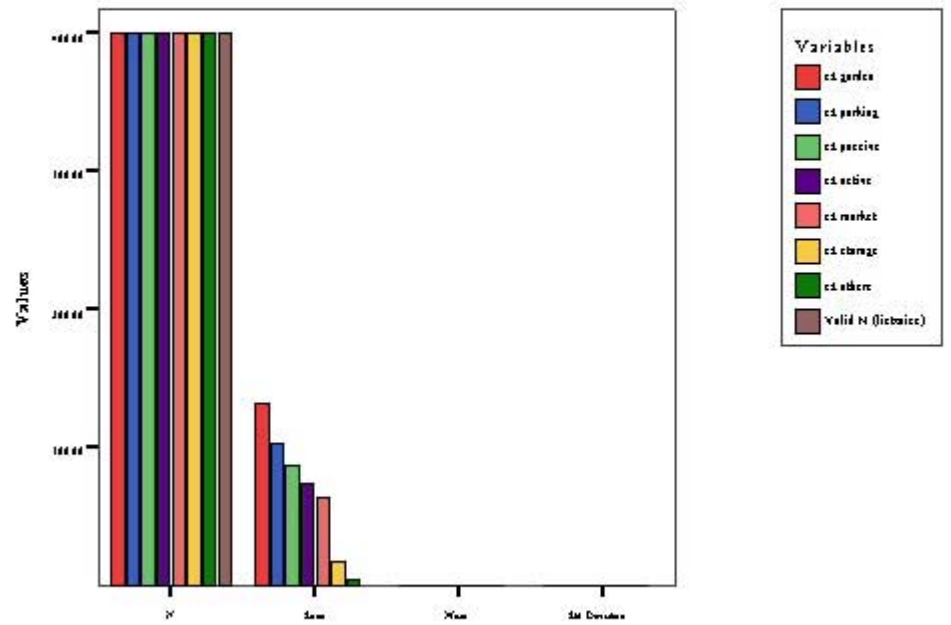
- ◆ Citizens from both clusters have similar directions on E1 to garden, parking and recreation.

Descriptive Statistics



Involved organizations

Descriptive Statistics

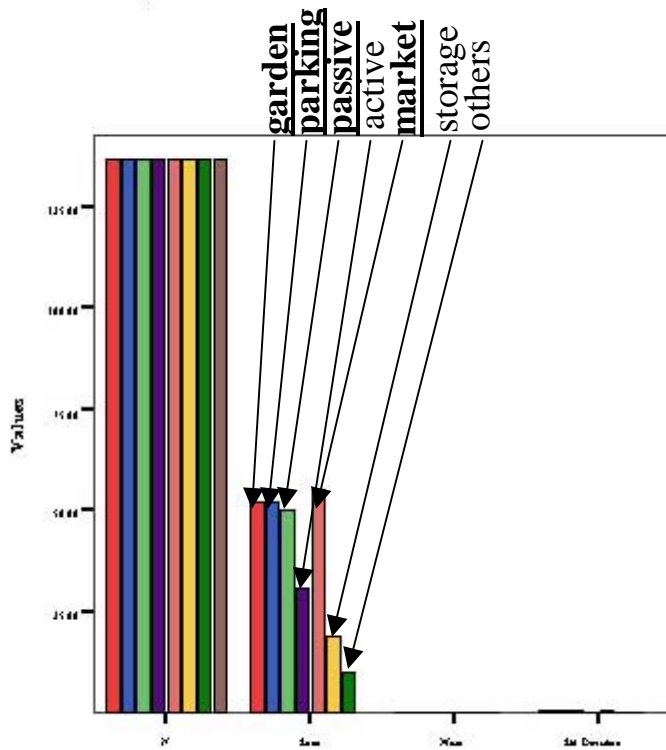


Citizen

Cross actors : T2 direction

- ◆ Citizens from both clusters have similar directions on T2 to garden but citizens prefer passive recreation to parking, involved organizations like both.

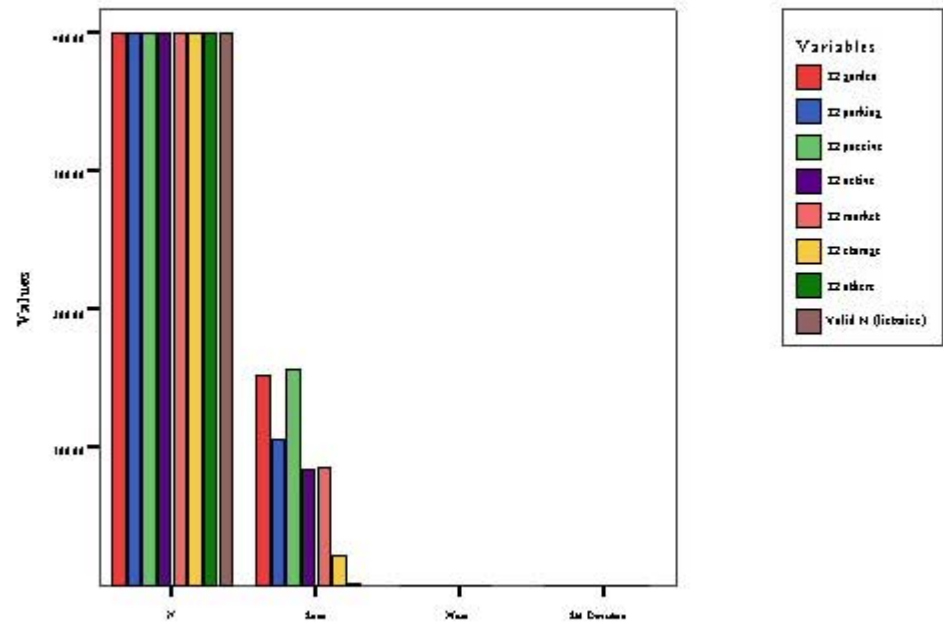
Descriptive Statistics



Statistics

Involved organizations

Descriptive Statistics



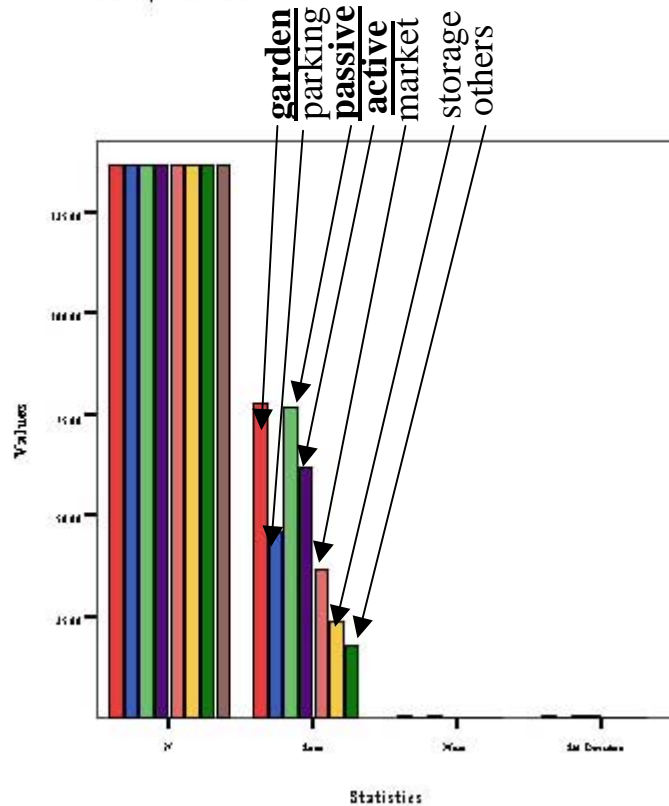
Statistics

Citizen

Cross actors : S2 direction

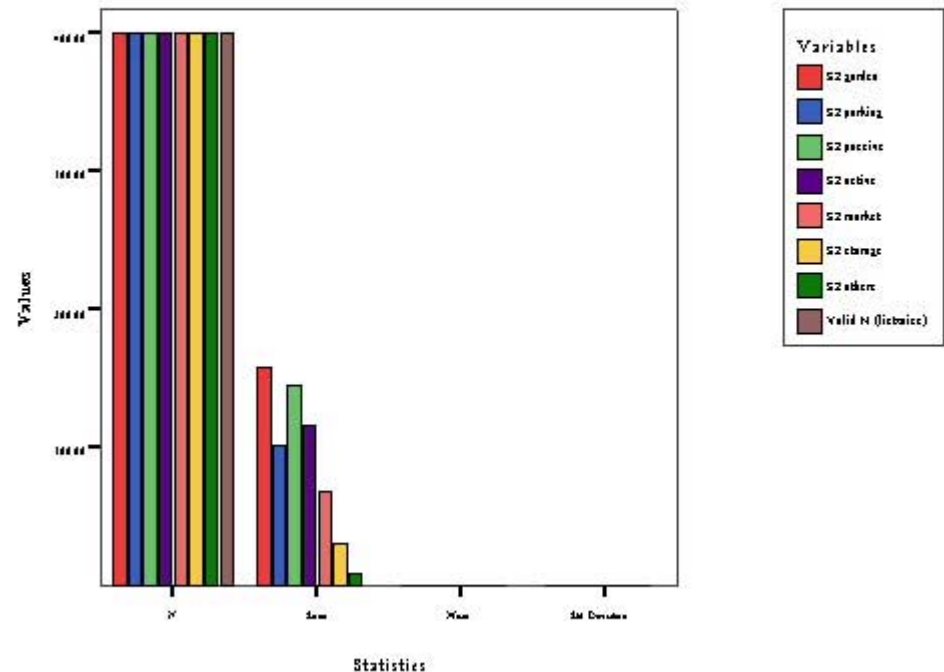
- ◆ Citizens from both clusters have similar directions on S2 to garden and recreation.

Descriptive Statistics



Involved organizations

Descriptive Statistics

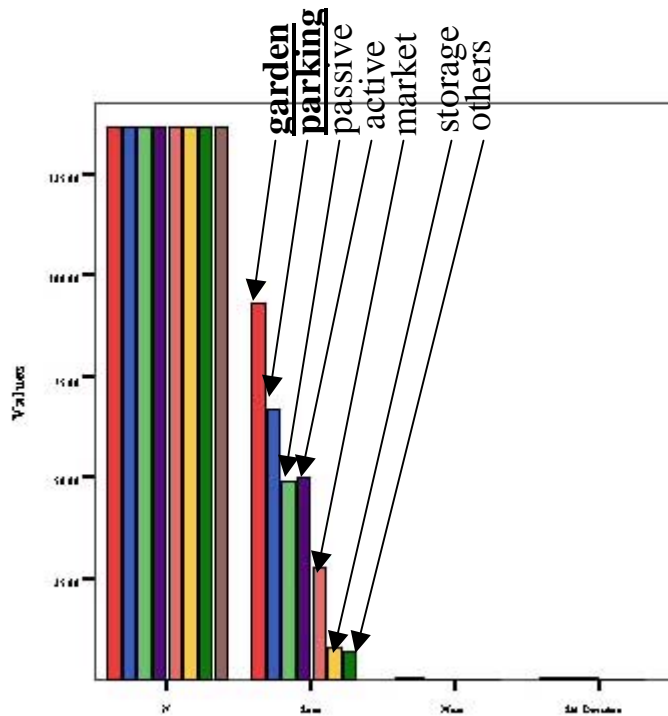


Citizen

Cross actors : E2 direction

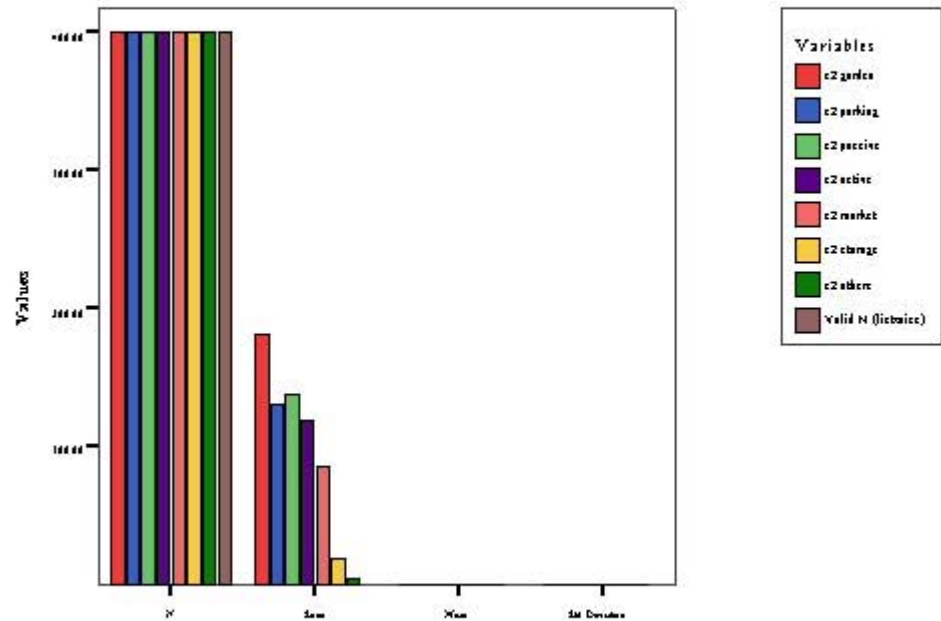
- ◆ Citizens from both clusters have similar directions on E1 to garden, recreation, and parking. (but involved organizations prefer parking to recreation)

Descriptive Statistics



Involved organizations

Descriptive Statistics



Citizen