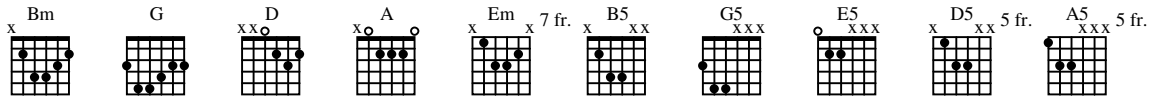


# LIVING IN TWILIGHT

As recorded by Epidemia

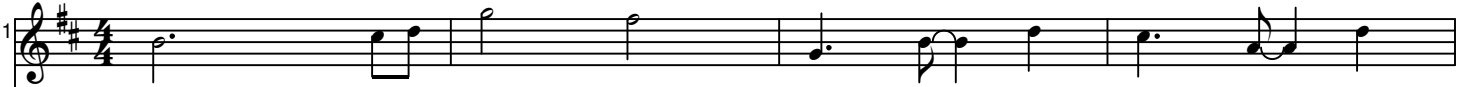
(From the 2001 Album ZAGADKA VOLSHEBNOY STRANY (BONUS TRACK))

Transcribed by Little Prince  
(<http://metalscript.homestead.com>)



## A Intro - Riff 1

Fast ♩ = 220



Gtrs III, IV



<b>T</b>		8	7			
<b>A</b>	9	6	7		5	4
<b>B</b>					7	6

*sl.*



Gtrs I, II

<b>T</b>						
<b>A</b>	4	4	4	4	4	4
<b>B</b>	2	2	2	2	2	2

5

Gtr III

T  
A 9 6 7 8 7 5 4 7 6 7 9  
B

Gtr IV

T  
A 7 5 7 7 5 5 4 7 6 7 9  
B

Gtrs I, II

T  
A 4 4 4 4 4 4 4 4 4 4 7 7 5  
B 2 2 2 2 2 2 2 2 2 2 5 5 5

9

Full

T  
A 7 6 7 7 4 8 (8) 8 7 5 5 7  
B

Full

T  
A 7 5 7 7 7 8 (8) 8 7 5 5 7  
B

Gtrs I, II

T  
A 4 4 4 4 4 4 4 4 4 4 7 7 5  
B 2 2 2 2 2 2 2 2 2 2 5 5 5

To Dbl. Coda

13

Gtrs III, IV

T 8 0 5 7 8 0 5 7 | 5 8 7 5 7 5 7 6 | 4 0 6 0 7 0 6 0 | 2 2 3 2 5 2 3 2

A

B

Gtrs I, II

P.M.-----|

T

A

B 2 2 2 2 2 2 2 2 | 2 2 2 2 2 2 2 2 | 5 5 5 5 5 5 5 5 | 7 7 7 7 7 7 7 7

**B** Riff 2



17

T 4 3 2 0 | 4 2 3 5 3 2 3 | 4 3 2 0 | 0 3 5 3 2

A

B P H P

T

A

B 4 4 2 | 4 4 2 | 4 4 2 | 4 4 2 | 5 5 7 7

**C** Riff 3

Bm  
Gtr V (synthesizer arranged for gtr)

G

D

A

21

P.M.-----|

**D** Verse

25

29

Gtrs I, II

33

Gtr I  
P.M.-----|

T			
A			
B	2 2 2 2 5 5 5 5	3 3 3 3 2 2 2 2	5 5 5 5 4 4 4 4

Gtr II  
P.M.-----|

T			
A			
B	5 5 5 5 4 4 4 4	2 2 2 2 5 5 5 5	4 4 4 4 7 7 7 7

37

Gtr IV

T	8 0 5 7 8 0 5 7	5 8 7 5 7 5 7 6	5 7 6 4	7 4 6 4 4 3 4
A			4 4 4 7 4 6 4	
B				

Gtrs I, II  
P.M.-----|

T				
A				
B	0 0 0 0 0 0 0 0	0 0 0 0 0 0 0 0	2 2 2 2 2 2 2 2	2 2 2 2 2 2 2 2

41

Gtrs I, II  
P.M.-----|

T				
A	4 4 4 4 4 4 4 4	4 4 4 4 4 4 4 4	5 5 5 5 5 5 5 5	4 4 4 4 4 4 4 4
B	2 2 2 2 2 2 2 2	2 2 2 2 2 2 2 2	5 5 5 5 5 5 5 5	2 2 2 2 2 2 2 2

45

Gtr IV

T	14 10	12 11 11	12 10	10 7	8 7 7 8 7	14 10	10 10	12 9	10 9	10 9
A		12				10	11 11	10	9	11
B		12			9		12		11	

P P P P

Gtr I

P.M.-----|

T										
A										
B	2 2 2 2 5 5 5 5	3 3 3 3 2 2 2 2	5 5 5 5 4 4 4 4	5 5 5 5 4 4 4 4						

Gtr II

P.M.-----|

T										
A										
B	5 5 5 5 4 4 4 4	2 2 2 2 5 5 5 5	4 4 4 4 7 7 7 7	4 4 4 4 7 7 7 7						

49

T	8 0 5 7 8 0 5 7	5 8 7 5 7 5 7 6	5 4 4 4 7 4 6 4	7 4 6 4 4 4 3 4
A				
B				

P.M.-----|

T										
A										
B	2 2 2 2 2 2 2 2	2 2 2 2 2 2 2 2	4 4 4 4 4 4 4 4	4 4 4 4 4 4 4 4						

**E** Chorus

53

Gtrs I, II

T	4 4 4 4	4 4 4 4		
A	4 4 4 4	4 4 4 4		
B	2 2 2 2	2 2 2 2	3 2 0	5 4 0

57

**Bm** **G** **D** **A**

Gtr V

P.M.-----|

<b>T</b>			
<b>A</b>	4 4 4 4 4 4 4 4	7 7	7
<b>B</b>	2 2 2 2 2 2 2 2	5 5 5 5 5 5 5 5	5

61

**Em** **G** **A** *D.S.*

P.M.-----|

<b>T</b>			
<b>A</b>			
<b>B</b>	2 2 2 2 2 2 2 2	2 2 2 2 2 2 2 2	5 5 5 5 5 5 5 5
	0 0 0 0 0 0 0 0	0 0 0 0 0 0 0 0	7 7 7 7 7 7 7 7
			5 5 5 5 5 5 5 5

**F** Riff 4

**B5** **G5** **E5** **D5** **A5**

Gtrs I, II

Gtr III *ff*

<b>T</b>				
<b>A</b>	7 6 4 4 7 6 4 4	7 6 4 0 7 6 4 0	8 7 5 0 8 7 5 0	7 7 5 7 8 7 5 6
<b>B</b>				

69

**B5** **G5** **E5** **D5** **A5**

<b>T</b>				
<b>A</b>	7 6 4 4 7 6 4 4	7 6 4 0 7 6 4 0	8 7 5 0 8 7 5 0	7 7 5 7 8 7 5 6
<b>B</b>				

**G** Guitar Solo

73

Full

A.H.

D

Gtrs I, II

P.M.

T	12	(12)	12	15	12	15 14 12	15 14 12	14	12 11	14 12 11
A										
B										

T										
A	4	4	4	4	4	4	4	4	4	4
B	2	2	2	2	2	2	2	2	2	2

T										
A	5	5	5	5	5	5	5	5	5	5
B	3	3	3	3	3	3	3	3	3	3

T										
A	2	2	2	2	2	2	2	2	2	2
B	0	0	0	0	0	0	0	0	0	0

T										
A	7	7	7	7	7	7	7	7	7	7
B	5	5	5	5	5	5	5	5	5	5

77

P.M.

T	7	4	4	6	7	4	4	6	8	0	5	7	8	0	5	7	8	0	7	0	5	0	3	0	12	10	10	9	10	10
A																														
B																														

T																														
A	4	4	4	4	4	4	4	4	4	4	4	4	4	4	4	4	4	4	4	4	4	4	4	4	4	4	4	4	4	4
B	2	2	2	2	2	2	2	2	2	2	2	2	2	2	2	2	2	2	2	2	2	2	2	2	2	2	2	2	2	2

T																														
A	5	5	5	5	5	5	5	5	5	5	5	5	5	5	5	5	5	5	5	5	5	5	5	5	5	5	5	5	5	5
B	3	3	3	3	3	3	3	3	3	3	3	3	3	3	3	3	3	3	3	3	3	3	3	3	3	3	3	3	3	3

T																														
A	2	2	2	2	2	2	2	2	2	2	2	2	2	2	2	2	2	2	2	2	2	2	2	2	2	2	2	2	2	2
B	0	0	0	0	0	0	0	0	0	0	0	0	0	0	0	0	0	0	0	0	0	0	0	0	0	0	0	0	0	0

T																														
A	7	7	7	7	7	7	7	7	7	7	7	7	7	7	7	7	7	7	7	7	7	7	7	7	7	7	7	7	7	7
B	5	5	5	5	5	5	5	5	5	5	5	5	5	5	5	5	5	5	5	5	5	5	5	5	5	5	5	5	5	5



81

T 15 7 0 7 15 7 17 7 0 7 17 7 15 7 0 7 15 7 9 5 0 5 9 5 0 5

A

B

TP P H T P TP P H T P TP P H T P P P P P

P.M.-----|

T

A 4 4 4 4 4 4 4 4 5 5 5 5 5 5 5 5 2 2 2 2 2 2 2 2 7 7 7 7 7 7 7 7

B 2 2 2 2 2 2 2 2 3 3 3 3 3 3 3 3 0 0 0 0 0 0 0 0 5 5 5 5 5 5 5 5

*D.S.S. al Dbl. Coda*

85

T 10 9 0 10 7 0 12 0 10 9 0 10 0 [5] [5] [5] [7] 7

A

B

N.H.-----|

P.M.-----|

T

A 4 4 4 4 4 4 4 4 5 5 5 5 5 5 5 5 2 2 2 2 2 2 2 2 7 7 7 7 7 7 7 7

B 2 2 2 2 2 2 2 2 3 3 3 3 3 3 3 3 0 0 0 0 0 0 0 0 5 5 5 5 5 5 5 5

**H** Out-Chorus

Gtrs III, IV

89

T 12

A

B

Gtrs I, II

P.M.-----|

T

A 2 2 2 2 2 2 2 2 2 2 2 2 2 2 5 5 5 5 5 5 5 5 7 7 7 7 7 7 7 7

B 0 0 0 0 0 0 0 0 0 0 0 0 0 0 3 3 3 3 3 3 3 3 5 5 5 5 5 5 5 5

105

T  
A  
B

109

Bm Gtr V G D A

P.M.-----|

T  
A  
B

113

Em G A

P.M.-----|

T  
A  
B

I Outro


117


Gtr III H

Gtrs I, II

T  
A  
B


121

Bm Gtr V  G D A



4x

T	4	3	2	2	4	2	3	5	3	2	3	2	3	2	3	5	3	2	2
A	4				4					2				2		2		2	3
B																			



4x




P.M.-----|

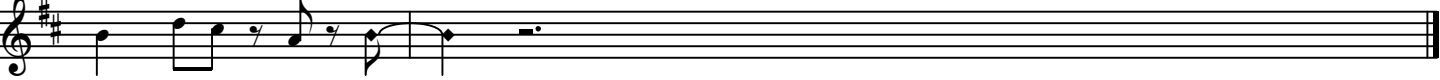
T																			
A	4	4	4	4	4	4	4	4	4	4	4	4	4	4	4	4	4	4	4
B	2	2	2	2	2	2	2	2	2	2	2	2	2	2	2	2	2	2	2

T																			
A	5	5	5	5	5	5	5	5	5	5	5	5	5	5	5	5	5	5	5
B	3	3	3	3	3	3	3	3	3	3	3	3	3	3	3	3	3	3	3

T																			
A	7	7	7	7	7	7	7	7	7	7	7	7	7	7	7	7	7	7	7
B	5	5	5	5	5	5	5	5	5	5	5	5	5	5	5	5	5	5	5

125

B5 Gtrs I, II   



N.H.-----|

T	4	3	2	2	[4]	[(4)]
A	4					
B						