



Affiliation:
NORTH
CENTRAL
CAMERA
CLUB
COUNCIL

PHOTOGRAM



Mitchell Camera Club - Mitchell, SD

Since 1953

April 2004

Page 1



And the winners are:



1st place in the monthly print contest was "Glass & Rose" by Mary Ellen Jepsen.



1st place in the monthly slide contest was "Rough Loc Falls" by Ty Smith.

(Continued on page 2)

Getting to Know You



Mary Ellen Jepsen joined the Mitchell Camera Club in October 1991. She was born on June 28, 1942 in Indianapolis, IN and has been a RN for 39 years. She works at A2OP surgery at Queen of Peace Hospital.

Mary Ellen first became interested in photography through 4-H. She learned about the camera club while touring the local Art-in-the-Park and found Jerry Metcalf manning the club's booth.

Her first camera was a Kodak Brownie, and she has been actively involved with photography for 45 years. She currently uses an Olympus Infinity Zoom 105 and a Yashica Elite Zoom 140. She says she prefers her point & shoot cameras, because she is usually in a hurry. She says her "oldest" piece of camera equipment is her eyes.

Her favorite type of pictures to take is of vacation scenery. Mary travels to Wisconsin quite often to visit her mother and brother.

Mary is our club's secretary / treasurer and is always willing to help out with club projects.



Calendar of Events

10:00 each Saturday morning, coffee at Jet Photo

March 29 – deadline for club contest. Get your entries to Mitchell Tech, 821 N. Capital room 112 by 7:00 PM.

Judges are: Clare or Carl, Cam & Dean

April 1 – regular meeting at Mitchell Tech. 7:00 is the social time, 7:30 PM the meeting begins.

April 3– Ty Smith's reception at MBM-OHAC, 5:30 PM

April 25 - Fourth Annual Worldwide Pinhole Photography Day. (See page 3 for more details.)

April 30 – May 2 – Springbrook mini-convention.

May 8 – Annual "Best of Show" banquet will be held at The Brig. Happy hour 6:00 PM, dinner at 7:00 PM.

September 25 – 27 – N4C convention at Iowa City, Iowa

2003 – 2004 OFFICERS

President.....Carl Eastman
300 S. Wisconsin, Mitchell
605 – 996- 5238

Vice President &.....Lowell Stanley
Local Contest PO Box 215, Wessington Springs
605 – 539- 1927

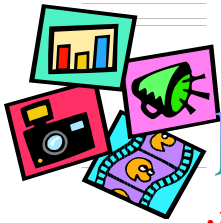
Secretary/Treasurer.....Mary Ellen Jepsen
1100 E. 7th Ave., Mitchell
605 – 996- 1435

N4 C Contact.....Dean Randall
Box 344, Emery
605 – 449- 4483

N4 C Contest Chairmen.....

Ed Kaufman	Ty Smith
701 S. Kimball	119 W. Elm St.
Mitchell, SD	Mitchell, SD
605 – 996- 3417	605 – 999- 1338

:PHOTOGRAM Editor.....Marge Bollack
1215 W. 5th Ave., Mitchell
605 – 996- 6158



Bring a friend to club!

:PHOTOGRAM

Official Publication of the
MITCHELL CAMERA CLUB

Published monthly – September through May

ANNUAL DUES

Single membership \$15.00

Family membership \$20.00

AFFILIATION

North Central Camera Club Council

MEETINGS

The first Thursday of each month, September through May, at 7:30 PM, at Mitchell Technical Institute, 821 N. Capital, Mitchell, SD.

ADDRESSES

E-mail – mitchellcamera@yahoo.com

Web Site – www.geocities.com/mitchellcamera/

And the winners are:

Topics for March were "Motion" and "Still Life"

Prints: 5 members entered 11 prints.

1st place "Glass & Flowers" by Mary Ellen Jepsen 33pts.

2nd place "I've Just Got To Have Another Cigarette" by Lowell Stanley 32pts.

3rd place "Wine & Roses" by Mary Ellen Jepsen 32pts.

1st HM "Sturgis Biker" by Dean Randall 31pts.

2nd HM "Very Still Life" by Lowell Stanley 29pts.

3rd HM "Pretty Enough to Eat" by Mary Ellen Jepsen 28pts.

Slide: 6 members entered 16 slides.

1st place "Rough Loc Falls" by Ty Smith 38pts.

2nd place "A Patriotic Movement" by Jerry Metcalf 36pts.

3rd place "Cruisin' Central" by Ty Smith 35pts.

1st HM "Stop Action" by Jerry Metcalf 34pts.

2nd HM "Pure Color" by Lowell Stanley 33pts.

N4C Color Slides:

Merit "Ceiling of Caesar's Palace in Infrared" by Ty Smith 35pts.

N4C Travel Slides:

Merit "Along the Cheyenne River" by Dean Randall 37pts.

Merit "Mitten" by David Young 36pts.



Club Notes

Attendance: There were 9 members and no guests.

Treasurer's Report: There is \$128.71 in our account.

Program for April: Greg Latza will be here to speak about his SD photography at 7:30 PM.

Announcements: Ty Smith invited all the club members to attend the opening reception for his photography exhibit at the Middle Border Museum & Oscar Howe Art Center on **April 3rd** from 5:30 to 8:00 PM. All of the prints on exhibit will be for sale along with T-shirts. Wine & cheese will be served.

The coffeehouse downtown next to Northwestern Public Service is looking for art to display. Stop in and speak with the owner if you have any to exhibit.



THE PRESIDENT'S VIEW

Here we are, nearing the end of another year for our club. This means that our "Best of Show" banquet in May is coming up and we all need to remember to bring in our entries for that contest, to our April meeting. The banquet will be held at "The Brig". Mary Ellen will need to know if you are planning on attending.

I also wanted to remind everyone that we would need people to volunteer to take officer positions. We will go over which positions will need to be filled at our April meeting.

Greg Latza will give the program at our April meeting. He is a very interesting speaker, and brings a nice selection of slides with him. He will explain the unique camera angles he uses in his photography, and he will have some of his books for sale that night.

Ty Smith is having 32 prints on exhibit entitled, "Ceremonial Make-up" at the Middle Border Museum & Oscar Howe Art Center beginning April 1st and running to the end of the month. On April 3rd, from 5:30 PM to 8:00 PM, there will be an artist's reception for him. Everyone is invited.

So, as you can see the next month or so is going to be a busy one. Until next time.....

C a r l



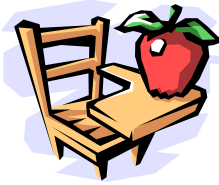
Topics for 2003/2004

March – Motion / Still Life

April – The color **GREEN** /

Obvious digital Manipulation

May – Best Of Show



PHOTOGRAPHY 101

Composition

One of the simplest techniques for improving most photographs is to concentrate on composition. Composition is defined as "a pleasing arrangement of the *elements* and *subjects* in a photograph. An element is anything, which is visible in a photograph. The subject is the most important element.

Many people say that artistic talent can't be taught. That may or may not be true. There are, however, some basic guidelines that can be used to make an image more pleasing. Keep in mind, the following are only guidelines, and dramatic effects can still be achieved by *not* using them.

RULES OF THIRDS is used in more photographs than any other guideline. Each scene is divided in thirds, like the grid of a tick-tack-toe board. Place the most important element (subject) in the intersection of two of the lines of the grid. This helps give the image balance. A moving subject should appear to be moving *into* the scene. If the subject is a person, he should be looking into the scene, not toward the edges of the photo. The eyes of the viewer will tend to follow the eyes of the subject. If the subject is looking at a mountain range, it will draw the viewer's eyes to look at the same thing.

Another rule of thirds is to place any horizontal line that continues all the way through a photo on one of the third lines. The horizon line for a sunset would be placed on the lower third. This keeps the image from being "cut in half" and give it more impact.

TRIANGLES also help to balance a photograph. Any time there are three or more subjects in a scene it is best to arrange them in triangles to lend a casual appearance. Triangles have even more appeal if they are not the same height or width, and their sides should not run parallel with any of the sides of the photograph.

People and flowers are just two subjects that lend themselves well to this arrangement.

Next month: Using a strong center of interest.



**The Editor's
'THIS & THAT'**

The Fourth Annual Worldwide Pinhole Photography Day will be April 25, 2004.

People throughout the world are invited to make a pinhole photograph during these twenty-four hours. Each photographer will be able to submit one image to the international WPPD gallery at www.pinholeday.org.

This event is absolutely popular, egalitarian and open to anybody, anywhere. All lovers of lens-less photography, as well as people who have never tried this creative and enjoyable technique, are encouraged to participate.

Pinhole photographs are made without lenses, using a tiny hole as the image-forming device. Photographs are made with simple and inexpensive tools: from shoe boxes and tin cans to pinholes fitted on regular cameras. A world of pure creativity, a tender and joyful approach to photography, and the discovery of the emotion and the wonder of the photographic action itself, far from the excessive and oppressive power of extreme technology, await the pinhole photographer.

The WPPD web exhibition of 2001 showed 291 pictures by pinhole photographers from 24 nations, the 2002 exhibition contained 903 photographs from 35 nations; in 2003, 1082 pinhole photographers from 43 nations participated.

On 25 April 2004 there will be numerous events all over the world dedicated to the pinhole photography:

meetings, lectures, workshops and informal gatherings to celebrate the Fourth Worldwide Pinhole Photography Day and to increase the former editions' success.

WPPD is the result of the work of a group of volunteers from across the globe. Their combined efforts and individual skills contribute to make this event an ever-growing success, allowing more and more people to discover the beauty and mysteries of pinhole photography.

For more detailed information about WPPD4 visit the dedicated web site at www.pinholeday.org.

I hope to see some of our club members enter into this "back to the basics" contest. It could be a lot of fun.

Marge

Classified

Need to sell some gently used camera equipment? As a paid member you may run a six line by one column wide ad, free. For any lines over six, please pay the treasurer \$1.00 each. Limit one free ad, per member, per month. This ad will also appear on our web-site!

For Sale: Panoramic slide mounts 17 X 35mm. These are "Gepe" thin glass mounts with the aperture centered on a regular 35mm frame. You can move your film chip up or down, then tape it in place. \$10.00 per box of 20 mounts, plus some postage if you want them mailed. Contact Dean Randall at Box 344, Emery, SD 57332.

Marge Bollack
MITCHELL CAMERA CLUB
1215 W. 5th Avenue
Mitchell, SD 57301
