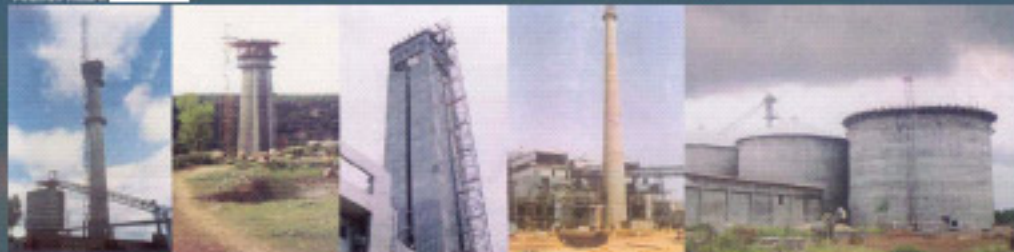




ISO 9001:2015 Registered company  
Certificate Number: \_\_\_\_\_



# CORPORATE PROFILE

**SLIPCO CONSTRUCTIONS PVT LTD**



ISO 9001:2000 Certified company

ISO 9001:2000 Certified company



## Information at a glance

- REGISTERED OFFICE : SLIPCO CONSTRUCTIONS PVTLTD  
332 Southex Plaza - II, Masjid Mohd NDSE - II  
New Delhi-110049
- TELEPHONE NOS. : 26168560 TELKFAX - 26256461
- EMAIL : slipco@vsnl.com
- HEAD OFFICE : U-I, Shanti Kunj, Green Park Extn., New Delhi - 110016
- MOBILE NO. : 9810077525 TELEFAX • 26171910
- OUR PAN NO. : AACB58847D. 6/11/82
- OUR P.F. NO. : DL-16413
- SALES TAX NO. : LC/97/178/72204/94
- OUR BANKERS : M/s Canara Bank, East of Kailash, New Delhi  
State Bank of Indore, Green Park Extn., New Delhi
- FINANCIAL STATUS : We enjoy good relations with our bankers and possess  
Bank solvency certificate of Rs. 10 Crores
- REGISTERED WITH : Haryana Public Health Deptt., Haryana Police Housing Corpn., BHEL,  
EPIL, BSES, NBCC, NPCC, STAL, UP Cooperative Sugar Mills Ltd,  
Haryana Cooperative Sugar Mills Ltd, MP Cooperative Sugar Mills Ltd,  
Markfed, Punjab Cooperative Sugar Mills Ltd

**SCPL is committed to customer satisfaction through quality work at competitive prices**





Civil works in progress at  
Tasek Cement, Malaysia



Civil & structural work for  
Captive power plant at  
Belrampur Sugar Mills, Gonda



Reinforcement work in  
progress at Banjari Cement



180 m RCC taper chimney  
of GEB, Kutch, Gujarat

## BRIEF INTRODUCTION

SLIPCO Constructions Pvt Ltd was promoted in 1982 by Er. S.K. Grover a Bachelor of Civil Engineering from Thapar Institute of Engineering & Technology, Patiala, 1972, Fellow Institution of Engineers (India), Member ICI, Chartered Engineer, who is also the Managing Director of the company. He was also instrumental in indigenising slipform equipment. He's also the author of the book 'A TRAIL BLAZING JOURNEY OF TECHNOLOGICAL EXCELLENCE FROM SWEDEN TO INDIA'.

The company is specialized in providing complete turnkey engineering packages from construction to commissioning of power plants, cement plants, sugar plants, paper plants, steel plants, distilleries and other Heavy Industries. The company is also specialised in Slipform Technology and has executed turnkey projects of RCC Chimnies & RCC Silos for power, cement & sugar Industry.

Our expertise is reflected in each of our works be it bridges or industrial structures, power projects, high rise structures (RCC Chimneys / Silos), bulk storage facilities, hydraulic works. All are demonstrative of the spirit that motivates us.

Inspite of stiff global competition, SCPL entered global market in the year 1996-97 and executed four nos cement Silos in Bhutan, Sri Lanka and Malaysia and thereafter immediately executed two more projects of Malaysia and Sri Lanka in the year 1997-98 and the trend is upwards. Recently SCPL has executed a power project in Indonesia where total civil works of RCC Chimney of 125m was in SCPL's scope.

SCPL is dedicated to engineering expertise and combines extensive staff experience with modern techniques, computer aided designs, QA/QC procedures of ISO Standards and advanced fabrication and installation methods to produce a precise engineering and very cost effective service.

SCPL has its own in house design and architectural facilities to help clear the projects and clarify the clients doubts or make changes as desired by them.

You can judge the company on an exclusive interview with our team of construction and design engineers. Many companies have completed their projects months ahead of schedule due to our innovative ideas and adoption of latest technologies. A prime example is the Air Traffic control tower at Santa Cruz Airport, Mumbai where innovative use of slipform technique saved atleast 4 months. Lateral thinking is our forte.

Attention to minutest of the details ensures client receives the highest level of technical services and total company involvement. Safety is the foremost consideration in all SCPL works.

Quality construction and speedy completion have been the hallmark of our company. Our motto is 'Quality with Speed'.





Taper Chimney assembly in progress



Straight Chimney construction at JSPL, Raigarh



Slipforming of 24 Nos. columns (22 m height) without beam for Bagasse Shed for Balrampur Sugar mill, Gonda UP - First time in the history of Slipforming in India



Safety check of Passenger lift before commencing slipforming for 90m taper chimney at OCFL, Orissa

## LIST OF PLANT AND MACHINERY\*

EARTH RAMMERS	8 Nos.
LEVEL INSTRUMENTS	6 Nos.
THEODOLITES	6 Nos.
GENERATORS (DIESEL)	5 Nos.
VIBRATOR NEEDLES	12 Nos.
CUBE TESTING MACHINES	24 Nos.
WATER PUMPS (ELECTRIC)	8 Nos.
MIXER MACHINES	8 Nos.
MARBLE CUTTING MACHINE	1 Nos.
STAGING & SHUTTERING MATERIAL	As per requirement at site
EXCAVATORS	8 Nos.
LOADERS	8 Nos.
TIPPERS/DUMPERS	51 Nos.
BATCHING PLANT w TRANSIT MIXER	1+3
CONCRETING LIFT/HOIST TOWER	8 Nos.
PASSENGER HOISTS	3 Nos.
GENERATORS SETS	2 NOS
VIBRATORS	26 NOS.
STRAIGHT SLIPFORM EQUIPMENT	70 YOKE SETS
TAPERED SLIPFORM EQUIPMENT	48 YOKE SETS
PLATE ROLLING MACHINE	2 NOS.
HYDRAULIC JACKS (3 TON) SETS	300 NOS.
HYDRAULIC JACKS (6 TON) SETS	90 NOS.
HYDRAULIC POWER PACKS	12 NOS.
WELDING MACHINES	15 NOS (ELECTRIC RUN)
WELDING RECTIFIERS	10 NOS (DIESEL RUN).
DRILL MACHINE	05 NOS.
HAND GRINDERS	35 NOS.
BENCH GRINDERS	4 NOS.
CUBE TEST MACHINES	10 NOS.
PUG CUTTING MACHINES	4 NOS
HYDRA FOR ERECTION	3 SETS
WINCH MACHINES	12
SHUTTERING STEEL PLATES	As per site requirement
ACRO SPANS/WELDED BEAM	1000 Nos.
VEHICLES (JEEP)	3 Nos.

**\*We are always willing to invest in new machinery if so dictated by the project.**

## EQUIPMENT SUPPLY DIVISION

Our Equipment supply division has indigenised many foreign machinery and has been supplying slipform equipment like Jacks, Shuttering plates, Hydraulic pumps to many customers in India and abroad. Our construction machinery division has also executed many export orders since 1997 till date and many more are in pipeline.

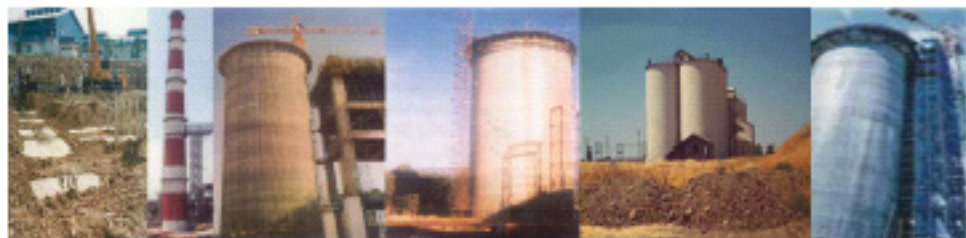
## Brief list of works executed In INDIA



M/s BALLARPUR INDUSTRIES LTD.  
 M/s CENTURY PULP & PAPER MILLS LTD.  
 M/s OSWAL PAPER & ALLIED INDUSTRIES LTD.  
 M/s GUJRAT AMBUJA CEMENTS LTD.  
 M/s JINDAL STEEL & POWER LTD.  
 M/s SHREE CEMENTS LTD.  
 M/s GOEL AGRO INDUSTRIES LTD.  
 M/s IND. AGRO INDUSTRIES LTD.  
 M/s UNITECH LTD.  
 M/s UNITED RICE LAND LTD.  
 M/s S.K. SAMANTA & COMPANY PVT LTD.  
 M/s BALRAMPUR SUGAR MILLS LTD.  
 M/s ACC LTD.  
 M/s SIRSA COOPERATIVE SUGAR MILL LTD  
 M/S GOHANA COOPERATIVE SUGAR MILL LTD  
 M/s BANJARI CEMENTS LTD.  
 M/s DEVI CEMENTS LTD.  
 M/s BHAGIRATHA ENGINEERING LTD.  
 M/s IRCON INTERNATIONAL LTD.  
 M/s PYRAMID CEMENTS LTD.  
 M/S NBCC LTD

PULP STORAGE TOWERS  
 RCC STRAIGHT CHIMNEY  
 RCC TAPER CHIMNEY  
 RCC SILOS  
 RCC TAPER & STRAIGHT CHIMNIES  
 RCC SILOS  
 FOOD GRAIN STORAGE SILOS  
 FOOD GRAIN STORAGE SILOS  
 RCC TAPER CHIMNEY & DIGESTORS  
 RCC COLUMNS BY SLIPFORM  
 RCC SILOS  
 CIVIL WORKS & COLUMNS BY SLIPFORM  
 RCC SILOS  
 RCC CHIMNEY  
 RCC CHIMNEY  
 CIVIL WORKS & RCC SILOS  
 CIVIL WORKS & RCC SILOS  
 CIVIL WORKS & BRIDGE PIERS  
 CIVIL WORKS & BRIDGE PIERS  
 CIVIL WORKS & RCC SILOS  
 220 MTR. RCC CHIMNEY

## ABROAD



M/s LAKHI CEMENT  
 M/s TASEK CEMENT  
 M/s APMC CEMENT  
 M/s TOKYO CEMENTS  
 M/s SHAH CEMENTS  
 M/s INDO BHARAT RAYON

BHUTAN  
 KUALA LUMPUR, MALAYSIA  
 SHAH ALAM, MALAYSIA  
 SRI LANKA  
 BANGLADESH  
 INDONESIA

RCC SILOS  
 CIVIL WORKS & RCC SILOS  
 RCC SILOS  
 CIVIL WORKS & RCC SILOS  
 SALE OF SLIPFORM EQUIP.  
 CIVIL WORKS & RCC CHIMNEY  
 OF 125 Mtr.



Slipform in use of tower building of Indian School of Business, Hyderabad Highest structure found mentioned in most of the architectural magazines - a must to see for every young civil engg.



RCC straight Chimney under construction for Sirsa Co-p. sugar mill, Haryana



Largest dia Fly Ash Silo for Shree Cement, Bawar, Rajasthan



Battery of RCC Silos constructed for Malt India Ltd, Patna, Gurgaon • Reflecting the quantity of slipform equipment & manpower we have

## TECHNICAL PERSONS WITH EXPERIENCE

Mr. S.K. Grever, B.E Civil, FIE India, Member ICE Chartered Engg.  
 Mr. C.R.S Mesar, M.I.E.E.E (Civil)  
 Mr. B.N. Shukla, B.E. (Civil)  
 Mr. A.K. Poddar, B.E. (Civil)  
 Mr. V.K. Gupta, B.E. (Civil)  
 Mr. V.K. Khakya, B.E. (Civil)  
 Mr. P.K. Sani, B.E. (Civil)  
 Mr. C.Rajput, B.E.(Civil)  
 Mr. S.K. Gupta, B.E.(Civil)  
 Mr. P.Vargosa, B.E. (Civil)  
 Mr.Rahman, B.E. (Civil)  
 Mr.Rajender Babu, B.E. (Civil)  
 Mr.A.K.Jain.B.E. (Civil)  
 Mr.A.K.Thakur.B.E. (Civil)  
 Mr.Nimal Chakravarty, B.E. (Civil)  
 Mr.B.S.Chauhan, B.E. (Civil)  
 Mr. S.K.Thwart, Diploma (Civil)

## MAJOR CLIENTS

M/s BALLARPUR INDUSTRIES LTD.  
 M/s CENTURY PULP & PAPER MILLS LTD.  
 M/s OSWAL PAPER & ALLIED INDUSTRIES LTD.  
 M/s GUJRAT AMBUJA CEMENTS LTD.  
 M/s JINDAL STEEL & POWER LTD.  
 M/s SHREE CEMENTS LTD.  
 M/s COEL AGRO INDUSTRIES LTD.  
 M/s IND. AGRO INDUSTRIES LTD.  
 M/s UNITECH LTD.  
 M/s UNITEED RICE LAND LTD.  
 M/s S.K. SAMANTA & COMPANY PVT LTD.  
 M/s BALRAMPUR SUGAR MILLS LTD.  
 M/s ACC LTD.  
 M/s SIRSA COOPERATIVE SUGAR MILL LTD  
 M/s GOHANA COOPERATIVE SUGAR MILL LTD  
 M/s BANJARI CEMENTS LTD.  
 M/s DEVI CEMENTS LTD.  
 M/s BHAGIRATHA ENGINEERING LTD.  
 M/s IRCON INTERNATIONAL LTD.  
 M/s PYRAMID CEMENTS LTD.  
 M/s NIICC LTD  
 M/s LAKSHI CEMENT  
 M/s TASEK CEMENT  
 M/s AFMC CEMENT  
 M/s TOKYO CEMENTS  
 M/s SHAH CEMENTS  
 M/s INDO BHARAT RAYON

## MAJOR CONSULTANTS

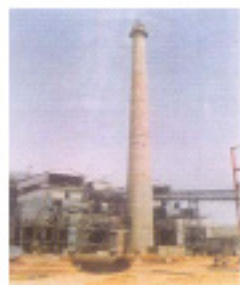
M/s Dassin Consultants Pvt Ltd., Delhi  
 M/s HSBCH Consultants, Gurgaon  
 M/s KL Consultant, Kuala Lumpur, Malaysia  
 M/s Predominant Engineers & Consultants, Gurgaon  
 M/s Degreent Limited, Gurgaon  
 M/s Walchand Nagar Industries Ltd., Pune  
 M/s Thomas Ltd., Delhi  
 M/s Sijon Consultants Ltd., Ahmedabad  
 M/s Engineering Consultants India Ltd., Delhi  
 M/s SEMAC Pvt. Ltd., Delhi  
 M/s Arch Consultants, Delhi  
 M/s Sahgal/Netia & Associates Ltd., Delhi  
 M/s Swaminathan & Associates, Coimbatore  
 M/s SOIL Engineering Consultants, Delhi  
 M/s Sri Consultants, Hyderabad  
 M/s Mecon Ltd., Ranchi  
 M/s MANDHAR Exim World wide Pvt. Ltd., Hyderabad  
 M/s HUMPHREY & GLASSGOW, Delhi  
 M/s Technical Projects Consultants, Delhi  
 M/s Tata Projects Ltd., Hyderabad

## Repeat orders we have received since 1982

Name of Client	1st Order in (Year)	Repeat Orders in (year)
M/s. Sordatt Builders	1985	1992, 1995
M/s. Gannon Dunkerley & Co. Limited	1986	1989, 1990 1992, 1993
M/s. Ballarpur Industries Limited	1987	1990, 1991, 1992
M/s. Sorabh Cements Ltd., Rajasthan	1988	1989
M/s. Charol Cements, Orissa	1989	1995
M/s. Ind. Agro Synergy, Nagpur	1994	1997, 2003
M/s. S. K. Samanta Pvt. Limited Calcutta	1991	1992, 1998, 2002
M/s. Unitech Limited	1992	1994, 1995, 1997, 2001
M/s. Ambuja Cements Ltd.	1994	1998, 2000
M/s. Karam Chand Thapar & Bros. (P.) Ltd.	1999	2000, 2003
M/s. Jindal Steel & Power Ltd.	2001	2003
M/s. J. C. Gupta	2001	2002, 2003



Air traffic control tower at Santa Cruz airport, Mumbai



125 m high RCC Taper Chimney of Indo Bharat Rayon Ltd, Indonesia

### A TRAIL BLAZING JOURNEY OF TECHNOLOGICAL EXCELLENCE FROM SWEDEN TO INDIA

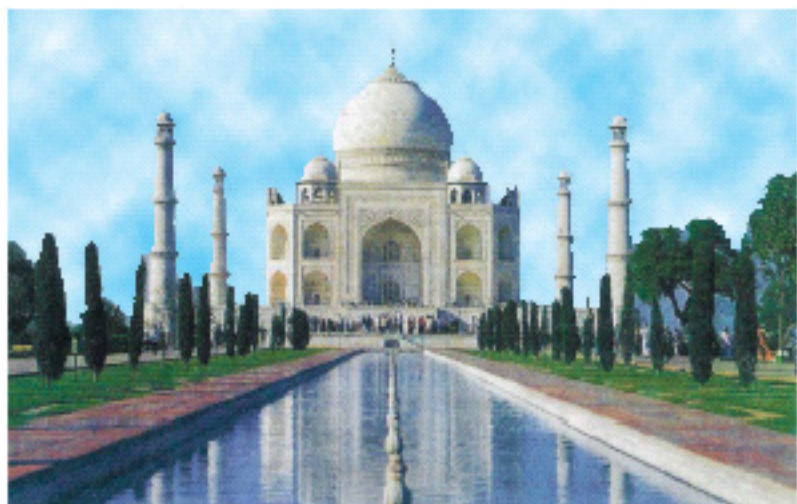


BY S.K. GROVER

About the author : A Bachelor of Civil Engineering from Thapar Institute of Engineering & Technology, Patiala, 1972  
 Fellow Institution of Engineers (India), Member - ICE  
 Chartered Engineer, MD of SLEPCO CONSTRUCTIONS PVT LTD, Delhi  
 Member Governing body - Global Institute of Management & Technology, Delhi.



# TAJ MAHAL



**The Taj Mahal would not have been so beautiful if Shah Jehan had asked for quotations and gone for the lowest**

**REGISTERED OFFICE :** **SLIPCO CONSTRUCTIONS PVT. LTD.**  
332 Southex Plaza - II, Masjid Moth NDSE - II  
New Delhi-110049

**TELEPHONE NOS. :** 26168560 **TELEFAX:**26256461

**EMAIL :** slipco@vsnl.com

**HEAD OFFICE :** U-1, Shanti Kunj, Green Park Extn New Delhi - 110016

**MOBILE NO. :** 9810077525 **TELEFAX:**26171910