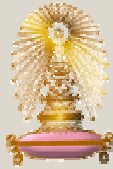


Chulalongkorn University



Junior Research Scholar Program



Dissertation entitled:  
**The Development of  
Public Land Management Policy  
For Under-utilized Space in Bangkok, Thailand**

Ariya 'Narm Aruninta Ph.D Candidate

**Chairman** : Dr Willi Zimmermann **Co-chair** : Dr Edsel Sajor

**Committees** : Dr. Soparth Pongquan, Dr. Banasopit Mekvichai

# Research questions/ Methodology

## Public own under-utilized land questions

- # **What** is the under-utilized spaces, public owned land? Clarification.
- # **Why** do the under-utilized spaces exist in the urbanized area?
- # **Clarification** of types of under-utilized public land and its relationship to the use of the space and location.
- # **Clarification** of organization framework of involved actors.
- # **Why** does it have to be systematic / holistic /integrated approach?
- # **What** are the appropriate public activities assigned on the utilized land concerning integrated approach (social, economic, and environment aspect)?
- # **What** are potential alternatives for utilization?

Literature/observation	Public under-utilized land in BKK
Literature/observation	
Literature/observation	
Literature/interview	Public organizations
Literature/interview	
Interview/questionnaire	
Models evaluation,SWOT	Involved actors
Literature/questionnaire	

# Research questions/ Methodology (cont)

## Policy / decision-making questions

- # What are the directions of plans, policies, in the National, local level related in public land utilization?
- # Clarification of decision-making / policy models
  - Policy problems
  - Policy alternatives
  - Policy implementation
  - Policy outputs
  - Policy outcomes
  - Policy performance
- # Why the PLM policy study is important to urban environmental management?
- # How the PLM policy has been proceeded on each case(organization)?

Literature

Literature

Meeting /interview

Literature/interview

Literature/interview

Public  
organizations/  
Policy  
decision  
makers

Involved  
actors

Involved  
actors

# Research questions/ Methodology (cont)

## Application to case study questions

- # What are the significance indicators of under-utilized space in the case of BKK?
- # Which model(s) is appropriate to the case of Bangkok, Thailand for ;
  - State's land
  - State enterprises' land
- # What would be the attitude, opinion and reaction from the involved actors?
- # How to manage the PLM guideline?
- # How feasible is the PLM guideline?

Literature/observation

Questionnaire

Literature/observation

Public  
organizations/  
Policy  
decision  
makers

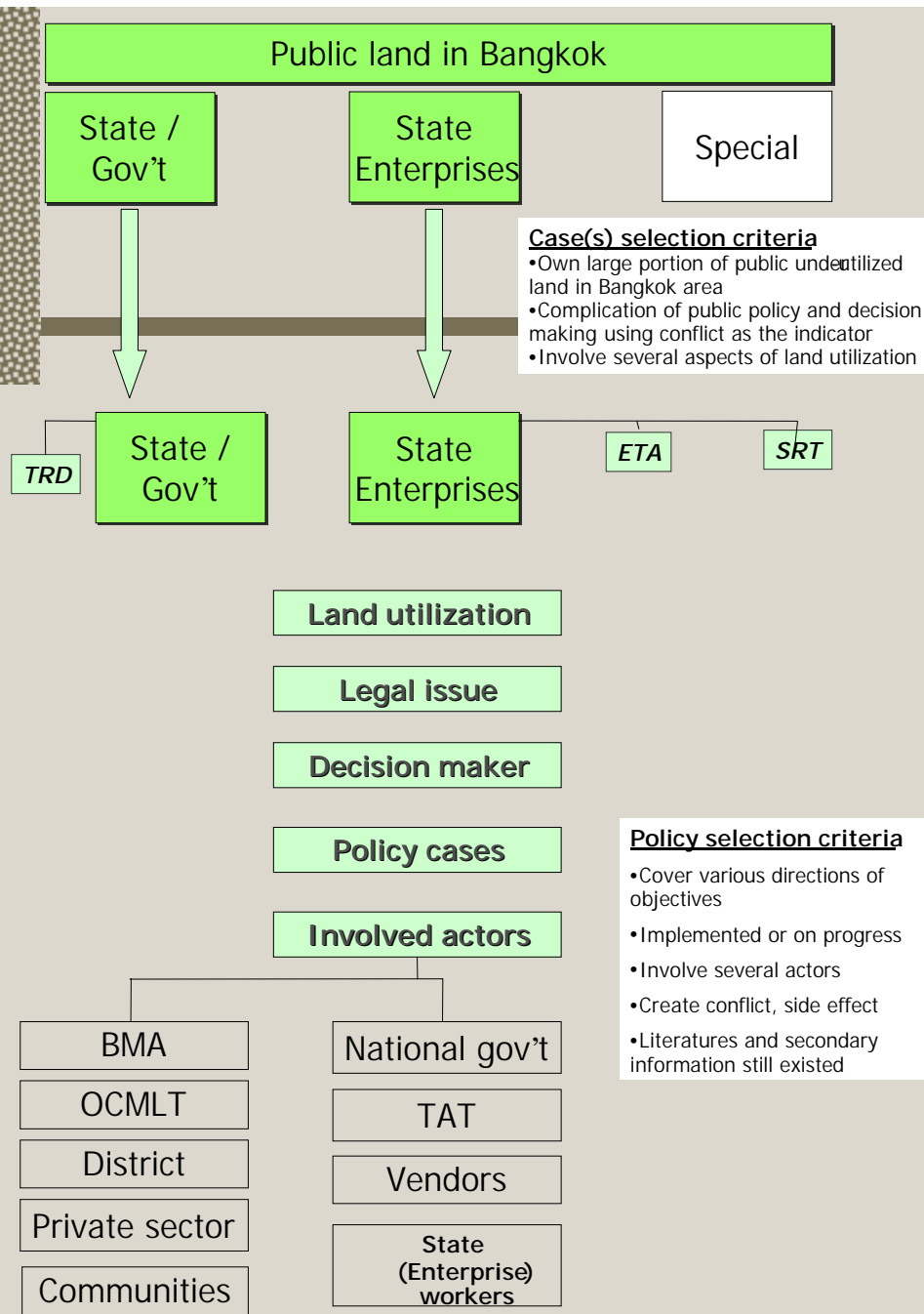
Questionnaire/Interview

Literature

Literature/Expert meeting

Involved  
actors

Experts



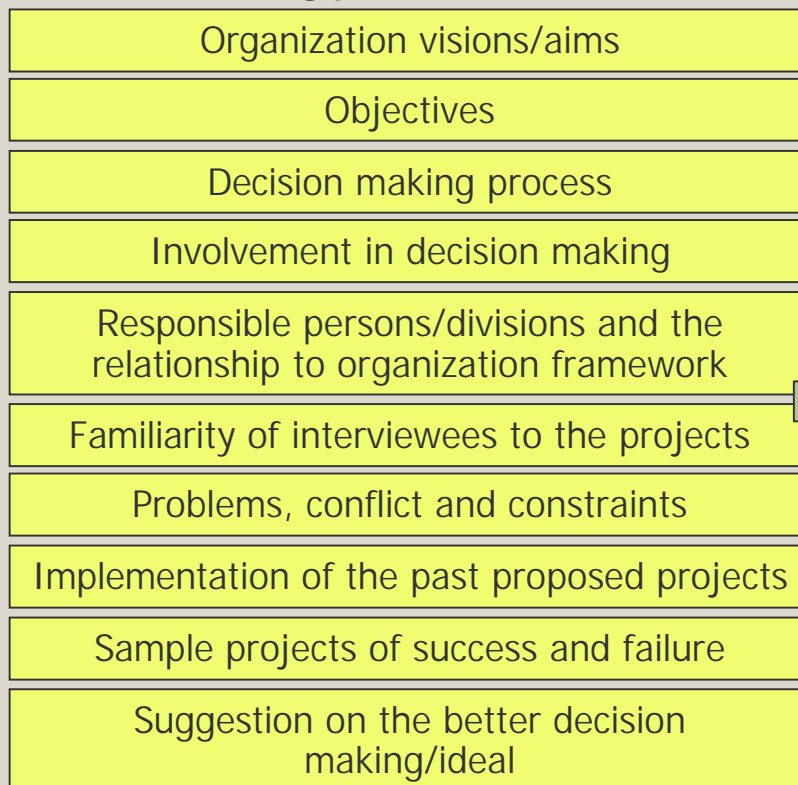
# Methodology

- # Case study selection
- # Literature review
- # Preliminary interview, meeting
- # Policy analysis/ Decision making analysis
- # Propose policy guideline
- # Policy evaluation
  - Questionnaires
  - Expert meeting

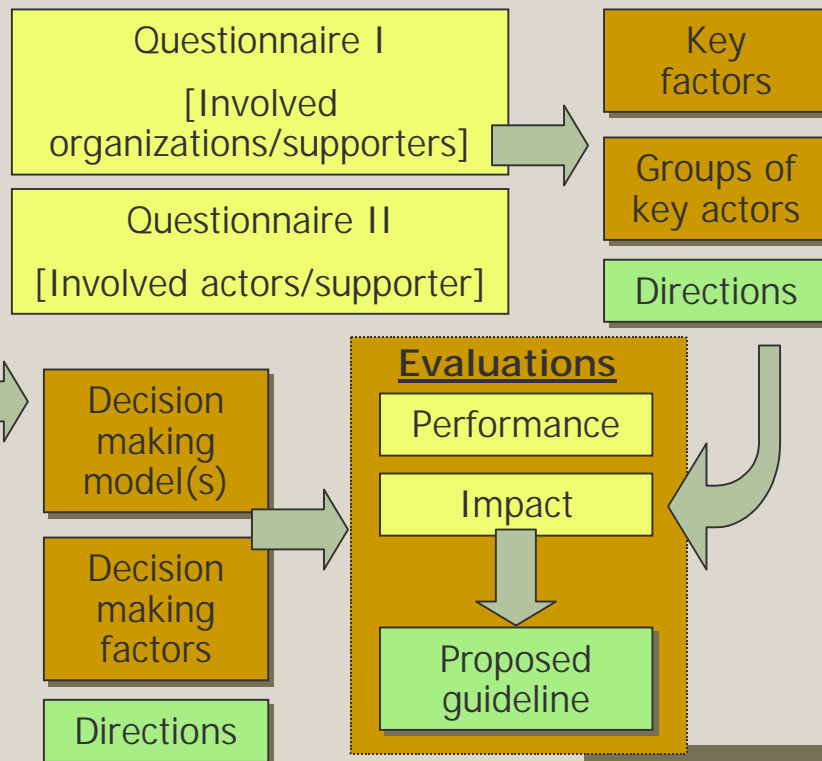
# Methodology/ Data collection plan

- # Literature review, field survey and spatial analysis of the selected plots (cases)
- # In-depth interview
- # Questionnaire for involved actors (officers) – questionnaire 1
- # Questionnaire for supporters (community) – questionnaire 2
- # Expert meeting [Evaluation] : (Decision makers), Policy analysts

## Decision making process



## Attitudes direction of involved actors



# Coordination schema to objectives – for in-depth interview

## # #1. To understand the existing urban land management policy in public agencies.

- **Problem area** - General background, reviewed examples, Decision-making in land management., Public agencies
- **Topic** - Existing related policies on land utilization and management, Decision-making model(s), Involved stakeholders
- **Parameter** - Statement and identification of land utilization management policy, Identification and types of decision-making model(s), Types and characteristic of involved stakeholders.
- **Complex variables** - Specification, categorization of land utilization management policy, Categorization of decision-making model(s), Categorization of involved stakeholders and their conditions.
- **Simple variables** - Policy models : Elitist, Pluralist, Sub-government, Tripartite, Rational-comprehensive, Incremental, Systems models/ Decision-making models : Rational, political, legal- Efficiency/ involvement of governmental agencies, executive officers, committees, interest groups



# Coordination schema to objectives – for in-depth interview

## # #2. To identify and categorize existing public own under-utilized spaces.

- [Literature review and field survey (spatial analysis)]
- Problem area - Land owners, responsible actors of the voids.
- Topic - Involved stakeholders
- Parameter - Types and characteristic of stakeholders and land ownership.
- Complex variables - Categorization of involved stakeholders and their conditions related to ownership, responsibility
- Simple variables - The efficiency/ involvement of governmental agencies, executive officers, committees, interest groups, channels/mechanism of involvements, possible conflicts/constraint



# Coordination schema to objectives – for questionnaires

## # #3. To describe the factors, criteria, and motivation on the use of public space.

- Problem area - Program and usage analysis
- Topic - Activities choices and relationship to requirement and objectives of policy makers, stakeholders
- Parameter - Type of indicator/factor on applying activities on the space
- Complex variables - Categorization of factors/indicator, conditions of the public activities
- Simple variables - Types/ characteristic of the activities (frequency, occasions), preferred/planned programs, levels of usage.

# Coordination schema to objectives – for questionnaires

## # #4. To explore, describe, and evaluate the alternatives of PLM policy and the possibilities of conflicts and constraints by applying to the case of Bangkok.

- **Problem area** - Attitude on alternatives of PLM policy
- **Topic** - Attitudes toward cases/models, Expression and opinion
- **Parameter** - Characteristic of community and their interest/ Income / financial affordability of economic public activities / Expression / Opinion / Motivation/ Attitude/ Preference
- **Complex variables** - Economic benefit assessment of the activities/ Other benefits/ Demographic information of target users, Socio-economic condition of the community, Attitude toward the policies and their preference
- **Simple variables** - Level of accepting, Level of efficiency of the activities (by economic factors); gain/loss/equal- Level of efficiency of the activities (by other factors)- Related demographic information (age, gender, education, occupation, income, hobbies/leisure), Community evaluation (appreciation, income generation, complaint, comments) - Level of accepting

# Coordination schema to objectives – for expert meeting

## # #5. To recommend, formulate, and generalize PLM policy guideline for under-utilized space.

- **Problem area** - Institution / Organization/ Administration feasibility
- **Topic** - Recommended institutional and organization frameworks Involved actors, stakeholders
- **Parameter** - Identification of policy framework, statement of plans and policies/Suggested involved actors, stakeholder/ Participation
- **Complex variables** - Responsibility, Procedure, Allocation, involved actors and participatory, Actors contribution on participation
- **Simple variables** - Information on the existing framework and recommended one (Level/ operation / task / actual actor/ participation / evaluation/ budget/ staffs/ priority, term)/ Condition and Level of benefit, potential, funding , Information on actors (Initiation, man power, finance, material, public relation, monitoring)

# Decision making actors

---

- # Decision makers
- # Involved actors / organizations – potential proposed actors
- # Supporters / people (public) : who have been effected by the policy

# Involved actors vs Policy decision makers

- # **National gov't**
- # **BMA** Green space master plan (Provincial policy)
- # **District** as an operator/implementer
- # **Supporters**; communities, Vendors, State (Enterprise) workers, Private sectors, OCMLT, TAT
- # Treasury Dept (**TRD**)
- # State Railway of Thailand (**SRT**)
- # Expressway and Rapid Transit Authority (**ETA**)

# Major data Collections

---

## # In-depth interview

- 1st Round interview with decision makers
- 2nd Round interview with decision makers

## # Questionnaires

- Questionnaire for involved organizations
- Questionnaire for citizens

# Population data

## # Questionnaire 1 "involved actors"

Involved actors (by organization)

- National gov't (senators, representatives)
- BMA (Provincial policy head divisions) Officers 16,160 (BMA's civil officials 17,263 BMA's Teacher officials 12,899 Permanent Employees 27,732 Temporary Employees 25,056 Total 82,950)
- District as an operator/implementer (district officers, councilors, representatives) BMA Council 60, BMA district representatives 37
- Supporters :
  - OCMLT – policy head division
  - TAT – head division
  - Private sectors – (supporter companies; Unilever)

## # Questionnaire 2 "supporters"

Respondents : Supporters

- Communities
  - Chatujak 32.908Sq Km Male 85,547 Female 82,759 Total population 171,856 72,767 Households
  - Rachatewee 7.126Sq Km Male 45,019 Female 50,745 Total population 103,453 27,126 Households
- Vendors
- State (Enterprise) workers



# Evaluations meeting outline

---

- # The result from data analysis of the questionnaires will form a "proposed policy guideline". It will be brought up to the experts and decision-makers meeting.
- # Members of the expert will be policy analysts in various institutes, and decision-makers will be in the same group as been interviewed.

# Clusters : location

## TRD

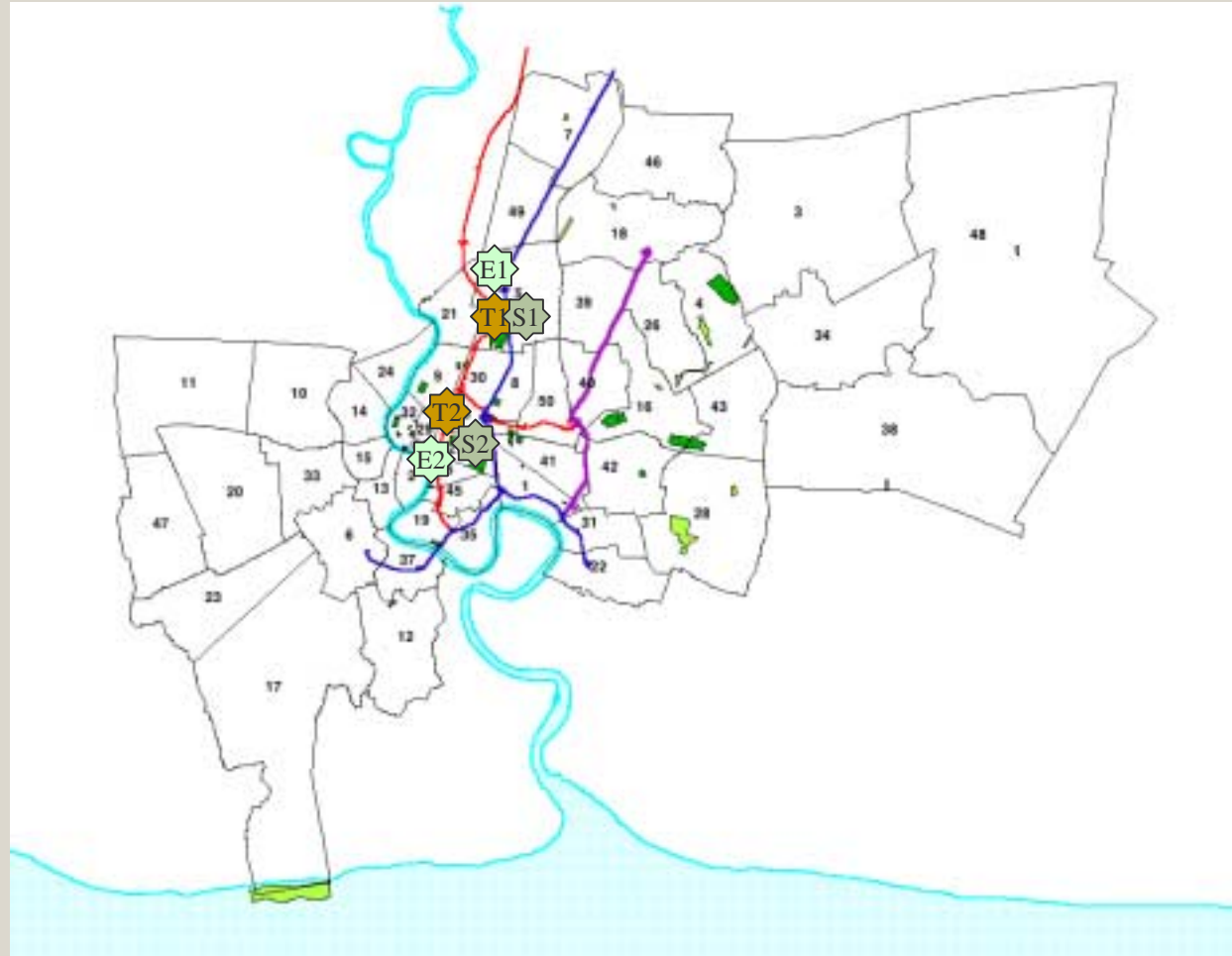
- T1 Morchit (Northern Bound Bus Station)
- T2 Dept of Livestock Development (DLD), Rajchatewee

## SRT

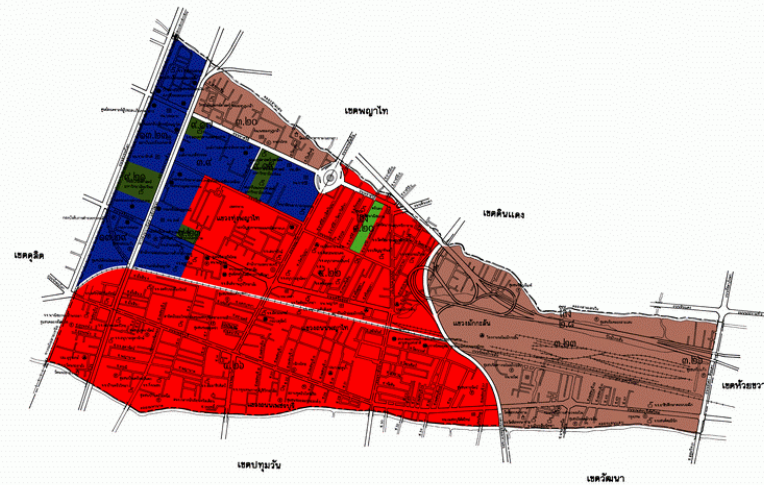
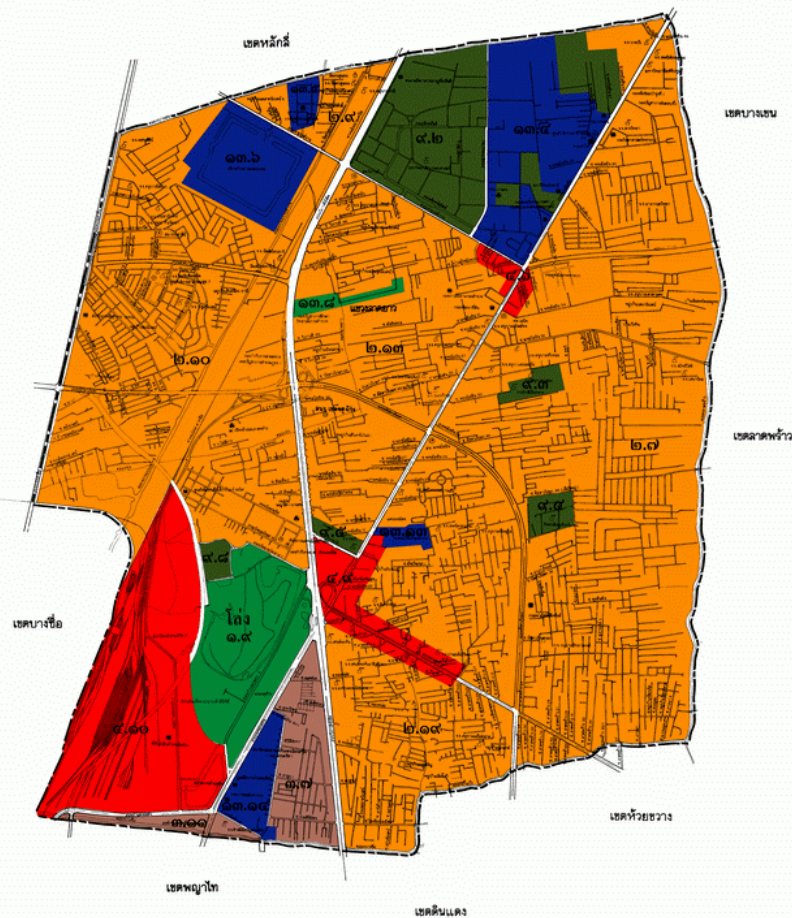
- S1 Railway park / Pahonyotin station area
- S2 Makkasan station

## ETA

- E1 2<sup>nd</sup> stage expressway (Kampangpetch)
- E2 2<sup>nd</sup> Stage expressway (Urupong area)



# Clusters : Land-use



## สีของแผนที่

- |              |  |
|--------------|--|
| ๑. เขตเมือง  | พื้นที่ประเภทที่อยู่อาศัยความหนาแน่นน้อย                   |
| ๒. เขตเมือง  | พื้นที่ประเภทที่อยู่อาศัยความหนาแน่นปานกลาง                |
| ๓. เขตเมือง  | พื้นที่ประเภทที่อยู่อาศัยความหนาแน่นมาก                    |
| ๔. เขตเมือง  | พื้นที่ประเภทพาณิชยกรรม                                    |
| ๕. เขตเมือง  | พื้นที่ประเภทอุตสาหกรรมและคลังสินค้า                       |
| ๖. เขตเมือง  | พื้นที่ประเภทคลังสินค้า                                    |
| ๗. เขตเมือง  | พื้นที่ประเภทอุตสาหกรรมเฉพาะกิจ                            |
| ๘. เขตเมือง  | พื้นที่ประเภทเกษตรกรรมและปศุสัตว์                          |
| ๙. เขตเมือง  | พื้นที่ประเภทการศึกษาทางวิชาการ                            |
| ๑๐. เขตเมือง | พื้นที่ประเภทอนุรักษ์ธรรมชาติและสิ่งแวดล้อม                |
| ๑๑. เขตเมือง | พื้นที่ประเภทอนุรักษ์เพื่อส่งเสริมเอกลักษณ์ศิลปวัฒนธรรมไทย |
| ๑๒. เขตเมือง | พื้นที่ประเภทสถาบันศาสนา                                   |
| ๑๓. เขตเมือง | พื้นที่ประเภทสาธารณูปโภคและสาธารณูปการ                     |

## LEGEND

- |  |
|--|
| Low density residential area                             |
| Medium density residential area                          |
| High density residential area                            |
| Commercial area  |
| Industrial and warehouse area                            |
| Warehouse area   |
| Specific ad hoc industrial area                          |
| Rural and agricultural area                              |
| Academic area  |
| Rural and agricultural reservation area                  |
| Reservation area for Thai identity cultural facilitation |
| Religious institutional area                             |
| Governmental, utility and facility area                  |

# Clusters : characteristic comparison

## Cluster 1-Chatuchak

1. Overall land-use : medium density residential zone, parks, transportation hub, government offices
2. TRD (T1) plot – Plan for Bangkok terminal Project
3. SRT (S1) plot – Convention complex
4. ETA (E1) plot – Utilized as overflow bus station facilities

## Cluster 2-Rachatewee

1. Overall land-use : High density residential area with commercial use, railway tracks and factory, government offices
2. TRD (T2) plot – non proceed plan for Dept of Livestock Dev relocation project
3. SRT (S2) plot – Commercial complex
4. ETA (E2) plot – Occupied by street vendors and vacant spaces



# Cluster 1

## Chatuchak District

- |    |   |
|----|---|
| T1 | Morchit (Northern Bound Bus Station)            |
| S1 | Railway park / Pahonyotin station area          |
| E1 | 2 <sup>nd</sup> stage expressway (Kampangpetch) |

# T1 Morchit (Northern Bound Bus Station)



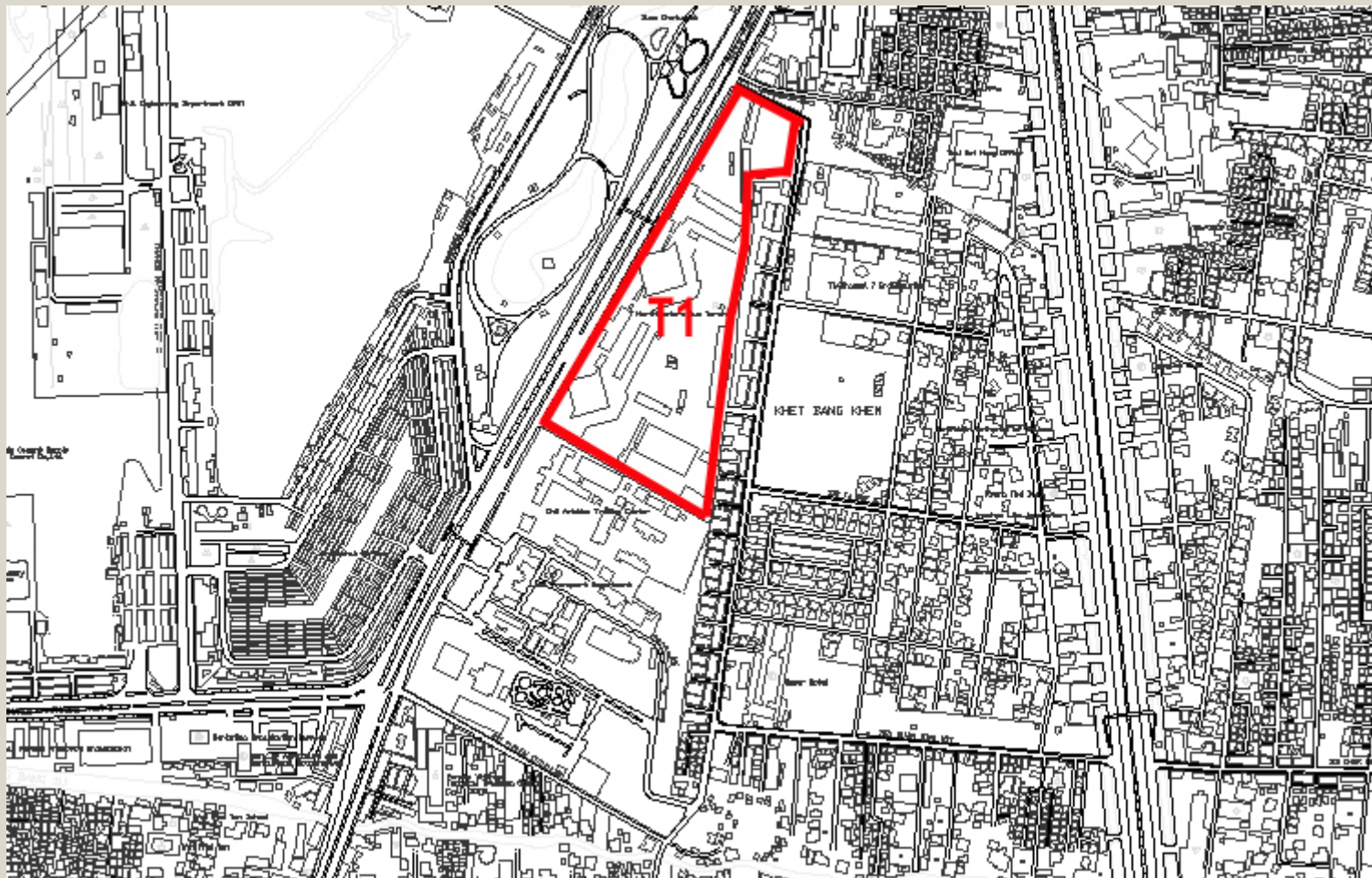
[Panoramic view]-360 degree]

[Panoramic bird eyes view]

Site character

- Un-built transportation terminal project
- Surrounded by parks, commercial(holiday market) and residential area
- Temporary park'n'ride for BTS

# T1-Map / location





# S1 Railway park / Pahonyotin station area



## [Panoramic view]

### Site character

- Un-built conference center project (Eyes to the Future)
- Surrounded by parks, and residential area
- Existing : Railway Engineering School

# S1 – Map/location





# S1-the un-built development plan



# E1 2nd stage expressway (Kampangpetch)



[Panoramic view-360 degree]

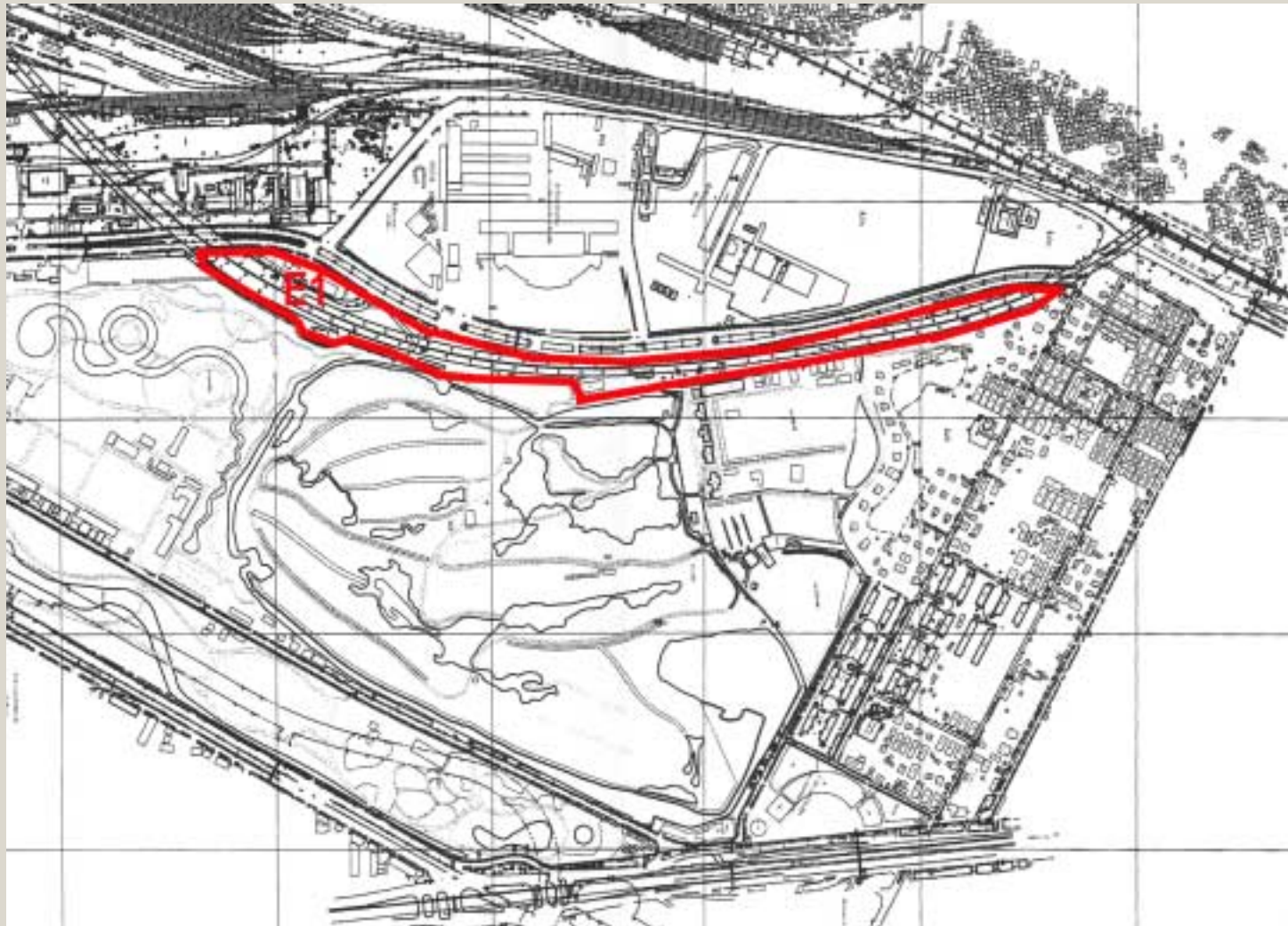
[Panoramic view]

Site character

- Vacant and short-term rental space
- Surrounded by parks, Bus terminal and residential area
- Temporary facilities for Bus station



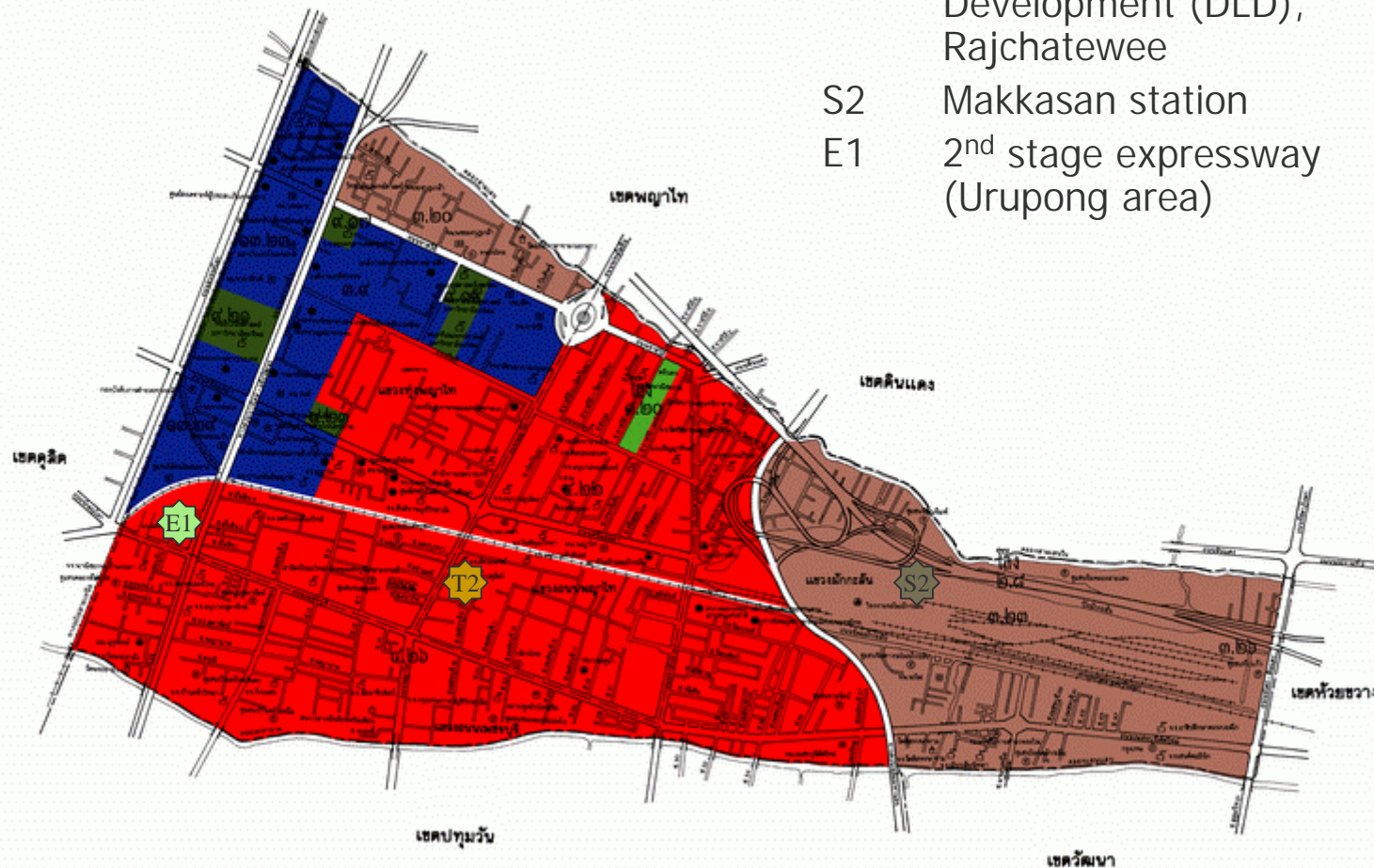
# E1 – Map / location



# Cluster 2

## Rachatewee District

- T2 Dept of Livestock Development (DLD), Rajchatewee
- S2 Makkasan station
- E1 2<sup>nd</sup> stage expressway (Urupong area)





# T2 Dept of Livestock Development



## Site character

- Dept of Livestock Development office with unbuilt land trading proposal with private developer
- Surrounded by commercial and high density residential area





## S2 Makkasan station area

---

[Aerial view]

Site character

- Un-built commercial complex development project
- Surrounded by commercial and high density residential area, Railway tracks
- Existing : old SRT factory