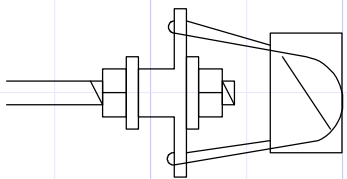
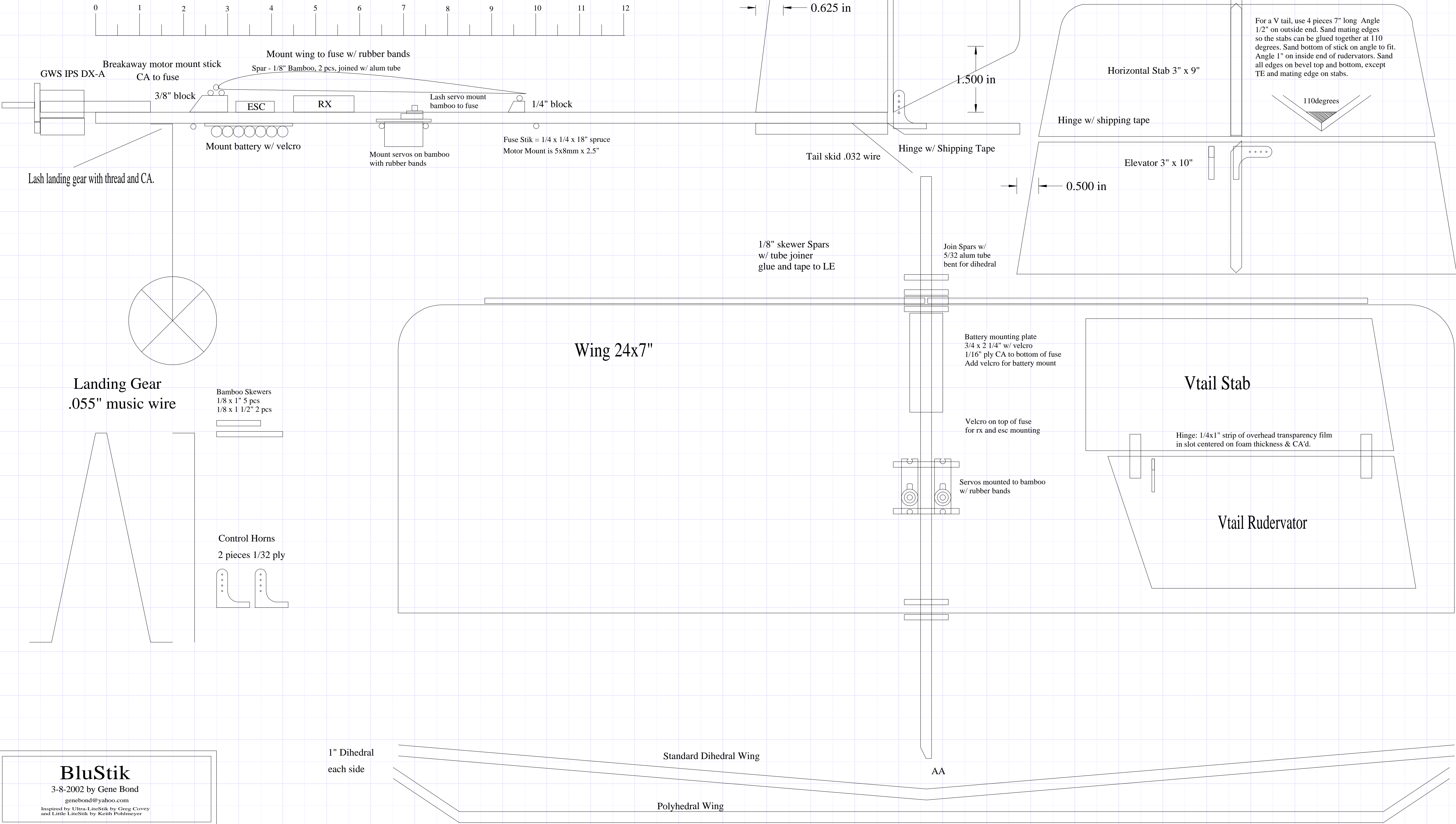
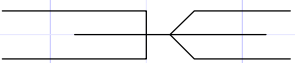


The Ezone Prop Saver
Cut the arms from a GWS servo 2 arm horn on the middle hole. Drill center out with a #33 drill. Thread on shaft: nut, washer, servo horn, washer, nut. Put first nut all the way to end of threads. Cut off end of threaded shaft. Put prop on nut and take small rubber band from one horn, around hub to other horn, around other side of hub to first horn.



For hinges, either use shipping tape, or cut a 1/4 x 1" strip of overhead transparency film. Plunge #11 exacto into center of surface on fixed and moveble surface. Glue with a drop of odorless-foam-safe CA each side. Use 2 per rudder or elevator.



BluStik

3-8-2002 by Gene Bond
genebond@yahoo.com

Inspired by Ultra-LiteStik by Greg Covey
and Little LiteStik by Keith Pohlmeier