

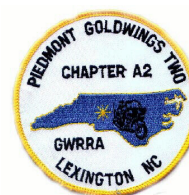


GWRRA

Region "N"

NC

A-2



Piedmont Goldwings Two

"Lexington Style"

March 2006

# "GOLD NOTES"

## Chapter A-2 Staff

**Chapter Directors:**  
Steve & Robin Deane  
336-998-0863

**Assistant Director,  
Chapter Educator  
and Web Master:**  
Randy Dezarn

**Treasurers:**  
Gary & Debbie  
Everhart

**Ride Coordinators:**  
AC & Edna Pennington

**Membership Recruiting  
and Retention:**  
**Open Position**

**Sunshine Lady**  
Cathy Beck

**Technical Advisor:**  
Tim Pennington

**Special Events  
Coordinator:**  
Ruby Pennington

**Phone Tree Contacts:**  
Bernie Motley  
336-764-5321

**Newsletter Editor:**  
Betty Dye 336-787-4700

**Assistant Newsletter  
Editor:**  
Bernie Motley

**Chapter Couple**  
**Open Position**

<http://www.geocities.com/gwrranca2/>

**Design Contest** – Get out your pencils and paper and start doodling. It's the annual Wings Over the Smokies Design Contest with a deadline of April 15<sup>th</sup>. If you win you'll get the first two registrations to the rally as well as recognition, and a \$100 award. Remember... you don't have to be an artist to submit a design. The design can be up to six colors and must include "Wings Over the Smokies" and a Gold Wing motorcycle image. A rough drawing will do with enough illustration to carry through your concept. Send your drawing to Willie and Judy Hunt by April 15<sup>th</sup>. Visit the NC District website for full details.

**Plaque Changes** – There is a change in the way the East, West, and Central plaques will be awarded. Each chapter wishing to capture a plaque must have a minimum of four card-carrying GWRRA members present.

Each person from a visiting chapter then has a ticket placed in the pot, and the chapter whose ticket is drawn captures the plaque. This rule change rewards participation and gives us a better chance of capturing the Central Traveler plaque when it comes to a chapter nearby.

**We Got It!** - The benefit of capturing a plaque was made clear at the Operations Meeting on February 11<sup>th</sup>. The chapter who captured the plaque most often received the 2005 plaque (Albemarle NC-T2 in 2005). Also, every chapter that captured the plaque in 2005 had its name in the pot equal to the number of times it captured the plaque. NC-A2 captured the Central plaque two times, so NC-A2 had two chances to receive \$100. It only took one ticket, and it was ours! We brought home a check for \$100 to be deposited in our chapter's treasury.

**Upcoming Events** – We have events planned through June but will have another planning meeting on Saturday, April 8<sup>th</sup> at 1:30 p.m. at Venezia in Advance. We'll plan activities through December, so start thinking about places you'd like to go and things you'd like to do. We have lots of fun activities already planned, and we'll get more in the pipeline.



**Motorcycle Awareness Division (MAD)** – GWRRA Motorcycle Awareness Division and has now brought this division to district and chapter level. The MAD coordinator at chapter level will be an outreach person who is a liaison to the public—community organizations, churches, civic and social groups to help make them more aware of motorcyclists and how we can each share the road safely. This position also works with the Rider Education Officer to raise awareness among motorcyclists about traffic hazards. Steve has volunteered to serve as the MAD coordinator for NC-A2, but he will need others to serve as liaison. More information will be available soon

**Help Wanted** – Our Recruitment and Retention (R&R) Coordinator is an important person in chapter operations. The R&R Coordinator keeps us on track for membership renewals and information that district, region, and national maintains. Pat Simmons has graciously served as R&R Coordinator for the past year and recently relinquished these duties, and we appreciate her efforts. Please contact us to learn how you can assist in this important staff position.

Till we ride together again.....Robin and Steve



## ACD CORNER



I've been watching the Olympics this week. The one thing that has amazed me is all the hype that's been given to our athletes and when the time comes it seems they hardly make an effort to compete. But I have become a huge fan of one event – Curling! It's a simple game with lots of strategy. And the players are so polite! You rarely see an official. They players govern themselves. There's no trash talking or taunting your opponent. A refreshing change in the world of sports.

So, what does Olympic Curling and motorcycles have in common? Not much. Both are enjoyed by a small percentage of the population. Both are a pastime that folks around the world participate in. Watching how the teams interact on the playing surface (called a sheet, by the way) reminds me of how our different chapters interact at any chapter meeting.

Here's hoping Summer will get here quick!

-Randy

### Rider

### Flat Tire Tips

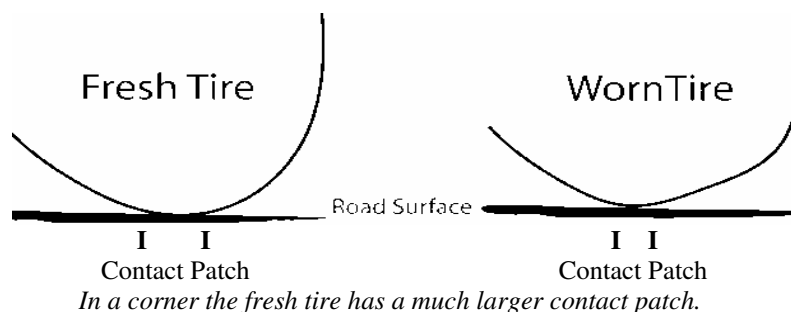
### Education

Motorcycle tires rarely blow with a bang. But, any sudden air loss while riding the bike is a scary thought. Here are some useful steps in the event of a tire blowout. With some luck you will decrease the risk of damage to your bike while minimizing the risk of danger to yourself and others.

1. Front tire air loss is particularly dangerous because it will make your motorcycle difficult to steer. Shift your weight as far back as possible when the front tire loses air pressure.
2. Expect the back of the motorcycle to lurch from side to side if the rear tire starts to go flat. Stay seated as you are.
3. Hold the hand grips tightly and concentrate on steering. Maintain as straight a course as possible.
4. Gradually apply the brake on the tire that is not flat (provided you're sure which one that is). Wait until the motorcycle slows way down, then edge toward the side of the road and stop.

**Do you know your tires age?** Be careful not to buy tires which are over six or seven years old. You will be able to know their date of manufacturing by searching for the three or four-digit number stamped in the tire's sidewall. For instance, 2101 stands for 21<sup>st</sup> week of 2001 – which is its manufacturing date.

**Why are new tires better?** Tires are organic and will decompose. The older a tire gets the more it is exposed to outgassing. This will make the tire brittle.



**When should the tires be replaced?** It depends. Tires may be shot even when there is still ample rubber. They may still look good after going through a considerable number of heat cycles. If the tires are obviously worn or are cupped or scalloped, it is time to replace them.

**What else can you do?** Here are some things you can do to ensure proper tire care:

- Check your tire pressure religiously. Inspect your tires before you ride.
- Buy your tires at a reputable motorcycle store. You can order on-line but it will not guarantee that you will be getting a newly manufactured tire. Buying in person gives you the opportunity to choose the freshest tire in the store now that you know how to check its date. Plus, you can compare prices and quality.
- Avoid riding on the shoulder or near medians, where sharp objects tend to end up.
- Dodge those potholes.

Ride Safe! Randy

## Tim's Tech Tips

Anytime I tackle a project on my Wing, I like to gather as much info as I can! Right now I am in the process of replacing the light bulbs in my GL1500's radio. While I've got the radio out, I will also install a Hard Wired FM Modulator to play a MP3 Player through the radio. The GWRRA and goldwingfacts.com message boards, both were helpful for me on these projects. Stu Oltman, the former technical editor for Wing World, offers advice occasionally on the GWRRA message boards. If you have access to the Web, make use of these tools, you can never have too much information.

<http://bbs.gwrro.org/scripts/board/discus.pl>



\*\*\*\*\*



## REGION "N" Chapter Challenge

Hi folks,

[www.region-n.org](http://www.region-n.org)

I want to further explain how the Chapter Challenge works. Please pass this on to your Chapters so they will in turn see how it works. The idea came up to have a Chapter Challenge at the Region N Rally to help increase participation in the Rally, to award a Chapter and give them the honor of being named Region N Chapter of the Year.

The events that will count to the challenge will be listed in the program book at the Rally. We have already listed most of them in the last few newsletters. Each participant receives one point for specific events that they participate in while at the rally. Those points are received for the following:

Pre-Registration	Scavenger Hunt	Attending a Seminar	Bike Parade
Poker Run	Best Dressed Contest	Bike Show	Hillbilly Horseshoes

A point system is attached to the activities, and a tally system that reaches an average score per Chapter Participant is achieved. This allows small Chapters to have an even chance of winning, allowing all to participate in this.

Upon winning the challenge, the Chapter receives a trophy to display for the term of one year, a plaque to permanently display, listing of their events and a link to their Chapter Web site on the Region N Web site and the opportunity to submit an article for the Region N Newsletter.

If you have any questions as to the benefit of this, just ask NC-E2 the current Chapter of the Year!

Mike Mitchell  
GWRRA Region N Director



## **My Summer Vacation 2005**

### **Trip to Atlantic Provinces**

On my faithful GL1800 Traveler I left Advance, NC at 0500 hrs. Met with Randy Joyce near Chambersburg, Pa. in the early afternoon. Randy had been at Honda Homecoming.  
We traveled on up I-81 and I-84 to Orange County NY est 585 mi. So ended Saturday July 30.

#### **Sunday July 31.**

Departed Orange County NY traveling thru Connecticut, Massachusetts, New Hampshire and Maine to the Canadian Border at St. Stephen NB. Good weather sunny 75 to 80 degree day. We traveled 579 miles.

#### **Monday August 1.**

Departed early AM cloudy with rain temp 50 ( TC-2 to Amherst Nova Scotia. The rain had and found a small recommended place to eat miles traveled. Hazards noted were lane tracks water. These are to be respected.



degrees. Traveled NB-1 to Trans Canada route 2 stopped and we checked the town out on foot and it was very good. 55 degree day and 229 were dished by heavy trucks and would hold

#### **Tuesday August 2.**

Depart Amherst via TC-2 to Moncton then TC-day, 271 miles traveled. Camped at Cabot Trail problem good camping equipment. Dinner at a

104 To Baddeck NS. Sunny travel 64 degree Campground. Light rain in the evening but no downtown so so eatery with a nice view.

#### **Wed. August 3.**

Rode the Cabot Trail a National park of Canada, Sun and clouds but a snap shot trip for sure. Temps up to 60 degrees 320 miles traveled. Dinner this night across the street from the one the night before. Hit it right it was just right.

#### **Thurs. August 4.**

Departed Baddeck NS Back down TC-104 to TC-16 to the ferry to Prince Edward Island. This was a new deal for Randy and Me as we had never traveled the ferry before. When we arrived on the ferry we were instructed to park on side stand and were given a very large cargo strap to secure the bikes with trailer to prevent them from moving forward. Looked strange but they were ok. Upon landing we traveled west on Prince Edward Island ( PEI ).

This island is like the USA in the 50's and 60's. Drinks and all were in glass bottles, plastic on the island.. We were told bottle washing kept people employed. Camped at Moonshine Camp Ground, Mont Carmel, PEI. Sunny windy 64 degree day, 249 miles traveled.

#### **Friday, August 5.**

Toured west end of PEI, best part was the wind mill power generation site on the NW end of PEI. The island produces 25% of their electrical power by wind generation. Returned to Good Ole Moon Shine CG. for the night, laundry and bike wash was the order of the evening.. 173 miles traveled in sun and wind max temp 69 degrees.

#### **Saturday August 6.**

Departed Mont Carmel back into New Brunswick via the Federation Bridge. \$14 dollar ride off the island. Well that was better that the \$ 58 dollars it would have been to have left on the ferry. ( they only charge to leave the island ). We turned north up the east coast of NB toward Que'bec province. we stopped for the night in Marie Helena camp ground in Bathurst, NB. Randy got a bit upset that the men and women shared the same bath house!

However he got over it and most of the women didn't look that bad. No problems were noted.

Hum, all of a sudden everything is French. We were invited to the beach for a bond fire and it was a nice one in deed. All were very interested in where we were from and where we were going..  
Miles traveled 306 very windy sunny high of 75 Degrees.

#### **Sunday, August 7.**

Left Bathurst traveling into Quebec and up to the St Lawrence Seaway, it was as far North as we got, about 4100 miles so far at Mon Joli. We then turned South toward Maine, crossing the border at Fort Kent. We guessed that the border guard did not have much to do as he checked us good.. Guess we looked like bad guys. Fort Kent is where US hwy 1 starts so now we have been on each end, as I was in Key West in May and mile marker zero. We traveled down US-1 to Presque Isle, Maine for the night in a very hilly camp ground. Miles traveled 399, sunny temp 75 degrees.

(Bills Trip Continued)



### **Monday, August 8, My Birthday.**

Departed Presque Isle, changed money back to Green Backs and traveled South on US-1 to the Maine coast and Acadia National Park. Got my Golden Age pass this day as its my 62 birthday.. Schoodic point is not to be missed as it is made up of white and black rock and water, no sand. Randy kept looking for sand and I told him they had to import it.. We camped for the night at East Sullivan, Maine at Mountain View campground. Miles traveled 253 miles high temp 88 and sunny. Lobster and blueberry pie for birthday dinner.

### **Tuesday, August 9.**

Toured the rest of Acadia National Park and Bar Harbor. Returned to the campground and went out for dinner and had a 3 lb lobster, yum yum. Tour miles 191, sunny temp 78 degrees.

### **Wednesday, August 10.**

Traveled on south stopping at the original Fort Knox in Maine. From Fort Knox we moved into Connecticut. we stopped for the night at Moose Meadow campground. Nice place looked like a place to send kids for the summer. 372 miles traveled sunny and temp 93 degrees.

### **Thursday August 11.**

Left early moving south to meet up with Bob, Dian, & Chad in York Pa. This was not to be as I crashed on I-81 outside Jonestown, Pa. Bike was hauled into Lebanon Valley Honda for repair and me to the Red Carpet in for the night. Sunny hot temp 98 degrees.. Bad day but not too bad as I am still here..

### **Friday, August 12.**

Spent Most of day at Honda dealer. He pulled a new 2005 Wing up and pulled the parts off to get me home.. After working with the Progressive we were riding Traveler in less that 22 hrs after the crash. Went to Hershey Theme park that night as I wanted to ride some before starting for home the next day.. Good time had by all and bike was fine. 52 miles 98 degrees and sunny for the day.

### **Saturday, August 13.**

Tough Old Coot gets on bike and sets out with other for Dixie. 428 miles and lots of Drinks as the temp was over 100 degrees. Thanks for VERY good friends and the Grace of My God I am home and ready to ride again. Do it again you ask? Yup.

Total miles over **5100..**

Aloha, Bill...



## **WILL TRAVEL FOR FOOD AND FUN**

**EVERY FRIDAY NIGHT** GWRRA CHAPTER A2 MEETS AT CHARS IN LEXINGTON TO RIDE SOMEWHERE FOR FELLOWSHIP AND FOOD.

RECENTLY WE HAVE BEEN TO THE COUNTRY KITCHEN, ZEKO'S , THE GOLDEN CORRAL AND THE CLASSIC

WE ALSO SELL RIDE TICKETS (\$1.00) EACH WEEK, AND YOU MAY BE THE WINNER AT OUR NEXT MEETING.



**WE AVERAGE ABOUT 20 RIDERS, AND EVERYONE IS WELCOME**

( IN COLD WEATHER SOME OF US ARE JUST "CHICKEN" AND GO IN CARS)

SO JOIN US , WE LEAVE AT **6:45 PM** FROM CHARS.

**We Would like to THANK our Ride Coordinator & Road Captain: MR. AC Pennington for a Job –WELL DONE**

## **THERE WAS A CHAPTER TRIP TO GARDEN CITY S.C. IN FEBRUARY.**

Eight people went on this trip and had a GREAT Time, Thanks to Ruby Pennington, ( Special Events Coordinator) .

She Worked Very Hard to Ensure That All had a Great Time and a Lovely Home to stay in .

Lots of FUN and FELLOWSHIP were had by everyone . ( UNO Games can last a long time)

Ruby has Several Trips planned for this year , But would like to hear suggestions from you.

**ALL** Chapter members are invited to participate and the More the Merrier ,

SO Make plans to Join in on these trips and **RIDE for FUN and FELLOWSHIP.**



### **CHAPTER SUCCESS**

(From Linda McFarland, Ohio Chapter K2)

Are you an active member, the kind that would be missed?  
Or are you just content that your name is on the list?

Do you attend the meetings and mingle with the flock?  
Or do you meet in private and criticize and knock?

Do you take an active part to help the work along?  
Or are you satisfied to be the kind who just belongs?

Do you work on committees, to this there is no trick  
Or leave the work to just a few and talk about "the clique"?

So come to meetings often and help with hands and heart.  
Don't just be a member, but take an active part.

Think this over, members, you know what's right and wrong.  
Are you an active member, or do you just belong ?

### **Motorcyclist's Prayer**

May your tires tread on pavement ... and  
May your fairing cut the breeze.  
May your headlight keep on shinin' ... and  
May your bike avoid all trees.  
May you ride forever safely, both in sunshine and in showers,  
May you ride forever freely and enjoy this land of ours!

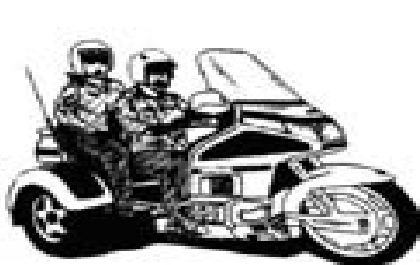




**Dublin & Associates Insurance**  
 (336) 238 - 2052   
 109 Young Drive Linda & Don Dublin  
 Lexington, NC 27292 Home (336) 249-3544  
 Fax (336) 249-6520  
  
**MOTORCYCLE SPECIALIST**  
 Call For a Quote

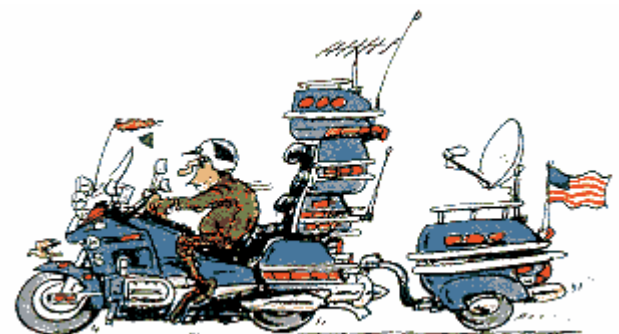
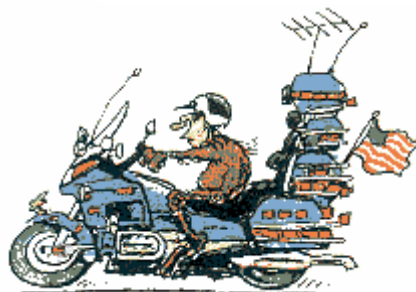
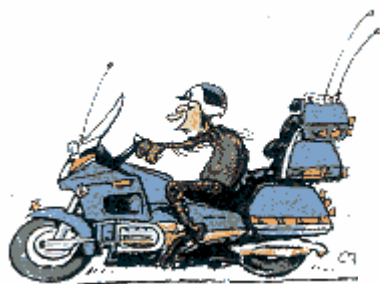
**Cap'n Stevens Seafood Restaurant**  
 Hwy. 150 & Friendship Church Road  
    
 Lexington, NC  (336) 731- 8470

# RIDE CALENDAR



**Blue Ridge Parkway Warning:** Park Rangers are watching for speeders on the parkway. You could get a \$500 fine  
 Slow down and enjoy the ride

<i><b>Date</b></i>	<i><b>Destination</b></i>	<i><b>Departure Time</b></i>
Mar 17	Dinner Ride - Char's	Char @ 6:45
Mar 25	Chapter Y2 Kickoff Meeting	LSB @ 11:00
Mar 26	Chapter G Mall Show	Oak Hollow Mall
Apr 1	April Fool Ride	LSB @ 10:00
Apr 8	A2 Planning Meeting	Venezia's in Advance @ 1:30
Apr 21	Diner Ride - Fire Mtn	Chars @ 6:45
Apr 22	Old School Fresh House	LSB @ 1:00
Apr 23	NC E-2 Poker Run Elizabeth City	TBA
May 7	Curley's Wall Ride	TBA
May 19	Dinner Ride - Fat Boy's	Chars @ 6:45
May 28	Matthew's Ride for the Children	Registration 10:30 AM – 12:30 PM Lexington Belks Lot
June 3	A2 Care Bear Ride	TBA
June 16	Dinner Ride - Battlebranch	Char's @ 6:45
June 17	Big Daddy Feast	TBA
	More Rides To Come !!	





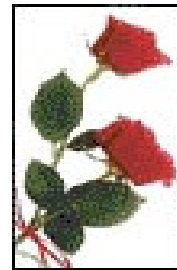


## REMEMBER THE SICK

### Tim Beck's Mother

\*\*\*\*\*

Also Remember Lawrence Paysour :  
Chapter L –Gastonia



He was scheduled to have a kidney removed in February and that got postponed due to Lawrence having shortness of breath .If you would like to send Lawrence a card, His address is :

Lawrence Paysour:  
3403 Merry Oak Lane  
Dallas,NC 28034

## HAPPY BIRTHDAY



Edna Pennington	March 13
Steve Deane	March 21
Amanda Templeton	March 29



### Wedding Anniversaries

Marshall Lanning March 29

### GWRRA ANNIVERSARIES

Junior	Freedle	March 1983	Life Members
Norma	Freedle	March 1983	Life Members
Tim	Pennington	March 1987	Life Member
Guy	Hanes	March 1990	
Tim	Beck	March 2003	
Cathy	Beck	March 2003	
Cara	Beck	March 2003	
Gerry	Grotberg	March 2003	
Peggy	Grotberg	March 2003	
Travis	Templeton	March 2004	
Amanda	Templeton	March 2004	
Joe	Higgins	May 2001	
Sue	Stalter	May 2004	
Dottie	Wilkes	May 2005	

### UP COMING GWRRA RENEWALS

Tim Beck	April 2006
Cathy Beck	April 2006
Cara Beck	April 2006
Dottie Wilkes	May 2006

## Welcome To Our New Members

Chapter A2 would like to say a Special Welcome to Our Newest Members : **Jim and Pam Loveless**

## Chapter Meeting Changes

NC-L2, Denver, will **CHANGE** their **meeting DATE, TIME, & LOCATION** beginning in March to the 2<sup>nd</sup> Saturday, 10am, at Ryan's Steakhouse, 357 N. Generals Blvd in Lincolnton.

NC-Q2, Dunn/Benson, will **CHANGE** their **meeting DATE** to the 2<sup>nd</sup> Sunday beginning in March. Same place and time.

NC-Y2, Monroe, will have their **Kick-off Meeting** on March 25<sup>th</sup> at the Golden Corral, 2507 W. Roosevelt Blvd. Eat at 1pm, meet at 2pm

NC-E, Cary, will **CHANGE** their meeting **LOCATION** to The Original Italian Pie, 800 W. Williams Street #176 (Hwy 55), Apex beginning in March. Same day and time.

“ Wear your GREEN on March 17 ”





# A2 Chapter Meeting Change



Chapter A2 will move their Meeting Date from the First Tuesday to the Third Saturday for the month of JULY due to Wing Ding . The date will be **JULY 15<sup>th</sup>** , Eat 6:30 PM Meet 7:30PM Capt'n Stevens Seafood Restaurant ,Hwy 150 & Friendship Church Rd. Lexington, NC

## From NATIONAL A Word About Friends

Many years ago, GWRRR was founded based on several principles. We were founded because Honda brought out a new model bike. We were founded because some folks wanted to know more about the "workings" of this new bike. We were founded because Gold Wing owners wanted to meet and ride with others that had bought this new Honda Gold Wing. So we began by looking for friends so we could determine who and what we were. That was almost 30 years ago, and there were seven members at that time. Today, we exceed eighty two thousand Members.

We grew from that original seven for a lot of reasons. We grew because the motorcycle was to become the premier touring machine in the country. We grew because more and more people purchased the bike and wanted to know more about it. We grew because we wanted to meet and become friends with the greatest people in the world, Gold Wingers. And, as Walter Cronkite used to say, "That's the way it was."

GWRRR is the largest single-marquee motorcycle association in the world. We became that because we changed the perceptions of who we are and what constituted a touring motorcyclist. I ask you to think back to when you joined GWRRR. Why did you join? What was it that brought you into GWRRR? After your first visit, what brought you back to the Chapter? Why did you stay a Member? Did you join to meet other Gold Wing riders? Did you join to make friends?

A lot of us joined because "You meet the nicest people on a Honda." Whatever the reason you joined, share that with potential new Members. Our Friends are why we came. Our Friends are why we stay. Be a Friend by bringing in new Members and making new Friends for you and for our other Members. You can never have too many Friends.  
Warm Regards

Don Brock  
Executive Director, GWRRR



## HOW TO BE SEEN :

- ◆ **Bright Colors**—Wear brightly colored upper-torso clothing and light-colored helmet. Use retroreflective material on your clothing, your motorcycle and your helmet to increase your visibility in low-light conditions.
- ◆ **Headlights**—Ride with your headlight on high beam during the daytime. You might consider a modulator that pulses your headlight during daylight hours. Headlight modulators are federally regulated lighting devices and as such, all state laws governing them are pre-empted.
- ◆ **Position Lamps**—Many modern motorcycles are equipped with position lamps in their front turn signals. This may help other motorists to identify the vehicle as a motorcycle and enable them to better judge its distance and speed.



## "Motorcyclists Are Dying to be Seen"

- ◆ **Turn Signals**—Communicate with other road users by signaling your intentions. Combine hand with electric signals whenever possible and legal. Remember to cancel your turn signals. A false signal is as dangerous as none at all.
- ◆ **Brake Light**—A flashing light is more visible than a steady one. Use your brake light before and during stops to make yourself more conspicuous and to communicate your intentions.
- ◆ **Horn**—Use your horn to gain attention but don't rely on it. Most motorcycle horns cannot be heard over traffic noise and a 4-speaker stereo. Use the horn to gain attention but don't rely upon it.
- ◆ **Lane Positioning**—Rider traffic strategy strongly affects visibility. Position yourself within a lane to avoid windblast from other vehicles, avoid roadway hazards and to create a space cushion between you and other traffic. Don't hide among other vehicles. Position yourself so drivers ahead can see you in their mirrors.
- ◆ **Fairings**—Motorcycles equipped with fairings were under-represented in crashes where motorists violated the motorcyclist's right-of-way. The larger the fairing and the brighter the color the more effective it seemed to be in preventing other vehicle right-of-way violations (Hurt, 1981)



# Join the Fun!

## 2006 WINGS OVER THE SMOKIES LOGO CONTEST

Who will be the designer for the '06 Rally logo? The logo selected will be used for the Rally Shirt and Rally Pin.

### GUIDELINES FOR ENTERING CONTEST:

- Limit of 6 colors;
- Colors should be clearly identified;
- Logo does not have to be professionally designed or to perfect scale;
- The name "Wings Over the Smokies" has to be part of the design;
- A GoldWing motorcycle has to be part of the design;
- As a reminder, this will be the 23<sup>rd</sup> Wings Over The Smokies Rally.

### WHO CAN ENTER?

All NC GWRRA Members

### PRIZE AWARD:

Winner will be recognized at 2006 WOS Closing Ceremonies with registration numbers 1 and 2 for the 2007 WOS Rally.  
Winner will receive \$100 at the 2006 Rally.

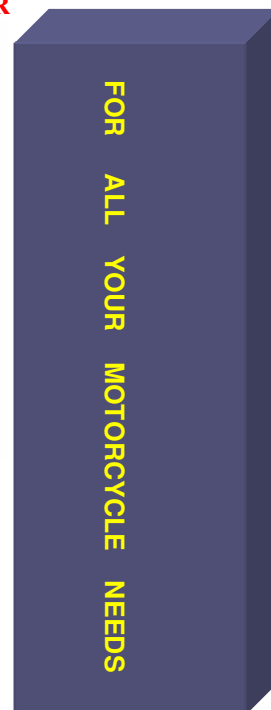
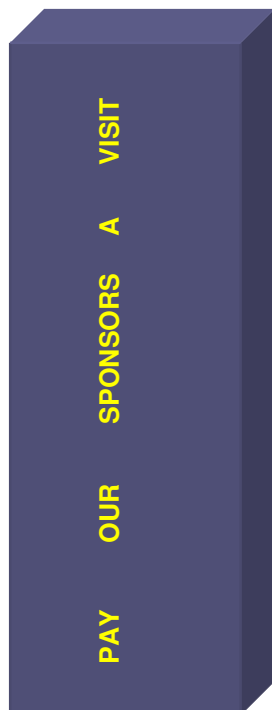
All entries have to be mailed no later than April 15, 2006

Mail to: Willie & Judy Hunt  
100 Peacock Lane  
Lumberton, NC 28358

As of October 17, 2005

\*\*\*\*\*

### CHAPTER A2 WELCOMES AND THANKS OUR NEWEST SPONSOR



STORE HOURS	
Monday	9:00 AM – 6:00 PM
Tuesday	9:00 AM – 6:00 PM
Wednesday	9:00 AM – 6:00 PM
Thursday	9:00 AM – 6:00 PM
Friday	9:00 AM – 6:00 PM
Saturday	9:00 AM – 5:00 PM
Sunday	Closed

591 S. Stratford Road Winston Salem NC 27103-1806 Toll Free Phone: 1(888)900-1939  
Phone: 336-765-0330 Fax: 336-765-0964



*Friends for Fun, Safety, and  
Knowledge"*  
**– CHAPTER NC-A2**  
*Lexington, NC*

Chapter Meetings: 1<sup>st</sup> Tuesday of  
Every Month  
Cap'n Steven's Seafood  
Hwy 150 & Friendship Church Rd  
Eating at 6:30 – Meeting at 7:30

**NEXT MEETING :**

**March 7, 2006**

Directions: US 52 to exit 100. Go west on Hickory Tree  
Road to first stoplight. Turn left on Highway 150. Cap'n  
Stevens is 7.5 miles on the right.

Visit us on the Web at [www.geocities.com/gwrranca2](http://www.geocities.com/gwrranca2)

Betty Dye  
781 Waitman Rd.  
Lexington, NC 27295