

GWRRA



REGION "N"



NC



A2



*Piedmont Goldwings Two*

# "GOLD NOTES"

*October 2006*

*Next Meeting : October 3rd*

## Chapter A-2 Staff

**Chapter Directors:**  
**Steve & Robin Deane**  
 336-998-0863

**Motorist Awareness Coordinator:**  
**Steve Deane**

**Assistant Director, Chapter Educator and Web Master:**  
**Randy Dezarn**

**Treasurers:**  
**Gary & Debbie Everhart**

**Ride Coordinators:**  
**AC & Edna Pennington**

**Membership Recruiting and Retention:**  
**Open Position**

**Sunshine Lady**  
**Cathy Beck**

**Technical Advisor:**  
**Tim Pennington**

**Special Events Coordinator:**  
**Ruby Pennington**

**Phone Tree Contacts:**  
**Bernie Motley**  
 336-764-5321

**Newsletter Editors :**  
**Bernie Motley**  
 363-764-5321  
**Betty Dye** 336-787-4700

**Chapter Couple**  
**Open Position**

## "Lexington Style"

<http://www.geocities.com/gwrranca2/>

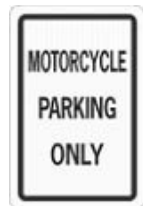
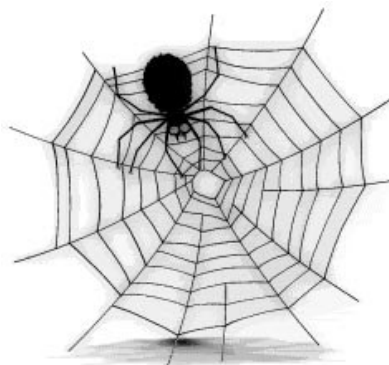
### Chapter Directors Corner

**T-ogether E-veryone A-chieves M-ore!**

And We Sure Did!!! Once again, Chapter A-2 members cheerfully greeted and assisted all of the Pre-Registered Guests at "Wings Over the Smokies", and received plenty of compliments and pats on the back for a job "well done". We had so many "1<sup>st</sup> Timers" this year and all of them left the Pre-Registration table feeling welcomed and appreciated for coming to North Carolina. I'm sure the goodwill we shared with them will bring them back again next year! And what could be more rewarding, and more fun than to have gained a few hundred more friends we'll see each year!

Robin and I thoroughly enjoyed working this year's "Wings Over the Smokies" as part of the "A-2 Team", just as we believe each and every member who was there also relished the experience. Heck, we can't wait to do it all again, with all you wonderful of folks next year!

Volumes have been written about "team building" and "team work",... I'm not about to add another volume. We just want to say to each and everyone of you: We're so glad you're on our team!



**Mike & Angie Mitchell**  
**Region N Directors**  
 3306 Listerbrook Court  
 Richmond VA 23230  
 804-266-7280  
[gwtqger@aol.com](mailto:gwtqger@aol.com)

### NC DISTRICT STAFF



[www.gwrranc.org](http://www.gwrranc.org)  
**District Directors**  
**Willie & Judy Hunt**  
 910-739-7369  
 100 Peacock Lane  
 Lumberton, NC 28358  
[thehunts@nc.rr.com](mailto:thehunts@nc.rr.com)  
 fax: 910-739-0768

### Assistant District Directors ( Central )

**Tom & Beverly Gladfelter**  
 2418 Cambridge Rd  
 Burlington NC 27215  
 336-584-8820  
[gwbikertom@bellsouth.net](mailto:gwbikertom@bellsouth.net)



### Assistant Chapter Director Corner

Another Wings adventure is now in the books.

No one in Chapter NC-A2 won the Grand Prize but we did come away with a few gems. Bernie won second place in the bike show, Tim and Ruby won \$25 each in the worker drawing, Guy Hanes won Oldest Rider to Ride their bike to the rally and I won a nice door prize.

The whole pre-registration process seemed to go very smoothly this year. As far as I could tell, there were no foul-ups or mis-cues anywhere. I guess we are finally getting the hang of it!

The best part is we all got there and back safely.



### CHAPTER SHIRTS :

Peggy Grotberg will be taking a T-shirt order at the next meeting.

She will only do **prepaid** orders so every one needs to have a **check or cash**.

This will probably be her last order. Those that have not paid for your previous order, bring your money.

### For Your Information :

Jr & Norma Freedle are now carrying Both Starlight and Escapade Motorcycle Trailers

### CHILDREN'S GIFT RIDE

Each year the North Carolina Highway Patrol sponsors a ride Gifts to Kids at Christmas. They raise money to give children a shopping trip to Wal-Mart to purchase gifts for themselves and their families. This year, as before, the ride will be in co-operation with Ray's Cycle Shop. The riders will be escorted by the N.C. Highway Patrol for a ride thru the countryside. Everyone is invited, so bring a friend and join us in this ride, so that the kids will have a great Christmas

DATE – October 8 ,2006

RAIN DATE October 15

MEETING PLACE – Ray's Cycle Shop, Thomasville, N.C.

REGISTRATION – 11 AM

REGISTRATION FEE - \$10.00 per Bike

LEAVE Rays Cycle Shop AT - 12 NOON

ARRIVE AT CLASSIC RESTAURANT IN DENTON – 2:00 PM

Door prizes, 50/50, Gift Certificates

Eddie Baker: Coordinator

Trick  
or  
Treat



## Rider Ed.

Since the weather will be getting cooler soon, some of you may be thinking about jackets. This article comes from the June/July *GWRRRA International Rider Education Newsletter*.

### ***Buyer Beware (Or At Least Be Informed) When It's Time To Replace Your Riding Jacket*** **By Bob Berry**

Buying a motorcycle helmet that will do its job when needed is pretty simple. Just look for the DOT sticker and stamp and you have a helmet that will do its job when needed. If your headgear also has a Snell rating, so much the better. The rest of your choice is all about fit, color, comfort and design. But, during my recent search for a new riding jacket, I discovered (once again) how much I didn't know about the subject. So, what follows are things to consider, and for you to decide what is fact and what may be "marketing." Sources include marketing materials from several manufacturers that shall remain nameless and several industry magazines and Web sites. For exhaustive detail on the European standards, visit <http://www.pva-ppe.org.uk/standards.htm>.

When many of us were in our teens, jacket choice was pretty simple – tough black leather. But now we have leather in multiple weights, and materials like Cordora, Ballistic Nylon, and Kevlar. Which is best? The answer is, "The one you are going to wear."

Anything beats riding in a T-shirt. But how do you know the one you are going to wear will do the job when it's needed? There are no officially approved safety standards in the U.S. for motorcycle jackets. The American Society for Testing and Materials (ASTM) may try to change that in the future, but, for now, we are limited to the CE (Conformite European) standard used widely in Europe and adopted by some American manufactures. Testing of body armor to meet the CE standard is similar to the U.S. DOT tests for helmets.

The difficulty is that some jackets have a "CE Approved" label which only means that the body armor used in the jacket is approved, not the jacket material itself. So, claims such as "abrasion resistant," "shock absorbing," "impact resistant," may be misleading. For a jacket to live up to those claims, it would have to meet the PPE standards (Personal Protective Equipment) set in England in 1995.

Some mesh jackets have a Polyurethane coating that reportedly may melt into the skin when sliding on asphalt. Others are equipped with body armor that would easily fail CE criteria and provide little protection in the event of an unplanned separation of you and your Wing. When that happens, research tells us that there are critical areas of the body needing the most protection. The area of the most frequent impacts includes knees, hips, elbows and shoulders. So, ensure that your proposed purchase offers good protection in those areas. While protection of other upper body parts may not require as much armor, abrasion resistance, seam strength and tear resistance are important considerations.

The minimum requirement to meet "high abrasion resistance" (sliding on your back, for example) is 4 seconds. An ordinary pair of denim jeans provides 0.6 seconds and a single layer of 1.4 mm cow hide will last 5.8 seconds. The material itself should have a tear-strength strong enough to repel a sharp object from penetrating the outer layer, and jackets should be lined with a slippery material to allow your body to slide against the external shell, further reducing the risk of your skin being penetrated by sharp objects that get through the outer layer. Additionally the lining should have a high melting point, to ensure it does not melt into your skin under friction from road surfing. None of the protective material will do you any good if the seams separate under stress.

A test reported in *Motorcycle News* (MCN, 2003), in the UK found only 4 out of 18 leather suits from the major European manufacturers, passed all the tests against the European Standard. Twelve of these suits failed the burst test due to either thread and/or leather failure.

Look closely at the seams. Seams in the critical areas should have at least one row of concealed or protected stitching, to hold the seam together after the visible stitching has been worn away against the road surface. Check the stitching. It should be regular with no dropped stitches, which indicate a potentially weakened seam. Leather should have 11-14 stitches per 5 cm, fabric should have 13-16 stitches per 5 cm. Too few stitches means the seam will be too weak, but too many stitches will actually weaken the fabric. Additional layers should be double stitched.

Getting the answers to all of this requires some research. Magazine reviews and motorcycle Web sites are a good place to start. I've had good luck talking directly with the jacket manufacturers. Most are pretty straightforward with their responses to my questions.

So, which jacket is best? To repeat – "the one you are going to wear." Choose yours for comfort, utility, visibility, good looks, and price. Then add a little homework to ensure that the jacket will perform well at the critical time.



Randy Dezarn



### ***Tim - The Tech Guy***

If anyone missed Nick Hopper's article in the October issue of Wing World go back and check it out. He told of a fellow that had two tires go down on the rear of his Wing. The wheel and tire was checked out after the first tire was replaced. Nick suggest that the valve stem was the culprit. So be sure that each time you replace your tires that a new valve stem is installed! He also suggest that you carry a spare valve stem just in case you can not find one on the road. Also , as I have suggested here before carry a spare valve stem holder. These can also break or come off causing a valve stem failure!

Tim Pennington



#### **News from National:**

**Gold Wing Road Riders Association** 21423 North 11th Avenue, Phoenix AZ 85027 CONTACT: Paul Hildebrand, CEO

(800) 843-9460, ext. 218 or (623) 581-2500, ext. 218 [www.gwrro.org](http://www.gwrro.org)

## **Jim Hodge Named Operations Director Following Executive Director's Resignation**

Phoenix, Arizona

(September 18, 2006) Paul Hildebrand, Chairman of the Board & CEO of the Gold Wing Road Riders Association regrettably announced today the resignation of Don Brock as Executive Director, effective September 28, 2006.

Senior National Director Jim Hodge of Ocean Springs, Mississippi, has been appointed to the new office of International Operations Director, and will coordinate and direct GWRRA's operations activities in the field. As former Region A, Mississippi District and Mississippi Chapter A Directors, Jim and his wife, Margie, bring years of experience in GWRRA operations to their new position. Regional Directors, Department heads and Members can reach Jim at (228) 875-1764 or via e-mail at [rallybum@cablone.net](mailto:rallybum@cablone.net).

Chairman of the Board Paul Hildebrand is currently examining GWRRA's corporate requirements and will announce the leadership appointee for the business side of the Association in the near future. In a statement to GWRRA's Regional Directors and Department Heads today, Don Brock encouraged the Officers and Members to view his stepping down as a positive change for the good of the Regions, Districts, Chapters and all Members.

Although satisfied with his ability to promote Member participation and fun during his sixteen-month tenure, Don cites personal difficulties due to health issues as the reason for his resignation. "Growth is critical to replenish the Chapters and continue our programs and activities," Don said. "It is therefore appropriate that I step aside and encourage a stronger, growth-oriented manager to assume the position." Don will continue to offer his service, support and assistance to the Membership in the role of Executive Director Emeritus.

Don & Cindy are looking forward to active retirement, living full-time in their 40-foot Itasca Horizon RV, as they travel around the country. GWRRA, with its motto "Friends for Fun, Safety and Knowledge," is a not-for-profit organization with over 82,000 Members in 50 countries, and 4,000 volunteer leaders providing rider education and social structure, along with organizing events, rallies, rides and meetings throughout the year.

Visit GWRRA's Web sites: [www.gwrro.org](http://www.gwrro.org) and [www.wing-ding.org](http://www.wing-ding.org) or call (800) 843-9460 or (623) 581-2500 (in





## Gold Wing Road Riders Association

21423 North 11th Avenue, Phoenix AZ 85027

CONTACT: Paul Hildebrand, Chairman of the Board  
(800) 843-9460, ext. 218 or (623) 581-2500, ext. 218

[www.gwrro.org](http://www.gwrro.org)

## PRESS RELEASE

# Home Office Announces New Executive Director

(Phoenix, Arizona—September 28, 2006) Last week, GWRRA Chairman of the Board Paul Hildebrand announced Don Brock's resignation as the Association's Executive Director and the appointment of Jim Hodge as the Association's new International Director of Operations. Paul noted, however, that he would take some time to decide who would take over leadership of the business side of the Association.

Today, Paul says he is happy to announce the appointment of Melissa Nordeoff, GWRRA's first female Executive Director, to that position. "I'm certain Melissa will form a close team with Jim Hodge, so that while Jim will primarily help the field officers, Melissa will team up with Jim on national and corporate issues," Paul says. "She'll ensure the processes and activities of the Home Office are seamless and friendly to our Membership."

Paul goes on to say that he's worked with Melissa for over 10 years and that she always excels at whatever she takes on. "And, being younger than most current Members, she has new ideas, concepts, and questions that some of us 'ol' fogies' can't think about—much less remember," he adds laughingly.

Melissa says she remembers much about GWRRA from her very youngest years (she's been a Member since birth), especially the "Friends for Fun" part. But she says one of her fondest—and most impressionable—memories took place at 1992's Wing Ding when she was able to help work the Goodie Booth. "

When I was first able to participate and spend time with the volunteers," Melissa says, "I realized whether anyone knew who you were or not, everybody had a smile for you; everybody said, 'Hey, how's it going?'; everybody watched out for each other. And it was such a warm, friendly atmosphere that I've never been able to feel anywhere else. It was fun."

Indeed Melissa, who says many of her "new" ideas actually revolve around the Association's roots of volunteerism and motto of "Friends for Fun, Safety & Knowledge" is certainly qualified to offer advice. Most recently, she has served as the Operations Manager for GWRRA and has trained a very good staff of professional customer service people.

Melissa says she'll work on programs that—first and foremost—show appreciation for GWRRA's many volunteers and Members. In fact, Melissa is responsible for developing the sub-theme of GWRRA's National and International 30th Anniversary Events—"Giving Back to the Members." And, among the first qualities she lists as her personal qualifications for the position, is her desire to help our Family.

"And now I want to help give more appreciation to the volunteers and the Members for everything they do," Melissa says. "After all, they're the reason we've been here for 30 years."

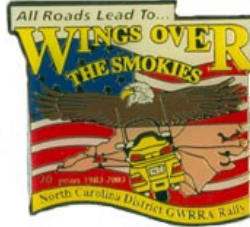
Email: [mnordeoff@gwrro.org](mailto:mnordeoff@gwrro.org)

Phone: 623-581-2500 X212

FYI: Melissa is Paul Hildebrand's 26 year old daughter







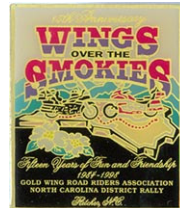
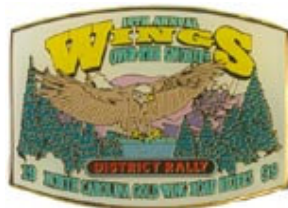
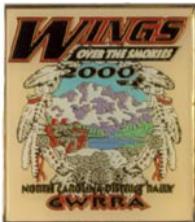
### 84 Years Young and Still Riding

Guy Hanes was Honored as the Oldest Rider at Wings Over the Smokies at the opening ceremonies on September 22, 2006. Guy has been riding since 1939. His first bike was an Italian make, and then he purchased a Harley and then an Indian. His first Gold Wing was a black 1980 1100 model. He has had several Gold Wings over the years. He gave up riding for a while, but this year he decided that he wanted to be on the road again and purchased his present bike, a 1981 GL-1100 GoldWing.

Guy is a Charter Member of A2. He has attended 13 National Rallies and been to 16 Wings Over the Smokies Rallies. He has traveled many miles over the 67 years and seen many changes in motorcycle design. He recently moved to Cherryville, but will continue to be a part of A2. In addition to riding his motorcycle he also enjoys fishing at the coast.

Our congratulations to Guy and we can only hope that we are all still riding at his age. We all wish Guy many more years of great rides and Chapter A2 is Grateful to have him riding with us. He can hold his own on long rides and is a Great Group Rider. Guy is 84 yrs Young and still riding on **2 wheels**. Congratulations Guy on a Great Achievement .

May you always have clear skies as you ride off into the Sunset.





REMEMBER OUR SICK and SHUT IN  
**Keep Them in your Prayers**  
 Norma Freedle's Mother  
 Tim Beck's Mother  
 Sue Stalter's Mother  
 Sonny Dye is Recovering from Hernia Surgery



October Birthdays

None

GWRRA Anniversaries

Marshall Lanning 10/97

GWRRA Renewals  
 None

**Wedding Anniversaries**

Randy & Carolyn Dezarn 10/09  
 Tim & Ruby Pennington 10/13





highest point east of the Mississippi. We spent the night in Asheville. The next morning we got back on the parkway and headed to Cherokee. We stopped in Cherokee to do the tourist thing. We went in and out of all the stores picking up all the Indian stuff and making jokes about everything being made in China.

After lunch we didn't get back on the parkway but headed through the mountains to Pigeon Forge. We passed the southern tip of the parkway and entered the Great Smokie Mountain National Forest. If you have never been on this stretch of road it is well worth the trip. The scenic views are some of the best in our mountains. That night we stayed in Pigeon Forge, TN. We had dinner at the Apple Barn. They serve apple butter and biscuits while you wait for you meal. The menu has several items cooked with apples or smoked with apple wood. Everything was very good. There was a large gift shop that had everything apple and some of the Biggest Fried Apple Pies you ever saw.

The next day we went to Floyd Garrett's Muscle Car Museum in Sevierville, TN. If you love old cars this is the place to see them. Afterwards we headed back to the southern tip of the parkway for our ride back home. We cheated a little. We got off the parkway in Boone and took 421 the rest of the way.

The next spring we made our plans to travel the northern half of the parkway. Robert and I plus two more riders headed up 52 on another sunny July morning. This time we turned north at Fancy Gap. It was chilly on the mountain so we stopped a rest area on the parkway to put on a jacket. There we met several couples from Canada. One of the bikes was a GL1500 with a sever tire problem. It appeared on of the belts in the rear tire had separated and caused a large knot to come up on the sidewall. They said it made a bad wobble. One interesting thing was only one of the couples spoke English. We make a couple of phone calls for them and had someone come up to load the bike to get the tire repaired.

We reached the northern tip of the parkway by the end of the day. We spent the night in Waynesboro, VA. It's a quite little town that has a lot of civil war history. As luck would have it, one of the Harleys on our trip developed a little problem that needed tending to. So the first thing the next morning we headed to the nearest Harley dealer we could find. We ended up at Shenandoah Harley Davidson in Staunton, VA. We left the ailing bike and headed out for breakfast. After eating we went back to the dealer and found the bike repaired and ready to go. My hat's off to the folks there for taking care of the bike on short notice and repairing it so quickly.

Next we headed to Skyline Drive. The south end of the drive begins on the opposite side of the bridge where the north end of the Blue Ridge parkway ends. You have to pay to ride Skyline drive but the ticket is good for several days. The speed limit is 35 mph and the road is 105 miles long. Let me tell you, it takes a long time to ride 105 miles at 35 mph! The most memorable site on Skyline drive is seeing a bear standing on the side of the road watching traffic go by. I wanted to stop but my riding buddies had other plans!

The original plan was to ride Skyline drive to the northern end at Fort Royal, VA and ride it back to Waynesboro but the side trip to the Harley dealer changed that plan. We grabed some lunch and hit Interstate 81 to head back to Waynesboro. The next day we got back on the parkway and headed home.

It took two years and two separate trips but I finally got to tide the entire length of the Blue Ridge Parkway. Plus, as an extra bonus, I got to ride The Great Smokie Mountains National Park and Skyline Drive. To me this is the best places to ride a motorcycle.

Randy Dezarn





Notice : The time for the Ride Planning Meeting on October 7<sup>th</sup> at Venezia's has been changed from 1:30 to 5:30 due to the party room being already booked for 1:30.

<b>OCTOBER</b>		
October 7	Ride Planning Meeting ( Venezia) Advance	Party Room 5:30 PM
October 8	+ Children's Gift Ride (Rays Cycle Shop ) +	10:45 AM @ LSB
October 13/14/15	Mt. Airy Autumn Leaves Festival	Downtown MT.Airy
October 14	Spook Trail Ride ----Walkertown	TBA
October 21	Lexington Barbecue Festival	Downtown Lexington
<b>NOVEMBER</b>		
<b>OPEN</b>		
<b>DECEMBER</b>		
December 2	Gifts On Cycles Butner, Goldsboro, & Morganton, NC	TBA
December 9	A2 Christmas Party -Classic Restaurant	Denton 5:30 PM

# FOR SALE

1994 1500 Gold Wing Trike (Teal)  
 74,000 miles  
 Motor Trike Conversion  
 New Rear Suspension ( May 2005)  
 New Universal Joints  
 CB,AM/FM RADIO w/tape player  
 Cruise Control  
 Tulsa Windshield  
 Easy Steer  
 \$16000.00  
 Sonny Dye 336-787-4700  
 Selling Due to Getting a New 1800 Trike



Each Friday night Chapter A2 meets at Chars parking lot on N.Main Street in Lexington, choose a restaurant , and ride to eat. We also sale 50/50 tickets. A name is drawn at our monthly meeting and the winner at the September meeting for the Month of August was AC Pennington. Congratulations AC. Come and join us , we have lots of fun and maybe you will be next months winner, you have to be present to win, but that means we will get to see you again at our monthly meeting.



# INTRODUCING THE NEW GOLD STANDARD



There's a whole new level of luxury touring—and that's the 2006 Honda Gold Wing. It's now available with a selection of new Feature Packages, including Honda Satellite-Linked navigation System,<sup>™</sup> Premium Audio, the comfort of electrically heated grips and seat, plus toe vents and ABS.\* It's a wealth of features you've got to see for yourself—and you can at your Honda Dealer.

\*Not all features available independently. See your dealer or log on to [www.honda.com](http://www.honda.com) for details

## HONDA OF WINSTON SALEM

591 S. Stratford Road Winston Salem NC 27103-1806

Phone: 336-765-0330 Fax: 336-765-096

[www.hondapowerhouse.com](http://www.hondapowerhouse.com) Toll Free Phone: 1(888)900-1939

[honda.com](http://honda.com) ALWAYS WEAR A HELMET, EYE PROTECTION AND PROTECTIVE CLOTHING. NEVER RIDE UNDER THE INFLUENCE OF DRUGS OR ALCOHOL, AND NEVER USE THE STREET AS A RACETRACK. OBEY THE LAW AND READ YOUR OWNER'S MANUAL THOROUGHLY. For rider training information or to locate a rider training course near you, call the Motorcycle Safety Institute at 1-800-446-9227.

Gold Wing,<sup>®</sup> Honda Satellite-Linked navigation System<sup>™</sup> and Performance First<sup>™</sup> are trademarks of Honda Motor Co., Ltd. (9/05)

## Honda Of Winston-Salem

All Jackets, Helmets, and Chrome on Sale  
See Store for details

### Cap'n Stevens Seafood Restaurant

Hwy. 150 & Friendship Church Road



Lexington, NC

(336) 731- 8470

### Venezia Italian Family Restaurant

5279 US Highway 158 Advance, NC

336-940-6787



Dine-In or Take-Out  
Party Room Available



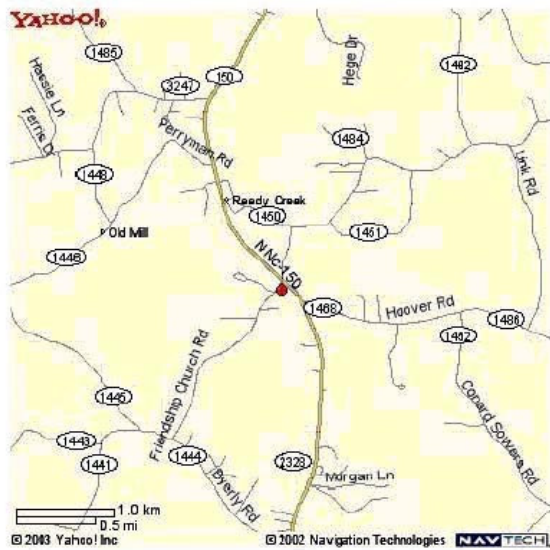
We Specialize in Barbecue Catering

**John Wayne's  
Lexington BBQ, LLC**

601 West Fifth Avenue  
Lexington, North Carolina 27292

(336) 249-1658  
(336) 248-5482  
Fax (336) 249-4699

TIM MYERS  
Owner



Directions: US 52 to exit 100. Go west on Hickory Tree Road to first stoplight. Turn left on Highway 150. Cap'n Stevens is 7.5 miles on the right.

Visit us on the Web at [www.geocities.com/qwrranca2](http://www.geocities.com/qwrranca2)

*Friends for Fun, Safety, and Knowledge"*  
**– CHAPTER NC-A2**  
 Lexington, NC

Chapter Meetings: 1<sup>st</sup> Tuesday of  
 Every Month  
 Cap'n Steven's Seafood  
 Hwy 150 & Friendship Church Rd  
 Eating at 6:30 – Meeting at 7:30

**NEXT MEETING :**  
**October 3,2006**

**Piedmont Gold Wings Two**  
**781 Waitman Rd.**  
**Lexington, NC 27295**