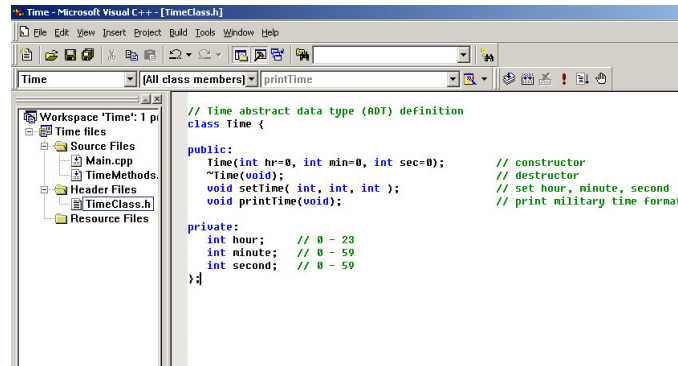
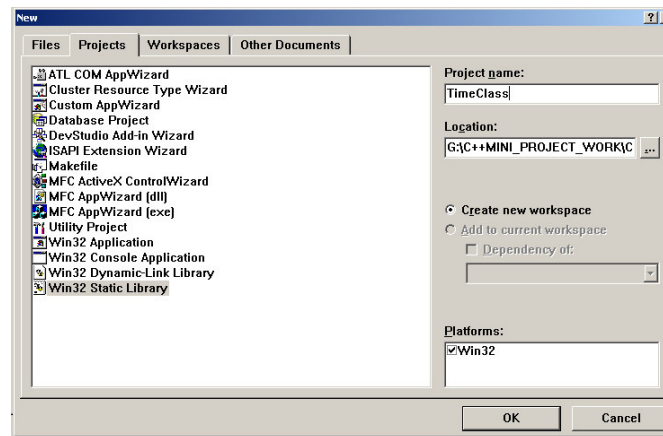


Guideline of create and use the library file for C++

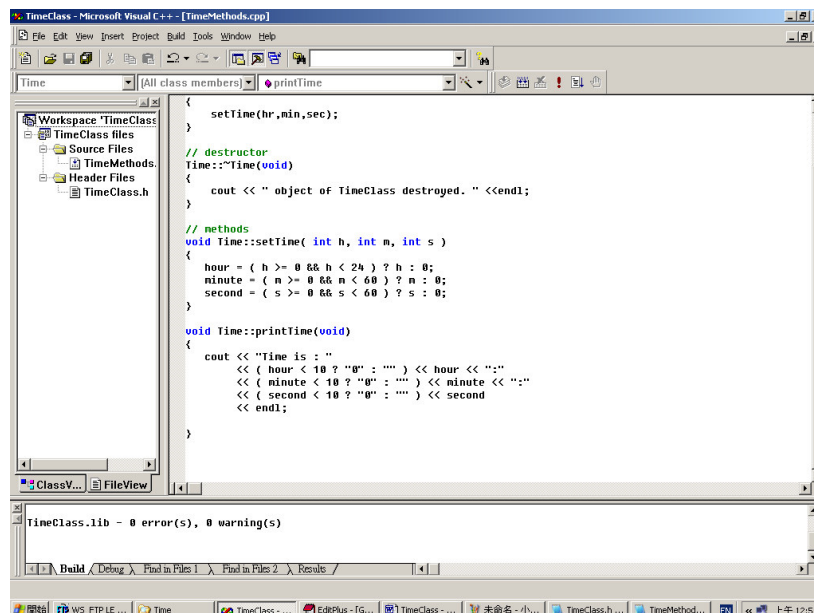
Develop a Class use normal workplace



After the Class is fully completed, we will create a class library.

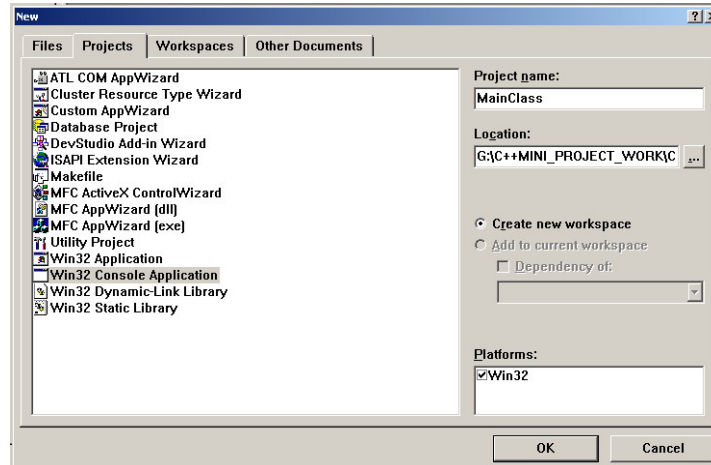


Add the header file and sources file for the class, and then compile it. Thus the library file is created!

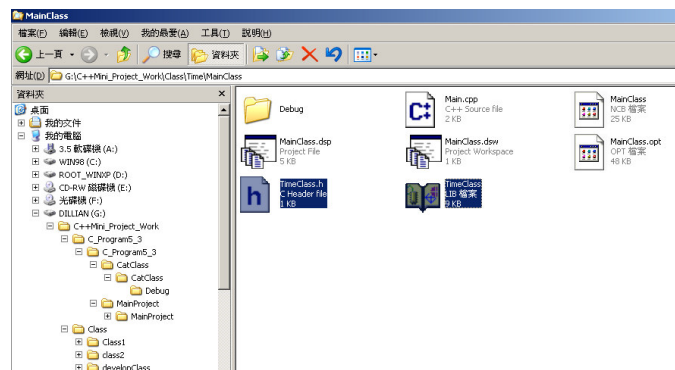


ClassCreate_Load

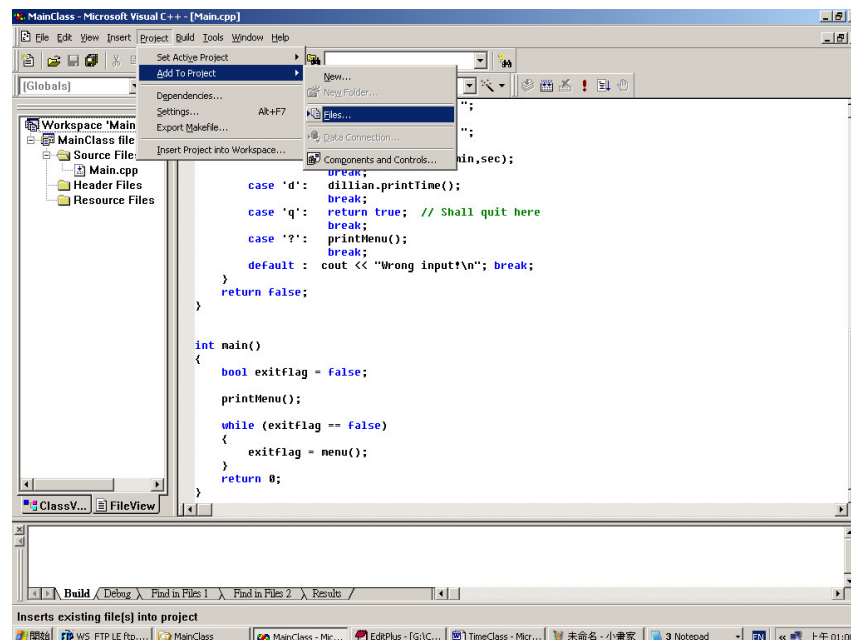
Create a normal workplace in order to use the library file.



Copy the header file and library file to the directory of the main folder.



Add the header file and the Library file to the workspace.



if we success to add the header and library file, the pull down menu will pop up when we type the object name of the class.

