



November 2006

Volume 25, Issue 11



# The Word

A monthly Publication of the  
Religious Science Church of Honolulu



*Awakening Humanity to Its Spiritual Magnificence ...*

## NOVEMBER 18 THE DATE FOR 'OHANA POTLUCK



Winie Smith and William Schulz will again host our Thanksgiving Potluck at the Hokuhoa Recreation Center of their condo in Temple Valley. The date is Saturday, November 18.

It's pupu and talk story time from 5:30 until 6:00 and then we get down to the serious eating.

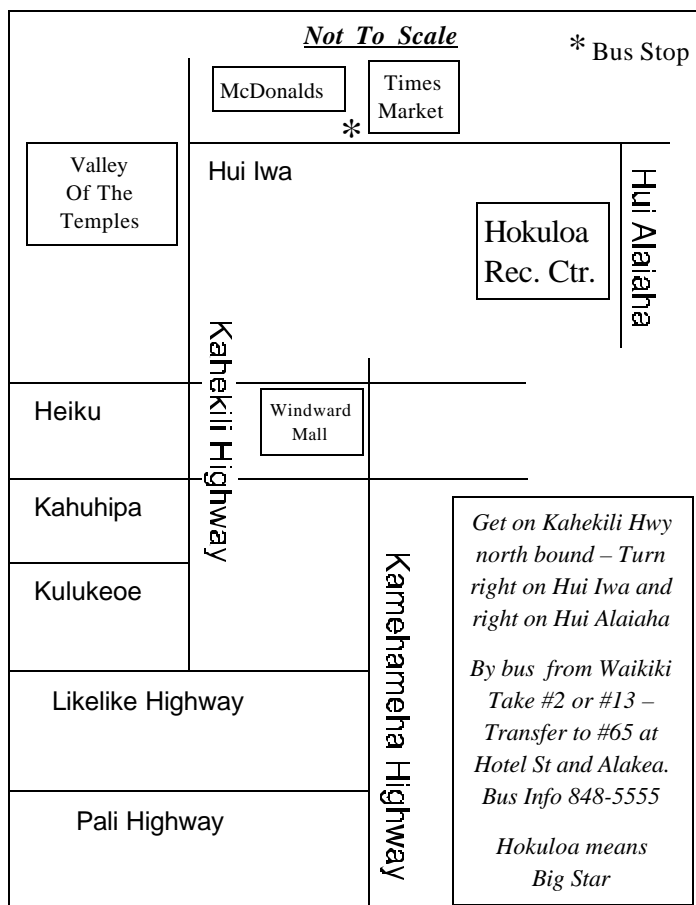
There's a swimming pool if you want to take a pre-dinner dip. Barbecue grills are available if you really want to get fancy, but bring your own charcoal and lighter for that.

The multi-purpose sign-up sheet is at our Center. When you sign up, please note:

- ♥ Your name.
- ♥ Number of people in your party.
- ♥ Dish you're bringing to share.
- ♥ Whether you need a ride or can provide one.
- ♥ Whether you will help with set up and/or clean up.

There's a fee of \$2.50 per person payable at the time you sign up. This will cover the cost of paper plates, cutlery and da kine.

How to get there? From the H-3, Pali Highway, or Likelike Highway, take Kamehameha Highway all the way to Temple Valley in Kahalu'u. Then get on Kahekili Highway (see map above) until you see the shopping center with McDonalds, Times Supermarket, and the Theaters. Turn right on Hui Iwa Street and right again on Alaiaha Street. You can't miss the Hokuhoa Recreation Center.



Science of Mind ® is a registered U.S. trademark of SOMARK, INC. and all rights are reserved.

**Religious Science Church of Honolulu**  
**The Center for Positive Living**  
 Awakening Humanity to  
 Its Spiritual Magnificence...  
 Member of Religious Science International

P.O. Box 22448  
 Honolulu, HI 96823

Office, classes, and Sunday Celebrations of Life:  
 1521 South King Street, #301

Phone: (808) 947-0690

Dial an Inspiration: (808) 949-1269

FAX: (808) 949-1269

E-Mail: [info@HonoluluReligiousScience.org](mailto:info@HonoluluReligiousScience.org)

Website: [www.HonoluluReligiousScience.org](http://www.HonoluluReligiousScience.org)

#### MINISTER

Rev. Frank White 947-0690

Rev. White is available for spiritual counseling by appointment. The fee is \$50.00 per hour. He is also available for weddings, memorial services and naming (christening) services.

#### LICENSED PRACTITIONERS

Bonnie Prebula 526-1536

Frank White 947-0690

There is a fee for professional Practitioner work. However, no one will ever be denied Practitioner services because of a temporary financial challenge. Your Practitioner will include treatment for your abundance in their work for you.

Treatment done following a Sunday Celebration of Life is a gift from the Practitioner to you and to our Center.

#### BOARD OF TRUSTEES

President:

Rev. Frank White 947-0690  
 (Spiritual Education)

Vice President:

Bonnie Prebula 526-1536  
 (Expansion/Membership)

Treasurer:

Gerard "Jerry" Kohn 923-1317  
 (Financial)

Secretary:

Bob Thomas 941-8962  
 (Volunteers)

Member at Large:

Maurene Bishop 456-3152  
 (Public Relations and Publicity)

Member at Large:

Monica Borden 949-8694  
 (Social)

Member at Large:

William Schulz 239-0964  
 (Facilities and Equipment)

#### WORD STAFF

Editor-in-Chief: Rev. Frank White

Layout/Graphics: Deborah Robarts



William Schulz (Nov. 2)

Pam Weaver (Nov. 4)

Rev. Virginia Teibel (Nov. 4)

Dr. Nate Nathanson (Nov. 6)

Jean Kimura (Nov. 6)

Rev. Patri Hildreth (Nov. 11)

Jim Erhart (Nov. 12)

JoDean Wilson (Nov. 15)

Joy Kemkaran (Nov. 22)

Larry Weaver (Nov. 29)

If you have a birthday this month but your name isn't here, please call the office and let us know.

We want to wish you a Happy Birthday, too!



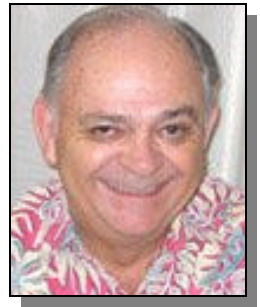
The Word is available free on our website to anyone.

It is mailed without charge to current members as a benefit of membership.

A paid subscription of \$20 for 12 issues will get a hard copy to you by First-Class mail.

Kathryn Kay published a book titled If the Shoe Fits in early November, 1941. One of the poems in it was called "Thanksgiving Prayer." Kathryn ran a small store almost across the street from the NBC radio studios in Hollywood. Many Hollywood personalities would hire Kathryn to write special poems for them and her book sold well.

Frank  
Talk



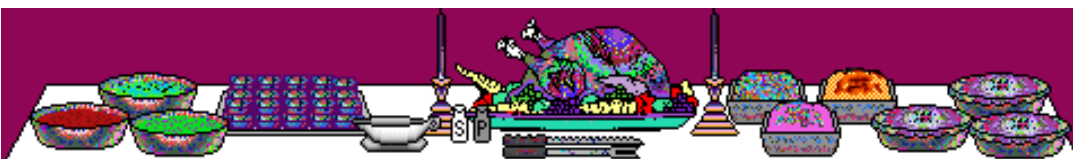
Rev. Frank White

Our country was about to begin the sesquicentennial celebration of the Bill of Rights and Kathryn's poem was featured in a number of the celebrations around the country. Before the celebration had been completed, Pearl Harbor had been attacked and we were at war and the poem took on greater meaning.

### Thanksgiving Prayer

God, ev'ry year about this time,  
according to routine,  
I've bowed my head in the accepted way  
and offered thanks, like some well synchronized machine  
that prayed because it was the time to pray.  
But, God, this year is different, this year I seem to feel  
America's Thanksgiving is my own,  
that in my nation's gratitude I have a part that's real,  
a part that until now I've never known.  
And, God, this year a deep humility has filled my heart,  
a newborn pride rings true thruout my soul  
because I do belong, because I have and am a part,  
a tiny part of one tremendous whole.  
I think I know the feeling of those first Americans  
who said, "We must give thanks for this, our land."  
I cherish now the rights that are each woman's, ev'ry man's,  
the rights I've just begun to understand.  
This year my heart has learned what all Thanksgiving Days are for,  
true thankfulness at last I realize,  
but, God, I'm sorry that it took the tragedy of war  
in other lands to open up my eyes.  
Again I bow my head but this time deep within me stirs  
a mighty prayer, part of one vast design,  
"God, help me make America as proud that I am hers—  
as I am proud, and grateful she is mine!"

Not a bad prayer for the present. Don't you agree?



You are Love!

Rev. Frank

# From Our Board Room



In most Christian churches if anyone made the statement, "I am God," he/she would be chastised for being blasphemous—or at the least, considered a bit crazy. Yet, in those very churches, they extol these attributes of God: omnipotent (all powerful), omniscient (all knowing), and omnipresent (everywhere present at once). If God is everywhere, then what are we, if we are not God?

"But I am not all powerful," you may say. "I can't create stars or move mountains. I am not all knowing; I certainly don't know everything there is to know. And I can tell I am not everywhere at once; physically I can be only in one place at a time."

Part of the problem in understanding God is the common belief that God is a person—much like a glorified Santa Claus that knows if we've been naughty or nice, and punishes or rewards us accordingly. In Religious Science we do not believe in a personal God, but rather an impersonal creative force in the universe. And we do not believe in punishment; rather that life brings us what we deserve according to how we live it.

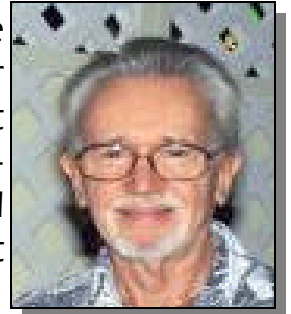
We do believe that God is First Cause; that everything in the universe has emanated from this Source; that God expresses Itself (not Himself) in myriad ways in the cosmos, including expressing Itself as you and me.

Everything in the universe had to be created from "God-stuff," for if God is First Cause, no other materials existed. Even if God creates new materials, those also have to be God, as there is nothing that God is not (for God is omnipresent—everywhere present at once).

In Religious Science we believe that we are individualized expressions of God, Spirit, Mind, Source—or whatever word works best for us. So, as an all-knowing God manifests as us, we can be all-knowing about the points of reference that are our own lives. We can be all powerful in using our individual minds to create the kinds of lives we wish to express. And we can have a sense of being everywhere present when we realize that on a certain level we are interconnected with all life and all expression.

Indeed, the more we realize that the statement "I am God" is true, the more we will experience abundance, love, joy, peace, wisdom, harmony, creativity, health, and wholeness!

So the next time you hear Rev. White say, "God is all there is," know that God includes you and me.



Bob Thomas  
File Photo

Bob Thomas  
Volunteers





## WE GIVE THANKS FOR "GIVE ALOHA"



Among the many things for which we are thankful, we certainly include Foodland and its annual "Give Aloha" Community Matching Gifts Program.

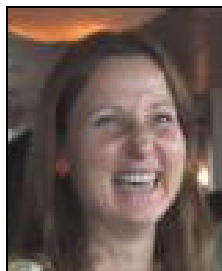
Last month our members and friends donated \$4,661.94 to us through the program. Those gifts enabled us to receive \$957.93 from Foodland and an additional \$200.40 from the Western Union Foundation.

No one had to sell anything, make anything, or buy anything and this fundraiser raised \$1,158.33 for our church! Now that's a fundraiser for which to be thankful, and we certainly are. Thankful to Foodland for sponsoring the program, thankful to Western Union for joining them, and thankful to the members and friends whose donations brought the additional income to our church.

Incidentally, since Foodland began the Give Aloha program in 1999, it has raised \$9 million for the non-profit organizations of Hawai'i, so we're not the only ones who are thankful for it.



## BOARD MEMBERS SWAP PORTFOLIOS



In 2005, Julia Postolaki was elected to hold the Facilities and Equipment Portfolio and William Schulz was elected to hold the Public Relations and Publicity Portfolio. When Julia left for Japan this year, Maurene Bishop was appointed to complete Julia's term.



Both William and Maurene have discovered that at this particular time in their lives they believe that they may function more productively and better serve our church by swapping Portfolios. After discussing the idea, they proposed the switch to the Board of Trustees at the Board meeting in October and explained their reasoning. Since the remainder of their terms is the same and they are both well qualified for either position, the Board approved the request.

So Maurene is now in charge of Public Relations and Publicity and William is responsible for Facilities and Equipment. William has more freedom to scout possible locations than Maurene had as an employed single mom. Maurene can work on p.r. at home while her expertise as an attorney specializing in contract law is still available to us as we explore possible new locations and lease agreements.



Our Board of Trustees appreciates your financial support of our Center. We especially appreciate those of you who remember to send in your gifts and tithes when you're not in attendance.

## DON'T FORGET TO VOTE!



Tuesday, November 7, is Election Day. If you aren't already registered, it's too late to register for this year's election. In that case, please get registered so that you can vote in "the big one" two years hence.

If you are registered, be sure that you exercise your franchise by casting your ballot.

You can vote early as a walk-in absentee up until November 4. If you plan to do that, be sure that you have a picture I.D. with you. Sites and times for walk-in voting here on Oahu are:

Honolulu Hale 8:00 A.M. - 4:00 P.M. Monday - Saturday

Kapolei Hale 8:00 A.M. - 4:00 P.M. Monday - Saturday

Pearlridge Center Satellite City Hall

Windward Mall, first floor near Sears.

(Check for the hours at the two mall locations.)

Of course, you can wait until Tuesday, November 7, and vote at your regular polling place. The important thing is that you vote. Every vote is important and yours may be just the one to make a definite difference.



## YOUR MEMBERSHIP IS IMPORTANT



Each year, Religious Science International requires that we report out active membership by the end of the year. This is a time consuming process at best and it's made more difficult when people don't respond in a timely fashion to our polling.

Part of the problem may be that some people apparently don't realize that membership in our church is not automatically renewed each year. It must be renewed each year.

We're going to begin the process this month and trust that you will respond quickly and in an affirmative fashion. We'll be handing out the materials in church during the month. We ask that you reaffirm your membership if that is your choice. If you are not presently a member, we invite you to become one.



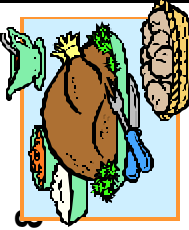


We'll mail the polling materials to those not in attendance during the early part of the month.

Whichever way you receive the materials, please complete them and return them to us as soon as possible so that we may make an accurate and timely report to Religious Science International.

Mahalo for your kokua !

Thank you  
Danke  
Xie xie  
Khawp khun  
Yum totio  
Mahalo  
Salamat  
Juspal  
Spacibo  
Arigato  
Obrigada



<b>NOVEMBER 2006</b> Office: (808) 947-0690 Dial an Inspiration: (808) 949-1269					<b>Sunday Celebration of Life</b> 10:00 A.M.		
SUN	MON	TUE	WED	THU	FRI	SAT	
	<p>Make an investment in your total well being. Enroll in <b>THE NATURE OF EFFECTIVE PRAYER !!</b></p>	 <b>→ VOTE →</b>	<b>1</b>	<b>2</b>  SOM 300 #23 6:30 - 9:30	<b>3</b>	<b>4</b>	
<b>5</b>  Single Service 10:00 A.M.	<b>6</b>	<b>7</b> "The Nature of Effective Prayer" Begins 7:00 - 9:30 P.M.	<b>8</b>	<b>9</b>  SOM 300 #24 6:30 - 9:30	<b>10</b> <b>Movie Night</b> 7:00 P.M.	<b>11</b>  Veteran's Day	
<b>12</b>  Single Service 10:00 A.M.  Board Meeting 11:45	<b>13</b>	<b>14</b> "The Nature of Effective Prayer" #2 7:00 - 9:30 P.M.	<b>15</b>	<b>16</b>  SOM 300 #25 6:30 - 9:30	<b>17</b>	<b>18</b>  <b>Potluck</b>	
<b>19</b>  SingleService 10:00 A.M.	<b>20</b>	<b>21</b> "The Nature of Effective Prayer" #3 7:00 - 9:30 P.M.	<b>22</b>	<b>23</b>  <b>Thanksgiving</b>	<b>24</b>	<b>25</b>	
<b>26</b>  Single Service 10:00 A.M.  Bring a First-time Guest Sunday	<b>27</b>	<b>28</b> "The Nature of Effective Prayer" #4 7:00 - 9:30 P.M.	<b>29</b>	<b>30</b>  SOM 300 #26 6:30 - 9:30			



## Looking ahead

**December 16: Holiday Party, Wai`oli Tea Room, 2950 Manoa Road, 6:00 P.M.**

**December 24: Candlelighting Service, 7:00 P.M.**

**January: Annual Membership Meeting**

**Time and place TBA**

**What classes and social activities would you like to see us offer in 2007?  
Let a Board Member know!**

### ***WE CARE!***

**We want to know  
if you're  
housebound  
or in hospital.  
If you'd like a  
phone call  
or a visit,  
let us know.**

**You're  
an important part  
of our `ohana.  
Call the office,  
or have someone  
call if you can't.  
We'll get right back  
to YOU.**

### **BUS INFORMATION TO OUR CENTER**

For more info, see **www.thebus.org** or call **848-5555**

<b><i>Bus</i></b>	<b><i>Starting Point</i></b>	<b><i>Bus Stop to Get Off</i></b>
<b>1</b>	Kalihi (East)	King & Kalakaua
<b>1</b>	Hawaii Kai (West)	Beretania & Kalakaua
<b>2</b>	Kalihi (East)	King & Kalakaua
<b>2</b>	Wakiki (Kuhio)	Beretania & Kalakaua
<b>5</b>	Ala Moana Ctr	King & Kaheka
<b>5</b>	Manoa	Beretania & Kalakaua
<b>6</b>	Town & Ala Moana	King & Kalakaua
<b>6</b>	Manoa	Beretania & Kalakaua
<b>13</b>	Kalihi (East)	King & Kalakaua
<b>13</b>	Waikiki (Kuhio)	Beretania & Kalakaua

**Would you like a hard copy of *The Word* sent to you each month?**

**YES! I want to subscribe to *The Word*! Send me the next 12 issues.**

**My Name:** \_\_\_\_\_

**Address:** \_\_\_\_\_

***Enclosed is my check for \$20***



## FILM NOIR SPOOF, ANYONE?

If you were a fan of the tough guy detective movies of the 1940's, you don't want to miss our Movie Night this month. On Friday night, November 10, we'll spoof those movies even as we enjoy appearances of many of the stars who were featured in them.



If The Maltese Falcon and similar films were before your time, you're still probably familiar with them from the late-late show and the Movie Channel.

Alan Ladd, Barbara Stanwyck, Ray Milland, Ava Gardner, Burt Lancaster, Humphrey Bogart, Cary Grant, Ingrid Bergman, Veronica Lake, Bette Davis, Lana Turner, Fred MacMurray, Joan Crawford, Charles Laughton and James Cagney are among the many who show up 40 years after their heydays in an ingeniously crafted film that has characters from the old films interacting with characters in the parody filmed in the 1980s. The film editing, the black and white photography – even the lush score by Miklos Rozsa – make for a wonderful send up of the classic noir feature films. Movie buffs have the added fun of trying to figure out from which movies the clips of the "cameos" were lifted.

Show time is 7:00 P.M. As usual, we'll provide the popcorn and you bring your own favorite movie snacks and beverages.

There's a \$1.00 per person cover charge, payable at the time you sign up. We do ask that you sign up if you plan to attend so that we'll know how many chairs to set up



## BE A GOOD SCOUT

Our search for a new location continues and again we invite you to be our eyes and ears. Conventional wisdom says that the commercial rental market is currently very tight and overpriced. We know that Divine Mind has a better idea and has a location that is exactly right for us in every respect.

As you go about your daily routines, you see and hear lots of things and Mind may work through you to inform us of what we need to know to make our move a present reality.

Let us know if you see or hear about a possible location for our new Center. You can give any Board of Trustees member a tip, but William Schulz is particularly geared up for this endeavor, since he has just recently assumed the Facilities and Equipment Portfolio.



Happy Thanksgiving



## IN SEARCH OF EFFECTIVE PRAYER



Why do some prayers seem to get results while others seem to go unanswered? People have been praying for thousands of years to scores of different gods in hundreds of languages and yet that question continues to be asked, just as it was asked by Ernest Holmes.

The difference is that Ernest Holmes studied and researched prayer most of his life and used what he learned to develop our form of prayer, spiritual mind treatment.

We have the opportunity to benefit from what Dr. Holmes learned when Rev. Frank offers "The Nature of Effective Prayer" beginning Tuesday, November 7. This eight-week class will meet each Tuesday evening from 7:00 until 9:30 at our Center.

The class will examine the entire subject of prayer. Various "classic prayers" will be analyzed to determine their common elements. This is one of the things that Dr. Holmes did in his years of study. The main focus of the class will be on spiritual mind treatment and students will have ample opportunity to learn and practice it more effectively.

Previous instruction in Science of Mind is not required and anyone may enroll in the class. If there is the appearance of a financial challenge, contact Rev. Frank well before the class begins. Arrangements can be made and no serious student will be denied instruction.

Registration materials and additional information are available at the Hospitality Desk.



## ENVELOPE ORDER AWAITING NEW ADDRESS



You may have noticed that the offering envelope that is usually included in each issue of The Word is missing this month and has been replaced by an ordinary envelope.

That's because we have deliberately held off on placing an order for new offering envelopes because we knew that in all probability our mailing address will be changing when we find our new location. Our supply of offering envelopes has finally been exhausted.

Until we have our new address, we'll continue to include an ordinary envelope in each issue of The Word to make it easier for you to communicate with us and/or to mail us your financial support when you can't be in attendance.



# Members serving Members

These paid advertisements are presented as a service to our Members and readers by the Religious Science Church of Honolulu. Publication here does not suggest nor imply a recommendation by the Religious Science Church of Honolulu of the goods and services advertised, nor is there any implied or explicit guarantee or warrantee by the Religious Science Church of Honolulu of these goods and services.

INDEPENDENT INSURANCE ADVISORS  
Annuities, Life, Long Term Care

Office 808-239-0964 Cell 808-391-7262

WILLIAM SCHULZ  
Authorized Representative  
WILLIAM@HULA.NET



47-286 Hui Iwa St. Apt. E  
Kaneohe, HI 96744

**www.HomeBusinessDynamics.net**

- ◆ Save on Gas! ◆ Healthcare!
- ◆ Save on Electricity! ◆ Financial Services!

*We Can Save You Money!*

Deb Roberts & Richard Colburn 230-4650

Visit eBay's Best Source for  
Hawaiian MuuMuu and New Designer Earrings

**www.Terrific-Stuff.com**

Your Ad  
could be here  
in the next issue  
of The Word.

## IT PAYS TO ADVERTISE

Current members of RSCH can place an ad here at the very reasonable rate of \$15.00 for three consecutive issues or \$35.00 for twelve consecutive issues.

Let our readers know what goods or services you have for sale or hire. If the customers you would like to have are patronizing someone else, perhaps it's because they don't know that they could be coming to you.

Just provide your business card and it becomes your ad. If you don't have a business card, we'll create a simple ad for you. Cut-off date for the next issue is November 15.



**Happy Thanksgiving**

## 2006 STEWARDS

Maurene Bishop  
 Monica Borden  
 Jack Chaffee  
 Madolon Chan  
 Richard Colburn  
 Ellie Dunbar  
 James Erhart  
 Anonymous  
 Anonymous  
 Jean Kimura  
 Jerry Kohn  
 May Lau  
 Stanley Lau  
 Anonymous  
 Donna Nathanson  
 Julia Postolaki  
 Paul Postolaki  
 Bonnie Prebula  
 Deb Robarts  
 Mark Romoser  
 Marijke Schaf  
 William Schulz  
 Maureen Sheedy  
 Winifred Smith  
 Loretta Snipes  
 Bob Thomas  
 Roy Updike  
 Pam Weaver (Maui)  
 R. Larry Weaver (Maui)  
 Frank White

## WHAT'S THE VALUE OF ONE MEMBER?

Ten little members standing in a line.  
 One disliked the minister, then there were nine.

Nine ambitious members offered to work late.  
 One forgot his promise, then there were eight.

Eight creative members had ideas good as heaven.  
 One lost enthusiasm, then there were seven.

Seven loyal members got into a fix.  
 They quarreled over programs, then there were six.

Six members remained with spirit and drive.  
 One moved away, then there were five.

Five steadfast members wished there were more.  
 One became indifferent, then there were four.

Four cheerful members who never disagree  
 'Til one complained of meetings, then there were three.

Three eager members! What do they do?  
 One got discouraged, then there were two.

Two lonely members, our rhyme is nearly done.  
 One joined another church, then there was one.

One faithful member was feeling rather blue;  
 Met with a neighbor, then there were two.

Two earnest members, each enrolled one more –  
 Doubling their number, then there were four.

Four determined members just couldn't wait  
 'Til each won another, then there were eight!

Eight excited members signed up sixteen more.  
 In another six verses, there'll be one thousand twenty-four!

(Note: We can't vouch for the math, but the concept is right on.)



*Happy Thanksgiving*

# Sundays at our Center Corner of King and Kalakaua

Sunday Celebrations of Life  
10:00 A.M.

1521 South King Street, Suite #301

November 5

"How Did You Pray Today?"

November 12

"Reflections"

November 19

"Say When"

November 26

"Why Me?"

## This Month's Topics

"How Did You Pray Today?"

That you pray is important. How you pray is even more significant.

"Reflections"

We hear that "what goes around comes around"  
and that "birds of a feather flock together."

Are these just silly old sayings or is it possible that they reveal a universal principle?

"Say When"

How much good can one experience and what determines the limit?

"Why Me?"

That question is often heard from people having unpleasant experiences.

It's rarely heard from individuals having good ones.

Yet the answer is the same in both instances and it can be stated in a single word.





*The Word*

Religious Science Church of Honolulu  
The Center for Positive Living  
P.O. Box 22448  
Honolulu, HI 96823



To the One-derful



Visit us on-line at:  
[HonoluluReligiousScience.org](http://HonoluluReligiousScience.org)

*Awakening Humanity to Its Spiritual Magnificence...*

## I GIVE THANKS

Divine Mind is all and knows all. I use this mind in individualization as my Mind to know:

Health in all its forms. My body is naturally healthy. This is a continuous condition.

Happiness is mine to have, enjoy, and share with others.

Enjoyable creative expression is mine with extraordinary accomplishments which give me much satisfaction.

Prosperity is the natural result of my personal creative expression. This prosperity outpictures in every area of my life.

My relationships mirror my relationship to GOD with love, harmony and understanding.

Since in GOD (MIND) there is no great or small, I claim and expect "super substantial" abundance – including money.

I give thanks that all of this is natural in my life.

AND SO IT IS!

Bonnie Prebula  
R.Sc.P.

