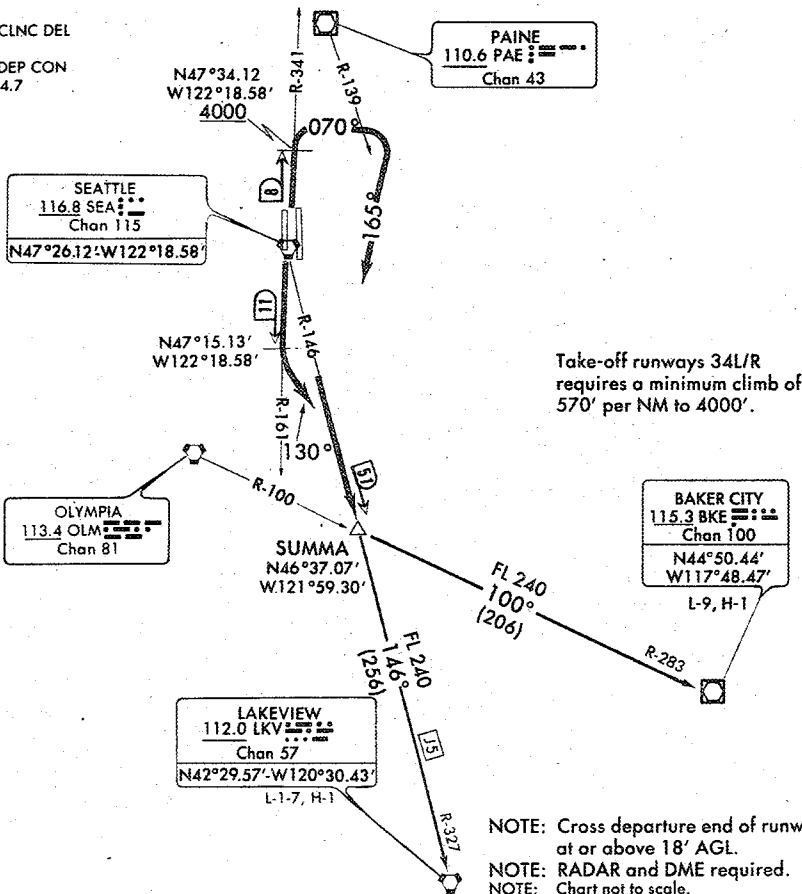


(PILOT NAV)(SUMMA6.SUMMA) 01249 SUMMA SIX DEPARTURE

SEATTLE-TACOMA INTL (SEA),
SEATTLE, WASHINGTON

SL-582 (FAA)

ATIS
118.0
SEATTLE CLNC DEL
128.0
SEATTLE DEP CON
119.2 284.7



NW-1, 6 SEPT 2001

NW-1, 6 SEPT 2001

DEPARTURE ROUTE DESCRIPTION

TAKE-OFF RUNWAYS 16L/R: Intercept and proceed via SEA R-161; at the SEA 11 DME turn left heading 130° to intercept and proceed via SEA R-146 to SUMMA INT.

TAKE-OFF RUNWAYS 34L/R: Intercept and proceed via SEA R-341, cross SEA 8 DME at or above 4000', then turn right heading 070°; cross the PAE R-139 then turn right heading 165° to intercept and proceed via the SEA R-146 to SUMMA INT.

BAKER CITY TRANSITION (SUMMA6.BKE): From over SUMMA INT via OLM R-100 and BKE R-283 to BKE VOR/DME.

LAKEVIEW TRANSITION (SUMMA6.LKV): From over SUMMA INT via SEA R-146 and LKV R-327 to LKV VORTAC.