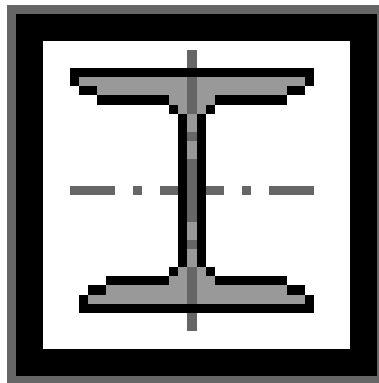


Valentini Bernhard

Smart-Section V2.50

Copyright by Ulrich Christian and Valentini Bernhard



Calculation routine for cross section values, stress
distribution and the core of a cross section or composite
cross section on TI89, TI89-Titanium, TI92+, V200

Contents

1	Introduction	1
2	Features	1
3	Requirements	2
4	Recommendations	2
5	Files	2
6	Installation	2
7	Starting the program	3
8	General Notes	3
9	Notes and warnings	3
10	Menu structure	5
11	File	5
11.1	Save	5
11.2	Open	5
11.3	Clear input	5
11.4	Exit	5
12	System	6
12.1	Node	6
12.2	Circle	7
12.3	Internal forces	8
12.4	Composite section	9
13	Generator	11
13.1	□-Profiles	11
13.2	▣-Profiles	12
13.3	I-Profiles	12
13.4	L-Profiles	13
13.5	T-Profiles	13
13.6	U-Profiles	14
13.7	Z-Profiles	14
13.8	⊙-Profiles	15
14	View	15

15 Results	16
15.1 Section details	16
15.2 Stress distribution	19
15.3 Core of section	20
16 Edit	21
16.1 List	21
16.2 Edit	21
16.3 Delete	21
17 Info	21
17.1 Help	21
17.2 About	21
18 Developer	22
19 Thanks	22
20 History	23

1 Introduction

Smart-Section is a program for TI89, TI89-Titanium, TI92+ and V200 which calculates cross section values, stress distribution and the core of a cross section or composite cross section. It provides graphic input/output and a tabular view of the results.

2 Features

- calculation of polygonal cross sections and composite cross sections
- additional use of circle elements
- section generator for cross section types that are often used
- stress distribution of the cross section
- core of the cross section
- input via dialog boxes and graphical or tabular output of the result
- scroll and zoomable drawing area
- scroll and zoomable table
- calculated values:
 - area
 - perimeter of section
 - static moment around y- and z-axis
 - y- and z-coordinate of the center of area
 - angle between the coordinate system and the principal axis
 - moment of inertia around y- and z-axis
 - moment of deviation
 - maximum and minimum moment of inertia
 - radius of gyration on principal axis
 - minimum resistive torque around principal axis
 - point of intersection of the zero-line and the principal-axis
 - stress in x-direction
 - coordinates of the core of the cross section

3 Requirements

- TI89, TI89-Titanium, TI92+ or V200 with AMS-Version 2.05 or higher
- 80kB free RAM
- Program “HW3Patch“ to run the program on TI89-Titanium
(You can download it from Kevin Kofler's homepage
<http://kevinkofler.cjb.net>.)

4 Recommendations

- Program “Auto Alpha-Lock Off“ from Kevin Kofler (<http://kevinkofler.cjb.net>)
only for TI89 and TI89-Titanium

5 Files

Smart-Section contains following files (for TI89/TI89-Titanium, TI92+, V200):

1. launcher:
 - smartsec.(89z, 9xz, v2z)
2. dll:
 - ssec.(89y, 9xy, v2y)
3. text file:
 - ssechelp.(89t, 9xt, v2t)
4. pictures:
 - ssecp01 - ssecp08.(89i, 9xi, v2i)

6 Installation

Transfer all files of your calculator type via link cable to your calculator and archive following files:

1. ssec.dll
2. ssechelp.text
3. ssecp01.pic - ssecp08.pic

- that's all. All files must be in one folder.

When you have a TI89-Titanium install the program "HW3Patch" on your calculator.

When you have a TI89 or TI89-Titanium you can install the program "Auto Alpha-Lock Off" to avoid pressing the alpha button every time you make an input.

7 Starting the program

Write in the command line of the TI-application "Home" the expression "smartsec()".

8 General Notes

The handling of the program is made as easy as possible, so the input of a cross section can be done very quickly.

Negative numbers you have to input with the "(-)" sign next to the "." at the bottom of the numeric block. You should never make an input with the sign minus "-".

The numbering of the nodes is pretexted by the program and should NEVER be changed.

NO INPUT IS AUTOMATICALLY SET "0".

9 Notes and warnings

This program is distributed to help students of civil engineering and other technical fields, but WITHOUT ANY WARRANTY. (The authors make no representations or warranties about the suitability of the software, either express or implied. The authors are not liable for any damages suffered as a result of using or distributing this software.) Every kind of commercial use is forbidden without the permission of the authors.

Certainly there are several bugs within the program. For this reason it's useful to make a backup of your calculator before using it.

Wrong operation can lead to a complete crash of the calculator's system which can only be repaired with a reset (on+2nd+hand). The consequence is that all data on your calculator which is not archived could be deleted.

Therefore you should be careful, especially at the start of using this program.

If you have comments, bug reports or anything else, email Valentini Bernhard (bernhard.valentini@smart-programs.org) or visit the forum on our web site <http://www.smart-programs.org/>.

10 Menu structure

File	Create	Generator	View	Results	Edit	Info
New	Node	[] - Profile		Section details	List	Help
Save	Circle	[o] - Profile		Stress distribution	Edit	About
Open	Internal forces	I - Profile		- graphic	Delete	
Exit	Composite section	L - Profile		- tabular		
		T - Profile		Core of section		
		U - Profile		- graphic		
		Z - Profile		- tabular global		
		O - Profile		- tabular principal		

Table 1: Menu structure

11 File

11.1 Save

The name of the savefile can't have more signs than eight.

From Smart-Section V2.00 on savefiles have the ending ".ssec".

11.2 Open

The program now searches for all files with the ending ".ssec". Savefiles from Smart-Section V2.00 downward can't be loaded anymore.

11.3 Clear input

Clears all data (nodes, circles, internal forces and results).

11.4 Exit

Exits the program.

12 System

12.1 Node

Global system of coordinates [mm] (right hand system):

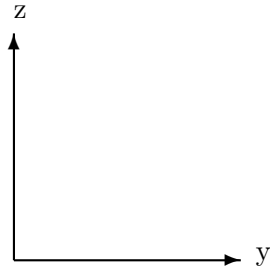


Figure 1: *Global system of coordinates*

The direction you have to enter the nodes is COUNTER-CLOCKWISE. The section will be closed automatically. If you want to enter a hole you have to enter the nodes clockwise.

You can edit the nodes by overwriting them.

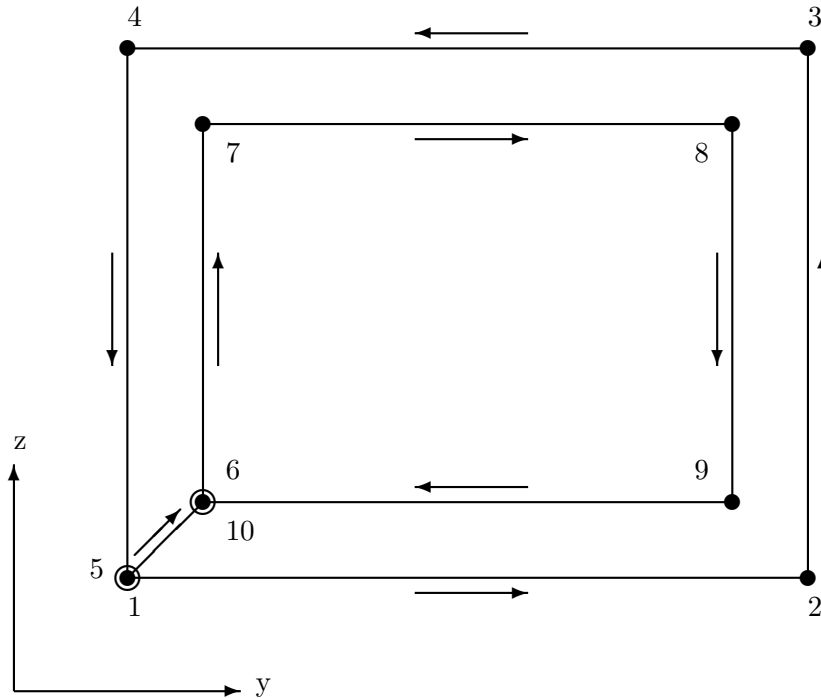


Figure 2: *Cross section with a hole*

12.2 Circle

The node you have to choose is the point of intersection of the two tangents of the circle and NOT the center of the circle.

The circle is approximated by nodes every 10° , so the nodes will be renumbered automatically. For a clearer graphic the circle's nodes will never be inscribed. The error of the area through this approximation is about 0,5 percent.

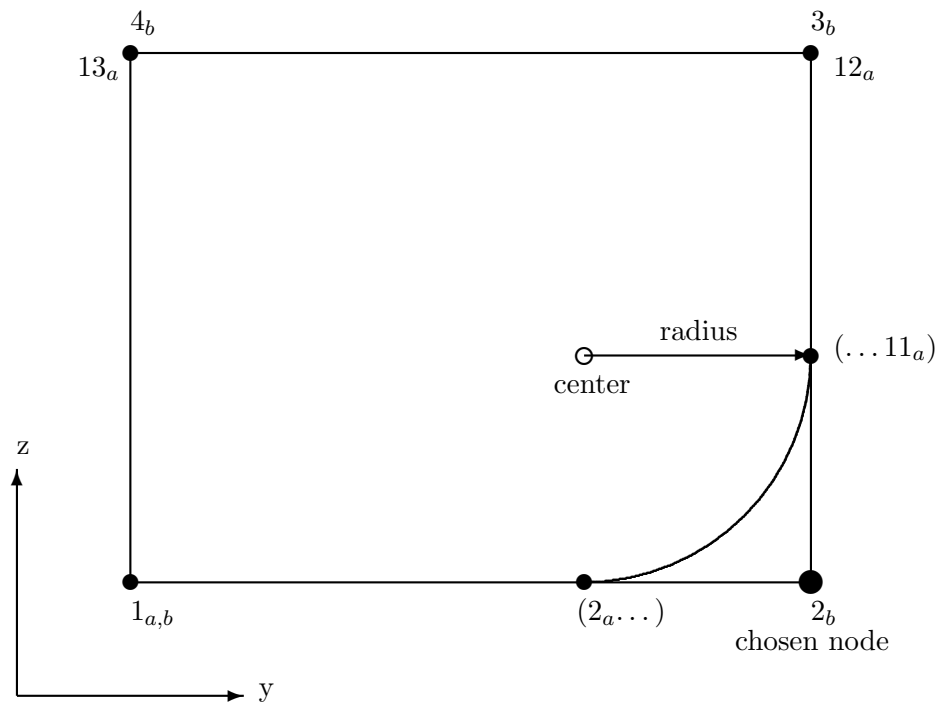


Figure 3: *Circle input*

$node_b$... before entering circle

$node_a$... afterwards

• ... inscribed visible nodes

○ ... not inscribed invisible nodes

12.3 Internal forces

For the stress distribution you have to enter following internal forces:

- N ... axial force in x-direction [N]
- M_1 ... moment around principal y' -axis [Nmm]
- M_2 ... moment around principal z' -axis [Nmm]

They will be deleted every time you change something.

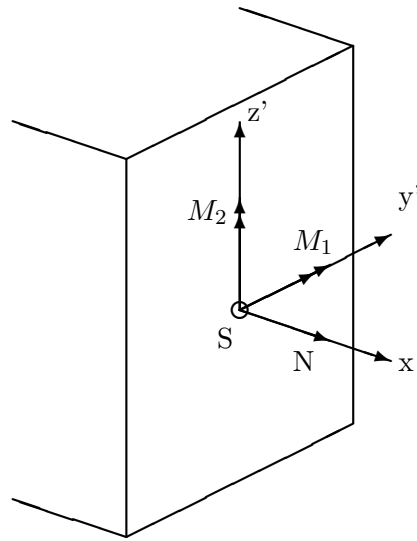


Figure 4: *Internal forces definition*

12.4 Composite section

For each composite cross section part you have to input the elastic modulus E [N/mm^2].

The values of the composite cross section are calculated on the fictive (E-modulus) level of the composite section part “1”. For more information take a look at section 15.1.

Example of an input of a composite cross section:

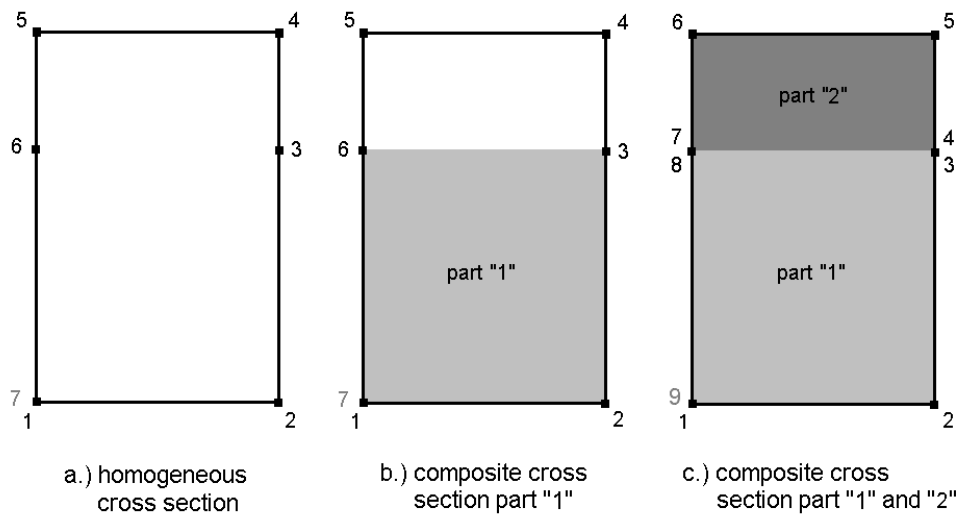


Figure 5: *Composite cross section input*

- step 1:
input cross section with 6 nodes (“1-6”). node number “7” will generated automatically and is invisible. [picture a.)]
- step 2:
input composite cross section part “1”:
After the input of the E-modulus the input boundary nodes are “1, 2, 3, 6, 7”. [picture b.)]
- step 3:
input composite cross section part “2”:
After the input of the E-modulus the input boundary nodes are “3, 4, 5, 6”. [picture b.)]
The node “3” is split up automatically into node “3” and “4”. All nodes with a higher node number will be increased by one. Then the former node “6” (now node “6”) is split up automatically into node “7”

and “8“. Again all nodes with a higher node number will be increased by one. [picture c.)]

During the input of the composite cross section nodes the program will mark every node you choose. So invisible nodes shouldn't be forgotten too easily. EVERY node has to be part of a composite section part - so don't forget one. The invisible last node of the cross section must be chosen too. In the node list you can see which node is already part of the composite cross section.

13 Generator

The section generator was made for cross section types that are often used. They are:

- \square -Profiles
- \boxminus -Profiles
- I-Profiles
- L-Profiles
- T-Profiles
- U-Profiles
- Z-Profiles
- \odot -Profiles

You can edit the nodes of the profiles afterwards in menu “System \rightarrow Section node“ like the input of a new node.

The radius of all profiles except the \odot -profiles can be zero.

13.1 \square -Profiles

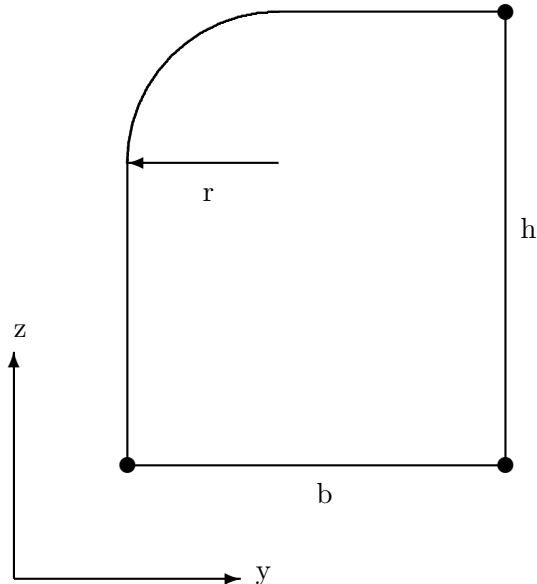
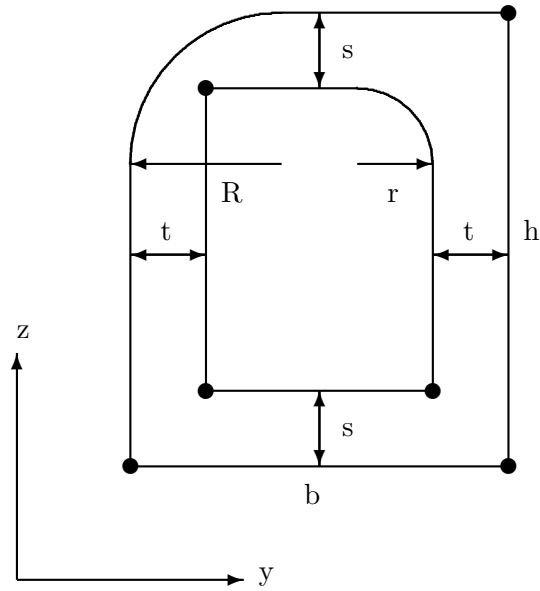


Figure 6: \square -Profiles

13.2 \square -ProfilesFigure 7: \square -Profiles

13.3 I-Profiles

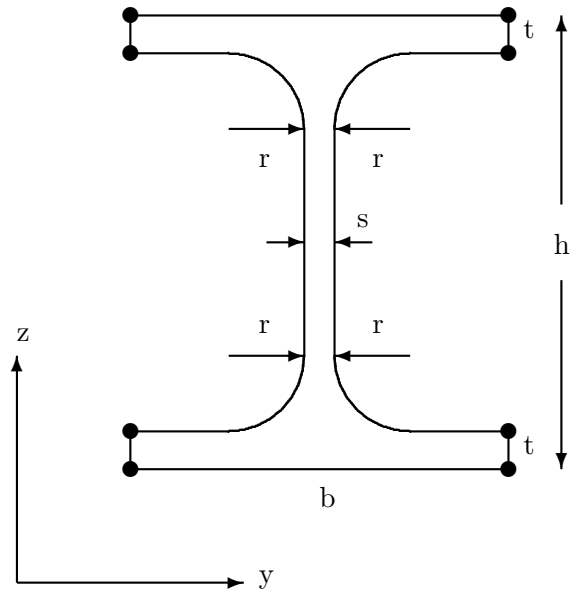
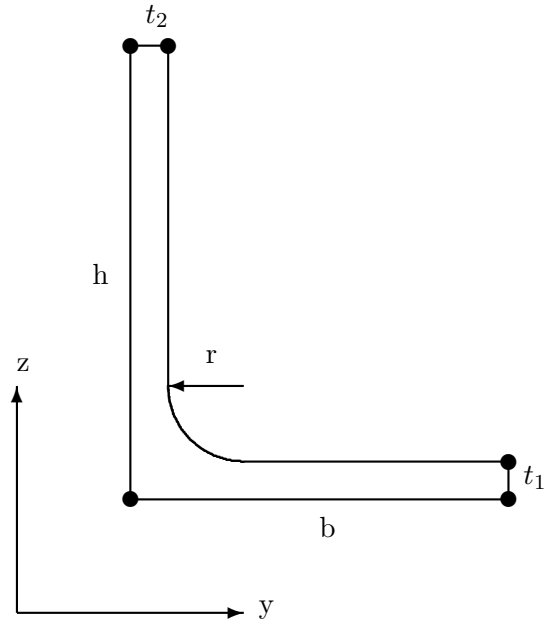
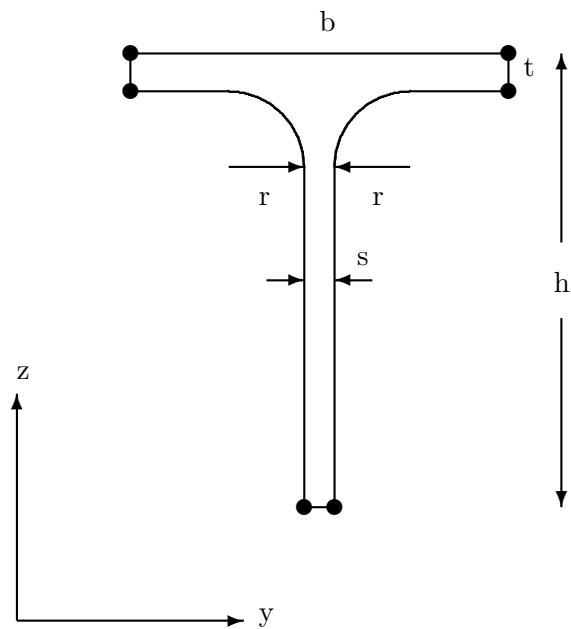


Figure 8: I-Profiles

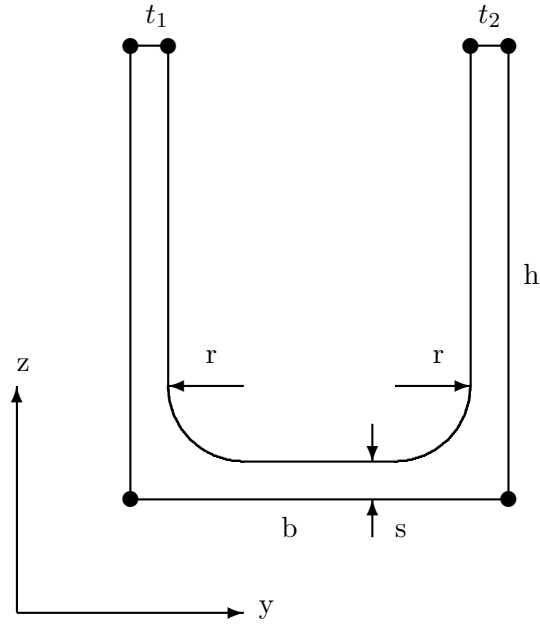
13.4 L-Profiles

Figure 9: *L-Profiles*

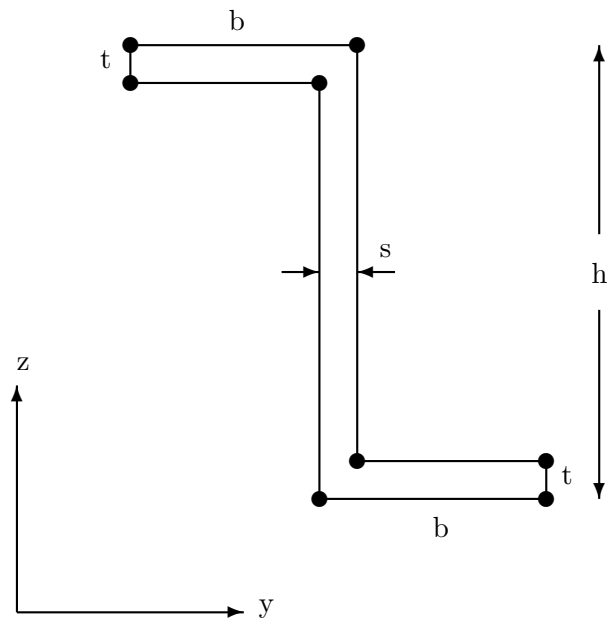
13.5 T-Profiles

Figure 10: *T-Profiles*

13.6 U-Profiles

Figure 11: *U-Profiles*

13.7 Z-Profiles

Figure 12: *Z-Profiles*

13.8 ☉-Profiles

The outer radius "R" must always be larger than the inner radius "r". You can make a full circle without hole when you enter "0" for "r".

The circle will be approximated by a polygon with 72 nodes (5° division). The error of the area through this approximation is about 0,13 percent and the error of the moment of inertia about 0,25 percent.

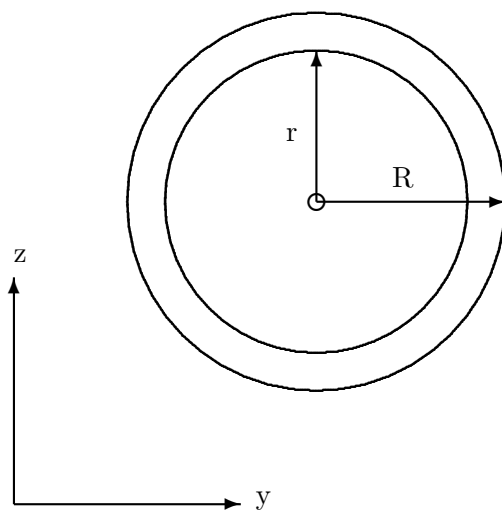


Figure 13: ☉-Profiles

14 View

When you enter the view-mode you can scroll and zoom the drawing area. Only in the view-routine and in the numeric output four color grayscale is turned on.

Controls:

- $\uparrow\downarrow\leftarrow\rightarrow$... scroll in one of these directions
- $+/-$... zoom in and out
- 2nd ... center the section to the area
- Esc ... cancel the view-mode

15 Results

15.1 Section details

The tabular outputs (lists, section details, stress distribution and core of section) are scroll and zoomable.

Controls:

- $\uparrow\downarrow\leftarrow\rightarrow$... scroll the table in one of these directions
- $+/-$... zoom the table (and font)
- 2nd ... move to row number one
- Esc ... cancel the table

Principal axis definition:

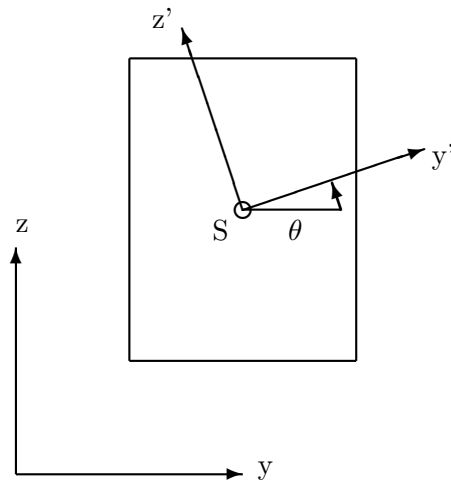


Figure 14: *Principal axis definition*

If a composite cross section is input, the section details will show the results of the homogeneous cross section (only one material) and the composite cross section (different materials).

The values of the composite cross section are on the fictive (E-modulus) level of the composite section part "0". So all values of the composite section parts "0" to "i" are multiplied with the factor n_i .

- E ... elastic modulus of the composite cross section part $[N/mm^2]$

$$n_i = \frac{E_i}{E_0}. \quad (1)$$

Used formulas for the section details:

- A ... area $[mm^2]$

$$A = \int_A dA \quad (2)$$

- U ... perimeter of section (outer and inner with all connecting lines) $[mm]$

$$U = \oint_{border} ds \quad (3)$$

- S_y ... static moment around y-axis $[mm^3]$

$$S_y = \int_A z dA \quad (4)$$

- S_z ... static moment around z-axis $[mm^3]$

$$S_z = \int_A y dA \quad (5)$$

- y_S ... global y-coordinate of the center of area $[mm]$

$$y_S = \frac{S_z}{A} \quad (6)$$

- z_S ... global z-coordinate of the center of area $[mm]$

$$z_S = \frac{S_y}{A} \quad (7)$$

- Θ ... angle between the global coordinate system and the principal y'-axis $[rad]$

$$\Theta = \frac{1}{2} \arctan \left(-\frac{2I_{yz}}{I_y - I_z} \right) \quad (8)$$

- I_y ... moment of inertia around y-axis $[mm^4]$

$$I_y = \int_A z^2 dA \quad (9)$$

- I_z ... moment of inertia around z-axis [mm^4]

$$I_z = \int_A y^2 dA \quad (10)$$

- I_{yz} ... moment of deviation [mm^4]

$$I_{yz} = \int_A yz dA \quad (11)$$

- I_1 ... maximum moment of inertia [mm^4]

$$I_1 = \frac{I_y + I_z}{2} + \sqrt{\left(\frac{I_y - I_z}{2}\right)^2 + I_{yz}^2} \quad (12)$$

- I_2 ... minimum moment of inertia [mm^4]

$$I_2 = \frac{I_y + I_z}{2} - \sqrt{\left(\frac{I_y - I_z}{2}\right)^2 + I_{yz}^2} \quad (13)$$

- i_1 ... radius of gyration on z'-axis [mm]

$$i_1 = \sqrt{\frac{I_1}{A}} \quad (14)$$

- i_2 ... radius of gyration on y'-axis [mm]

$$i_2 = \sqrt{\frac{I_2}{A}} \quad (15)$$

- n_1 ... point of intersection of the zero-line and the y'-axis [mm]

$$n_1 = -\frac{i_2^2}{e_1} \quad (16)$$

$$e_1 = -\frac{M_2}{N} \quad (17)$$

- n_2 ... point of intersection of the zero-line and the z'-axis [mm]

$$n_2 = -\frac{i_1^2}{e_2} \quad (18)$$

$$e_2 = \frac{M_1}{N} \quad (19)$$

- $W_1^{(+z')}$... minimum resistive torque around y' -axis with positive z' value [mm^3]
 $z'_{pos,max}$... maximum positive coordinate on the principal z' -axis of one node [mm]

$$W_1^{(+z')} = \frac{I_1}{z'_{pos,max}} \quad (20)$$

- $W_1^{(-z')}$... minimum resistive torque around y' -axis with negative z' value [mm^3]
 $z'_{neg,max}$... maximum negative coordinate on the principal z' -axis of one node [mm]

$$W_1^{(-z')} = \frac{I_1}{z'_{neg,max}} \quad (21)$$

- $W_2^{(+y')}$... minimum resistive torque around z' -axis with positive y' value [mm^3]
 $y'_{pos,max}$... maximum positive coordinate on the principal y' -axis of one node [mm]

$$W_2^{(+y')} = \frac{I_2}{y'_{pos,max}} \quad (22)$$

- $W_2^{(-y')}$... minimum resistive torque around z' -axis with negative y' value [mm^3]
 $y'_{neg,max}$... maximum negative coordinate on the principal y' -axis of one node [mm]

$$W_2^{(-y')} = \frac{I_2}{y'_{neg,max}} \quad (23)$$

15.2 Stress distribution

The stress distribution from the internal forces will be calculated and shown for each node.

In the graphic output of the stress distribution the view-mode (section 14) is automatically turned on.

Used formula for the stress distribution:

- σ_x ... stress in x-direction [N/mm^2]
 y' ... coordinate on the principal y' -axis [mm]
 z' ... coordinate on the principal z' -axis [mm]

$$\sigma_x = \frac{N}{A} + \frac{M_1}{i_1^2 \cdot A} \cdot z' - \frac{M_2}{i_2^2 \cdot A} \cdot y' \quad (24)$$

15.3 Core of section

The core of the section is that area where a axial force has to be placed, when the section should only have tensile or compression forces. It is calculated by all zero-lines which touch the cross section.

The tabular output will be done in the global coordinate system ("tabular global") or in the principal-axis coordinate system ("tabular principal").

The calculation of a full circle can take up to 20 seconds and a circle with hole up to 30 seconds on TI89 and TI92+. So you should consider this when you start the calculation, because there is no option to stop it.

In the graphic output of the core of section the view-mode (section 14) is automatically turned on.

Used formula for the core of the section:

- e_1 ... coordinate on the principal y'-axis [mm]
 y'_N ... point of intersection of the principal y'-axis with a tangent of the section [mm]

$$e_1 = -\frac{i_2^2}{y'_N} \quad (25)$$

- e_2 ... coordinate on the principal z'-axis [mm]
 z'_N ... point of intersection of the principal z'-axis with a tangent of the section [mm]

$$e_2 = -\frac{i_1^2}{z'_N} \quad (26)$$

16 Edit

16.1 List

The input nodes, circles, composite cross sections and internal forces are listed there.

The controls are described in section 15.1.

16.2 Edit

You can edit all input nodes, composite cross sections and internal forces with this routine.

16.3 Delete

You can delete all input nodes with this routine.

When you have deleted a node, the structure will automatically be renumbered.

17 Info

17.1 Help

Shows a list of short cuts used in section 15.1.

Explains how to input nodes, circles, internal forces and a composite cross section.

Shows the control-keys for the view-mode (section 14) and tables (section 15.1).

17.2 About

Prints some information about the program.

18 Developer

- Valentini Bernhard (bernhard.valentini@smart-programs.org)

Web site: <http://www.smart-programs.org/>

19 Thanks

- Ulrich Christian as a former developer
- the TIGCC Team for making it possible to program in C (<http://ticalc.ticalc.org>)
- the TICT (TI-Chess Team) for their ExtGraph library (<http://tict.ticalc.org>)
- Pablo Lasheras for the Spanish translation
- João Pedro Caiado for the Portuguese translation
- Raoul Aguirr for the French translation
- Elisabeth Nägele for the proof-reading (of Smart-Section V1.00)
- all beta testers (especially Luigi Pagano)

20 History

- Smart-Section V2.50:
 - 28.08.2005 - update
 - * Greece characters implemented
 - * tabular output improved
 - * French version available (translated by: Raoul Aguirre)
 - * manual actualized
- Smart-Section V2.50 Beta 2:
 - 27.04.2005 - update
 - * all numberings changed (start now with “1“)
 - * edit and delete function added
 - * file size optimized
 - * tabular output improved
 - * graphic routines improved
 - * menus new arranged
 - * faster border find routine
 - * error handling improved
 - * Portuguese version available (translated by: João Pedro Caiado)
 - * manual actualized
- Smart-Section V2.01:
 - 29.10.2004 - update
 - * bug with additional circles fixed
(found by: Niklas Fritz)
 - * memory lag in tabular output of the results fixed
 - * Spanish version available (translated by: Pablo Lasheras)
- Smart-Section V2.00:
 - 21.09.2004 - update
 - * bugs in core and perimeter of section fixed
 - * composite cross section added
 - * pictures for section generator added
 - * new save and load routine
 - * new help
- Smart-Section V1.30:

- 29.08.2004 - update
 - * calculation error with resistive torques fixed
(found by: Luigi Pagano)
 - * parameters "minimum resistive torque around principal axis" modified
 - * additional parameters "perimeter of section" added
 - * help added
 - * input lists for nodes, circles and internal forces
- Smart-Section V1.20:
 - 15.08.2004 - update
 - * scroll and zoomable table in four color grayscale
 - * additional parameters "maximum resistive torque around principal axis" added
 - * graphic zero-line
- Smart-Section V1.10a:
 - 13.06.2004 - update
 - * calculation error with internal loads which were not between -32768N(mm) and 32767N(mm) fixed
(values were restricted to integer instead of double)
(found by: Bernhard Valentini)
- Smart-Section V1.10:
 - 07.06.2004 - update
 - * new and faster drawing routine
 - * scroll and zoomable drawing area in four color grayscale
 - * much faster core calculation routine
 - * English and German version available
- Smart-Section V1.00:
 - 08.02.2004 - final release
 - * new section types added to the section generator
 - * stress distribution added
 - * core of section added
- Smart-Section V0.01:
 - 03.01.2004 - first release

References

- [Mang/Hofstetter (2000)] H. Mang and G. Hofstetter, *Festigkeitslehre*, Springer Verlag, Wien, 2000.
- [Falter (1992)] B. Falter, *Statikprogramme für Personalcomputer*, 4.Auflage, Werner Ingenieur Texte, Düsseldorf, 1992.

List of Figures

1	<i>Global system of coordinates</i>	6
2	<i>Cross section with a hole</i>	6
3	<i>Circle input</i>	7
4	<i>Internal forces definition</i>	8
5	<i>Composite cross section input</i>	9
6	\square -Profiles	11
7	\boxplus -Profiles	12
8	<i>I-Profiles</i>	12
9	<i>L-Profiles</i>	13
10	<i>T-Profiles</i>	13
11	<i>U-Profiles</i>	14
12	<i>Z-Profiles</i>	14
13	\odot -Profiles	15
14	<i>Principal axis definition</i>	16

List of Tables

1	<i>Menu structure</i>	5
---	---------------------------------	---