

Red blazed trail system including Needle Rock, Boardwalk and Azalea Cascade area, westward to Mid Laurel Bridge. Multiple routes through the rock outcroppings. Easy Hiking

QUARRY TRAIL (W) (black on map)

Quarry Trail, from Store westward to blacktop near Original Park Entrance. Moderate hiking some ups and downs, 3 miles

YELLOW TRAIL (O) (coral on map)

Yellow Trail, From Campground across from camp site 78 to Orange Trail near Laurel Creek, easy 0.4 miles

SILVER TRAIL (S) (black on map)

Silver Trail, from Store westward to Campground, then westward to parking area on road west of Campground. Easy hiking 1 mile

GOLD TRAIL (NB) (coral on map)

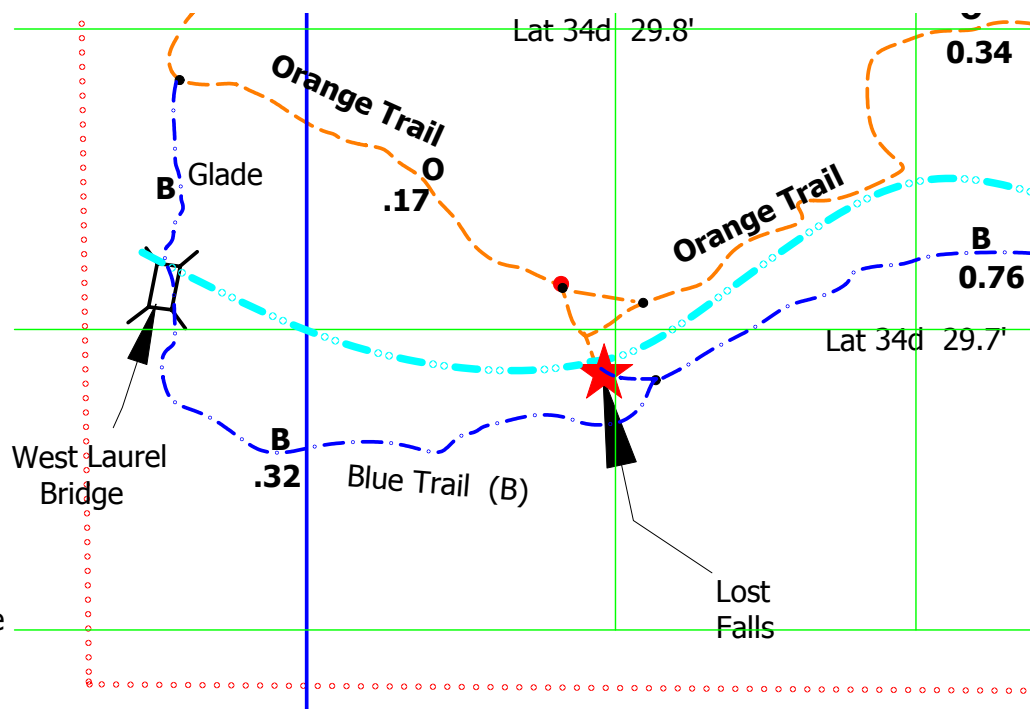
Gold Trail, 250 yards, from back of Store westward to Campground, near campsite 57. follows unused road. No Blaze.

BIKE TRAIL (NB)

Trail across road from entrance of Campground westward to closed service road. 0.3 miles, bikes permitted.

DST (Desoto Scout Trail) (Y) (coral on map)

DeSoto Scout Trail (DST). Follows Little River from Highway 165 near Alpine Camp south and then east past Cabin 18. Strenuous 1.9 miles Faded blazes in some places. Walk on top of CCC wall for 30 yards. Portions can be hiked via access from other trails.



Sharp TRAIL (W) (black on map) 0.5 miles

Trail from J with Quarry Tr across hwy 89, S of Rock Bridge Church, east to Sharp Creek, then follows Sharp Creek to J with DST. Scenic rock formations, Stream views

CABIN TRAIL (W) 1.4 mile (W blaze, blue on map)

North trailhead at SE corner of Picnic Pavillion. Continue So below cabins to Lodge Complex. Pass through Lodge Complex, and pick up trail again. continue on So to Junction with bike trail 100 yds east of Cabin 19.

CONNECTOR TRAILS

Several connector trails joins the trail system below the cabins and Lodge. Marked Black on map

FLC

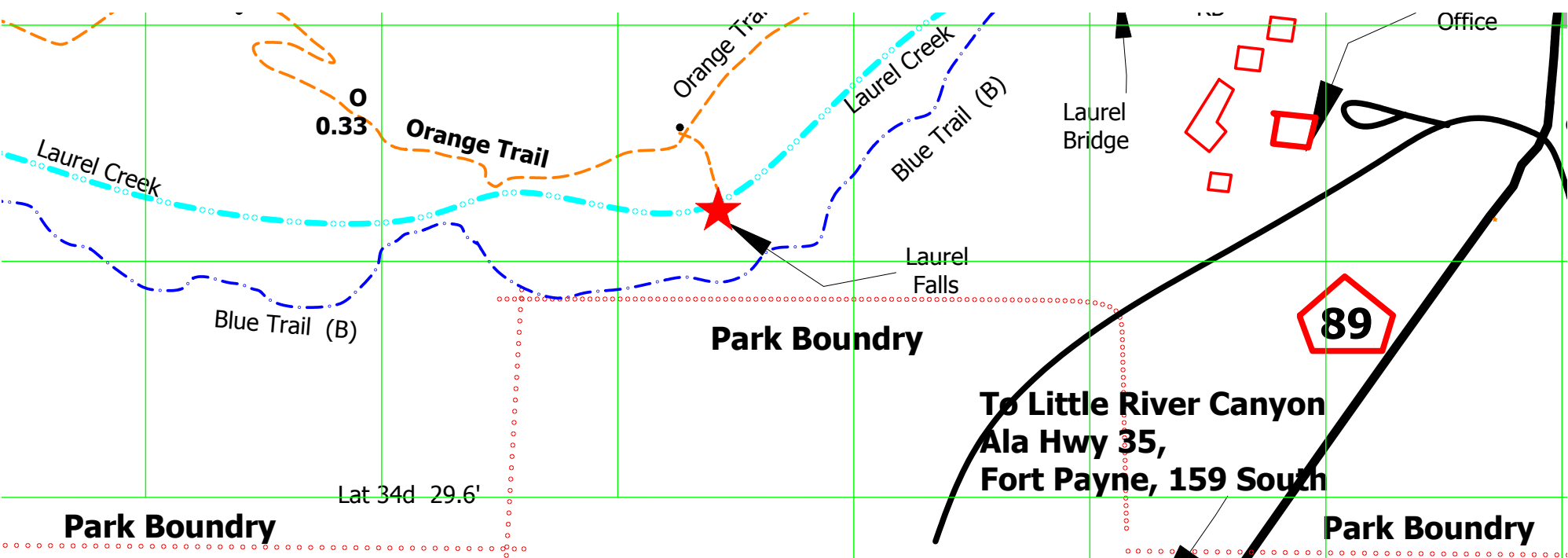
Start:
Runs
Ends

FALL

Sho
belc
Lod

SLAN

De
0.2
roc



LOWER TRAIL (B) 0.5 Mile (black on map)
Starts at J with Cabin Tr about 260 Yds S of Indian Falls.
Runs South parallel and between Cabin Tr and DST.
Ends at J with Cabin Tr. below the Lodge.

S TRAIL 0.1 mile
Starts below Lodge Complex. Parallel and
below Cabin Trail. Scenic cliffs and view of
Laurel Falls. Accessed from Cabin Trail

WATER ROCK TRAIL (B) (black on map)
Starts from Cabin trail near cabin 18 approx
0.2 mile to join with DST Trail. Interesting
rock formations.

LEGEND

ROADS

STREAMS

TRAILS

PARK BOUNDARY

PARK STRUCTURES

ELEVATION (ft)

NORTH

DISTANCE BETWEEN JUNCTIONS. Miles (0.3)

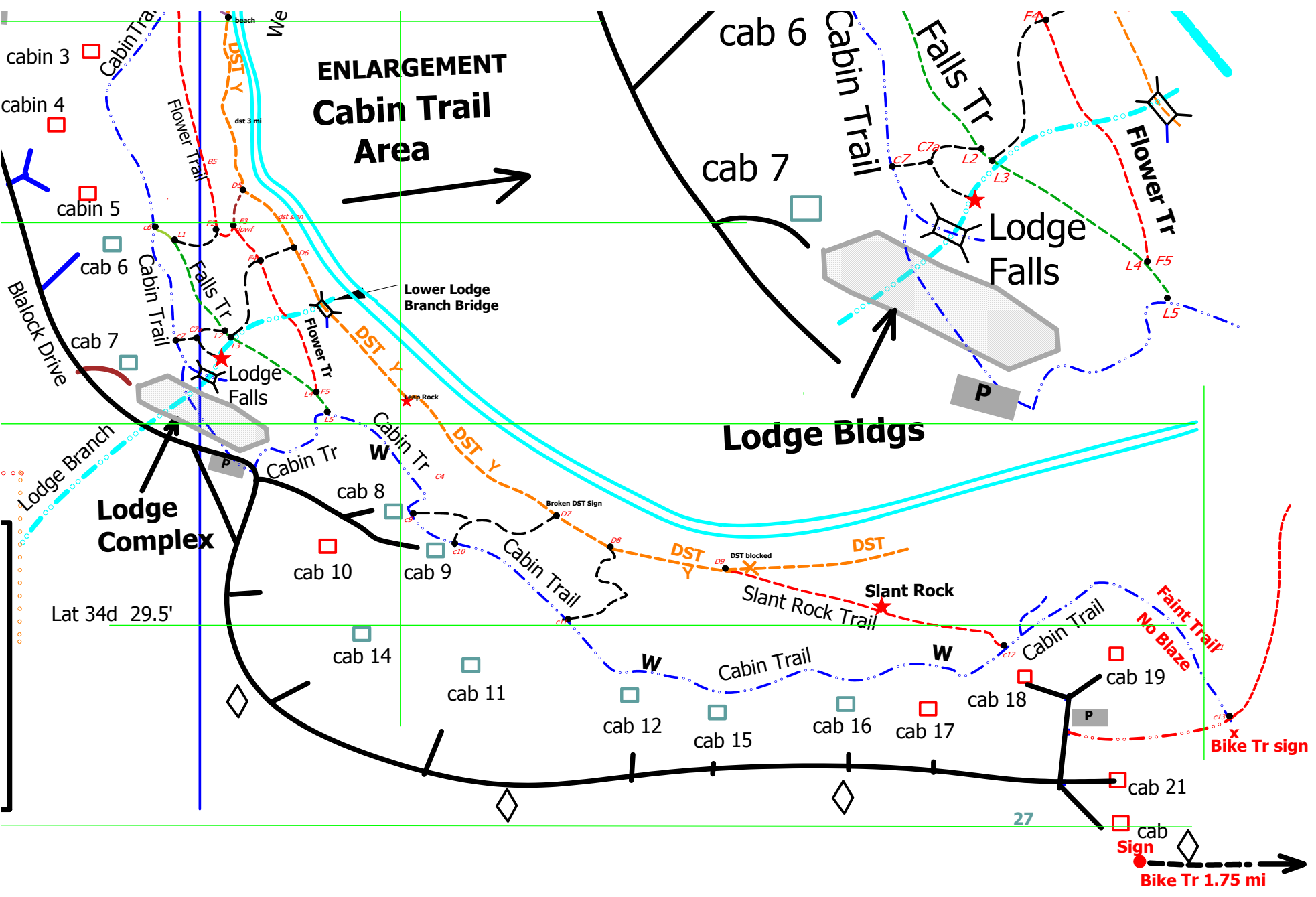
SPECIAL FEATURES

TRAIL JUNCTIONS

PARKING

GATES

BICYCLES PERMITTED



ENLARGEMENT
Cabin Trail
Area

Lodge Bldgs

Lodge Falls

Lodge Complex

Flower Tr

Falls Tr

Cabin Trail

Cabin Trail

Cabin Trail

Cabin Trail

Faint Trail

Slant Rock Trail

Bike Tr sign

Sign

Bike Tr 1.75 mi

Lat 34d 29.5'

27

Lower Lodge Branch Bridge

Lodge Falls

Blalock Drive

Cabin Tr

Flower Tr

Falls Tr

Cabin Tr

Cabin Tr

Cabin Tr

Cabin Tr

Cabin Tr

Cabin Tr

Cabin Tr

Cabin Tr

Cabin Tr

Cabin Tr

Cabin Tr

Cabin Tr

Cabin Tr

Cabin Tr

Cabin Tr

Cabin Tr

Cabin Tr

Cabin Tr

Cabin Tr

Cabin Tr

Cabin Tr

Cabin Tr

Cabin Tr

Cabin Tr

Cabin Tr

Cabin Tr

Cabin Tr

Cabin Tr

Cabin Tr

Cabin Tr

Cabin Tr

Cabin Tr

Cabin Tr

Cabin Tr

Cabin Tr

Cabin Tr

Cabin Tr

Cabin Tr

Cabin Tr

Cabin Tr

Cabin Tr

Cabin Tr

Cabin Tr

Cabin Tr

Cabin Tr

Cabin Tr

Cabin Tr

Cabin Tr

Cabin Tr

Cabin Tr

Cabin Tr

Cabin Tr

Cabin Tr

Cabin Tr

Cabin Tr

Cabin Tr

Cabin Tr

Cabin Tr

Cabin Tr

Cabin Tr

Cabin Tr

Cabin Tr

Cabin Tr

Cabin Tr

Cabin Tr

Cabin Tr

Cabin Tr

Cabin Tr

Cabin Tr

Cabin Tr

Cabin Tr

Cabin Tr

Cabin Tr

Cabin Tr

Cabin Tr

Cabin Tr

Cabin Tr

Cabin Tr

Cabin Tr

Cabin Tr

Cabin Tr

Cabin Tr

Cabin Tr

Cabin Tr

Cabin Tr

Cabin Tr

Cabin Tr

Cabin Tr

Cabin Tr

Cabin Tr

Cabin Tr

Cabin Tr

Cabin Tr

Cabin Tr

Cabin Tr

Cabin Tr

Cabin Tr

Cabin Tr

Cabin Tr

Cabin Tr

Cabin Tr

Cabin Tr

Cabin Tr

Cabin Tr

Cabin Tr

Cabin Tr

Cabin Tr

Cabin Tr

Cabin Tr

Cabin Tr

Cabin Tr

Cabin Tr

Cabin Tr

Cabin Tr

Cabin Tr

Cabin Tr

Cabin Tr

Cabin Tr

Cabin Tr

Cabin Tr

Cabin Tr

Cabin Tr

Cabin Tr

Cabin Tr

Cabin Tr

Cabin Tr

Cabin Tr

Cabin Tr

Cabin Tr

Cabin Tr

Cabin Tr

Cabin Tr

Cabin Tr

Cabin Tr

Cabin Tr

Cabin Tr

Cabin Tr

Cabin Tr

Cabin Tr

Cabin Tr

Cabin Tr

Cabin Tr

Cabin Tr

Cabin Tr

Cabin Tr

Cabin Tr

Cabin Tr

Cabin Tr

Cabin Tr

Cabin Tr

Cabin Tr

Cabin Tr

Cabin Tr

Cabin Tr

Cabin Tr

Cabin Tr

Cabin Tr

Cabin Tr

Cabin Tr

Cabin Tr

Cabin Tr

Cabin Tr

Cabin Tr

Cabin Tr

Cabin Tr

Cabin Tr

Cabin Tr

Cabin Tr

Cabin Tr

Cabin Tr

Cabin Tr

Cabin Tr

Cabin Tr

Cabin Tr

Cabin Tr

Cabin Tr

Cabin Tr

Cabin Tr

Cabin Tr

Cabin Tr

Cabin Tr

Cabin Tr

Cabin Tr

Cabin Tr

Cabin Tr

Cabin Tr

Cabin Tr

Cabin Tr

Cabin Tr

Cabin Tr

Cabin Tr

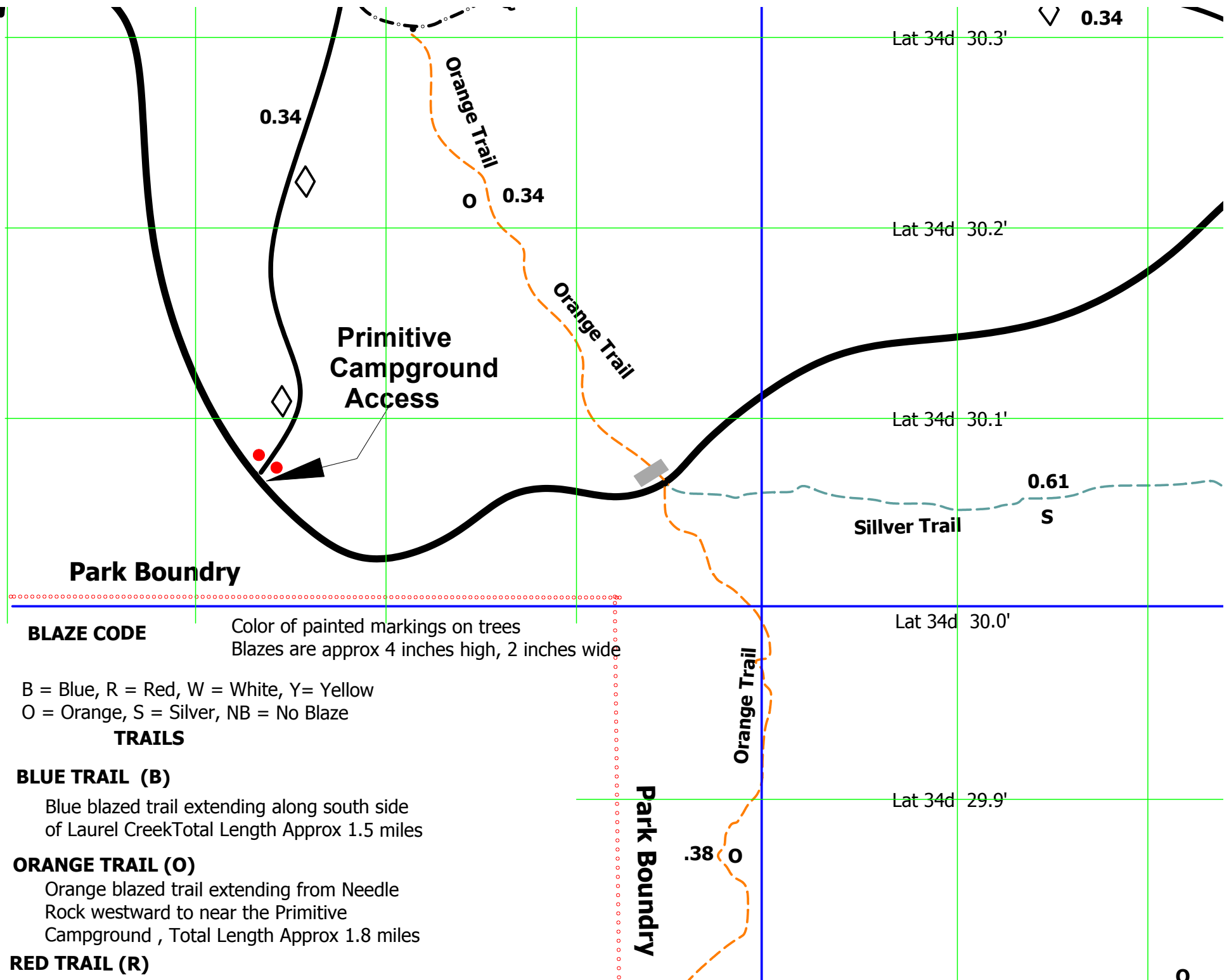
Cabin Tr

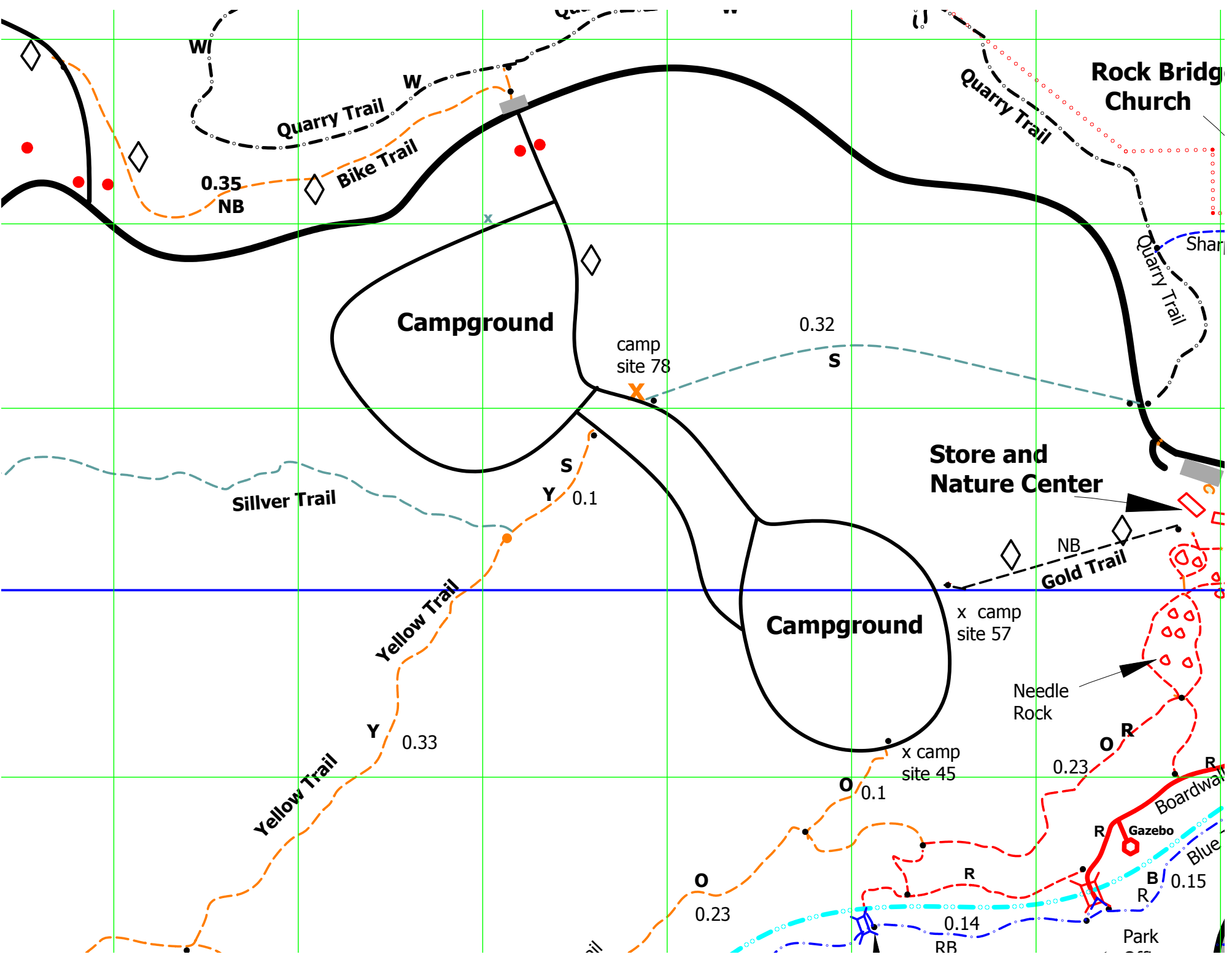
Cabin Tr

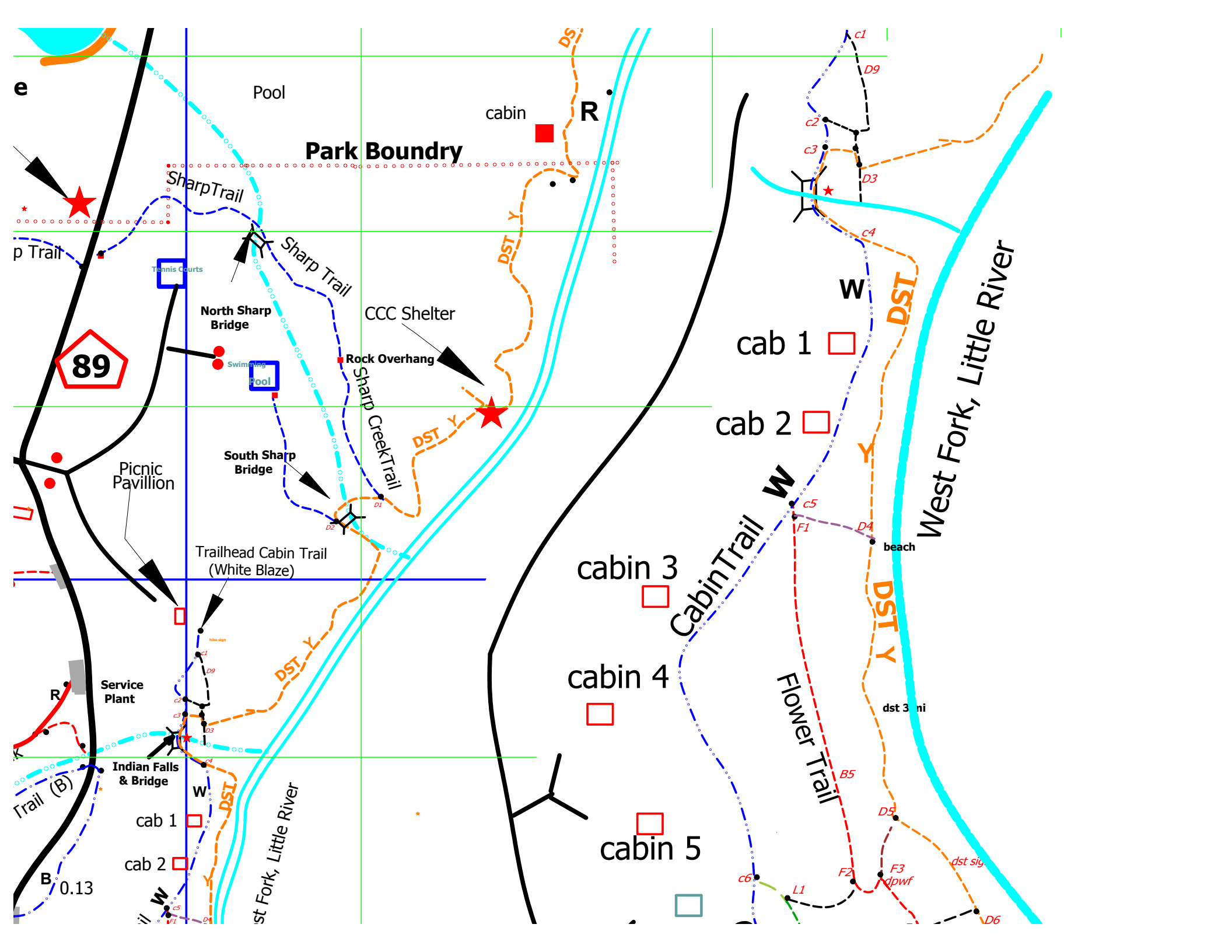
Cabin Tr

Cabin Tr

Cabin Tr

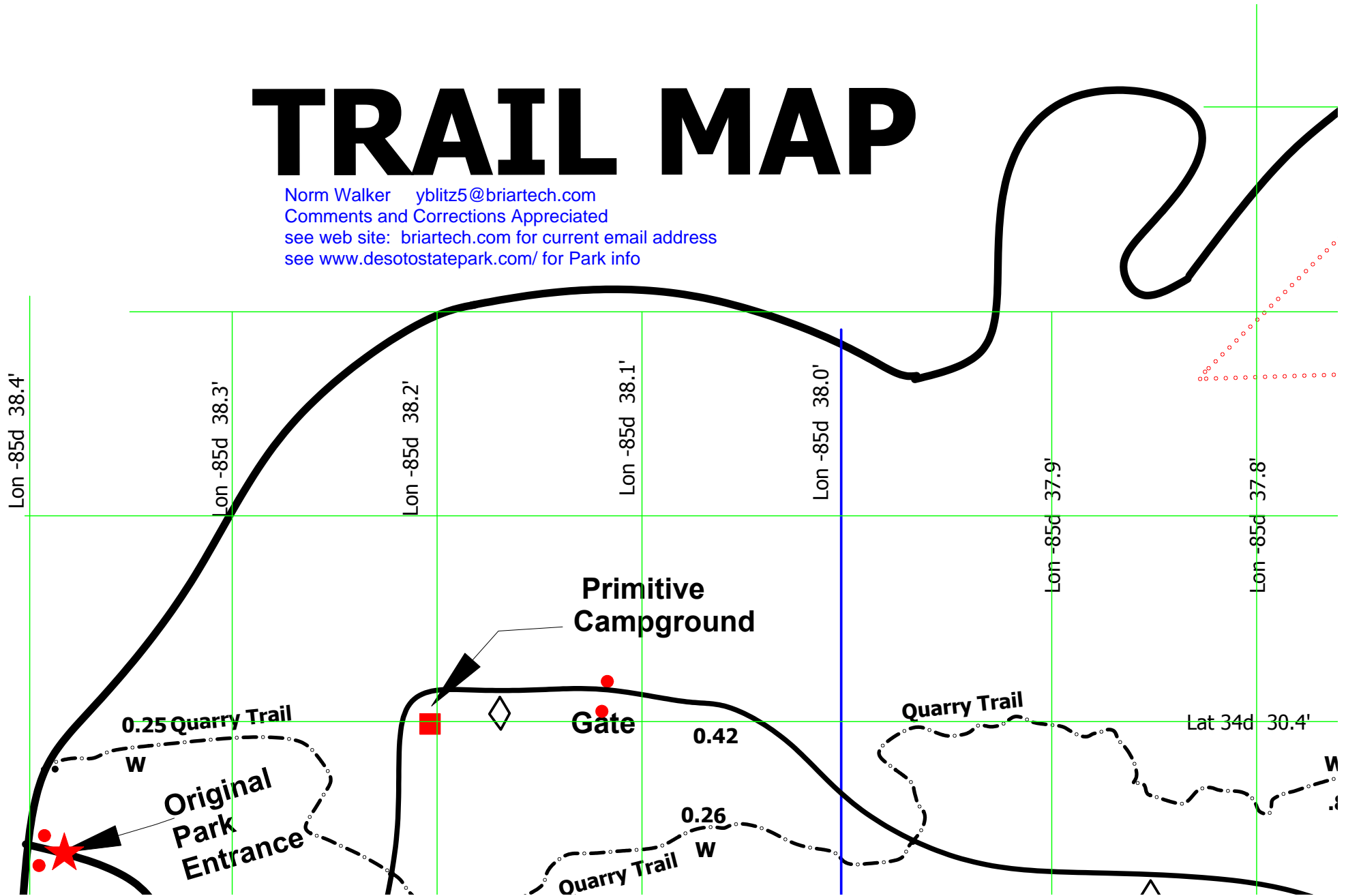






TRAIL MAP

Norm Walker yblitz5@briartech.com
Comments and Corrections Appreciated
see web site: briartech.com for current email address
see www.desotostatepark.com/ for Park info

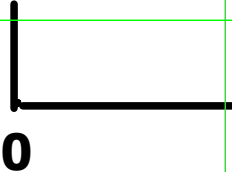


To DeSoto Falls, Mentone,
Valley Head, 159 North



DES

Park Boundry



Sharp Creek

Quarry

Granny Dollar
(Private)

84 Quarry Trail

Quarry Trail

0.67
W

Lon -85d 37.7'

Lon -85d 37.6'

Lon -85d 37.5'

Lon -85d 37.4'

Lon -85d 37.3'

Lon -85d 37.2'

Lon -85d 37.1'

34d 30.7'

34d 30.6'

Desoto State Park

