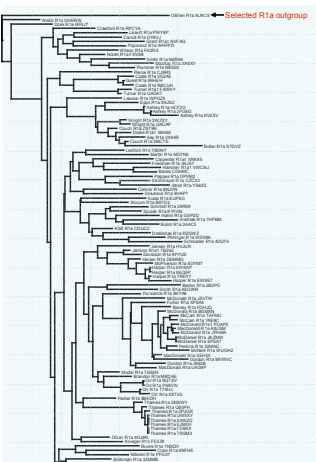
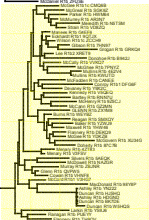


Phylogram of R1b and R1a Ysearch classified haplogroups

- 37 FTDNA markers, m713 individuals, R1b and R1a only from Britain, Ireland, Western Europe and Scandinavia (extracted 21 June 2005).
- Created using Populations. Nei's standard genetic distance and neighbor joining. Note graph used R1a classified NJSC5 sample as an outgroup.



R1a



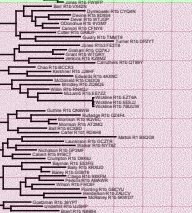
R1ba "David Wilson"
Irish/Scots cluster



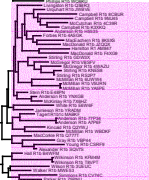
R1bcc "Unknown"
Scots/Euro cluster



R1bff "unknown"
Border cluster



R1bgi "unknown"
English cluster



R1bi "Ken Nordtvedt"
Scots cluster