

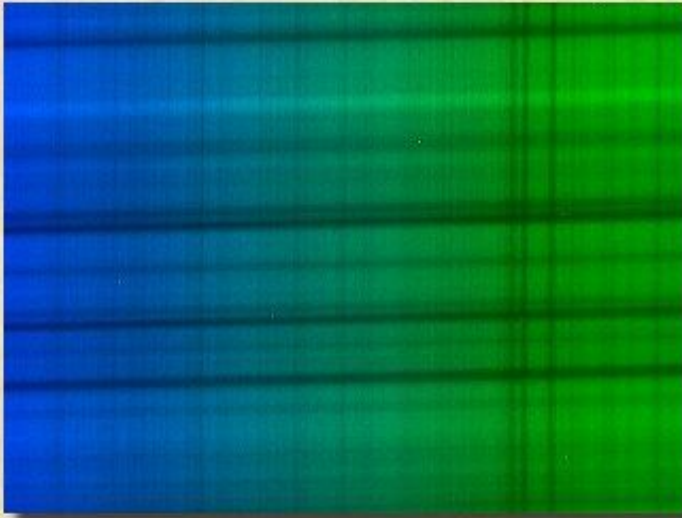
# GRATING SPECTROGRAPH

## SOLAR SPECTRA

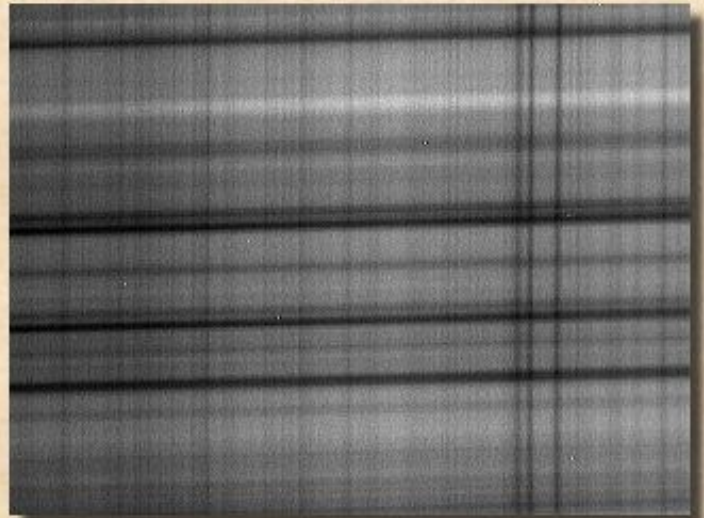
Solar spectra captured with an SC1 modified QCPro3000 camera. The image covering the 4963-5215Å region is a composite of 10 x .5 sec exposures; dark subtracted, gamma corrected and slight sharpening performed with Paintshop Pro. Grayscale conversion and a medium strength unsharp masking applied. The Horizontal lines are due to internal imperfections in the instrument itself; primarily the slit edges. [Neon calibration lamp spectra](#) may be found here

**Entrance slit:** .0012"(30 microns) width  
**Camera lens:** 112mm focal length 17mm diameter  
**Collimator:** 135mm focal length 35mm diameter

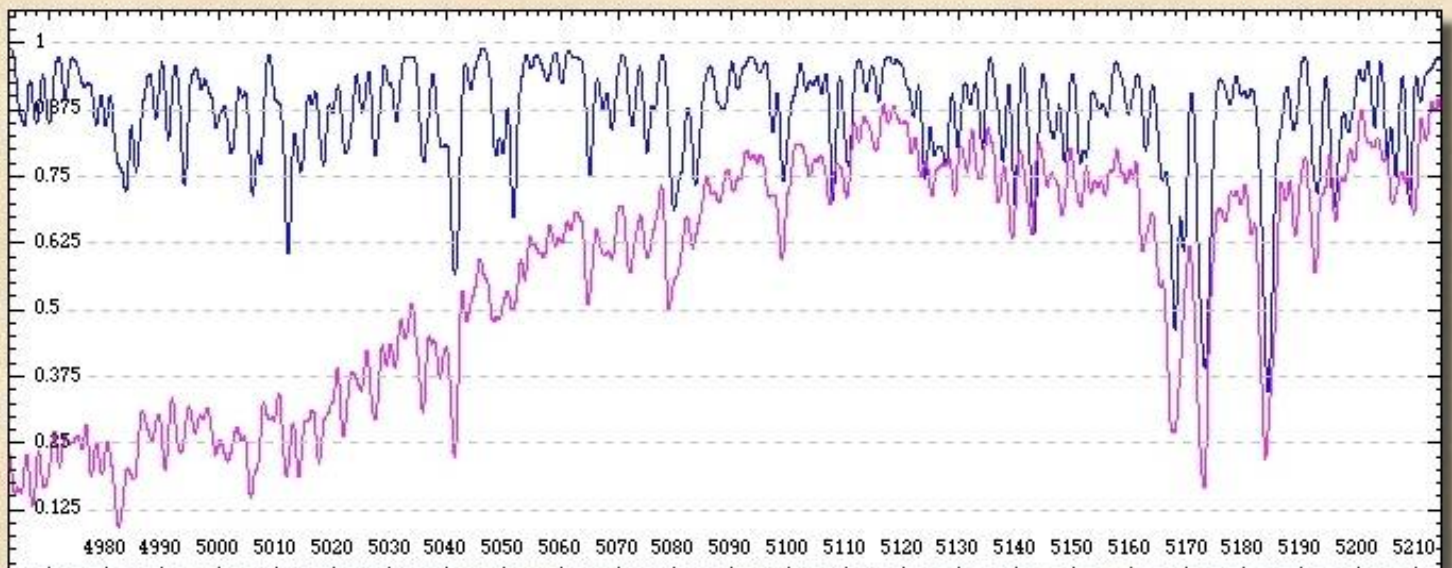
Sept 28 - Oct 04, 2003



**MgI Triplet 4963Å to 5215Å**



**Unsharp Mask 4963Å to 5215Å**



4963Å to 5215Å Top trace generated by R.O.Gray's SPECTRUM program. Gaussian smoothed to a resolution of 1.1Å

 [Download VisualSpec profile](#)



© Copyright 1996-2005 by Randy Lauderbaugh

