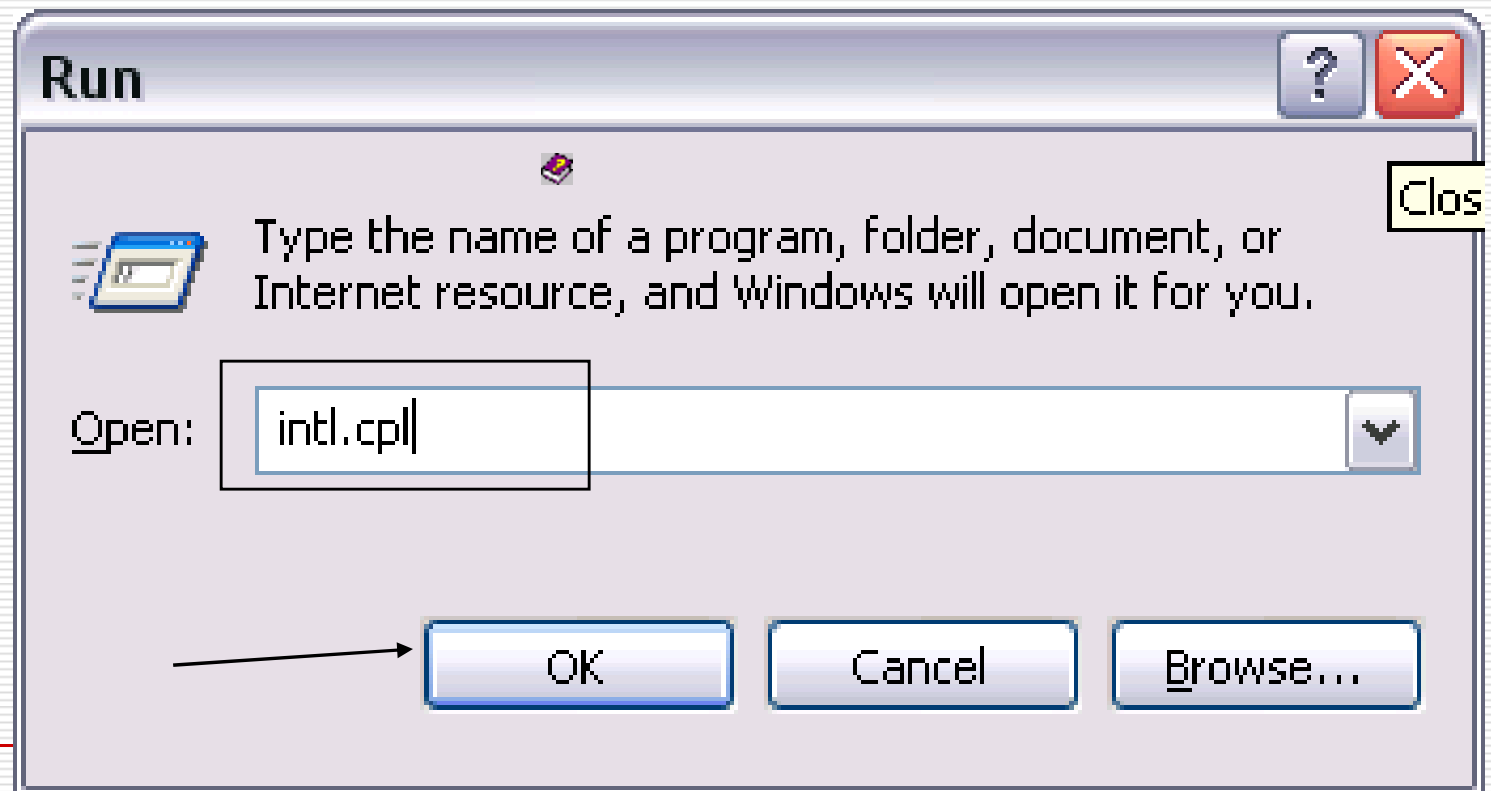


How to add Japanese Input

Step 1

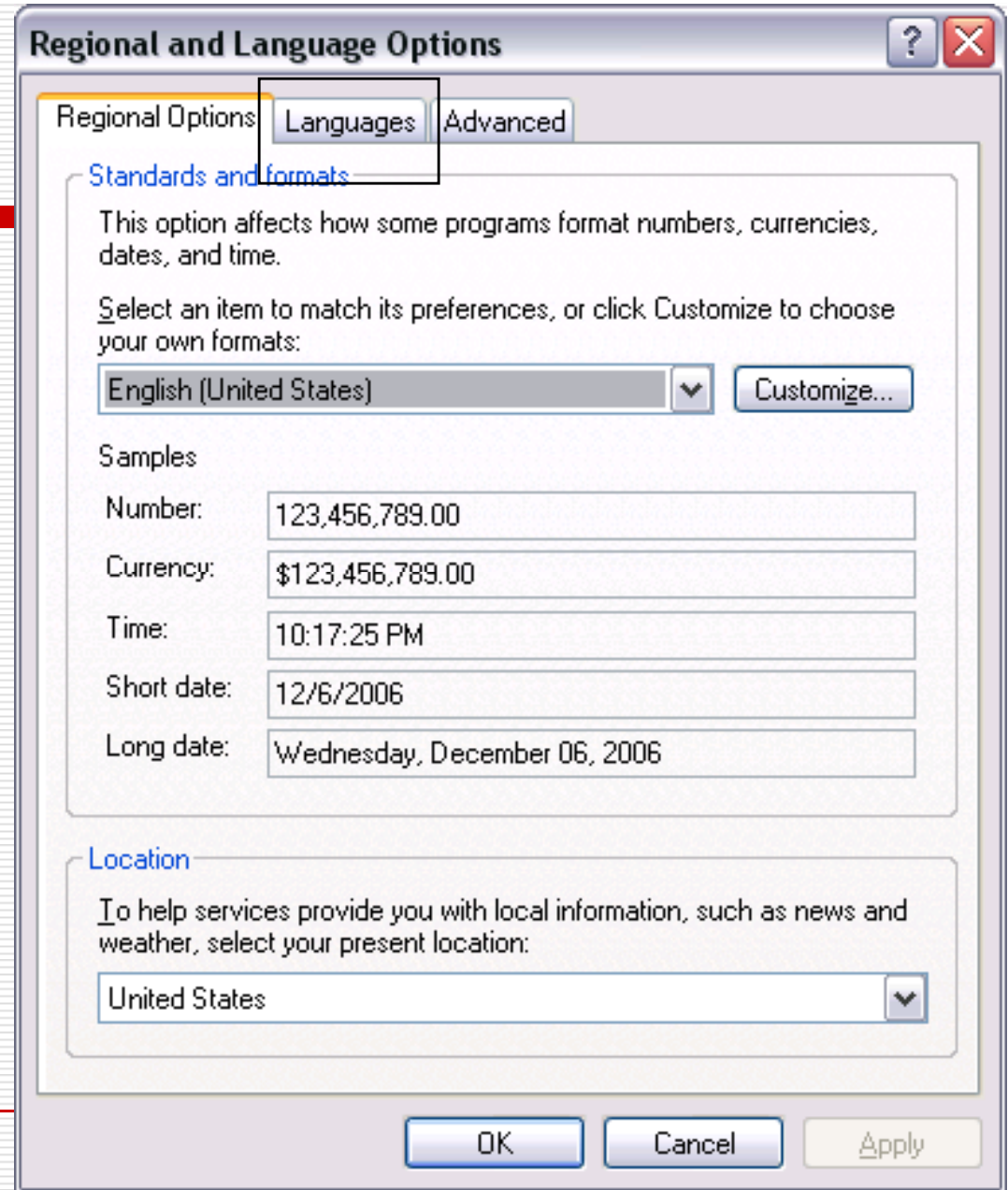
Go to **Start Button**, select **Run**.

Type "**intl.cpl**" and click **OK**



Step 2

The **Regional and Language Options** window will appear. Click on **Languages** tab.

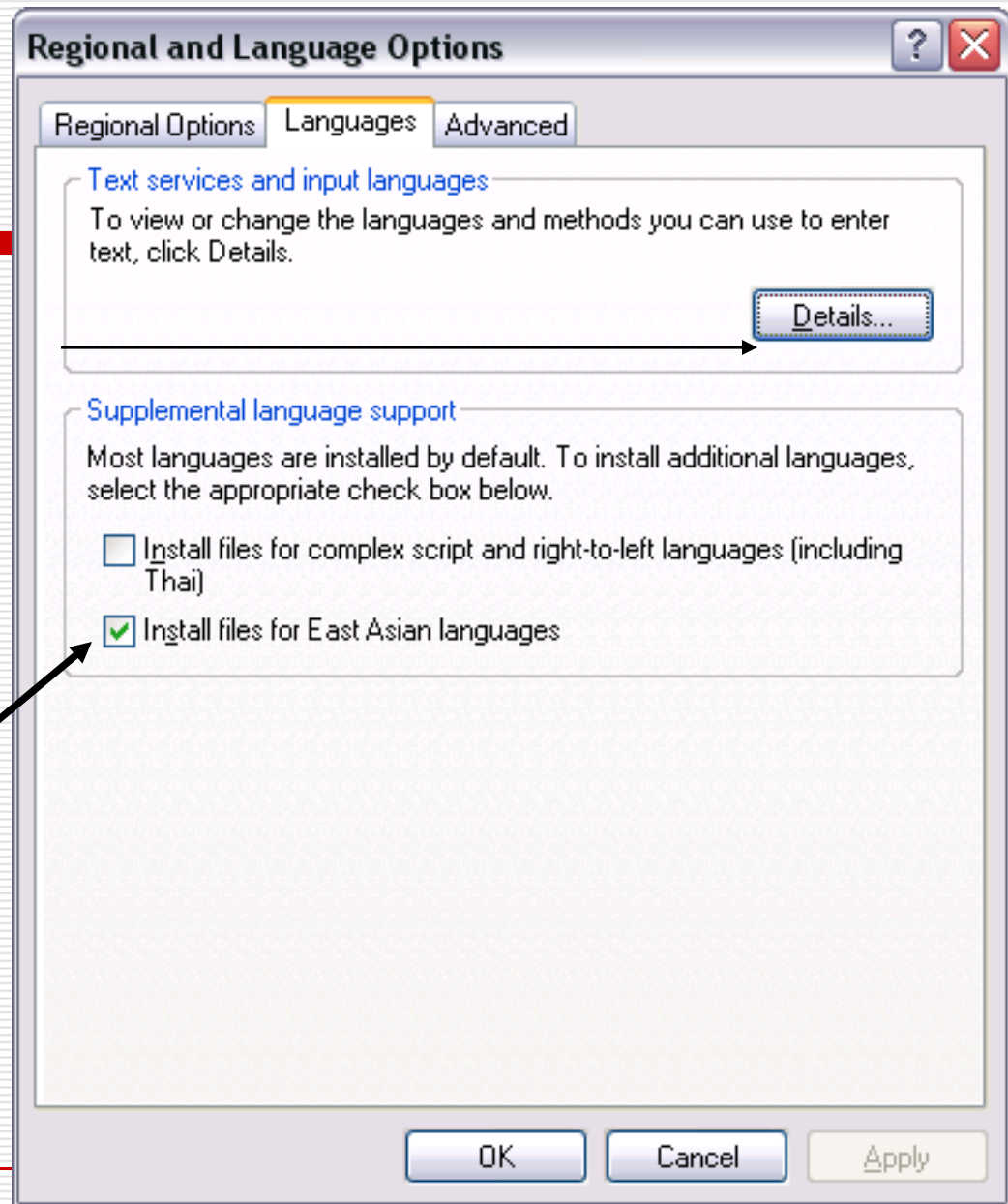


Step 3

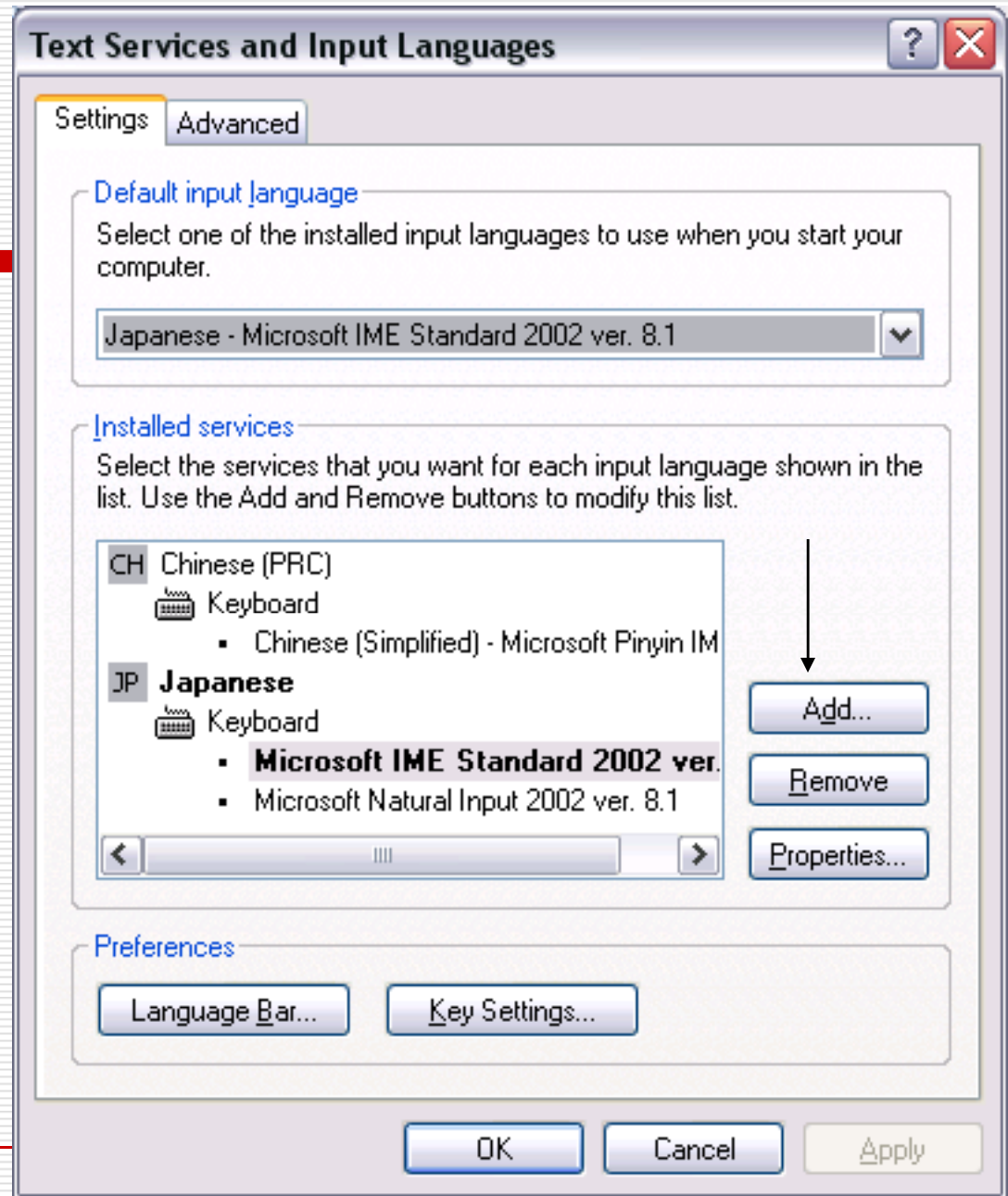
Ensure that

IMPORTANT!

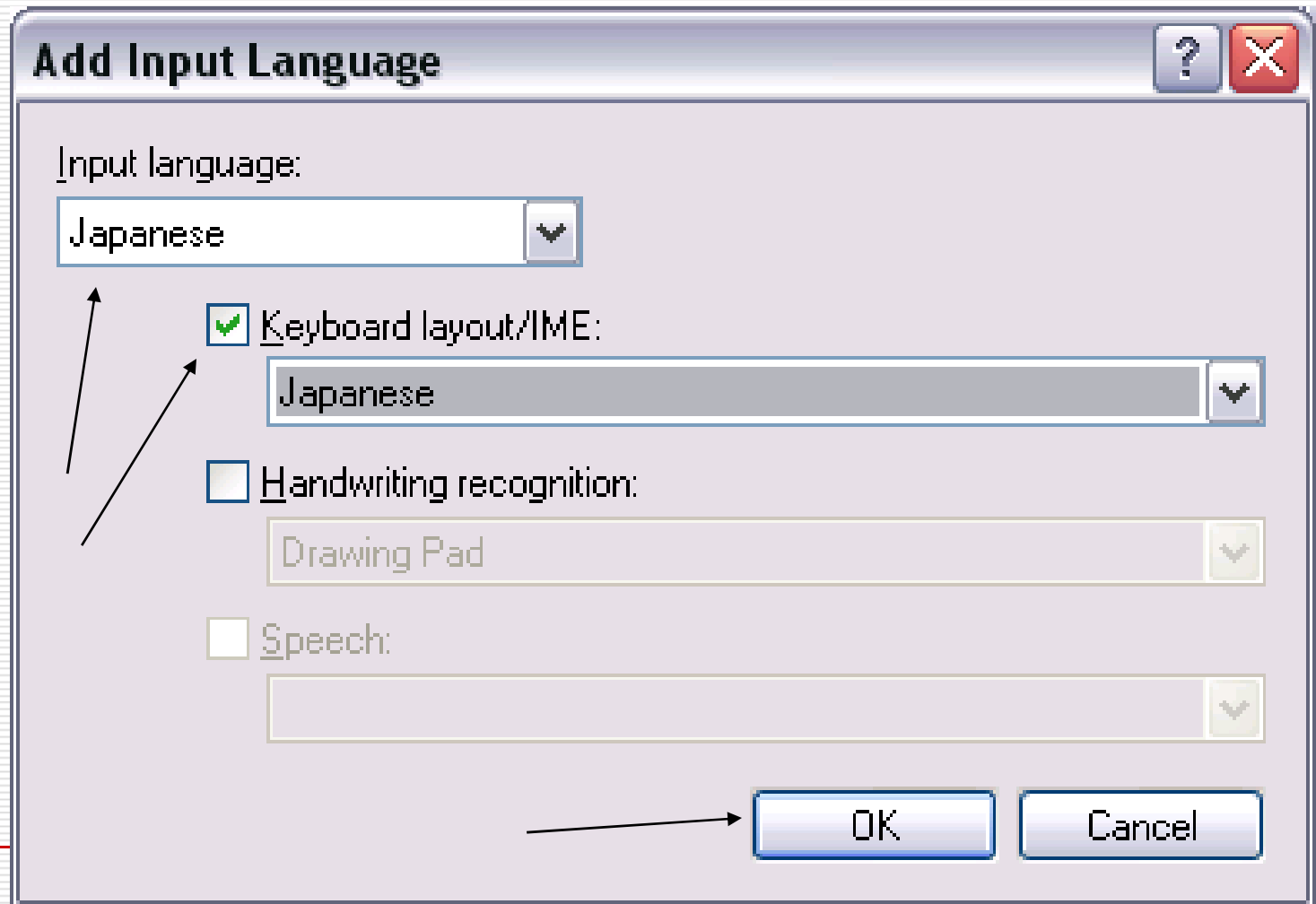
This checkbox must be on. If it's not switched on, you need the XP CD to install the files needed for Japanese input.



Step 4



Step 5



Step 6



Step 7

- ❑ Press Alt-Shift to switch language or click on the EN button at the bottom right hand corner of the screen.
- ❑ Press Alt + ~ to switch between hiragana and English once in Japanese mode.

