

Take a stab at one or both of our contests!

Celestial Pumpkin-Carving Contest:

Bring your Celestially PRE-CARVED pumpkin to Astronomy's Sky Show where Astronomy editors will judge the entries and award the TOP THREE WINNERS a free subscription to Astronomy Magazine!

Rules:

- ★ Be sure you bring a flashlight to set inside your pumpkin for illumination.
- ★ No carving will be allowed onsite.
- ★ No fire-burning candles or anything that requires flame will be allowed as illumination.

Thank you for your attention to these rules.

Costume Contest

Do you have a favorite astronomy hero, such as Galileo or Kepler? Maybe you're partial to astronomical objects. Either way, create the winning costume (3 winners) and you'll get a free Astronomy Magazine subscription.

Rules:

Sorry Moms and Dads -- KIDS only (up to age 15).

Raindate information will be provided via voice message at (303) 948-5825 after 4:00 p.m. October 6. Or, check out the Sky Show's website from:

www.astronomy.com

Main Sponsors:
★ Meade Instruments
★ Denver Astronomical Society

Participating Vendors:

- ★ Software Bisque
- ★ S & S Optika
- ★ Mike's Camera

The following is a table of planetary data for Friday, October 6, 2000:

OBJECT	RISING/SETTING TIMES
Moon	Sets 12:16 a.m.
Sun	Sets 6:33 p.m.
Mercury	Sets at 7:22 p.m.
Venus	Sets at 7:51 p.m.
Saturn	Rises at 8:44 p.m.
Jupiter	Rises at 9:15 p.m.
Pluto	Sets at 10:01 p.m.
Neptune	Sets at 1:15ish a.m.
Uranus	Sets at 2:30ish a.m.

Astronomy
Magazine

and Astronomy.com

present

the **Sky Show**

in Denver, CO



Friday, October 6, 2000
(Raindate October 7, 2000)

6 p.m. to Midnight
(gates close at 11 p.m)

Co-Sponsored by
The Denver Astronomical Society
and Meade Instruments

Join us for an evening of
activities, food, and
star-gazing
at Aurora Reservoir



Join us for an evening of stellar exploration for the entire family!



Aurora Reservoir is located two miles east of South Gun Club Road on East Quincy Avenue (above).

Site Diagram for The Sky Show (below).



The Sky Show in Denver

Look through large telescopes and uncover mysteries of the night sky -- our moon, planets, galaxies, nebulae, star clusters, and more!

- ★ Travel to various "sky-stations" where you will be introduced to your stellar tour guides and led through the heavens.
- ★ Take your very own digital photographs of the stars with the help of experts from Software Bisque and the click of a mouse button!
- ★ Wander amongst some of the major manufacturers of telescopic equipment and astronomical software in the world.
- ★ Meet fellow star travelers from your community that love to share the sky with others.
- ★ Enter the celestial pumpkin-carving contest!
- ★ Children, dress up as your favorite astronomical object or personality! If our team of judges select you as our winner, you will win a subscription to Astronomy Magazine!
- ★ Try your hand at simple projects and learn some activities for family-time at home!

\$4.00 per person*
Dress warmly

★ Music Provided by RAS Music

★ Food and hot drinks by Frank-n-Stein's

*Children under the age of three (3) are free.

TELESCOPE STATIONS

LUNAR AND PLANETARY STATION:

The Moon: As it reflects sunlight back into the sky, the moon provides a hunting ground of innumerable craters and valleys for telescopic explorers. Now just a day past first quarter in phase, the moon will provide an evening treat for those who view the terminator - the line between light and shadow - as it traces across craters, illuminating their rims and central peaks.



The Planets: Brilliant Venus and elusive Mercury linger low in the west for a short while after sunset. Beautiful Saturn and Jupiter rise mid-evening to make a visual feast that shouldn't be missed. Additionally, challenging Uranus and Neptune will be found in the constellation Capricornus.

DEEP SKY STATION:

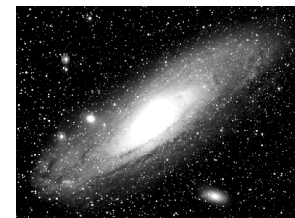
M57 (The Ring Nebula) is the remainder of a sunlike star which has blown away its outer shell. The central star, a planet-sized white dwarf star, is visible in high-powered telescopes.



M13 (The Great Globular Cluster in Hercules) dazzles all who look upon it. Thought to be the finest cluster of its type in the northern hemisphere, this object may

contain a million stars and is about 150 light years in diameter.

M31 (The Great Andromeda Galaxy) is our Milky Way Galaxy's closest neighbor at almost three million light years away. M31 has four smaller galactic companions which appear to be gravitationally connected with it. See how many of the companions you can find when you look at this magnificent galaxy through telescopes at the Sky Show.



CONSTELLATION STATION:

In addition to the telescope stations, Astronomy magazine and Denver Astronomical Society representatives will show visitors the bright stars of the early autumn sky. Still prominent this evening is the "Summer Triangle" made of the stars Deneb, Vega, and Altair. You'll also be introduced to the "Great Square" of Pegasus and the constellations Capricornus, Hercules, and Andromeda.