

## Bio I

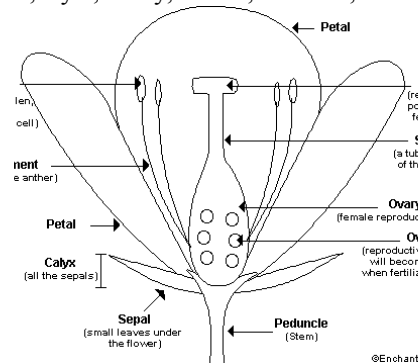
### Notes: Medelian Genetics

Gregor Mendel:

Why did Mendel work with peas?

- 1.
- 2.
- 3.
- 4.

Anatomy of a flower (terms: pistil, stigma, style, ovary, anther, filament, stamen, gametes, pollen)



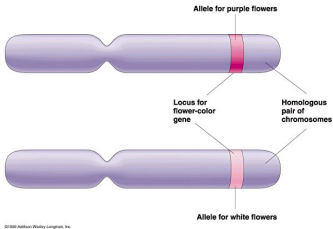
Self pollination vs. cross pollination of flowers:

Mendel's experiment

- P generation:
- Cross pollination:
- 1<sup>st</sup> generation:
- 2<sup>nd</sup> generation:
- Conclusion:
  - 1.
  - 2.

Mendel’s conclusions explained over time (terms: gene, allele, homologous chromosome)

- 1.
- 2.



Dominant and recessive alleles

- Explanation:
- Law of Dominance:

Representing dominant and recessive alleles:

- Appropriate letters:
- Genotype
  - Definition:
  - Types:
    - a.
    - b.
  - Example:
- Phenotype:
  - Definition:
  - Example:

Practice with terminology:

**G = Green hair**                      **H = Hairy ears**  
**g = Purple hair**                      **h = Smooth ears**

	<i>Genotype</i>	<i>Phenotype</i>		<i>Genotype</i>	<i>Phenotype</i>
Gg			GG		
gg			Hh		
HH			hh		
GgHH			gghh		
Gghh			GGHh		
ggHh			GgHh		

--	--	--	--	--	--