



# ZRC HIGHLIGHTS



Volume 3 Issue 1

Official Newsletter of the CHED-UPLB Zonal Research Center for Regions IV and V

Jan-June 2006

## ZRC joins NOCEI, Interzonal research conferences



**CHED-OPPRI Director Dr. Jean C. Tayag** (second from left), **Lyceum of Batangas President Mr. Peter P. Laurel** and **UPLB Vice Chancellor for R&D and CHED ZRC for Regions IV & V Director Dr. Enrico P. Supangco** (third and second from right, respectively) receive certificates and tokens of appreciation as plenary speakers and forum host, together with the Presidents of member-HEIs and the Forum Committee.

One hundred thirty-one school officials, faculty, researchers and personnel participated in the 2006 Network of CALABARZON Educational Institutions (NOCEI) Research Forum with the theme, "Convergence and Synergy: Strengthening Regional Ties through Research", held at the Lyceum of Batangas in Batangas City last May 19.

Aimed to strengthen linkages among CALABARZON educational institutions through sharing of research outputs and relevant information on research, the NOCEI Research Forum was envisioned to be a catalyst for research collaboration between higher educational institutions (HEIs) and to enrich research-based knowledge and technologies in various disciplines.

In the plenary session, Dr. Jean C. Tayag, Director of the Commission on Higher Education-Office of Policy Planning and Research Information (CHED-OPPRI) talked on "Strengthening Research in Higher Education in Region IV", while Dr. Enrico P. Supangco, UPLB Vice Chancellor for Research and Extension and ZRC Program Director discussed "The Role of CHED-Zonal Research Center in Strengthening Research Capability in Regions IV & V".

On the other hand, 26 papers on various researches in CALABARZON were presented in parallel sessions; two were shown as poster papers. The research areas covered environment and natural resources; business and industry; cultural heritage; engineering, mathematics and IT; education; peace culture; social development and gender issues; and health and medical sciences.

As part of its commitment in capability-building of HEIs in research, the CHED-UPLB Zonal Research Center for Regions IV and V supported the production and distribution of the forum's announcement. The Center also provided manpower, supplies and materials for the production of program booklets, certificates, and other logistics.

The Center intends to support other research-sharing initiatives conducted by regional associations. (FACruz)



**CHED Republica awardee Dr. Angelo A. Unite** of the De La Salle University-Manila talks on his paper during the first Luzon Interzonal Research Conference.



With the theme "Enhancing Research Culture through Cooperation: The Republica Award Winners," the first ever Luzon Interzonal Research Conference was a complete success. The activity had 157 attendees from various member HEIs of the four Luzon Zonal Research Centers based in De La Salle University-Manila, Mariano Marcos State University, University of the Philippines-Diliman and UP Los Baños. The one-day conference, held at Yuchengco Building, De La Salle University-Manila last March 3, showcased not only the highlights of the work of CHED's 2004 and 2005 Republica Awardees in Luzon (in recognition for exemplary researches published in refereed journals) but also provided an orientation on CHED's various grant programs.

(continued on Page 7)

### Inside this issue:

ZRC holds RMIS Dialogue and Training Needs Assessment	2
Perilla is New CHED-UPLB ZRC Consultant	2
RMIS collection intensified, ZRC visits HEIs	3
Features: CvSU, Dr. Arnolfo M. Monleon	4, 5
What to do with the RMIS CD?	7

# ZRC holds RMIS Dialogue, Training Needs Assessment

“When we need some information, you should send those information to us because those will be the basis for the type of assistance that we can extend to our members. We are here as facilitators ... helping and assisting in making the research activities in your institutions easy for you”.

This was the focal message from Dr. Mario V. Perilla, ZRC Consultant, on the RMIS Dialogue that was held consequently with the ZRC Training Needs Assessment at the College of Economics and Management (CEM) in UP Los Baños last May 16.

A total of 53 faculty/staff—mostly past attendees of ZRC trainings—from 34 member-HEIs from Regions IV and V attended the one-day dialogue. Geographically, 23 participants came from Region IV (Laguna, Batangas, Rizal, Cavite, Palawan, Mindoro, and Quezon) and 11 from Region V (Camarines Norte, Camarines Sur, Albay, and Sorsogon).

## RMIS Database

The Research Management Information System (RMIS) is a database of information on member HEIs' researches, research units and corresponding outputs, institutional researches, graduate theses and dissertations, research funding agencies, and CHED-funded research projects from 1999 to 2004. The consolidated result shall be used as benchmark

data in designing strategies to enhance research capability and policy formulation of the ZRC members nationwide.

The current status of the RMIS in Regions IV and V and the problems on filling out the RMIS forms, especially the one in MS Access format, were tackled during the dialogue. As of writing, 34 out of 81 members (41.98%) have already completed and submitted the forms.

## Training Needs Assessment

To identify the research capability needs of 81 member-HEIs, the participants grouped according to province and brainstormed on various training topics that they deemed would help the ZRC. They came up with the following possible training-workshops that would be conducted on the third and last year of the Center's implementation:

1. Packaging of research proposals; Publishing research in refereed journals
2. Dialogue on research being a vital priority among HEIs
3. Establishing linkage, networking, and collaborative researches among HEIs
4. Training on latest technology, statistical tools, and access to information sources
5. Sourcing of research funds and strategies to generate external support for research
6. Incentives/ motivations to conduct research, and
7. Database management of research outputs

Dr. Jesus P. Briones (University of Batangas) and Prof. Beng P. Umali (Cavite State University) represented the past training attendees by presenting their completed researches (see page 6). An open forum followed the presentation.



*Representatives from member-HEIs list down and tackle various training needs.*

## Perilla is New CHED-UPLB ZRC Consultant

Resplendent in a *barong*, Dr. Mario V. Perilla started his new role among multifarious roles as Consultant of the CHED-UPLB ZRC for Regions IV and V on February 2006.



Dr. Perilla is a Professor 5 of Agribusiness Management at the College of Economics and Management (CEM) of UPLB and a member of the UPLB Pool of Research and Extension Evaluators. Concurrently, he is a member of the UPLB Fiscal Policy and Operations Committee, a Charter Editorial Board Member (Business Management) of the Journal of the International Society for Southeast Asian Agricultural Sciences, an Editorial Board Member of the GSB De La Salle Journal of Business and Management, the Chair of the CHED Task Force on Agribusiness, and a Fellow of the Royal Institute of Management- Singapore.

As ZRC Consultant, he is responsible for finishing the Graduate Tracer Study, keeping pace with the Research Management and Information System (RMIS) and helping set the stage for the 1<sup>st</sup> CHED Zonal Research Centers International Research Forum in 2007.



# RMIS collection intensified

## ZRC staff visit member-HEIs

To facilitate the collection of RMIS databases from 81 member-HEIs in Regions IV and V, the staff of CHED-UPLB ZRC have started personally visiting presidents and research directors to explain the importance and instructions on filling out the Research Management Information System (RMIS) database forms.

From February to June 2006, the staff has visited 29 state universities and colleges and private HEIs in Batangas, Cavite, Laguna, Quezon, and Rizal. The Center plans to visit members in Bicol and Region IV-B (MIMAROPA) areas in the next semester in time for the research capability building activities such as training workshops.

Thirty-four of the 81 members have already submitted the RMIS database forms which cover information on researchers, research units, institutional researches, graduate theses and dissertations, and funding agencies other than CHED, from AY 1999-2000 to AY 2003-2004.

These institutions include:

1. Golden Gate Colleges (Batangas)
2. I.B. Calingasan Memorial Institution (Batangas)
3. Lyceum of Batangas (Batangas)
4. University of Batangas (Batangas)
5. Adventist International Institute of Advanced Studies (Cavite)
6. Adventist University of the Philippines (Cavite)
7. Cavite State University (Cavite)
8. Saint Joseph College (Cavite)
9. Colegio de Los Baños (Laguna)
10. Colegio de San Juan de Letran (Laguna)
11. Eastern Laguna Colleges (Laguna)
12. San Pablo Colleges (Laguna)
13. St. Michael's College of Laguna (Laguna)
14. University of Perpetual Help System (Laguna)
15. University of the Philippines Los Baños (Laguna)
16. Marinduque State College (Marinduque)
17. Divine Word College of San Jose (Occidental Mindoro)
18. Occidental Mindoro National College (Occidental Mindoro)
19. Divine Word College of Calapan (Oriental Mindoro)
20. Palawan State University (Palawan)
21. Western Philippines University (Palawan)
22. Sacred Heart College (Quezon)
23. Southern Luzon Polytechnic College (Quezon)
24. Roosevelt College-Cainta (Rizal)
25. Bicol College (Albay)
26. Bicol University-Main Campus (Albay)
27. Republic Colleges (Albay)
28. Camarines Norte State College (Camarines Norte)
29. Mabini College (Camarines Norte)
30. Camarines Sur State Agricultural State College (Camarines Sur)
31. Partido State University (Camarines Sur)
32. University of Nueva Caceres (Camarines Sur)
33. University of Saint Anthony (Camarines Sur)
34. Sorsogon State College (Sorsogon)

According to HEIs that were visited, the reasons for not submitting the database early were changes in administration, lack of knowledge on database software applications such as Microsoft Access, misunderstanding of RMIS guidelines, and the need for more time to fill out the requirement of the ZRC.



**ZRC Consultant Dr. Mario V. Perilla and staff explain and/or demonstrate how to fill out the RMIS forms.** (Top-bottom: Presbyterian Theological Seminary, Sacred Heart College, Divine Word College of Theology, De La Salle-Health Sciences Campus, Rizal College of Taal, and Adventist International Institute of Advanced Studies).

A premier university, the **Cavite State University (CvSU)**, is celebrating its golden centenary this year with a track record of accomplishments and great visions for the future.

Starting as a Thomasite Intermediate School in the historic province of Cavite in 1906, the university is now one of the institutions in Southern Tagalog that is highly recognized for excellence in instruction, research, extension, and even in production. At present, CvSU has seven colleges and one graduate school in the main campus at Indang, two integrated CHED-supervised institutions, and three branch campuses.



*A century of strengthening education and R&D*

# Cavite State University

*Featured*  
**HIEI**

## Academe

CvSU offers elementary, secondary, and 69 degree and non-degree academic programs in the tertiary and graduate levels. In November 2000, the university was designated by CHED as a Center of Development (COD) in Agriculture and Agricultural Engineering, thus the University receives an annual PhP1 million from CHED for each of the two programs. It also has a Faculty and Staff Development Program which offers deserving faculty members various

scholarship grants to pursue graduate studies, for the professional development of the faculty and staff. Similarly, it offers several financial assistance programs and scholarships for economically-challenged students whose future depends on high quality yet low cost education from state universities such as CvSU.

## Research and Extension

The souvenir to CvSU visitors is a handful of *barako* brewed coffee in neo-traditional jute sack, so named Aguinaldo Blend Cavite Coffee.

The university has proudly been the lead agency in the National Coffee Research and Agriculture Program and in the Urban Agriculture Research and Development Program. Its Coffee R&D Program presently focuses on “Excelsa and Liberica (Barako) Research and Development” and the “Technology Assessment and Marketing Analysis for Coffee.” The CvSU Research Center annually conducts an Agency In-House Review of Center-funded researches and regularly disseminates its research outputs through the CvSU Research Journal.

## Booming CvSU Industry

While the government’s allocated budget for state universities and colleges (SUCs) is limited, CvSU has erected several business enterprises to support itself. Among its market products are coffee and other agricultural processed products that are being developed and studied in the University. In the future, CvSU is envisioned to meet the industry standards and demands of the urbanization of the CALABARZON.



*The CvSU Research Center*



# Featured Researcher

## Prof. Arnolfo M. Monleon

### Talk about best research paper grand slam.

During the 36<sup>th</sup> highly-coveted Philippine Society of Animal Science (PSAS) Convention in 1999, our featured researcher bagged the Best Paper Award in the Poultry Category. He was the co-author of the paper—and an uprising fresh graduate of BS Agriculture. After five years, he became a full-pledged Masters degree holder in Animal Science and

Genetics. He received the commencement premium from PSAS, his second PSAS Best Paper Award, this time in Breeding & Genetics Category, for the paper “Genetic Diversity Within and Among Populations of the Philippine Mallard Ducks (*Anas platyrhynchos* L.) detected using randomly amplified polymorphic DNA (RAPD) markers.”

In October 2005 and on the 42<sup>nd</sup> PSAS Convention, his paper “*In situ* Conservation Efforts for the Philippine Native Pig (*Sus domesticus*)” won the Best Paper Award in Social, Economic and Development Category. This research paper grand slam winner is Prof. Arnolfo M. Monleon, Highlights’ first featured researcher.

Prof. Monleon took up both his bachelor and master degrees in UP Los Baños with scholarship grants from the Bureau of Agricultural Research, Department of Agriculture-National Research and Development System for Agriculture and Fisheries (BAR-DA-NARDSAF).

Among his numerous achievements in research are his five published papers in the Philippine Journal of Veterinary and Animal Sciences (PJVAS) and the Animal Husbandry and Agricultural Journal (AHAJ), and his 16 scientific papers presented in local and national symposia and scientific meetings held at Marinduque State College (MSC), STARRDEC, PSAS, and PhilSAGEN, among others.

As an extensionist, he has served as the coordinator of the PSAS Outreach Program in Torrijos, Marinduque in April 2005 and as a resource person to about six seminars and workshops at the MSC and PSAS. He has also been acknowledged by the Marinduque Pharmaceutical Association for his services during the Medical-Dental Mission for Inmates in December 2005.

Dr. Arnolfo M. Monleon is presently the Director of Extension Service at the Marinduque State College.

Since 1964, the PSAS has been holding annual conventions to recognize deserving members for their contributions to the academe, research, extension and industry in the fields of veterinary and animal sciences. Aside from the Distinguished Fellow as the highest award, there are best paper awards in animal breeding and genetics; anatomy and physiology; health and welfare; nutrition, feeding and feed resource utilization; production and waste management; products and by-products processing/utilization; social, economics and development; undergraduate thesis; and the scientific poster presentation.



The University of the Philippines Los Baños (UPLB) is involved not only in instruction, but also in research and extension. Its intellectual resources, through research, continue to generate new ideas and technologies designed to benefit various clientele. Through the University’s extension function, these ideas and technologies are disseminated to intended beneficiaries with the goal of attaining social change and development.

Among the regular extension activities of UPLB is the offering of non-degree programs through the Summer Short Courses and Training Programs. These short courses and training

programs are designed to provide practical knowledge and skills in various subject matters.

These courses are offered annually in

March, April, and May but may be arranged at another time depending on the request of an organization.

Various courses and training programs are offered by the UPLB units. In addition to these, UPLB also designs and conducts other courses upon request of a sponsoring institution. For more information and inquiries, contact the Office of the Vice Chancellor for Research and Extension (OVCRE), UP Los Baños, College, Laguna; telephone numbers (049) 536-5326, (049) 536-2354, and telefax (049) 536-3341. (LO Borlaza)

## UPLB SUMMER SHORT COURSES

### GUIDE TO CONTRIBUTORS

ZRC Highlights welcomes articles and announcements, particularly on research spotlights of member HEIs, that may be of interest or have immediate use to the general readers.

Articles should be typed on one side of white bond paper (8.5"x11"), double-spaced throughout. Emailed articles are accepted.

**ZRC Highlights** acknowledges research outputs of member-HEIs and features researches from general fields of specialization. In this issue, it is paving way to two researches (in environment/agriculture and socio-economics) that were presented during the Training Needs Assessment in UPLB last May 16.

Both presentors were past attendees of the six-series “Training on Research Methodologies, Monitoring, and Evaluation,” which had the objective of developing the research capability of its constituents.

#### ENTREPRENEURIAL TRAITS AND COMPETENCIES OF B. S. COMMERCE (BSC) STUDENTS OF THE UNIVERSITY OF BATANGAS (Abstract)

Jesus P. Briones, DBM

This study assessed the entrepreneurial traits and competencies of B. S. Commerce (BSC) students of the University of Batangas (UB). Two sets of questionnaires were distributed to the randomly sampled participants from November, 2003 to January, 2004. Data from 236 fourth year BSC students and their 23 business education mentors were computed by percentage, weighted mean, analysis of variance, t-test, Pearson’s correlation coefficient, and Scheffe’s test. It was found out that the UB’s BSC program, in general, and the 3-unit entrepreneurship subject, in particular, provided the graduating commerce students with the needed skills and attributes of an entrepreneur and made the said students aware of entrepreneurship and self-employment as a career option. However, these students still prefer office employment. Thus, the objective of the Commerce Department of equipping their students with skills necessary to set up their own business and tap varied sources of livelihood was considered not fully met. The findings also showed that the school environment was only conducive to learning entrepreneurship to a limited extent and strategies to strengthen entrepreneurship were only implemented to a moderate extent, thereby requiring some improvements. The entrepreneurship traits and competencies of students were found to be not related to their personal profile and family background. There were also gaps between the levels of the entrepreneurial competency needs of the students and the extent to which the BSC program has provided such needs.

#### KAONG NURSERY AND PALM GROVE CONSERVATION PROJECT

L.C. Lapitan, Jr., B.P. Umali, C.S. Crucido, A.dM. Magsino, L.P. Novicio and J.A. Viado

Sugar palm, *Arenga pinnata* (Wurmb) Merr. or *kaong*, as it is locally known, is a large solitary palm that is found to be naturally occurring and widely distributed at low and medium altitudes, in ravines along streams, and in areas under semi-cultivation throughout the Philippines. It can also be found in virgin forests as its fruits are occasionally scattered by fruit bats and wild animals like the palm civets. In the province of Cavite, particularly in the upland towns, *kaong* used to be abundant in ravines and riverbanks but their population has steadily declined in the recent years.

The expansion of industrial and urban areas in Cavite towards the upland towns contributes to the decrease in the population of *kaong* plants in the province. Clearing to give way to industrialization went unabated. Plants that die are not replaced while natural regeneration is not being allowed to happen. Among the upland towns of Cavite, *kaong* is found to be most abundant at present in the town of Indang where Cavite State University (CvSU) is located. Indang has a promising *kaong* industry and a number of families depend on this economically important crop for their livelihood. These farmers produce primary products such as vinegar, broom, rope and sweet meat from *kaong*. Sweet meat and vinegar from *kaong* are regular sources of income for the farmers due to the continuous demand for these products (Vicente, 2003; Magsino, 2003; PCARRD, 1988). It yields sugar, starch, fermented materials and fiber that are used in industrial works and cottage industries. The black tough fiber found in its trunk, locally called *yumot* or *cabonegro*, are used in the manufacture of ropes, cleaning brushes and thatching materials (Lachica-Lustica, *et al.*, 1994).



Presentors **Dr. Jesus P. Briones** (left) and **Prof. Beng P. Umali** (right) during the open forum on their presented researches, May 16.

On-going efforts to help the industry started in 2002 when the CvSU RD&E Program for Sugar Palm was instituted. CvSU entered into a memorandum of agreement with the LGU of Brgy. Bancod, Indang, Cavite and Happy Earth, Inc., a non-government organization in 2003.

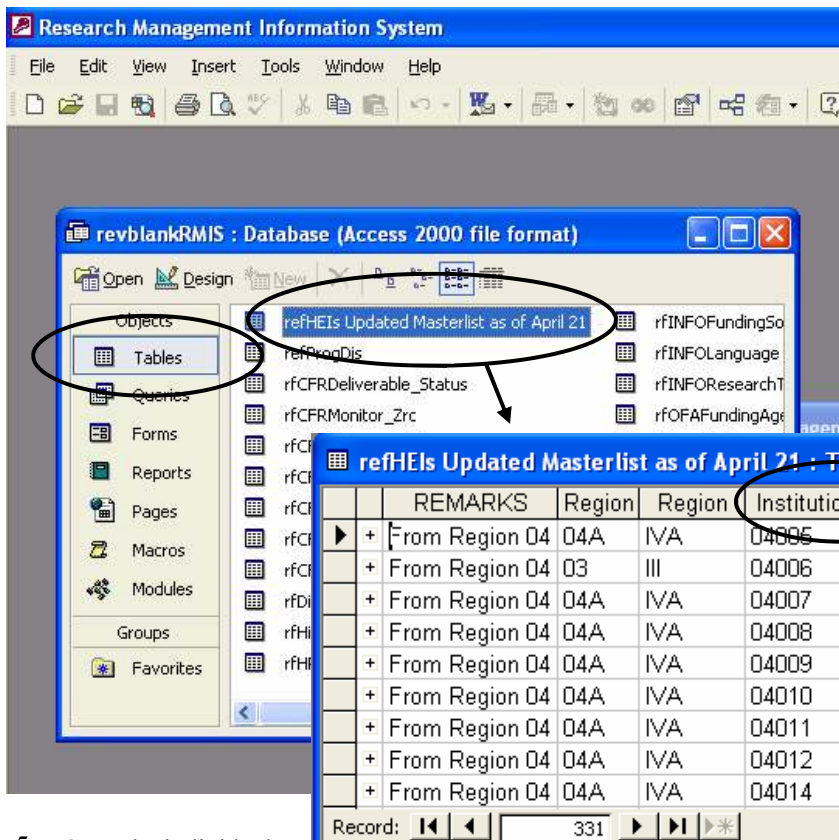
This project was proposed because of the importance of *kaong* and its potential in alleviating poverty in local farmers and in enhancing the ecological condition of upland Cavite.

The project sought to complement the efforts of CvSU, the Local Government Unit of Indang and Happy Earth, Inc. It aims to develop the *kaong* industry in the municipality by producing quality planting materials and by assisting farmers in palm grove maintenance and establishment. More specifically, the project aims to: (1) develop and test techniques in *kaong* propagation and planting; (2) establish a *kaong* nursery at CvSU; (3) disperse quality planting materials to young *kaong* farmers in the community; and (4) establish new *kaong* palm groves and conduct supplemental planting in existing groves.

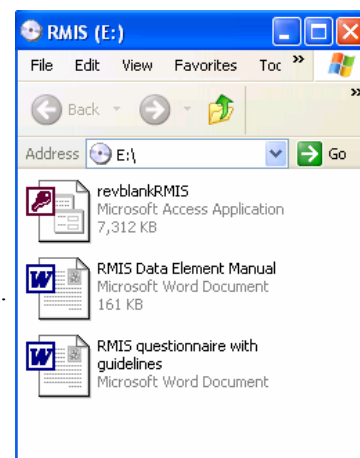
# What to do with the RMIS CD?

*How to comply and make a better impression ☺*

1. From the RMIS CD, copy files to hard disk. These include three files: *revblankRMIS.mdb*, *RMIS questionnaire with guidelines.doc*, and *RMIS Data Element Manual.doc*.
2. Open the MS Access file, *revblankRMIS.mdb*. On the window entitled “*revblankRMIS*” (usually minimized), click on Tables. Look for the table, *refHEIs Updated Masterlist as of April 21*. Once opened, look for Institutional Code (fourth column). Codes start with 04 and 05 for HEIs from Regions IV and V, respectively. Take note of the institution code which will be used for the IDs required for each RMIS form.



3. The MS Word file, *RMIS questionnaire with guidelines.doc*, may be reproduced and distributed to specific respondents, i.e. the researchers and graduate faculty (who are teaching research) to fill out RMIS Form 1 (HEI Researchers) and the library to fill out RMIS Form 4 (HEI Graduate Theses and Dissertations). Each form comes with complete instructions.
4. An institution may leave out an RMIS form unanswered if needed, e.g. if it does not have any research unit to fill out RMIS Form 2 (HEI Research Unit/s).



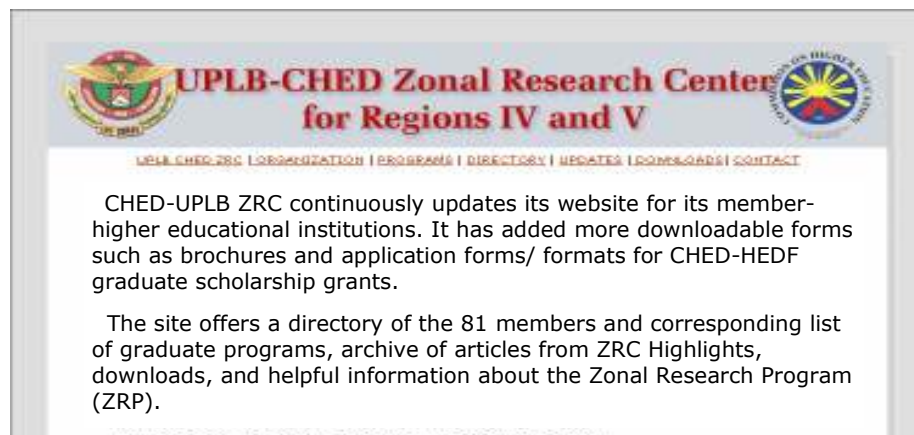
5. Once the individual forms are consolidated, the encoder/ personnel-in-charge may start filling out the database. The MS Word file, *RMIS Data Element Manual.doc*, explains in detail each element in the database for ease and accuracy of encoding.
6. All materials regarding the RMIS, i.e. filled out MS Word RMIS forms in hardcopy and encoded *revblankRMIS.mdb* in softcopy (burned in fresh CD), shall be submitted to the CHED-UPLB ZRC. However, members in extremely far areas such as Region IV-B (MIMAROPA) and Region V are allowed to submit only the softcopy through package delivery or through the Internet if the attachment load allows so. (Note: The blank *revblankRMIS.mdb* is 7.3 MB against the 10 MB maximum allowed attachment for Yahoo! Mail.)

(Luzon Intezonal Research... from page 1)

Among the presenters during the conference were: **Dr. Mary Janet Arnado**, on “*Maternalism in Mistress-Maid Relations: the Philippine Experience*”; **Dr. Angelo Unite**, on “*The Effect of Foreign Entry and Ownership Structure on the Philippine Domestic Banking Market*”; **Dr. Lorelie C. Mendoza**, on “*Population Growth and Customary Land Law: Cordillera Villages*”; **Dr. Elsie C. Jimenez**, on “*Multiple 6-bromotryptophan Residues in a Sleep Inducing Peptide*”; **Dr. Ma. Patricia V. Azanza**, on “*Canned Rice Products as Philippine Military Food Rations*”; **Dr. Caesar Saloma**, on “*Self-organized Queuing and Scale-free Behavior in Real Escape Panic*”; **Dr. Emelina G. Regis**, on “*Comparison of Pollen Abortiveness of Four Weed Species Treated Mercuric Chloride*”; and **Dr. Asuncion K. Raymundo**, on “*Genetic Homogeneity of the Banana-infecting Strains of Ralstonia Solanacearum (Smith) Yabuuchi, et.al. in the Philippines.*”

A presentation of various CHED research and support grants by Dr. Libertad P. Garcia, Research Unit Chief of the CHED-OPPRI culminated the conference.





## Luzon ZRCs to hold 2nd Interzonal Research Con

Due to the overwhelming success of the First Luzon Interzonal Research Conference, a meeting was held with Luzon ZRC Directors last June 20 at De La Salle University-Manila to discuss the possibility of having a Second Luzon Interzonal Research Conference in February 2007.

Compared with the first conference held on March 3, the upcoming conference is expected to feature outputs on the completed researches under the Grants-in-Aid (GIA) as well as other researches done by faculty/researchers from member-HEIs. Moreover, there will also be a forum where member-HEIs could clarify important matters related to higher education. Some of the possible topics initially identified are as follows: *Issues Related to Accreditation, Intellectual Property Rights for faculty researches, Proliferation of Public Universities and Colleges, and Graduate Tracer Study: As a Mean to Answer the Emerging Issues in Philippine Higher Education.*

To finalize other important details for the 2<sup>nd</sup> Luzon Interzonal Research Conference, another meeting is scheduled on July 22 to be hosted by the Mariano Marcos State University in Batac, Ilocos Norte.

## NEWS BITS

CHED-UPLB ZRC has already received two research proposals, from the Republic Colleges (Albay) and the Sacred Heart College (Lucena City), for possible funding under Grants-in-Aid (GIA). Other interested faculty/researchers of member-HEIs may still submit proposals on the following thrusts:

- Education (enhancing teachers' capabilities in instruction and students' learning capacity)
- Environment (protecting the environment, conserving and managing natural resources)
- Socio-economics (addressing social and economic concerns of regions IV and V particularly on health, education, and income)

Proposals must be completed within one year and with a budget not exceeding Php200,000. Collaborative researches among/ between member-HEIs are preferred.

\*\*\*\*\*

The Grants-in-Aid (GIA) project, *"Assessing the Quality of Life of Selected Rural Communities along Riverbanks of Regions IV and V: Basis for Development Intervention"* has been completed and is now subject for final review by the CHED-UPLB ZRC's research evaluators. The HEI proponents of the study are the University of Batangas, Bicol University, and University of Perpetual Help System-Laguna.

\*\*\*\*\*

As of writing, the UPLB Graduate Tracer Study among graduates of AY 2000-2001 to AY 2003-2004 is in the process of statistical analysis. The final report shall be included in the ZRC semi-annual accomplishment report.



Commission on Higher Education - University of the Philippines Los Baños  
**ZONAL RESEARCH CENTER FOR REGIONS IV AND V**  
DA-BAR RDE Network Bldg., UP Los Baños, College, Laguna 4031

CHED-UPLB ZRC for Regions IV and V is one of the nine ZRCs in the country that assists the Commission on Higher Education on its mandate to enhance the research capabilities of higher education institutions (HEIs) in the Philippines. For further information, call (049)536-5326, fax 536-3341, e-mail [chedzrc\\_uplb@yahoo.com](mailto:chedzrc_uplb@yahoo.com) or visit [www.geocities.com/uplb\\_chedzrc](http://www.geocities.com/uplb_chedzrc).

**Editorial Staff:** Dr. Enrico P. Supangco, Dr. Mario V. Perilla, Dr. Serlie B. Jamias (Editorial Consultant), May M. Serrano, Ma. Ellenita G. de Castro; **Contributors:** Florante A. Cruz, Lily O. Borlaza