

AVR070: Modifying AT90ICEPRO to Support Emulation of AT90S8535

For the AT90ICEPRO emulator to be able to emulate AVR® AT90S8535, three straps must be inserted.

People with some solder experience may install these three straps themselves. This document shows how to mount these straps in a safe way.

Contact your local Atmel representative if you prefer to have your emulator updated by Atmel.

Required Parts

- Three insulated wires, approx. 10 cm long, 5 mm of the insulation removed on each end.
Exact length as shown in the pictures:
○ 85 mm, □ 95 mm, ☆ 100 mm, all with 5 mm of the insulation removed on each end.
Recommended wire: solid wire, 0.4 to 0.8 mm diameter (AWG26 to AWG20). Maximum thickness is 1.0 mm (AWG18), the hole diameter on the board. As the wires will not conduct power, there is no minimum thickness. Stranded wire may cause short circuits.

Required Tools

- ESD-safe workstation
- A good soldering iron
- Solder
- Desolder wick
- Pliers
- Cutter
- Pozidriv No.1 screwdriver

Work Description

1. This work must only take place on an ESD-safe workstation. The AT90ICEPRO contains ESD sen-

sitive components that may be damaged if not handled correctly.

2. Remove the top lid of the AT90ICEPRO emulator by removing the two uppermost screws on each side.
3. Locate the area where the straps will be installed. It is in the corner near the pod connector. In Figure 1, the pod connector is at the top.
4. Identify the pads where the straps are to be installed. The ends of the three straps are identified by ○, □ and ☆. See Figure 2, Figure 3, Figure 4 and Figure 5 for details.
5. All the pads are 1.0 mm holes. They may have been filled with solder during production. If necessary, use a desolder wick to remove excessive solder before mounting the straps, or just melt the solder and put the wire end in the hole.
6. Mount all three straps as shown in the pictures. Make sure not to overheat the pads. The tracks on the PCB are thin and they are easily broken.
7. Verify that all three wires have been mounted between the correct pads.
8. Check that all wire ends are soldered correctly and that there are no short circuits between the wire ends and the adjacent pads. If necessary, remove the bottom lid of the emulator and inspect the bottom side of the board.
9. Mount the top and bottom lid on the emulator.



AT90ICEPRO Emulation of AT90S8535

Application Note



Figure 1. Overview

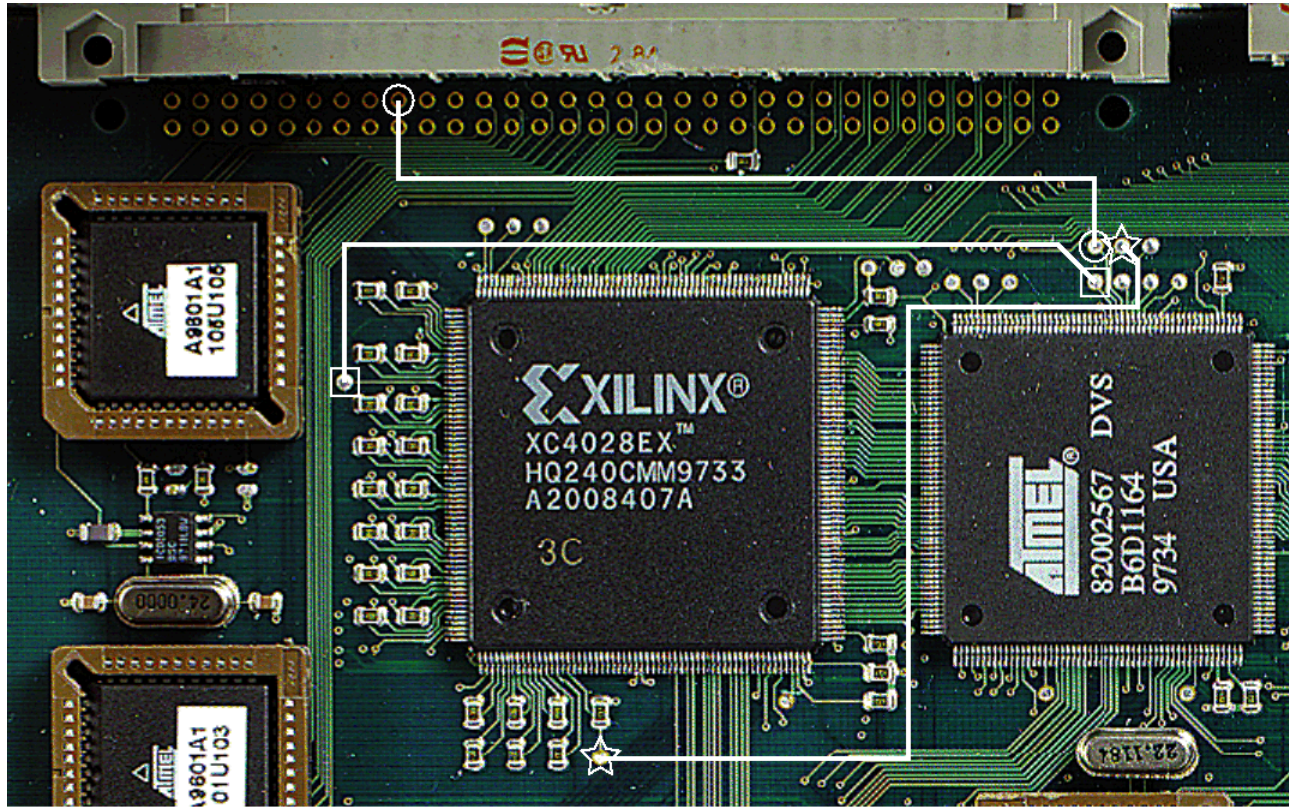


Figure 2. Detail showing right end of all three straps.

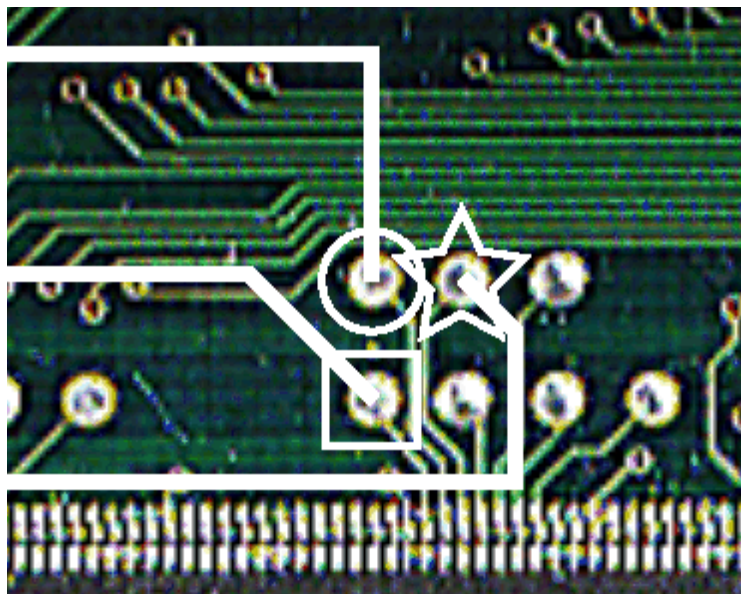


Figure 3. Detail showing left end of ○.

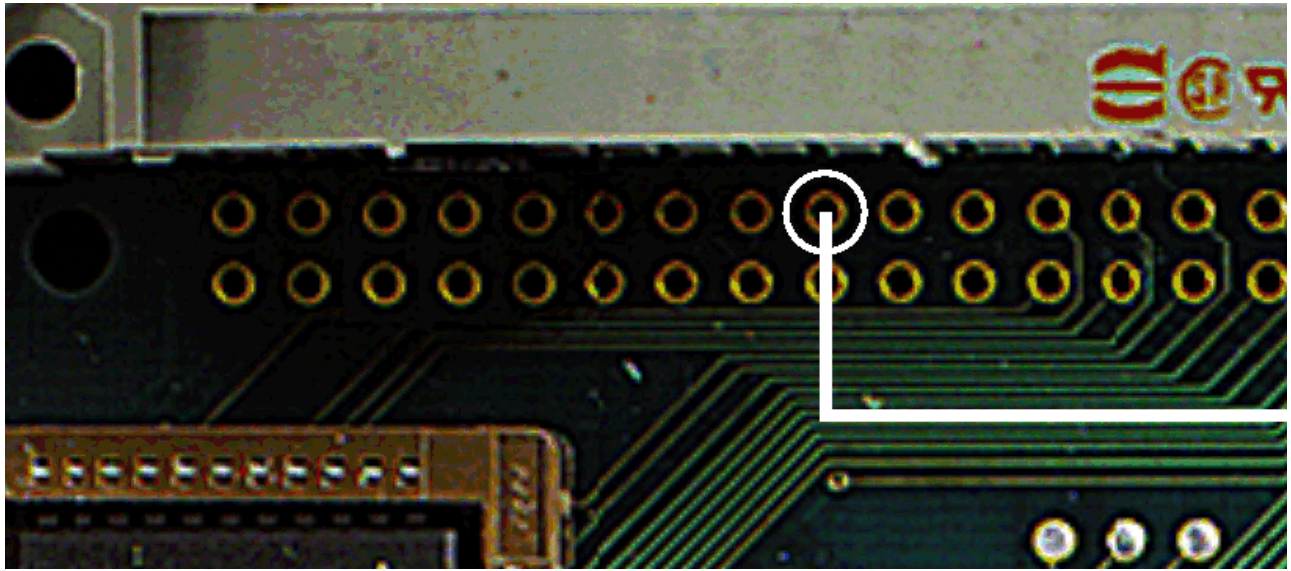


Figure 4. Detail showing left end of □.

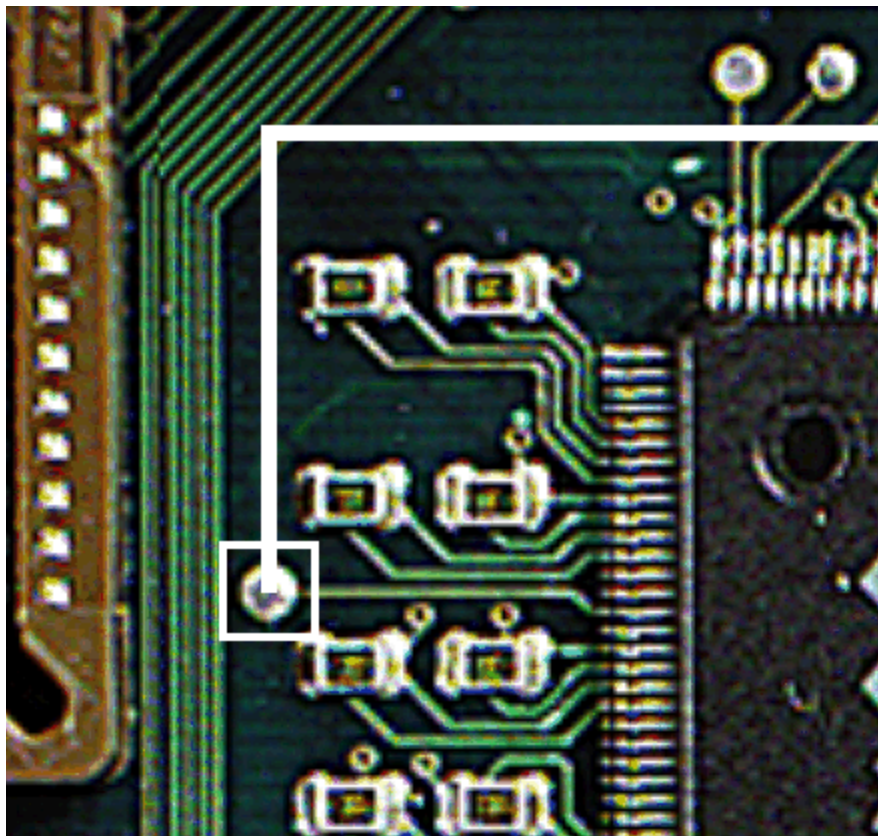
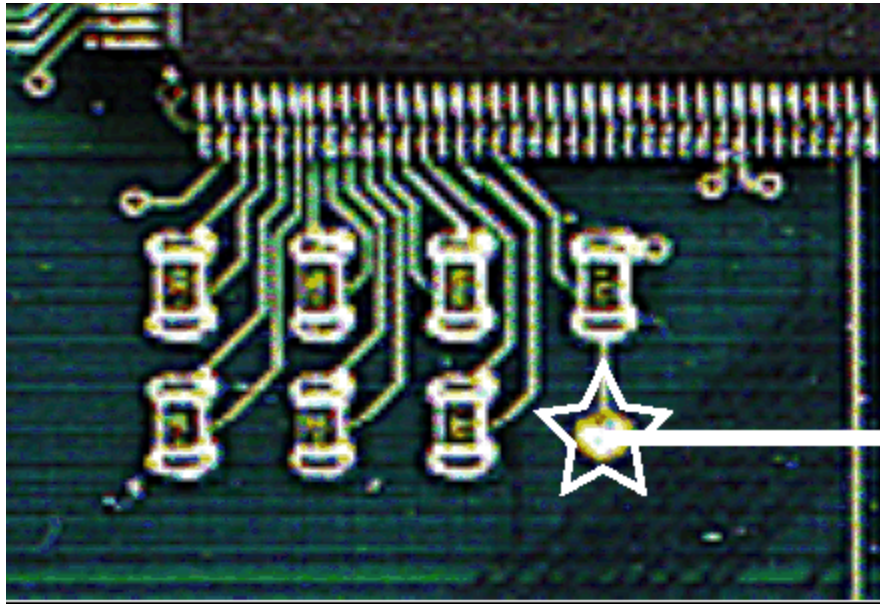


Figure 5. Detail showing left end of ☆.







Atmel Headquarters

Corporate Headquarters

2325 Orchard Parkway
San Jose, CA 95131
TEL (408) 441-0311
FAX (408) 487-2600

Europe

Atmel U.K., Ltd.
Coliseum Business Centre
Riverside Way
Camberley, Surrey GU15 3YL
England
TEL (44) 1276-686677
FAX (44) 1276-686697

Asia

Atmel Asia, Ltd.
Room 1219
Chinachem Golden Plaza
77 Mody Road
Tsimshatsui East
Kowloon, Hong Kong
TEL (852) 27219778
FAX (852) 27221369

Japan

Atmel Japan K.K.
Tonetsu Shinkawa Bldg., 9F
1-24-8 Shinkawa
Chuo-ku, Tokyo 104-0033
Japan
TEL (81) 3-3523-3551
FAX (81) 3-3523-7581

Atmel Operations

Atmel Colorado Springs

1150 E. Cheyenne Mtn. Blvd.
Colorado Springs, CO 80906
TEL (719) 576-3300
FAX (719) 540-1759

Atmel Rousset

Zone Industrielle
13106 Rousset Cedex, France
TEL (33) 4 42 53 60 00
FAX (33) 4 42 53 60 01

Fax-on-Demand

North America:

1-(800) 292-8635

International:

1-(408) 441-0732

e-mail

literature@atmel.com

Web Site

<http://www.atmel.com>

BBS

1-(408) 436-4309

© Atmel Corporation 1998.

Atmel Corporation makes no warranty for the use of its products, other than those expressly contained in the Company's standard warranty which is detailed in Atmel's Terms and Conditions located on the Company's web site. The Company assumes no responsibility for any errors which may appear in this document, reserves the right to change devices or specifications detailed herein at any time without notice, and does not make any commitment to update the information contained herein. No licenses to patents or other intellectual property of Atmel are granted by the Company in connection with the sale of Atmel products, expressly or by implication. Atmel's products are not authorized for use as critical components in life support devices or systems.

Marks bearing ® and/or ™ are registered trademarks and trademarks of Atmel Corporation.

Terms and product names in this document may be trademarks of others.



Printed on recycled paper.

1213A-11/98/xM