



Commercial Quotation June 2007

www.desislava20granulators.com

E-mails: desislava20@fastbg.net ; ktomov@usa.com

DUNS number: 55-257-6134

**2 GRANULATORS KOMPASS STRENGTHEN DESIGN
SUITABLE FOR DRY GRINDING OF RUBBER/TYRE PIECES
WITH SIZES:**

ABOUT 25 mm X 25 mm X 25 mm

UP TO END MATERIAL WITH SIZES 4 mm

WITH PRODUCTIVITY PER HOUR UP TO 2'000 kg AT THE INPUT

ZINC COAT BODIES OF THE GRANULATORS AND CONVEYORS

1 GRANULATORS KOMPASS 500/1200 SOLID ROTOR (CS) CARBON STEEL (First Grinding)

1 GRANULATORS KOMPASS 800/1200 OPEN ROTOR (CS) CARBON STEEL (Fine Grinding)

GRANULATOR KOMPASS 500/1200
SOLID KNIFE HOG STYLE ROTOR
STRENGTHENED CARBON STEEL (CS) DESIGN
ZINC COAT BODY
(First Grinding)

Purpose	Dry Grinding of rubber pieces together with the metal admixtures (initial material) CAPACITY: ABOUT 2'000 kg per hour at the input Max. sizes of the initial material: about 25 mm X 25 mm X 25 mm
Motors	110 kW / 1500 rpm / IP54 / 50 Hz / 3 phases / 400 V 1.5 kW for the hydraulic unit suitable for the opening of the machine 1.5 kW for the hydraulic unit suitable for the opening of the screen cradle
Rotor	Staggered / 12 sections X 3 rows of fly knives on each section Cutting Cylinder of the rotor 500 mm X 1200 mm
Knives	36 pcs. Fly knives X 100 mm 6 pcs. Bed knives X 600 mm (slant) – TWO ROWS of the bed knives The kind of the knives steel is: X153CrMoV12 = D2 = 1.2379
Screens holes	16 mm
Bearings	SKF
Motor control	Will be manufactured with units from " Telemecanique " - France
Note	The granulator will be equipped with cooling system of the rotor and the cutting chamber.

GRANULATORS KOMPASS 800/1600 OPEN ROTOR (CS) CARBON STEEL (Fine grinding)

Purpose	<p>Dry Grinding of the rubber pieces received from the granulator Kompass 500/1200 Solid rotor (First Grinding).</p> <p>Note: All metal admixtures should be separated from the ground material after the granulator Kompass 500/1200 Solid rotor (First Grinding) and after that the clear rubber will feed the granulator Kompass 800/1600 (Fine grinding).</p> <p>CAPACITY: Up to 2'000 kg per hour at the input Max. sizes of the initial material: about 16 mm</p>
Motors	<p>160 kW / 1500 rpm / IP54 / 50 Hz / 3 phases / 400 V</p> <p>1.5 kW for the hydraulic unit suitable for the opening of the machine</p> <p>1.5 kW for the hydraulic unit suitable for the opening of the screen cradle</p>
Rotor	<p>Straight/ 9 rows of fly knives</p> <p>Cutting Cylinder of the rotor 800 mm X 1600 mm</p>
Knives	<p>27 pcs. Fly knives X 533 mm</p> <p>9 pcs. Bed knives X 533 mm (slant) – THREE ROWS of the bed knives</p> <p>The kind of the knives steel is: X153CrMoV12 = D2 = 1.2379</p>
Screens holes	4 mm
Bearings	SKF
Motor control	Will be manufactured with units from " Telemecanique "- France
Note	The granulator will be equipped with cooling system of the rotor and the cutting chamber.

**Note: the motors 110 KW and 160 KW will be delivered from Germany or Italy
The motors 1.5 kW and the other small motors are made in Bulgaria**

Belt Conveyor 1000 / 7000 (Feeding belt)

a) Sizes:

- effective width – 1000 mm
- Height of the axis of the charge shaft – 1000 mm
- Height of the axis of the discharge shaft – 3100 mm
- distance between the shafts – 7000 mm

b) Leading:

- side of assembly – left in the direction of the belt motion
- Ø pushing drum – 320 mm
- Ø pulling drum – 320 mm
- el. motor – 2,2 kW/400 V/50 Hz/1500 rpm /4 pol.

c) Rubber belt:

- with increased performance for hardness of cutting and strokes
- thickness – 8 mm
- vulcanizing way of connection
- cleats – height 20 mm, width 2 x 350 mm, distance 500 mm

d) Legs:

- regulation +/- 150 mm
- 4 pieces. / 2 pieces with interlock/, Ø wheels 150 mm
- paint:
 - body blue - Blu Ral 5002
 - guard - yellow Ral 1003

**Possibility for assembly of metal detector
Possibility for assembly of metal separator for Fe.**

Belt Conveyor 600/3000 (Placed under the granulator 500/1200)

a) Sizes:

- effective width – 600 mm
- height of the axis of the charge shaft – 200 mm
- height of the axis of the discharge shaft – 200 mm
- distance between the shafts – 3000 mm

b) Leading

- side of assembly – right by the direction of the belt motion.
- Ø pushing drum – 320 mm
- Ø pulling drum – 320 mm
- motor – 1,5 kW/400 V/50 Hz/1500 rpm /4 pol.
- reducer – 86

c) Rubber belt:

- with increased performance for hardness of cutting and strokes
- thickness – 8 mm
- vulcanizing way of connection
- cleats – height 20 mm, width 450 mm, distance 500 mm

d) Legs – static

Possibility for assembly of metal detector
Possibility for assembly of metal separator for Fe.

DISCHARGE PNEUMATIC SYSTEM (DPS) CARBON STEEL (CS)

Purpose	The DISCHARGE PNEUMATIC SYSTEM - "DPS" contain: fan - working pipes - cyclone - cyclone stand - dust collection system and the stand for this system. Textile (WOOL) separation plant.
Motors (power)	22.5 kW / 1500 rpm / 50 Hz / 400 V
Warranty	12 months from the date of delivery. The warranty doesn't include the servicing. If it is needed to be sent spare parts the warranty terms cover the cost of the spare parts only Ex Works (the cost of the transport of the spare parts is not included in the warranty terms).

WARRANTY FOR THE GRANULATORS:

12 months from the date of delivery (the warranty doesn't include the cutting instruments, screen and the servicing).

If it is needed to be sent spare parts the warranty terms cover the cost of the spare parts only Ex Works. The cost of the transport of the spare parts is not included in the warranty terms.

CHILLERS

WATER COOLED CHILLER W#W 53 C

Max. cooling capacity	55 kW (+5 °C evp +35 °C cond)
Max. operation power	16 kW

Overall dimensions:

width	600 mm
length	950 mm
height	1400 mm
weight	250 kg
connection tube sizes	4 X Ø 35 copper tubes for weldings
working temperature range of the chiller	- 5 °C up to + 20°C , if the evaporation temperature is under 0°C , it is obligatory the using of Ethylene Glycol

The chiller is equipped with water pump for the working water with free pressure 9 m H₂O (90 kPa)

The pressure losses of the outside water are 4 m H₂O (40 kPa)

The chiller will be equipped with 120 Liters water tank for the cooled water.

The chiller will be equipped with 2 SCROOL COPELAND compressors and if here have a need the cooling power can be reduced.

The chiller will be equipped with plate heat exchangers.

The chiller will be equipped with copper-aluminum outside condenser unit with two fans.

Overall dimensions of the copper-aluminum outside condenser:

width	300 mm
length	1450 mm
height	1100 mm

The chiller will be equipped with adjustable expanding valve, if have a need the evaporation temperature can be adjusted.

The el. equipment is from MOELER Germany

The chiller's control will be with complete microprocessor equipment with digital display.

Together with the equipment, we will send and detailed instruction for assembling and servicing – including text information and diagrams.

If have a need to be sent people for technical assistance at the plant of the customer, it will be object of an additional agreement.

Manufacturing time: 45 working days

Transit time: 20 days

Validity of the offer: up to the end of the year 2007 (**For the Chillers**)

Warranty	12 months from the date of delivery. If it is needed to be sent spare parts the warranty terms cover the cost of the spare parts only Ex Works. The warranty doesn't include the servicing (the cost of the transport of the spare parts is not included in the warranty terms).
-----------------	---

PRICES

Granulators	500/1200 Solid Rotor (first grinding)		
	800/1600 Open rotor (fine grinding)		
Chillers			
Metal separator (3 pcs.)	(Ex Works the UK)		
Belt Conveyors (BC)	1000 X 7000 (B)		
	600 X 3000 (S)		
- Granulators - Chillers			
(B) 2 pcs. (S) 2 pcs.			
DPS & Wool / Textile Separation Plant			
TOTAL			

PAYMENTS

First Payment (Deposit)	40%-By Free Bank Remittance (With the order - For the whole deal)
Second Payment (Final payment)	60%-By Free Bank Remittance (After each shipment, but not more than 10 working days)

If you require any further information, please contact us and we will be pleased to supply it.

We look forward to hearing from you.

Sincerely Yours,
Konstantin Tomov,
President of Desislava 20 Granulators Company

ADDRESS:

9 Zlatovrah Str.
1164 Sofia, Bulgaria
tel./fax: 359 2 870 3295
mobile: 359 896 872 859

www.desislava20granulators.com

desislava20@fastbg.net

ktomov@usa.com

Desislava 20 Granulators Company wishes you successful business!

GRANULATORS



GRANULATORS



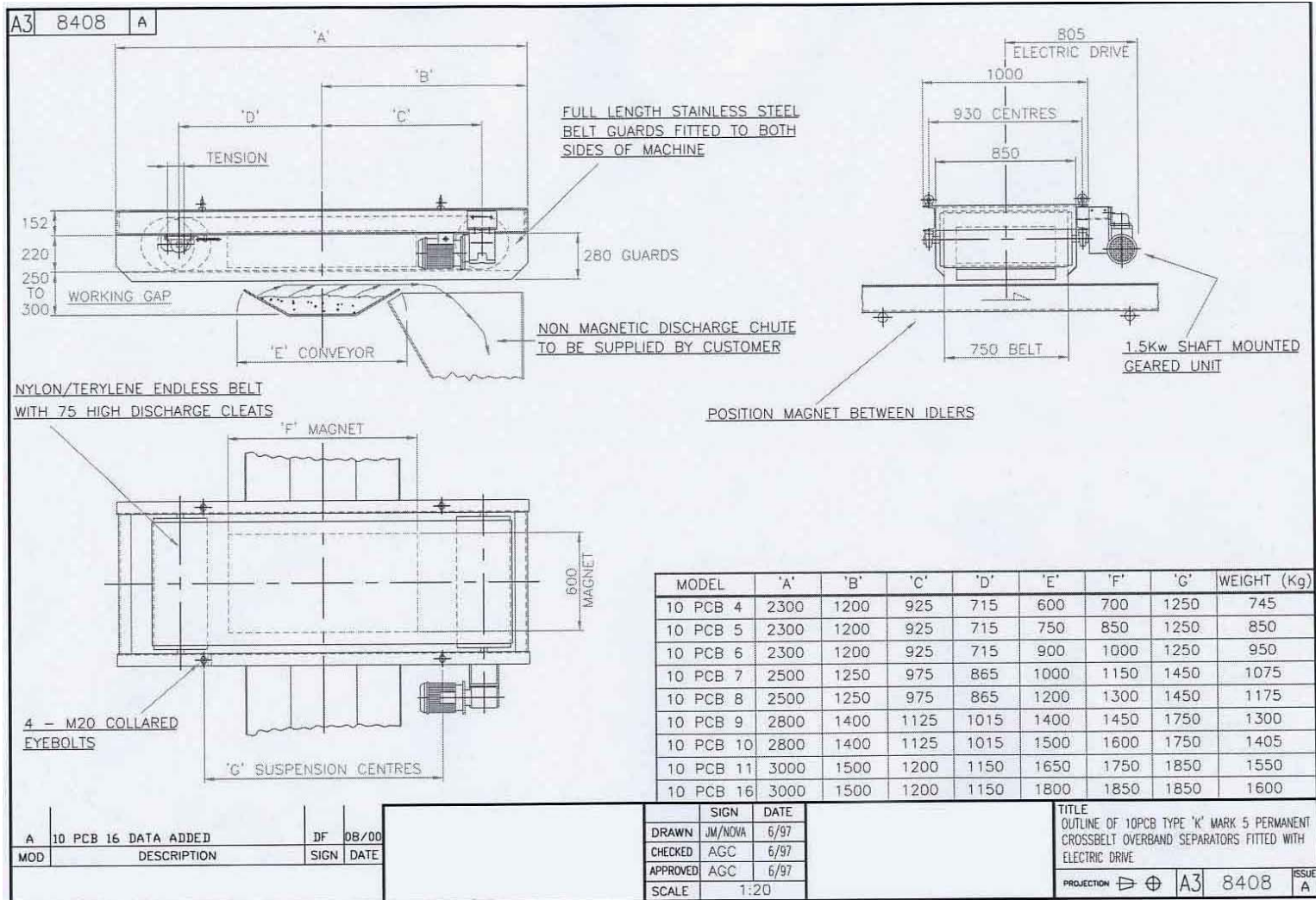
CHILLERS



MASTER MAGNETS

CROSSBELT PERMANENT MAGNETIC OVERBAND SEPARATOR,
complete with electric drive operating across clients 1000/1050mm wide belt.

SPECIFICATION	PS1221
OUTLINE DRAWING	A3/8408
APPLICATION	Recommended normal operating gap between belt and magnet 250mm (max.operating gap 300mm) Magnetic intensity at 250mm: In excess of 450 gauss.
OPTIONAL EXTRAS	Refer to specification
COMPLETION	4 - 5 Working weeks.
PAYMENT TERMS	To be agreed
TERMS	Master Magnets standard terms and conditions of sale
CARRIAGE	Extra at cost



**PRODUCT SPECIFICATION PERMANENT CROSS
BELT OVERBAND SEPARATORS.**

To be read in conjunction with Permanent Overband Separator Leaflet – AB/03-01
DRAWING No A3.8408 - ELECTRIC DRIVE.

MAGNET SYSTEM :	COMPUTER DESIGNED, STRONTIUM FERRITE CERAMIC SYSTEM MOUNTED ONTO HEAVY DUTY BACKBAR, HOUSED IN HARD WEARING NON MAGNETIC STEEL CASE. THE MAGNETIC INTENSITY IN EXCESS OF 450 GAUSS AT 250mm WORKING GAP IS RETAINED INDEFINITELY.
MAGNET CIRCUIT : SUPPORT FRAME:	LOW CARBON STEEL WELDED CONSTRUCTION FROM HOT ROLLED STEEL SECTION TO B.S. 4 : PART 1 : 1980. PROVIDED WITH EYE BOLTS FOR SUSPENSION AND WHERE POSSIBLE THE LENGTH OF FRAME IS KEPT WITHIN E.C. ROAD REGULATIONS WHICH ALLOWS THE SEPARATOR TO BE LEFT IN PLACE DURING TRANSPORTATION ON MOBILE PLANT.
PULLEYS:	WELDED STEEL CONSTRUCTION, CROWNED FACE, TWO PULLEY SYSTEM, WITH SHAFTS WELDED INTO BOSSES. TAIL PULLEY IS FITTED WITH BEARING SLIPPER PLATES FOR EASE OF BELT TENSIONING AND TRACKING.
BEARINGS: DRIVE:	SELF LUBE SEALED FOR LIFE PILLOW BLOCK TYPE, FITTED WITH SAFETY CAPS AS STANDARD. HYDRAULIC OR ELECTRIC DRIVES CAN BE SUPPLIED FOR THIS RANGE OF SEPARATORS DEPENDING UPON THE MOBILE PLANT TO WHICH IT IS FITTED.
ELECTRIC DRIVE:	SHAFT MOUNTED WORM GEARED MOTOR UNIT FITTED WITH IP 54 ELECTRIC MOTOR, CONNECTED TO DRIVE PULLEY WITH A HEAVY DUTY FLEXIBLE COUPLING. DRAWING No A3.8408.
SEPARATOR BELT:	NYLON/TERYLENE CARCASE CONSTRUCTION WITH 3 AND 1.5 mm (MINIMUM) COVERS FITTED WITH VULCANISED T 75 RUBBER SLATS AT 1000mm NOMINAL SPACING. BELTS ARE VULCANISED ENDLESS.
SIDE GUARDS:	MANUFACTURED FROM T.304 STAINLESS STEEL AND FITTED AS STANDARD TO BOTH SIDES OF OVERBAND. DESIGNED TO PREVENT BELT DAMAGE DUE TO ENTRAPMENT OF STEEL BETWEEN MAGNET AND BELT AND ALSO TO PREVENT ACCESS TO PULLEY NIPPING POINTS DURING NORMAL RUNNING. IT IS THE CLIENTS RESPONSIBILITY TO ENSURE THAT THE GUARDS ARE IN POSITION AT ALL TIMES AND THAT ACCESS TO THE MACHINE IS RESTRICTED.
FINISH:	ALL STEEL WILL HAVE ONE COAT OF HIGH PERFORMANCE MODIFIED ALKYD AIR DRYING GREY PRIMER AND TWO COATS OF RAL 5019 HIGH PERFORMANCE ALKYD AIR DRYING ENAMEL.
INSTRUCTION MANUAL :	COMPREHENSIVE INSTALLATION, OPERATION AND MAINTENANC MANUAL SUPPLIED WITH EACH MACHINE.
OPTIONS : STARTER-TYPE OBMS :	A SELF CONTAINED MOTOR STARTER FOR ELECTRIC MOTOR DRIVEN MACHINES. ENCLOSED TO IP55, COMPLETE WITH START/STOP PUSH BUTTONS, LOCKABLE OFF ISOLATOR AND THERMAL OVERLOADS. SEE DRAWING A4.4112 FOR DETAILS.
SLING CHAINS :	FOR SUSPENDING OVERBAND IN WORKING POSITION.
PAINT FINISH :	SPECIAL COLOURS CAN BE PROVIDED.