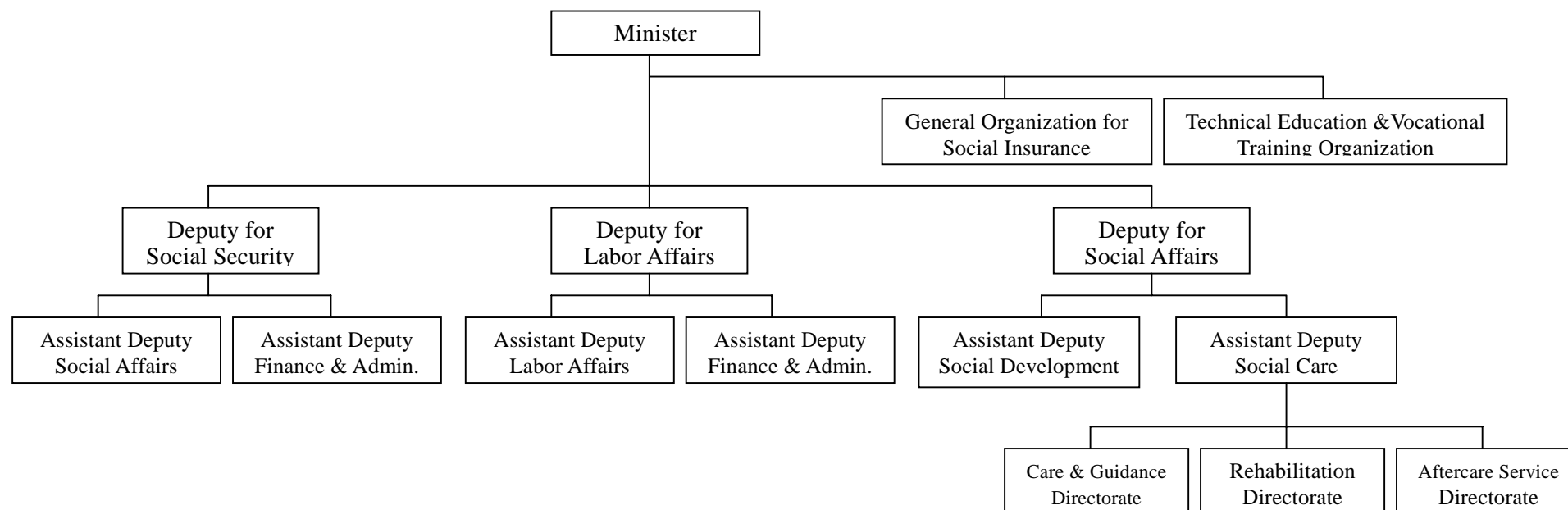


Annex 1. Disability-related Organizations

1-1. Organizational Chart of Ministry of Labor and Social Affairs¹



¹ Main departments and Disability-related sections only.

1-2. List of Disability-related Major Public Organization/Facilities

No	Name	Year Established	Description
Medical Institutions			
1	Riyadh Medical Rehabilitation Centre	1974	Serves as a main supplier of prostheses and orthoses to patients. Also provides a three year education program for technical assistants
2	Abha Medical Rehabilitation Centre		Equipped with a small prosthetic unit with 2 technicians. Located within the Abha General Hospital Compound.
3	King Fahad Hospital of Gizan	1984	Operating prosthetic orthotic unit with qualified staff, modern facilities and equipment. Centre components, however, need to be modernized.
4	Makkah Medical Rehabilitation Centre	1978	Fully equipped with modern facilities, and staffed by 18-20 expatriate technicians.
5	King Fahad Hospital of Madinah		One of the main hospitals which serves visiting pilgrims, and has a prosthetic/orthotic unit. Well equipped, and supervised by 4 qualified technicians with some limited rehabilitation services due to reduced technical capacities.
6	King Faisal Specialist Hospital and Research Centre		Active in prosthetic/orthotic services with qualified staff
7	Armed Forces Hospital of Riyadh		Fully equipped compound with large prosthetic/orthotic unit and 2 qualified and trained prosthetists / orthotists, and 6 technicians.
8	Armed Forces Hospital of Al-Hada-Taif		Well-equipped prosthetic/orthotic workshop, qualified personnel, with well established physical therapy and rehabilitative services. Produces all types of assistive devices with the exception of upper limb prostheses.
9	King Khalid University Hospital of Riyadh		Small orthotic units with workshop, with highly qualified consultancy and referral services in all aspects of assistive devices, and rehabilitative programs, certified technicians, and qualified staff on hand.
10	The National Guard-King Fahd Hospital of Riyadh		Fully equipped prosthetic/orthotic workshop with qualified staff. Rehabilitative programs with physiotherapy are in the process of expansion.

No	Name	Year Established	Description
Educational Institutions			
1	Noor Institute for Blinds	Early 1960s	10 centres serving 625 blind children with a staff of 264 qualified teachers, with diplomas in special education. The Institute, and its branches have been equipped with a special curriculum, modules, and specialized assistive devices, with competent staff.
2	Amal Institute for Deaf	1964	23 branches with additional units in certain public schools. Approximately 3,000 deaf students, both sexes, are served by a qualified staff of 606 teachers. At the middle and secondary levels, students are taught certain kinds of technical and career-oriented vocational education suitable to their degree of ability, and levels of deafness.
3	Institute for Mentally Retarded	1971	By 1992 the number of institutions grew to 14 in addition to 233 units annexed to elementary schools where 2,250 children with intellectual disability are being served with a total of 476 qualified and certified teachers.
Institutions for Social Welfare			
1	The "Career Rehabilitation Centres" of Riyadh, Al-Taif and Dammam		The total capacity of these centers is around 650 disabled, with an age range of 15-30 years. Approximately 744 persons, 25 % women, are enrolled in the programs. Tailoring and embroidery are reported to be the most popular followed by typing and computer.
2	Social Rehabilitation Centres		These centers provide room and board, as well as physiotherapy and medical care for those who are severely disabled, and cannot work. The Centres of Riyadh, Al-Ahsa, and Medinah have a capacity for 820 PWDs (male 38.7 % and female 61.3 %) respectively.
3	Comprehensive Rehabilitation Centres		These centers serve the severely disabled, as well as those who are trainable for variety of gainful employment. The capacity of these centers, located in 5 regions, is around 1,350 PWDs.
4	Institute for the Paraplegic Children		2 institutions, located in Riyadh and Taif, provide comprehensive living facilities, and medical care for the paraplegic children. Total enrollment, based on 1993 statistics, was around 770.
5	Social Welfare for Elderly		Located in 7 major cities. Takes care of destitute elderly. Total of 3,888 elderly are under care. In these centers, room and board, as well as medical care and social welfare are provided.

No	Name	Year Established	Description
Other Institutions			
1	The Day Care Centres for the Special Groups	Early 1990s	Centers established on a trial basis to provide specialized rehabilitative services for the severely disabled, from birth to 12 years of age, during the day where family and center staff share responsibilities. The centers provide both public awareness and understandings for parents, as well as all kinds of rehabilitative programs for children, including physiotherapy, psychotherapy and occupational therapy etc.
2	The Saudi Welfare Society for Disabled Children	1986	Comprehensive services for the disabled age 0 to 12. Promoting research and public awareness among parents and citizens. Dealing with the psycho-social problems as well as all kinds of appropriate rehabilitative and referral services.

1-3. List of Major Disability-related Private Organization/Facilities

No	Name	Year Established	Contact	Description
1	Prince Salaman Centres for Disability, Research (H.R.H. Prince Salaman Bin Abdulaziz, Founder and Honorary Chairman)	1996	P.O.Box: 94683 Riyadh 11614 Tel: 4822664/4884122 Fax: 4826164	The center has been established for scientific research and related applications in the areas of disability. Works in the domain of all types of childhood disabilities and their causes, including physical, hearing, visual, speech and intellectual disabilities as well as mental disabilities. Covers medical, educational, psychological, technical and engineering studies which aim to eliminate the spread of disability among infants and children, to manage disability at early stages, rehabilitation and ensuring their integration to society.
2	Disabled Children Association (H.R.H. Prince Sultan Bin Salaman Bin Abdulaziz – Chairman of the Board of Director)		P.O.Box 8557 Riyadh 11492 Saudi Arabia Tel: 4543913/4543917 Fax: 4530903	Institution for care and rehabilitation. Known as a comprehensive project which covers all disability issues. Strategy consists of providing specialized care, deploying preventive awareness programs and building a scientific base for rehabilitation and treatment.
3	The Joint Center for Research in Prosthetics and Orthotics and Rehabilitation Programs (JCRPO/RP) (Patronized by H.R.H. Prince Sultan Bin Abdulaziz)	1987	P.O.Box: 27240 Riyadh 11417 Tel/Fax: +966 (1) 493-2897	The only research, training and service facility in the Kingdom. Joint venture between the Ministry of Health and King Saud University, with state-of-the-art technology, equipment, and services. It has research facilities, and orthopaedic assessment equipment, biomechanics, and gait laboratories.
4	Prince Sultan Bin Abdulaziz Foundation			Held a symposium from February 20-23, 2000 on comprehensive care for the elderly. Involved in activating social work for various segments of society particularly the elderly. The symposium also specifies the social psychological and health requirements of the elderly with special reference to the problems they are exposed to such as raising the motivations of the elderly through education and training vocationally that would enhance psychological

No	Name	Year Established	Contact	Description
				balance.
5	Abdul Lateef Jameel Centres for Rehabilitation and Health Care, Jeddah			A 162-bed hospital equipped with medical care and rehabilitation services of highest international standards devoted to the treatment of disability services including treatment of injuries resulting from traffic accidents and complications of chronic disease, rehabilitative programs on brain & spinal cord injuries, and treatment of injuries in joints, bones and muscles.
6	Help Centre (Al Aoun Centre) Jeddah (Ms. Maha Juffali – Directress)			Institution providing challenged children with educational and psychological support. The center is supported by the Ministry of Health with the objective to disseminate a positive attitude towards disabled people. Today, the help center has about 320 children and over 120 staff. It has a new well-serviced building and the center serves Makkah and Madina region.
7	Charitable Society for Care and Rehabilitation if the Handicapped Eastern Province (Prince Moh'd Bin Fahd – Eastern Province Governor and President)			Provides social welfare for PWDs. This project completed with the support and donations of prominent philanthropists including Prince Sultan, Prince Moh'd Bin Fah'd and Prince Saud Bin Naif.
8	Women's Committee of Al Ekha Organization (Coordinating Committee for Disability Care in Makkah Region)			N/A
9	Al Faysaliah Women's Welfare Society, Jeddah			N/A
10	Women's Welfare Society			N/A
11	Al Birr Charity Organization			N/A
12	Al Nafisa Charity Organization			N/A

No	Name	Year Established	Contact	Description
13	Al Noor Institution			N/A
14	Maharat Centre			N/A
15	JISH Centre for Speech and Hearing			N/A
16	Tender Loving Care Centre			N/A
17	Jeddah Centre for Autism			N/A
18	Al Tarbiah Al Fikriah Institution			N/A